

the Clarion



Your official Parish Magazine with news, views, ideas
and real-life stories from Bolter End, Cadmore End,
Lane End, Moor End and Wheeler End

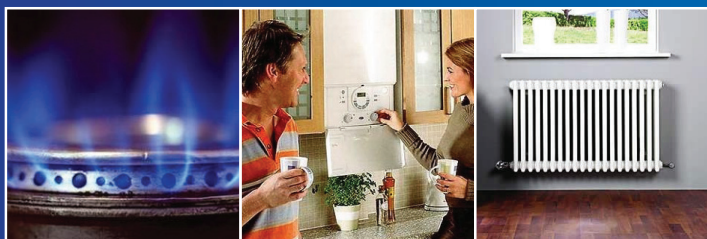


Linking Lane End

The footpath that could
unify our village

APT HEATING SERVICES

*Thinking of having a new
Natural Gas Boiler or full
system installation in 2012?*



ideal



209175

Local Sevicees Offered:

- Full gas central heating installations.
- Natural Gas Boilers.
- Warm Air Units upgraded or removed.
- Radiators added and systems updated or removed.
- Boilers replaced and your options explained in laymans terms.
- Fast, friendly service.
- Full references from satisfied customers available on request.
- Best prices, service and reliability from a mature, local tradesman.

Please call us on:

07941 286747

for a free quotation.

From the Editor

I'm so over it now—winter. The cold, the snow, the damp grey days. I find myself daydreaming of picnics in fragrant long grass, a warm sun dappling through leafy trees. Instead, even though the snow has all but melted and I should by rights be resuming normal sartorial standards, I'm still surgically attached to my puffa jacket and snow boots. I've not seen enough evidence of spring yet to put a spring in my step.

Fortunately, there's enough going on in the village to keep me distracted. I've revamped the 'What's On' pages to hopefully make the events and meetings more easy to navigate (p28). I've also tried to do the same with the bus times—the timetables are always so confusing—I've tried to make things more simple and clear (p52).

If you've not signed the petition to open up a new footpath between the High Street and Edmonds Parade, go find one in your local shop and sign up! Lane End is one village, it's ridiculous that the two sides of the village should be so divided (details on p16).

Finally, look out for the Parish Council's Diamond Jubilee plans—let's all get involved.

Thanks to Rachel Wallace for the cover photo. (racheljwallace.com)

Katy (Editor) katydunn@btinternet.com 01494 883883
Aldersyde, Finings Road, Lane End, Bucks HP14 3EY

Place an ad!

- Advertise in the Clarion and you reach 1700 potential customers in Lane End, Cadmore End, Wheeler End, Bolter End and Moor End.
- You'll also be supporting your Parish Council in the work it does towards maintaining the parish
- To advertise in the Clarion email Katy Dunn on:
katydunn@btinternet.com or call 01494 883883



High Street, Lane End
HP14 3JG
01494 88 22 99
www.grouseandale.com

If you're looking for

- ~ a warm welcome
- ~ delicious food
- ~ quality Cask Marque ales
- ~ an extensive wine list
- ~ log fires and oak beams
- ~ private party rooms, then here are two award winning pubs on your doorstep.

Best Gastro Pub
2010

(S.E. Region)



Turville, Henley
RG9 6QU
01491 63 82 83
www.thebullandbutcher.com

Located in the beautiful "Vicar of Dibley" village, Turville, just below the "Chitty Chitty Bang Bang" windmill



AA Britain's Best Pub
Guide 2012

Your Parish Council



laneendparishcouncil.org.uk

Parish Clerk ♦ **Hayley Glasgow**

Tel: 01494 437111

clerk@laneendparishcouncil.org.uk

74 New Road
Sands

High Wycombe
Bucks HP12 4LG

Councillors

Chairman: Cllr Graeme Coulter.

Vice Chairman:

Cllr Michael Detsiny

Cllr Mandy Dunning

Cllr Ian Harris

Cllr Douglas Pullen

Cllr Jane Osborn

Cllr Allan Simmons

Cllr Lorraine Smith

Cllr Keith Wright

Cllr Callum Stewart

Ditchfield Common

The Parish Council would like to say a huge thank you to all those who contributed towards the Ditchfield Common donation fund.

The Parish Council was astonished by the amount of community support and raised £28,417 from residents and local businesses in Lane End. I am delighted to tell you that the Parish Council has exchanged contracts and we are now the proud owners of Ditchfield Common.

We couldn't have achieved buying Ditchfield Common without the incredible support of the local community so Thank You!

Do you fancy becoming a Parish Councillor?

The Parish Council currently has one vacancy for a Parish Councillor. We advertise vacancies on the Parish noticeboards and website laneendparishcouncil.org.uk. Interviews will be held shortly for this position but if you are interested in becoming a Parish Councillor please keep checking the noticeboards and website.

The role of a Parish Councillor is an unpaid position which involves working for the local community as one of a team of 11 Councillors. The Parish Council meets on the evening of the first Monday of each month except bank holidays or unless otherwise stated. Any resident over the age of 18 who is able to make a regular commitment is eligible to join the council.

How to report a faulty street light

If you see a street light which is faulty please report this to the Parish Clerk. Street lights are either owned by Bucks County Council or the Parish Council. If there is a number on the street light Column please take note of this as it will help to get the street light repaired quicker. Not all street lights are numbered, if they are outside a property please advise the Clerk of the house number etc, the more information the better, thank you.

Lane End Playing Fields

Lane End Parish Council has authorised works to enhance the playing fields and to ensure a safer and more welcoming environment for the users of this hidden gem. The boundary fencing is to be replaced or repaired where required and the tree line surrounding the area is to be “crown raised” to give a more open feel and to reduce the opportunity of anti social behaviour occurring.

Crown raising consists of removing the lower limbs and foliage of the standing trees, in this case, to a height of six feet. The removed foliage will be chipped on site, to avoid unnecessary vehicle movement and used as a mulch underneath the raised trees to control future weed growth.

The entrance to the Playing fields will also have tree work carried out to open up and lighten the entrance to this facility. Going forward, the

Parish Council has opted to take control of the maintenance and future development of facilities in conjunction with Lane End Sports Association, to encourage the full use of this sporting and recreational facility for our local community.

The area is a firm favourite for dog walkers and, dog bins are positioned for the disposal of the plastic bags we hope you all carry to pick after your dog.

Please make sure to pick up after your dog to ensure a hazard-free playing environment.

Diamond Jubilee Celebrations

Monday 4 June 2012

To celebrate this fantastic occasion Lane End Parish Council is considering a “Community Day” located on the Playing Fields. This is an opportunity for local community groups to run a stall similar to those of the village fete, free of charge. We want community groups to be able to publicise and raise funds for their organisations with 100% of their profits from the day being retained to be put to good use for their groups.

We are also exploring the opportunity for Lane End to be a Beacon Village for the occasion, where in conjunction with many hundreds of similar events a beacon fire will be lit simultaneously across the country. Visit diamondjubileebeacons.co.uk for more information.

Very shortly many of the local community groups will receive a letter requesting your commitment to this event. If however you do not receive the letter and want more information, or to register your interest, please contact Hayley Glasgow, Parish Clerk on 01494 437111 or clerk@laneendparishcouncil.org.uk

Parish council meetings

Monday 5 March Sycamore Room,
Lane End Village Hall

Monday 2 April Sycamore Room,
Lane End Village Hall

Tues 1 May **Annual Parish Meeting**
CADMORE END Village Hall

Tuesday 8 May **Annual Meeting of the Parish** and normal meeting
CADMORE END Village Hall

The Parish Council is your first point of call for any issues that concern you to do with Lane End, Cadmore End, Wheeler End, Bolter End and Moor End.

We are here to help.

Contact the Parish Clerk, Hayley Glasgow on:

01494 437111 or
clerk@laneendparishcouncil.org.uk

Local Produce Market



**Like to grow veg?
Did you have surplus last year?
Hate waste?**

We have a solution!

Bring any surplus vegetables, fruit or plants along to Lane End village hall to sell in return for a small donation to village hall funds. Help our community eat great local food!

May – October
9am-1pm
1st and 3rd Saturdays
of the month

(This offer coincides with the two cafes held by the Twinning Association and Holy Trinity church each month)

For more information contact
Margaret Scott: 881298

The lowdown



Lane End Players

Report by Eve Berry

Our next production is 'The Foreigner' by Larry Shue, a comedy set in the 1980s in the Red Neck countryside of Georgia, U.S.A.

An Englishman, Charlie, has been taken to a hunting lodge by his friend to escape his boring life at home in England. However, as he's very shy, they decide to say that he's a foreigner who speaks no English. Of course he can understand everything that's being said - and plotted - by the various members of the community who come to the lodge! Much fun is had as he becomes friends with some - and not such good friends with others!

This play has been produced off Broadway and in many U.S. towns and cities. It played on the West End stage too, with Nicholas Lyndhurst (Rodney from 'Only Fools And Horses') in the lead role.

Our production is part of The Wycombe Arts Festival, so come and see it on Friday 27th April (tickets £7 and £5), Saturday 28th April, Friday 4th May and Saturday 5th May (tickets £10 and £7).

All performances start at 8pm. The box Office opens on Saturday 24th March at the Village Hall. Email us:

boxoffice@laneendplayers.com

See you there!!

Lane End Conservation Group

Report by Jane Osborn

We are very pleased to say that so far this winter, none of the Group's Saturday Action Days have been cancelled due to the weather (famous last words!) Even in the depths of winter there are still practical tasks to be undertaken, along with the ever present need for litter-picking. Find out what we do at:-

laneendconservationgroup.co.uk

Join us for a couple of hours each month and help Lane End look its best. No particular skills are needed as guidance can be given, merely enthusiasm and a little energy.

We meet in the car park by the doctors' surgery at 10 am on the first Saturday of each month, and finish any task in time to go for a coffee in the village hall to chat and warm up!

Don't forget that if you're not able to join in the practical activities, you can still support the work of Lane End Conservation Group by becoming a Supporter. It's just £5 per year. Contact Margaret Adnitt on: margaret.adnitt@gmail.com

Lane End Evening WI

Report by Christine Jennings

Six weddings of former Students is the title for our talk in April, followed in May by the Resolution meeting.

In June we will be having a very topical talk about 'Olympic Games, Past and Present.'

Visitors are always very welcome to join us on the last Monday of the month. Meetings are held in the Sycamore Room at the Village Hall. Meetings start at 8pm.

Royal British Legion

Report by Peter Jennings

The Royal British Legion is holding one of its famous quizzes on Sat 14 April.

Come to the Lane End Community Centre for a 7.30pm start.

Contact Tom Nixey
881436 for tickets.



Do you know Phil Rogers?

A Memorial Cross is placed each year by the Flag Pole outside the Village Hall on Remembrance Day. The name attached to the cross is Phil Rogers.

We would love to hear from the person placing the cross, or anyone else who knows of him, as we do not recognise his name and would like to know more about the history.

Please contact Peter Jennings on 01494 882750

Holy Trinity Pastoral Group

Report by Judy Taylor

A group of people from Holy Trinity Church would like to offer support to anyone in or around Lane End who, because of infirmity and/or loneliness may be unable to meet up with others for companionship.

We come from various backgrounds in teaching, nursing and social care and come to listen and help, not preach. Please call Judy Taylor 881655.

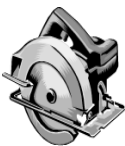


Lane End Older People's Action Group

Report by Jane Osborn

Over 50 with time to spare during the day? Why not come along to one of our Lane End OPAG (Older People's Action Group) meetings on the first Thursday of each month at the Lane End Youth & Community Centre, Edmonds Road. We meet at 2pm to chat over tea and biscuits and listen to an interesting talk.

This year there will be talks on a variety of subjects from Shopmobility to 'On being Harold Wilson's Gardener', and from 'Quito & the Galapagos' to Falls Prevention – do come and join us.



ASPECT CARPENTRY



RELIABLE AND PROFESSIONAL SERVICE

City and Guilds
Qualified

Established 9 years
Serving the local Community

Internal / External Doors
New Windows fitted
Kitchen and Bedrooms
Solid wood and laminate Floors
Staircase Refurbishment

FREE ESTIMATES and COMPETITIVE PRICES

FULLY INSURED, ALL WORK GUARANTEED

Call Duncan Frost on: 01494 880540 - 07811 596 304

Or email: aspectdf@aol.com

Hambleden Valley Gardening Club

Report by Janet Collins

Our winter season of monthly talks has been well attended and we have enjoyed a variety of diverse and thought provoking topics. The November topic was on the history of the apple and the different varieties of apples. This was followed by our Christmas meeting which started with a talk on all aspects of clematis cultivation and finished with our usual party of mulled wine and mince pies.

Our New Year talk started with a thought provoking topic on farming

and food production, in February we heard about the extraordinary properties of the humble potato and we'll be getting advice about creating distinctive containers in March. Please see the What's On page for a full list of our events

We meet through the winter months on the first Tuesday of the month at 7.30 at Skirmett Village Hall. The annual fee to join our club is £10 and there is a door charge of £1 when attending a meeting.

From spring through to autumn, we arrange visits to different gardens in the area.

New members are most welcome. Please call 01491 638690 or 01491 638691 for further details.

Recollections of a former Lane End vicar

"He was a well travelled sort of chap"

In the 1950s and 1960s there was an elderly generation who never travelled far from Lane End. They were born in the village, they worked in the village and when the time came, they were buried in the village. I could at that time look in the Baptism Registers of a hundred years before and find the same surname living at the same address employed in the same sort of job. Then, they were bodgers, pit-sawmen, woodsmen. In the 1960s the young

ones worked at Ercols, Bartlett's, Gomm's, but still in the furniture Industry.

On one occasion I had called on Jack Oakley at the Clayton Arms. The bar was empty apart from a couple of old boys in the corner sitting over a pint of beer. They were discussing another elderly Lane End friend who had just died. Then one said to the other: "You know, he was a well travelled sort of a chap, he went and lived in Stokenchurch for five years". And he meant it. To that generation, Stokenchurch was a world away. C.C-N.



Lane End Twinning Association

Uniting Lane End in Buckinghamshire, UK with Saint-Pierre d'Oleron in Charente-Maritime, France



LETA continues to keep links between the community of St Pierre d'Oleron and Lane End strong despite recent political differences amongst politicians.

LETA's successful Arts and Crafts Market in December was a great example of this. Nearly twenty local artisans were present selling their wares alongside eleven of our French friends who sold a range of produce from Ile d'Oleron.

The day finished with a delicious dinner provided by the Grouse and Ale and dancing to the sound of our local band 'Whipjack'. This event was organised jointly with the Lane End Youth and Community Centre to provide a fitting finale to the 'Christmas in the Village' weekend.

Such activities continue to promote cultural understanding between our two communities but younger people and families with new ideas are needed to maintain these links.

To this end LETA is inviting all those who have been involved in twinning activities and those who perhaps would like to know more about it, to enjoy a glass of wine or two at the Lane End Youth and Community Centre at 7.30pm on Friday 2 March.

Come along and have a chat and find out more about St Pierre and

what it has to offer. There is no charge for this event, just bring along your ideas and enthusiasm!

The LETA French café is a key element of our drive to keep twinning alive. It is held every first Saturday in the month at the Village Hall. Opening times are 9.30am – 12.30pm.

It is a good place to meet friends while enjoying a good cup of coffee with a croissant or two at a very reasonable price. The café also provides a good venue for local producers and artisans to display and sell their wares.

Dates for your diary

**First Saturday of every month
French Café, Village Hall
9.30am—12.30pm**

**7.30pm Friday 2 March
Meet LETA
Lane End Youth and Community
Centre**

**8pm Thursday 29 March
LETA AGM
Grouse and Ale**

Photographs of our activities are featured on our website. Just go to www.le-ta.co.uk to see more.

A letter from Oleron...

Well, Christmas is done and we are well into the New Year. The *Marche de Noel* in St Pierre in mid December went well, and it was good to see the folks from your end with their stall (photo) and some excellent traditional Brit goodies - I was pleased to be able to buy a couple of boxes of mince pies for our church service. This was held in the protestant centre (a very nice modern church) in Royan, and was conducted by our own Chaplain Rev Hazel Doors who has the entire Poitou Charente as her roaming parish.



The *Bassin de Marennes* is presently in the midst of the cold snap, and whilst the days are very sunny (blue and gold as usual) it's very cold and the sea had frozen at the edges as I drove over the viaduct between the mainland and the Ile d'Oleron today.

A week ago it was quite mild however and the first daffodils and mimosa were out. I hope that this cold will not affect the bulbs growing now; it will be a shame to lose any of them.

Our *Festival de Mimosa* is usually held in the second week of February in Oleron and attracts people from

all over France - there are floats and a Mimosa Queen - I am sure she will not be showing too much bare skin this year!

Whatever the weather, the *Os-triculteurs* must work. They are busy out there on the oysterbeds as usual - it must be absolutely perishing! Hard work, and the constant immersion in soft sand and mud by the beds is very bad for rheumatism. The guys are permitted to retire early (after 50 I think) and it is really

justified. The local farmers had already done much preparation for the coming season in the fields before this snap and the winter wheat and other early

vegetables are well on - the most popular early variety is broad beans, with potatoes going into the ground in mid-February.

So another year is underway, and Easter (Paque) will be here soon. I am planning to organise an egg hunt for my little school Ecoleron with some Cadbury's cream eggs (the kids love these) and we shall see how that goes. Meanwhile it remains just to offer our best wishes to you all back there in Lane End, and hope that we shall see some of you here in this beautiful place during the Summer.

A' bientot!

Footpath Update

Report by Margaret Adnitt

Do you enjoy walking? Maybe you would like to explore the countryside but feel a little apprehensive about wandering away from roads or tarmac paths. There are many short circular walks around the village and I would be very happy to take family groups on initial explorations. Spring would be a wonderful time to venture out so do get in touch if you are interested.

margaret.adnitt@gmail.com

Keen photographer?

Why not celebrate the Queen's Jubilee in a different way. We'd like to photograph all our paths within the parish in the year of 2012 – it would be a wonderful historical record for our great grandchildren in 2072!

The start and finish of all paths, together with important features and beautiful views encountered en route would be featured. It would be a very large task and much help would be needed. It's a great challenge, but a very enjoyable one which could involve many within the village.

Do contact me if you'd like to help:
margaret.adnitt@gmail.com

Lane End and District Horticultural Society

Report by Trevor Perrin

The Royal Horticultural Society in partnership with the Horticultural Trades Society has established a driving group to ensure red, white and blue bedding plants are stocked by garden centres across the land in this, our Monarch's Diamond Jubilee year, not forgetting the Olympics in July.

What a challenge, a national planting campaign to show our visitors who we are and what we are about. So we ask: 'Will you fly the flag of Britain in your floral displays and in our annual show in the village hall come 11th August? We sincerely hope so.

At the tail-end of January with the winter thus far being generally mild, many were saying: 'We need some hard frosts to knock out the bugs and break up the soil.'

At the tail end of February we would like an end to the hard frosts and to look forward to spring.

Whatever the weather, we in the Potting Shed are preparing for all eventualities and with a little bit of luck we will get our fair share of produce in the coming months.

With our glasses charged, we wish you well at the threshold of what we anticipate will be an exceptional and momentous year for all of us.

(Local produce growers—check out the produce market on p5, Ed)

Blue Skies is a local business with a portfolio demonstrating a range of landscaping jobs Including-

- * garden clearance and tidy ups
- * patios and decking
- * fencing and turfing
- * full landscaping service from design through to completion
- * garden irrigation—either supply and install or equipment supply only



Visit us at www.blueskiesgardenservices.com
or call **Alex Brown** on **07752 343968** or
01494 882234
to talk about your requirements



Phil Spackman Pest Control Services



Domestic, Commercial & Agricultural.
Insects & Bugs, Rodents & Birds
Moles & Wildlife Management.

Surveys & estimates free of charge
Maintenance contracts available
Fully Insured & BPCA Member

For a speedy, discreet response
and a dedicated, professional service

**Tel: 07947 819554
01494 528240**



Lane End Youth and Community Centre

Report by Emma Savory

As Spring has finally sprung we are filling the diary with lots of exciting fundraising events, so make sure you get your birthday party booked in before the date has gone, and watch this space for more details on fun events and news.

Have you heard about our **NEW classes**? Slimming World every Tuesday, 7.30pm – 9pm, Zumba on Thursday evenings from 6.30pm – 7.15pm, and Bells and Whistles Dog training on Sunday mornings 9am – 12 noon. Along with all our existing bookings, these classes are proving to be a great success. If you would like any information on our range of classes/clubs, please call Emma on the number below or look on our new website.

NEW Website: Our new, re-vamped website is now on-line! If you would like to find out more about the Centre, our clubs/classes, fundraising activities, pricing, availability, contact information or just to have a look at our photo gallery to see what we get up to, please log onto: leycc.co.uk Go on! What are you waiting for? Don't forget to add us on Facebook too!

Monthly Meat Raffle: Thanks to Dave Van Heerde and Neil Edwards, LEYCC is now holding a

Meat Raffle every second Sunday of each month at The Chequers Inn, Wheeler End. Tickets cost £1 per strip or 6 strips for £5, and the raffle is drawn at 3.30pm. So, if you fancy a wander and a pint, or if you are looking for somewhere for a spot of Sunday lunch, then come along to The Chequers and support your local Community Centre. All money raised from the raffle will help to fund Computers @ the Centre, a FREE facility offering friendly advice and support for all your computer needs, open every Thursday 11.30am-2pm.



Bags2theFuture: Following the success of our last collection in September, we are once again taking part in the 'Bags2theFuture' collection scheme.

Please recycle your unwanted second-hand clothing, bedding, curtains, soft toys, shoes, belts and hand-bags by filling your black sacks and leaving them outside the LEYCC gates by 9.30am on Wednesday 14 March. Our last collection raised £65, it would be fantastic if we could double that total this time, as we are hoping to raise £2,000 during 2012 in order to install an automatic door opening system at the Centre for our disabled users. Your help would be greatly appreciated.

Lane End Youth & Community Centre,
Edmonds Road, Lane End,
High Wycombe, HP14 3EJ
Tel: 01494 883878 / 07932 326046
Email: leycc@hotmail.co.uk
Charity Number: 1101360

Forestry work on Bolter End Common

Report by Bryan Edgley

Readers of The Clarion may notice trees being felled in Finings Wood and Bolter End Common in the coming months. This is no cause for concern, since it follows the woodland improvement scheme prepared by John Morris, Director of the Chilterns Woodland Project.

The aim of the Chiltern Woodlands Project is to promote and encourage the sensitive and sustainable management of Chiltern woods in order to protect the landscape of the Chilterns and maintain and enhance its biodiversity. The Forestry Commission has also approved the project on Bolter End Common.

The work will involve a woodland contractor felling about 420 of the trees which are dead, spindly, unhealthy or overcrowded and a few which are growing too close to Finings Road.

Trees grow throughout their lives and need more living space as time goes by. Under natural conditions, competition results in some trees becoming suppressed and these weakened trees may eventually die. Woodland management is about influencing the composition of the woodland by removing trees competing with those that have the best conservation, wildlife and amenity value.

For more information on the Chilterns Woodland Project visit:

chilternsaonb.org/caring/woodlands_project.html

Domestic Cleaning & Ironing Services

- ✓ From just £9.50/hr
- ✓ No hidden extras
- ✓ Times and hours to suit you
- ✓ Honest, reliable workers
- ✓ Same cleaner every week
- ✓ One off cleans available

✓ **Vetted and Insured Cleaners**



Don't Delay - Call Today!

0800 292 2752

dan@maid2clean.co.uk

www.maid2clean.co.uk

New link footpath in Lane End?

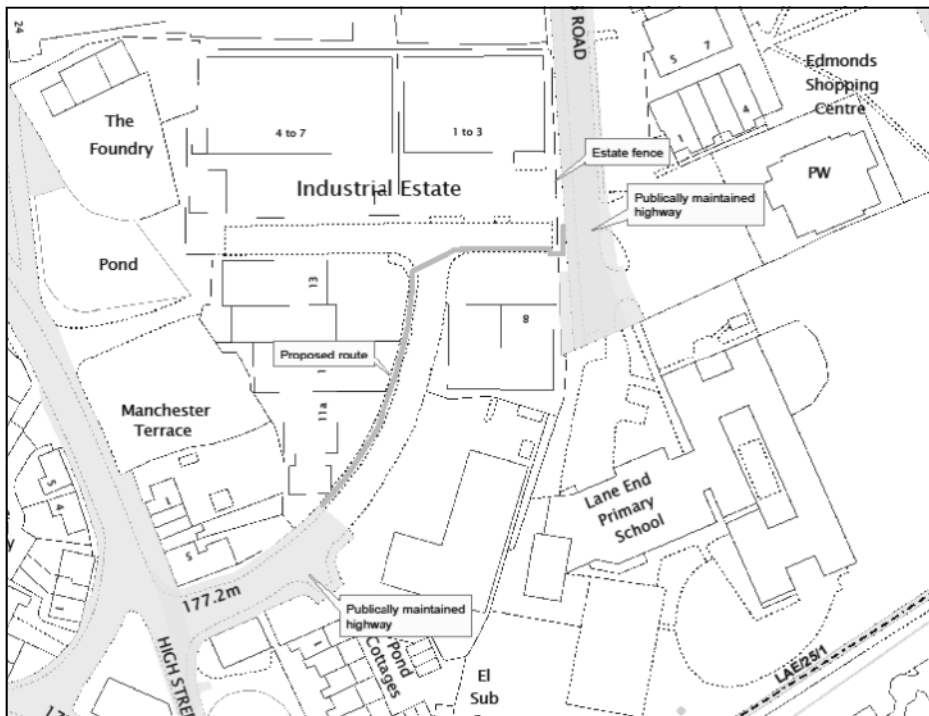
by Katy Dunn

No-one likes to think of Lane End as being a divided society, but there's no denying the physical barriers that exist between the older part of the village (the High Street) and the more recently-built estate with its Edmonds Parade shops.

The Industrial Estate and its fences create a division, and it isn't easy to move freely between the two sides of the village. Since the first people moved into the estate in 1967 Lane Enders have complained about this for a number of reasons. First, it is clearly unhelpful for community co-

hesion—merely the fact that we can refer to the two 'sides' of the village suggests we're not as unified as we should be.

Secondly, it has to have a negative impact on our local retailers. Certainly I would use the Londis super-market more (which I love because of its friendly staff and amazing range of produce for a small store) if I could easily walk there. As it stands, from Finings Road I have to either take a long detour down the dark alley or (because I have young children with lazy legs) go in the



car, which fills me with environmental and slothful guilt! I'm sure the effect is similar in reverse between the estate and retailers on the High Street in Lane End.

The current members of Lane End Parish Council are on a mission to improve things. LEPC has actively pursued the Highways Department of Bucks County Council (BCC) about creating a link footpath through the Industrial Estate.

See below left for a plan showing the proposed route of the footpath. It would link the road into the Industrial Estate from the top of The Row between Manchester Terrace and by the duck pond, to the road leading to Lane End Primary by Edmond's Parade.

'This is one of the key objectives in

the current Parish Plan,' says LEPC vice chairman Mike Detsiny.

BCC has taken this on board and is now in talks with the Industrial Estate's member companies. It is a difficult issue for them as their security could potentially be compromised by through-access past their premises.

BCC told LEPC that it would like to gauge the level of public support for the proposed footpath, so LEPC has organised a petition. It is hoped that the initial petition will be presented at the Local Area Forum (quarterly meeting between BCC and local parish councils) at the end of Feb, but you can still register your support as the petition is still available to sign in various shops around the village.

JHC ELECTRICAL SERVICES & Property Maintenance

James Clark

All types of Electrical works undertaken

Rewires, in/outside lights, down lighters, new fuse boards, additional sockets, security lighting, fault finding and CCTV
City and Guilds/NICEIC Part P Qualified/IEE 17th Edition

All aspects of property maintenance carried out

Mob. 07720 598860 Tel/Fax. 01494 881766

The Dog House, 10 Elwes Road, Lane End, Bucks.

Email: jhcelectrical25@aol.com

www.jhcelectrical.co.uk



Fully Insured and all work Guaranteed.

Honest, Local, Reliable Tradesman. Established 12 years

A member of the Bucks County Council Trading Standards "Buy with Confidence Scheme"

Friends of Holy Trinity Church



It is clear, from conversations that I have with a cross-section of people around the village, that our parish church, Holy Trinity, enjoys considerable goodwill from the majority of you living in the five Ends. When it comes to rites of passage, be they baptisms, marriages or funerals, I am called upon as a matter of course, and rightly so.

There is, as we know, a huge difference in numbers between those who attend Sunday Services regularly, and those of you who, for whatever reasons, choose not to join the congregation. It is the smaller number, the regulars, who keep the church afloat financially. They do this both by their financial giving and by their organisation of, and running, fund-raising events.

I want to ease the burden on the smaller number of active supporters. For this reason I invite those of you who want to see the church continue to operate here, to become a "Friend" of Holy Trinity. This can mean offering us financial or hands-on assistance, or both. I wonder whether the equivalent of the cost of a 50p Mars Bar per week, annualised, is too much? We are looking for modest contributions, but lots of them, and support with our social events.

To help, please ring me on 881913 or write to me at The Vicarage, 7 Lammas Way, Lane End, HP14 3EX. Thank you. *Reverend Robert Jennings*

I am interested in becoming a Friend of Holy Trinity Church.

Name.....

Address.....

.....Post Code

Tel: No:

Email

Standing Order Forms available from Sheila Keatinge, 13 Slayter Road, Lane End, Tel: 01494 882437 or Gill Bettison, 3 Park Close, Lane End, Tel: 01494 882469

Thank you.

AFTERCARE SERVICES

We have all lost loved ones, special friends and even pets. They are always in our thoughts, but everyday life gets in the way and finding the time to tend your loved one's grave can be a struggle.

Why not talk to us with your specific requirements and let us take the time on your behalf to tend the resting place of those who are never forgotten.

- ♥ headstones washed
- ♥ silk flowers cleaned
- ♥ fresh flowers replaced
- ♥ weeds removed
- ♥ fully insured

Our services are carried out with great respect to the graves we are tending

For more information call the girls on

07583 245082 or 07805 545328



IAN. J. BEASLEY PROPERTY MAINTENANCE HOME IMPROVEMENTS BUILDING SERVICES

- ♦ **Small building projects**
- ♦ **Kitchen & Bathroom fitting**
- ♦ **Shower rooms & showers**
- ♦ **Wall & floor tiling**
- ♦ **Internal & external:**
- ♦ **Alterations**
- ♦ **Carpentry work**
- ♦ **Decorating**



Over 35 Years experience

Contact: Ian

Tel: 01494 881100 Mobile: 07720 251320

Email: I.beasley@homecall.co.uk

Building Developments latest

by Katy Dunn

The Old Sun

This application was to convert the former pub into a 3-bedroomed house along with building two new pairs of 3-bed semis on the site.

Progress has stalled as Wycombe District Council (WDC) requires that 30% of the bedspaces (equating to one and a half of the new houses) be allocated to Affordable Housing. This makes the project uneconomic for a small-scale company like Henley Renovations.

'We are in the process of producing

a Viability Study to demonstrate that it doesn't add up,' says a spokesperson from Henley Renovations.

'We are somewhat discouraged as we have cooperated on all the detail WDC has asked for, including specialist surveys of the landscape, trees, ecology etc and the plans have the support of Lane End Parish Council and most residents.'

Sidney House

Sidney House (accessed from Park Lane via Mt Pleasant in Lane End) was a sheltered home for the eld-

**LOCAL, RELIABLE
SERVICE**



Property Maintenance

Plumbing and General Repairs

Leaks Repaired, New taps, Showers, Pumps, Radiators, Sinks, etc
New Lights, Sockets, Outside Lights

Call Paul

Tel: 01494 485396 M: 07883 341496

Internal / External Painting Garden work / repairs

Call Kevin

M: 07800 894322

erly, but has lain empty since the last residents moved out in 2004.

Various attempts have been made to put the building back into use, but plans have come to nothing until now. Four years ago, WDC held a competition to redevelop the Sidney House site, which was won by Catalyst, a registered social housing landlord. Only recently has the funding become available to take plans forward.

Catalyst held a public consultation in December and on the strength of that feedback is submitting a planning application for 13 new homes. The plans are for four 3-bed and

nine 2-bed terraced houses, for local authority social housing use. The existing buildings will be re-used in the development.

Elga site

This application was to redevelop the redundant Elga site with a mixed-use scheme of 42 homes, including 13 affordable homes and five commercial units.

Developer Ashill is awaiting a decision on the revised plans from WDC. Ashill is anxious to press ahead as people keep breaking into the site and they are getting complaints from residents.



Simply NUMBERS is based in Lane End. We are a company of **book-keepers** and **accountants** serving local businesses. We have a wide variety of services that can help everyone from individuals to Limited Companies. We tailor our work to our individual client's needs to make sure we provide the most cost-effective and useful services to meet your requirements.

**Year End, Tax Returns, VAT Returns, Credit Control
Admin & Filing, Payroll Services, Personal Tax Returns
Bookkeeping Services, Management Accounts**

Why not give us a call, send us an email or we can pop in for a chat - we always like to meet new faces!

www.simplynumbers.me
simplynumbers123gmail.com

Mobile: 07818 231 860
Telephone: 01494 629244

Essex House site

Planning has been granted for Essex House to be converted into two flats. However, planning permission for one 3-bed detached, one 4-bed detached and a pair of 3-bed semi-detached cottages (plus garages and carparking) in the land to the rear of Essex House has been refused.

The reasons for the refusal are complicated, but the decision seems to have been based not on the principle of developing the site for housing, as the council approves this, nor on the layout or look of the proposed houses themselves, which it says is in keeping with the area, but upon the detail of how much of the development is allocated to affordable housing.

(For full details see the appeal decision details online here:

publicaccess.wycombe.gov.uk/idxpa-web/files/F0C98751E758A5B9FE59E04C376C8247/pdf/11_05302_FUL-APPEAL_DECISION-632592.pdf

The Old Ship

'After a number of delays throughout 2011 works to install new cellar cooling equipment and restore internal features will commence in the coming months. Beyond this, there is still much work to be done to ensure the pub complies with relevant legislation such as the Food Safety Act etc. We apologise for the continued closure of the pub and any inconvenience caused to the village and whilst we are not yet in a position to indicate a re-opening date,



**Now offering
FREE Forest
School Sessions**

Sunshine

MONTESSORI NURSERY

@ The Old Village School, Bullocks Farm Lane, Wheeler End, HP14 3NH

- Full day care nursery
- Open 51 weeks/year 8am to 5.45pm
- Babies (3 months) to 5 year olds
- Spacious, bright, rural aspect
- Holiday childcare available
- FREE 15 hours per week for 3 & 4 year olds

www.sunshinemontessori.com

Phone: 01494 880607

when it does, it will be as a free house, serving real ales and fresh foods.' *Chris Leadbetter, owner*

Stone House—vet surgery

A planning application has been submitted to WDC to turn Stone House (on the High Street, opposite the top of Church Road) into a veterinary surgery.

The agent, Jake Collinge says: 'My client is looking forward to opening-up their practice in Lane End, especially given that the owner is originally from the Lane End area. However, whilst planning permission has been granted to use Stone House as a Veterinary Surgery, that permission was subject to some

conditions which, unfortunately, mean that the owner is unable to commit to taking a lease on the premises.

There is a condition that states no animals shall be kept on the premises overnight. Whilst this is not the intention, there may be occasions where an animal is too sick/critical to be transported, and thus the flexibility of allowing animals to remain on site is important to the business.

I have, therefore, made a further application to WDC to remove the condition. We are both hopeful that the condition will be removed since, without its removal, it is very unlikely my client will be able to bring her practice to the village.'



D.J. MACLEOD

FORESTRY, FENCING AND ESTATE CONTRACTORS

Supplier of quality seasoned firewood

Tree and hedge planting, surgery, felling, maintenance,
grass cutting and scrub clearance

All types of fencing and gates

Supplier of wood chippings

Telephone 01494 882901

Mobile 07850 724023

www.donlogs.com

Email: djmac@globalnet.co.uk

Cedar Cottage
Parmoor

Henley-on Thames RG9 6NN

M40 Chilterns Environmental Group

Report by Ken Edwards

M40 is noisy – official! BUT it is a £1M challenge

DEFRA's maps of noisy locations in England list 14 locations on the M40 in our area (Loudwater – Wheatley).

They include three stretches in Lane End Parish, all on the south side of the motorway. One extends either side of Bullocks Farm Bridge, roughly from Pusey Way to the corner on Four Fields Footpath (LE33). The second extends from the over-bridge at Bolter End Lane behind the houses in New Rd. The third is near Cadmore End School.

The first two are listed as First Priority Locations for attention by the Highways Agency. The Agency tells us that their plans for these locations include improved noise barriers and, later, a quiet road surface. This is the first time that the

Agency has agreed that the current barriers are inadequate. The initial focus will be on barriers, as the life of the existing noisy road surface continues to be extended by chemical treatments.

Minister Mike Penley, responsible for the Trunk Road network, has advised local MP Steve Baker that action could be scheduled for 2013/14. However, action will depend on the priority allocated to our locations, and, critically, on availability of funds. We all know that funds are short – and barriers locally will cost about £1M.



We should be under no illusions - formulae used in the past to rank places for noise mitigation ranked Lane End in the lowest of five categories. Previous work by M40 CEG with Wycombe District Council provided evidence to improve the priority assigned to us.

We believe the challenge is now to show how the costs can be reduced or offset. We have some ideas to discuss first with Lane End and other Parish Councils. With their continuing support, we believe a very strong case for action will be



Milk Men

with Will Lacey 



tense times with tB testing

When working with cattle there is always something to be done and, as far as I'm concerned, there are generally three types of jobs:

The daily routine

These, as the name suggests, are jobs that need to be done everyday like milking, feeding and bedding the cows down.

Occasional jobs

These jobs are not required every day but are vital to the functionality of the farm— things like mucking out sheds and harvest work.

Emergency work

These jobs ruin any plans you've made and take priority over everything. The most likely cause of this is a cow calving late at night and my uncle Gideon missing out on a good hour's worth of sleep!

I mention the different types of jobs only because the start of the year is a good time for doing some occasional jobs. One unpleasant occasional job we had this year was to test our cattle for tB. Bovine Tuberculosis (tB) is an infectious disease

of warm blooded animals and there is a legal requirement in the UK to test cattle for it.

The regularity of testing is dependent on your previous test results, where your cattle have come from originally and the area in which you live. We are fortunate that our previous test results have been clear or negative, which is what every farmer is hoping to achieve. All the cattle on our farm are born and raised here, so that reduces the risk of bringing in disease, and the area that we farm is regarded as low risk, so we have to test our cattle every four years.

In January, it was time to test our cattle. This requires the vet to come and measure and record the thickness of the skin on every cow we have, and then give two injections in to the neck of each animal. After three days the vet returns to again measure the thickness of the skin on the injection sites and make a comparison with the original reading. If there is no or little change then that animal is 'clear', and when

the whole herd is clear we know everything is ok.

If one animal were to test positive then she would automatically go for slaughter and the whole herd would have to be retested regardless of the original test result. Testing would continue every thirty days until the whole herd passed clear again. A third possible outcome is for a test failure or inconclusive reading, and this would also result in retesting the whole herd again.

TB testing in cattle in the UK has been a legal requirement since the 1950s and the transmission of TB from cow to cow is very low due to this strict

regime. It is however a disease of warm blooded animals so is apparent in some of our wild animals as well.

Since the Protection of Badgers act 1992 which made it illegal to kill badgers, cases of TB have gone from only a few hundred in 1990 to 25,000 in 2010. Even with our careful management and the legal requirements that are in place, cases of TB, particularly in the South West have risen sharply due to the affected wildlife.

This cost the UK Taxpayer 87 million in 2009/10. Until something is done to reduce the levels of TB in

our wild animals, TB is going to be an unnecessary risk. The government approved plans in January for a trial badger cull in two test areas, so we will wait to see the impact that this has.

The three days we had between tests gave me plenty of time to think. As our previous test results were all clear, we'd hope for the same outcome this time, but it's a nerve-wracking time as the result is literally life or death for our cows.

After 'reading' all the injection sites on every cow I am pleased to say that all 121 cows tested were clear and there is no need for any re-testing.

Lucy's calf

On a final, unrelated note—for those of you who made it to our Christmas Fayre and met Lucy the heavily pregnant cow, I am pleased to tell you she did eventually calve, 10 days over due, with a strong healthy Guernsey Bull calf.

Lucy has since rejoined the herd to be milked, and the calf has joined a small group to be reared up indoors until the weather improves in the spring when they will go out to graze. Plans are also well under way for our spring fayre which will be on Saturday 22 April, with the young lambs playing centre stage.



YOU'VE SEEN OUR COWS IN THE FIELDS - NOW TRY THE MILK!

FRESH 100% GUERNSEY MILK

FROM YOUR LOCAL DAIRY



DELIVERED DIRECTLY TO YOUR DOOR!

LACEY'S FAMILY FARM, BOLTER END FARM, LANE END, BUCKS. HP14 3LP

TEL/FAX: 01494 881 979 WWW.LACEYSFAMILYFARM.CO.UK

PRODUCTS AVAILABLE FROM OUR FARM SHOP OR HOME DELIVERY

DOGWATCH

**An email-based free service available to anyone in the
Thames Valley Police area**

Highly professional dog thieves are at work in the Thames Valley area. The main targets have been working dogs in rural areas, particularly spaniels and terriers, Labradors are also popular.

Join Dogwatch, and if your dog is stolen, report it to Dogwatch as well as police. (Police resources are allocated according to crime statistics, so however small the crime, report it so that police get the resources they need.) Dogwatch circulates all details to rural beat officers, RSPCA inspectors and dog wardens in the Thames Valley.

If you see someone snooping in farmyards, garages and gardens, they could be scoping for a theft. Get a good description of him and his vehicle together with reg. no. and tell Dogwatch. It's surprising how many vehicles reported are on the 'wanted' list. Join today at:

dogwatchalert.com

Your day by day
guide to local
meetings, clubs
and events



What's On?

To include your event or group meeting (free) email: katyjdum@btinternet.com
Please also be sure to inform me of any changes

Mondays

Regulars

Simply Walk—10am Meet Lane End Playing Field's car park. Walk and chat for 1-2 hours

LEOPAG (50+)—10.30-12.30am coffee pop in Lane End Youth and Community Centre (LEYCC), Edmonds Road, Lane End. Tel: 883878

Dinky Dancers—10.30-11.15, Lane End Primary School Tel Sure Start 477110

Gentle Exercise for over 60s—2-3pm LEYCC

Baby Welfare Clinic—2-4pm Lane End Village Hall

Lane End Parish Council Meeting—First Monday of the month, 7.30 in Lane End Village Hall

Lane End Evening WI—Last Monday of the month at 8pm in the Sycamore Room, Village Hall

Mustang Country Linedancers—7.30-9.30pm LEYCC

Bridge Club—7.30pm Lane End Village Hall

Events

March

5th **LEPC mtg**—7.30pm Lane End Village Hall

12th **Open afternoon Frieth school**—2-3pm at Frieth school

April

2nd **LEPC mtg**—7.30pm Lane End VH

May

Tuesdays

Regulars

Bumps, Babies and Toddlers—10-11.45am, Holy Trinity Church, Lane End. Tel 883647

Parent & Toddler Group—9.30-11 Lane End Primary School. Tel Sure Start 447110

Tuesday Luncheon Club—11am-2pm Elim Centre. £5 Tel Maggie 881261

Zumba—7.30pm Lane End Village Hall Tel Cheryl 07812 180076

Slimming World—7.30-9pm, contact Rachel Sherlock on 07866260158

Hambleden Valley Gardening Club—7.30pm, First Tuesday of the month, Skirmett Village Hall. Tel 01491 638690

Wednesdays

Regulars

Music & Rhymes—9.30-10.15 Lane End Primary School. Tel Sure Start 447110

Lunch Bunch—parent and toddler group, 11.30am-1.30pm, Elim Centre, Tel 882587

OASIS Cookery—10am-12pm, LEYCC, Contact Pastor John 881112

JUMP—children's club, 3.45-5.30pm, Elim Centre Tel 882587

Bridge Club—2.30pm Lane End Village Hall

Junior Youth Club—for 8-12 years, 6-8pm LEYCC

School of Traditional Medieval Fencing—7.30pm Lane End Village Hall

Events

March

6th **Hambleden Valley Gardening Club**—7.30 Skirmett Village Hall, Talk: Distinctive Containers by Kathy Brown. Tel 01491 638690

April

28th **Hambleden Valley Gardening Club**—7.30 Skirmett Village Hall, event: Plant Swap. Tel 01491 638690

May

1st **Annual Parish Meeting**—7.30pm Cadmore End Village Hall

3rd **Hambleden Valley Gardening Club**—visit to Chenies Manor gardens (renowned collection of bulbs). Tel 01491 638690

4th **Maypole Dancing and opening of log cabin**—1.30pm Cadmore End school

8th **Annual Meeting of the Parish Council**—Cadmore End Village Hall

Events

March

April

18th **Open Afternoon Frieth School**—2-3pm at Frieth school

May

Thursdays

Regulars

Simply Walk—10am Lane End Playing Field's car park. Walk and chat for 1-2 hours

Coffee Stop—Village Hall 10-12noon. Coffee and chat. All welcome, run by Methodist Church

Physical Fun—9.30-10.30 Lane End Primary School. Tel Sure Start 447110

Computers@The Centre—11.30-2pm LEYCC

The Drop-In (Social lunch) - 12-2pm LEYCC

Four Ends Flower Club—Fourth Thursday of the month 2pm in Lane End Village Hall. Visitors £4.50. Flower arranging demonstration, raffle, tea and cake. Contact 883096

Circle Dancing—First Thursday of the month, 2pm Lane End Village Hall. Contact Mary Williams 01235 520608

LEOPAG—First Thursday of the month 2-4pm LEYCC

Methodist Church Wives group—2nd Thursday of the month 2-4pm LEYCC

Citizens Advice Bureau—12-3pm, Lane End Primary School. Tel 07717 652302

Line Dancing for Beginners. 7.30-9.30 Frieth Village Hall

Zumba— 6.30-7.15, LEYCC Tel Mel on 07827911209

Lane End Players—8pm Village Hall Tel 07706 426320

International Curry Night—evening at The Tree, Cadmore End

Events

March

29th **LETA AGM**—8pm Grouse and Ale

Fridays

Regulars

Look at Me! —9.30-10.30, Lane End Primary School, Tel Sure Start 447110

FSFH Circuit Training—9-10am LEYCC

Live Rock—first Friday of the month in the evening at The Tree, Cadmore End, with JJs. Tel 881183

Live Jazz—last Friday of the month in the evening at The Tree, Cadmore End, with Tim Dawes & Friends. Tel 881183

Ladies Cocktail Night—every week at The Tree, Cadmore End

Events

March

2nd **Find out about Lane End Twinning**—7.30pm LEYCC

16th **Village Hall Quiz**—7.30pm, Lane End Village Hall. For tickets Tel Christine 881913

30th **Holy Trinity Whist Evening**—7.30pm Lane End Village Hall, Tel 881913

April

14th **Holy Trinity Skittles Evening**—7.30pm Lane End Village Hall, Tel 881913

27th **Lane End Players' 'The Foreigner'**—7.30pm, Lane End Village Hall. For tickets Tel 07706 426320

May

4th **Lane End Players' 'The Foreigner'**—7.30pm, Lane End Village Hall. For tickets Tel 07706 426320

25th **Holy Trinity Whist Evening**—7.30pm Lane End Village Hall, Tel 881913

Saturdays

Regulars

Coffee Shop—every other weekend, 10-12noon Village Hall, check calendar overleaf for details

Lane End Conservation Group Action Day—10am First Saturday of the month meet in the Car Park by Lane End Surgery

Events

March

3rd **Twinning Association Coffee Shop.**
10-12noon, Lane End Village Hall

10th **An evening with Barbara North**—everything there is to know about Old Lane End and more. Lane End Village Hall. For tickets Tel 881913

17th **Holy Trinity Coffee Shop,** 10-11.30
Lane End Village Hall

April

7th **Twinning Association Coffee Shop.**
10-12noon, Lane End Village Hall

14th **Royal British Legion Quiz**—7.30pm
LEYCC. Tickets Tom Nixey Tel 881436

21st **Holy Trinity Coffee Shop,** 10-11.30
Lane End Village Hall

28th **Lane End Players' 'The Foreigner'**—
7.30pm, Lane End Village Hall. For tickets Tel
07706 426320

May

5th **Twinning Association Coffee Shop.**
10-12noon, Lane End Village Hall

5th **Lane End Players' 'The Foreigner'**—
7.30pm, Lane End Village Hall. For tickets Tel
07706 426320

19th **Holy Trinity Coffee Shop,** 10-11.30
Lane End Village Hall

Sundays

Regulars

Parish Communion—9.30 Holy Trinity Church Lane End (crèche first Sunday of the month)

Elim service—10.30 am at Elim Christian Centre, Edmonds Road, Lane End

Whistles & Bells dog behaviour school—
9-12noon LEYCC, Tel Jenny 07703020344

Sung Eucharist/Family Service—11am St Mary's Church Cadmore End

Morning Service (Methodist)—11.15am
Holy Trinity Church Lane End

Sunday lunch—Grand International Buffet
at The Tree, Cadmore End. Tel 881183

Evensong—6pm Holy Trinity Church Lane End

Lane End Players—7.30pm Village Hall Tel
07706 426320

Events

March

April

May

20th **Walk on Moorend Common**—with
Bucks Berks and Oxon Wildlife Trust. Non-
members welcome. Meet South Meadow (off
the Frieth-Marlow Road) 2.15pm.

Nature notes

We are incredibly lucky to have such wonderful countryside all around us. Alan Gudge, Chair of Frieth Natural History Society, tells us what we should look out for in spring.

From March through to the end of May we experience the natural transition from winter to summer when many types of wildlife are emerging. During March watch out for butterflies emerging from hibernation and taking to wing; Brimstone, Small



Peacock butterfly

Tortoiseshell, Red Admiral, Comma and Peacock (pictured right) may all be seen during warm spells.



Dog violet

Soon afterwards the Speckled Wood may be seen in sunny spots in woodland. On the ground there should be Lesser Celandines, Primroses,

Dog violets (pictured left) and

Sweet violets and by the end of the month the first Bluebells may be coming into flower as they were last year. This is a good time, before the leaves obscure things, for observing birds as they select nesting sites and construct their nests.



Mad March hares

In open fields, look out for hares, displaying "mad March" behaviour. Into April and the first return-

ing migrant

birds should appear; Swallows and House Martins are first, followed by Swifts as we move into May.



Listen out for the Chiff-chaff (pictured below) whose call sounds like its name and →

Chiff Chaff



Southern Marsh Orchids

of course, the Cuckoo. Also in April, Orange-tip butterflies should appear, the females looking for Lady's Smock or Garlic Mustard on which to lay their eggs. Badgers will be hungry as they raise their young underground and you may see them out and about at dusk as the days lengthen.

The first blue butterflies to appear towards the end of April are Holly Blues. When we get to May, plant growth explodes with many more flowers.

By the end of May the Southern Marsh Orchids (pictured above) should be in full flower on the south side of Moorend Common; there have been about 5000 of them for each of the past 20 years. We live in a good area for wildlife and any of the local commons and woodlands are rewarding to walk in during the spring months when nature is busily engaged in procreation.

Alan Gudge

Did you know we used to have salamanders in Lane End?

So says erstwhile Lane Ender Bob Dobbs who as a child used to play in 'The Golden Guff' - the woods between the churchyard and Meakes' metalworks yard.

'I think these were a rare colony as all websites say they are not native to the UK and only a few Salamanders have escaped captivity into the wild. I remember them being black and white and twice the length of a fully grown newt. Were they introduced from Charles Forgett's ponds, I wonder?' asks Bob.

Any sightings, do let us know!



I was out running in the West Wycombe Estate woods at the top of Chipp's Hill the other day and saw what looked like a snake weaving through the grass. I stopped in surprise as it became apparent that it was the 3ft long tail of a Reeves pheasant and the bird was running towards me rather than away.

Reeves pheasants are beautiful, (picture next page) they have bandit-like black eye masks and golden/black/white feathers patterned like fish scales along their body and the most luxuriantly long, elegant tail.

This one was very friendly and circled around me as I stood, →

wondering what to make of the situation. This one was very old as its beak was so long that the top and bottom parts crossed, and its feathers were starting to look tatty.

We communed a while, me bemused, he curious, then I gently moved off to continue my run. The bird stretched out its little neck like a road runner and actually ran along-

side me until I came to an open field, then it retreated back into the wood. It was the most curious and surreal, but lovely encounter.

Katy Dunn

If you've got any similar stories, any local wildlife photos, or tips of great places for wildlife watching locally, do share! Email me at: katyjdunn@btinternet.com



CHIMNEY SWEEP Ivan Staines

**Prompt-Clean-Reliable
Full Brush & Vacuum Sweep
Fully insured
All types of pots and cowls fitted**

Tel: 01844 212382

Moorend Common

Report by Katy Dunn

LEPC contract with Natural England runs out in March

Lane End Parish Council's (LEPC) Wildlife Enhancement Scheme Agreement (WES) with Natural England for restoration works on Moorend Common runs out in March 2012.

NE has made a considerable investment in Moorend Common to raise it from 'failing' status as a SSSI to now 'recovering' and the Parish Council is obliged to maintain the works that have been carried out or risk a fine. We're currently investigating various grant schemes with NE and the Forestry Commission to relieve pressure on LEPC for statutory requirements such as grass cutting.

Visits

The works carried out over the past five years on Moorend Common have been much praised by conservation authorities and it is often held up as an example of what can be achieved - how lost habitats can be restored. Moorend Common is currently the most species-rich common in Buckinghamshire. This year we're expecting visits from several Friends of Commons groups in the Chilterns to learn from Moorend's experiences.

Bucks, Berks and Oxon Wildlife Trust is also coming to Moorend Common on Sun 20 May, 2.15pm.

Non-members are welcome. Details will soon be on the BBOWT website (http://www.bbowt.org.uk/more_events26.asp)

Last phase of works

The last works under the Natural England contract involves thinning of the trees in the area to the left (if you're coming down the road) of the top lay-by on Church Road - the one with the bollards. The area under consideration stretches to the top of Middle Meadow and back to the definitive footpath.

This is currently an area of poor quality woodland. The intention is to rejuvenate the area by removing the weakest trees and coppicing hazel and willow. Most of the open oaks will be retained unless they're considered dangerous. The idea is to create an area of thriving wood pasture with a good diversity of habitats, open up sightlines to the meadow and create better connections between the different habitats.

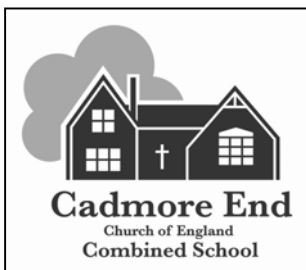
The area has been surveyed by two independent specialists to ensure the planned works will only have a positive effect on the ecology of the area, and by the Forestry Commission to ensure they are also happy with the works.

Work started on Monday 20 Feb and continues for a week or two.

Go for a walk in Spring

Moorend Common is teeming with wildlife whatever time of year you take a wander, but spring is especially good. Look out for Orange Tip butterflies and listen for the cuckoo.

Schools



With Spring around the corner, everyone at Cadmore End is getting excited for the grand opening of our log cabin!!

We have also just gained an extra £5000 due to a kind donation from St. John's Primary School, Reading (also Oxford Diocese) to complete the project. This will be a fantastic base for our forest school activities and extended services.

Come along to our festival on Friday 4 May at 1.30pm for our traditional Maypole dancing and grand opening of the log cabin. It will be a lovely afternoon, with refreshments also being served.

Years 5 and 6 are looking forward to their residential trip in June. They have also been busy running a 'Healthy Options Tuck Shop'. The pupils and staff are very proud of their healthy school status and a mini-enterprise business plan was set up selling a variety of healthy treats. This was very popular with all the school years and staff too!

Class 3 also had an educational school trip to Henley River & Rowing museum last month.

Classes 1 & 2 have been busy with their forest school walks, enjoying being out in the fresh air and exploring the wonderful local woodland walks.

We have lots to look forward to over the coming month or two including a gymnastics competition, Easter activities & church service.

Please contact the school office if you have any queries regarding Cadmore End Church of England School on 01494 881460.

Emma Spencer, School Governor

Lane End Primary School

Last term was very busy with lots of Christmas festivities taking place. The children thoroughly enjoyed demonstrating their singing and recorder playing at the Christmas in the Village events.

The Early Years/Key Stage 1 Christmas performance was well received, as was the Christingle

Service, which due to snow, took place at school rather than Holy Trinity Church. Many thanks to Reverend Robert Jennings for taking the time to share with the children the true meaning of Christmas as well as playing the piano for our carols!

Following a brilliant poetry workshop that Amethyst Class (Year 5 & 6) took part in last term, the children were invited to once again join Joelle Taylor from the Poetry Society at the SLAMBassadors Poetry competition at Wycombe Town Hall on 20th January.

The children delivered an extremely confident and professional performance which was full of enthusiasm. As you can imagine, we were delighted to be awarded a 'highly commended' certificate as we were the only primary school amongst secondary aged children to take part. A big well done to Anushka Bellur, Hannah Gould, George Whittome, Mikaat Khan, Jacob May, James Harris and Jordan Lock for being such great SLAMBassadors for their school!

Debbie Williams, Head

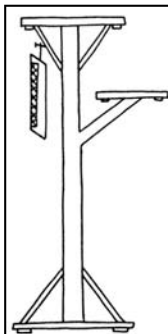


We're very excited as the pre-school has been awarded a grant to enhance our provision for two-year olds. We've a lot of little ones at the

pre-school at the moment and it's great that we can buy more equipment appropriate for their age.

Outside, we'd like to create an 'anything goes' corner with big pieces of construction equipment so that they can let their imaginations fly.

We're looking for donations of milk crates, smooth planks of wood or anything similar that the children could build with or create stepping stones etc. We've also got permission for a bird table, so if anyone has any advice about the best type or could possibly donate or build one for us, we'd be very grateful.



We've had a great response from our fund-raising activities— thanks to parents for all they've done and to Rachel Wallace for donating part proceeds from the pre-school photos. It means we've been able to buy all-in-one waterproofs for the little ones to keep them clean and dry as we do like to go out in all weathers.

The dry-suits have been particularly useful in the snowy weather as the children have really enjoyed building snowmen and pulling each other along on sledges before coming back into the warmth for some hot chocolate and toast.

We still have a few places left, call us on 07703 926196



This past week I have enjoyed listening to many of the children read. I am both pleased and amazed at the reading skills of the

children across the school, but a particular well done must go to the children and staff in Owls' class, as many of the Reception children are now reading.

I also had an enjoyable session with the children of Kestrels' class as they explored the merits of an electric typewriter. Our whole school topic this spring is 'Made in Britain' and has been the focus for our work in geography, history, art and design and technology.

We have been focussing on the

decades between 2000 and 1950, finding out about some of the famous people, inventions, and key events from this period, hence the typewriter.

Congratulations to the children who recently participated in an inter schools cross country event. Praise was unanimous for the children's sporting attitude and how eagerly they supported one another across the finishing line. Special congratulations to Aimee Markwell who came 6th out of over 100 competitors in her race.

In a recent inter schools rowing competition, with members of the local liaison group, both Years 3 & 4 and Years 5 & 6 came first. The conclusively rowed their way to victory. *Lindsay Phillips, Head*



Developing potential without limitations"



Open afternoon at Frieth CEC School

**Monday 12 March 2-3pm and
Wednesday 18 April 2-3pm**

Pre-school panic about where to apply?

The best way to feel confident about your choice of school is to spend some time there, have a chat with staff and other parents and get a feel for the place.


We are hosting two open afternoons so you and your children can get to know Frieth. Come and enjoy an afternoon tea while your children get stuck in to some fun activities with Miss Brooks, our Reception teacher.


**Please contact the school on: 01494 881554 or email
office@frieth.bucks.sch.uk to book your place**

Ask the: PC paramedic

with Paul Rubens 



Question  People from Microsoft have called me saying they can fix my computer—should I trust them?

Answer  A number of people have received phone calls from fraudsters posing as Microsoft employees. They claim they are monitoring computers and have noticed 'errors' that could indicate a virus infection. They are very convincing, and ultimately they ask for about £80 to fix the problem.

In fact Microsoft staff do not monitor anyone's computer, and certainly don't call people up and offer to fix their machines for £80.

So please, if you receive a call like this, don't give out your credit card details, don't download any software on the caller's instructions (it will probably contain a virus) and hang up immediately.

You can find out more about this scam and how to report it by visiting the National Fraud Reporting Centre's web site at actionfraud.org.uk/bogus-microsoft-engineers-strike-again-nov11

GOT COMPUTER PROBLEMS?



- Wireless networking
- Data recovery
- Viruses and crashes
- Internet setup
- Hardware upgrades
- Email problems

For help with your home or small business computer

Call Paul: 01494 881635

Friendly local service since 1998
No call out fee—low cost—no job too small

On the land

with Bryan Edgley 



GM crops—good or bad?

The late winter months on an arable farm are the time for maintenance work, such as machinery overhauls, cutting back overhanging trees and trimming hedges while we wait for the drier conditions and warmer soil temperatures. Generally, March is when the first applications of fertiliser can be spread on the fields.

The main productive work over the winter has been checking the condition of grain in grainstores and loading lorries with wheat. This is the milling wheat to be used for making bread and biscuits, that was harvested in August 2011, from fields that had been seeded in September or October 2010, with seeds that had been ordered in May 2010, following a cropping plan that we had worked out in Autumn 2009. So farming is not a trade where next week's production will be governed by this week's sales.

Farmers have to accept the ups and downs of the world grain trade. If there have been bumper yields of grain in countries as far away as Australia, Russia or America then world supply will be in excess of

demand, as it was in January 2010 when feed wheat traded at £95 per tonne. However if there has been drought and crop failures in other parts of the world, causing a shortage of grain on the world market, then the same quality of feed wheat could trade at more than double the price, such as the £200 per tonne that it was worth in April 2011, but by December 2011 this had fallen back to £135 per tonne.

On the subject of global food security, meaning whether or not there will be enough food for a growing world population, many scientists think that genetically modified foods (GM foods) will have to be more widely used in the future. In the USA 93% of soyabeans are now grown as GM crops, whereas in 1996 when this technology was being developed, only 5% of USA soya was genetically engineered. Soyabeans are a very important vegetable protein, used in most poultry, pig and cattle feeds throughout the world, but the crop can only be grown in hot climates.

Most of the soya imported into the UK for animal feeds has been genetically modified, since very little traditionally bred soya has been grown in recent years. But in Europe there has been a fierce anti-GM food campaign, led in the UK by environmental groups, egged on by some newspapers. These campaigners, who talk of “Frankenstein foods”, do not take note of the life saving advantages of some GM foods and plants in third world coun-

led, so that where one tonne per acre was grown in the 1940s we now grow over three tonnes. Genetic engineering is different to selective breeding, in that by using the soil bug *Agrobacterium*, desirable traits from an unrelated species of plant can be introduced into the species of plant that needs improvement e.g. for greater drought resistance, improved nutritional benefits, tolerance to specific weed killers, or more resistance to pests or diseases.



tries, such as golden rice in which the Vitamin A content is boosted, or varieties of crops which are resistant to drought, or to excessive salt, or insect-repelling crops which do not then have to be sprayed with insecticide. One example of this has been genetically modified cotton in India which has increased yields by 60%, as it has made the crop unattractive to bollworm.

Crop plants have been improved by selective breeding for many thousands of years with progress speeding up in the period since the end of World War II. Crop yields have treb-

So, the big question is whether genetic engineering of plants is good or bad. Many of us think that this advance in science, developed during the past fifteen or twenty years by global agrochemical manufacturers, will be necessary to ensure that sufficient food is grown for the increasing num-

bers of humans in the world. However, we wish that it was being developed by University departments, or by Government backed research farms, rather than multi-national commercial firms who seek to profit

Bryan and Alison Edgley started farming Kensham Farm at Cadmore End in 1955. Their son, Charlie Edgley, now manages the arable crops for the family partnership—around 2,300 acres, mainly of milling wheat, centred on Kensham Farm but including rented fields between West Wycombe, Sands, Booker, Fingest and Lane End.
www.kenshamfarms-horseriding.co.uk/

Safety and Security

with PC 2272 Danny O'Driscoll

To contact your neighbourhood police team, dial 101 then ask to be put through to the Lane End team. 101 is the new police non-emergency number.

Anti-Social Behaviour (ASB)

We are reminding parents to talk about the safety of going into unused buildings and warehouses. There have also been a few incidents of eggs being thrown at properties in Lane End. If parents are noticing eggs going missing from fridges etc please question those in your care. If we catch anyone with eggs on them and they have no justifiable reason we will take action as it could cause criminal damage.

Offenders brought to justice

Four males in Stokenchurch have been charged with ABH

One female in Stokenchurch was charged with shoplifting

Neighbourhood priorities

PARKING:

We are asking motorists not to park on the pavement by the duck pond in the High street Lane end. This has been continuing and we will be issuing £30 fines for obstruction.

SPEEDING:

As a Neighbourhood team we have

been doing more speeding and ANPR operations in Lane End and Wheeler end.

ANPR is a powerful tool that can help prevent crime by identifying flagged vehicles. ANPR identifies suspect vehicles that may not normally attract police attention, along with unlicensed or uninsured vehicles. These can be seized on the spot by ANPR equipped officers.

It can be used to gather intelligence on known criminals and for running pro-active operations using police intercept teams.

ANPR cameras are not safety cameras - they are not used by Thames Valley Police to catch speeding or otherwise law abiding motorists. ANPR cameras are not used to generate money for the Government or other agencies.

Partnership Activity

The team would like to increase the number of neighbourhood watch schemes across the area. If you would be interested in working together with the team, Wycombe district council and neighbourhood watch in starting up a scheme in your area please contact us.

Log on to www.police.uk, type in your postcode and then click on 'Find out more'.

WHITLER CONSTRUCTION LTD

*ESTABLISHED FOR OVER 35 YEARS, WE PRIDE OURSELVES
ON HIGH QUALITY WORK AND A RELIABLE SERVICE*

**FROM YOUR INITIAL IDEA WE CAN GIVE
YOU YOUR COMPLETE DREAM**



- EXTENSIONS
- NEW KITCHENS
- BATHROOMS
- HOUSE ALTERATIONS
- GENERAL MAINTENANCE
OR REPAIRS

FOR MORE INFORMATION AND ADVICE CONTACT

CHRIS BUTLER ON 07971 487 324

7 ORCHARD ROW, BOLTER END LANE, WHEELER END, BUCKS HP14 3ND
TEL: 01494 882852 FAX: 01494 883032 Email. wconstruct@hotmail.com

Elim Christian Centre

Report by Pastor Nick



Over **Christmas** I'm delighted to report that we partnered successfully with the other churches in Lane End to deliver Christmas boxes to

local families, and to buy a book for each child in the nursery at Lane End Primary as a Christmas gift.

We had 165 people attending our Carol Service on 18 December. The carols were led by a traditional brass band and we retold the nativity story using chocolate!

We look forward this year to inviting the village out to enjoy **God In The Car Park 2012** with us again, this time on Sat 26 May outside church.

Our **Sunday Services** are from 10.30am, and they are relaxed and welcoming – do join us! Come casually dressed, enjoy worshipping with our live band and expect relevant biblical messages from God that are really useful to your life.

We have a team of CRB-cleared children's workers to help you look after your primary-aged children during the time we have our message, and we also have a lively youth group.

'Like' us on **Facebook**— *Elim Christian Centre Lane End* – and be part of our community on-line.

Follow us on **Twitter** @elimlaneend

If you have needs that you think the church could help you meet, email me at nwhittome@gmail.com

I'd love to hear from you!



Lane End Oasis

(c/o Elim Christian Centre, Lane End)

FREE informal training for ages 16+
on

Car Mechanics, Welding
Plumbing, Painting & Decorating
Gardening & Landscaping

Literacy, Numeracy
Housekeeping

IT for Beginners, IT Advanced, IT Animation

Our objective is to help people find employment and progress towards qualifications. Courses are 2 hours per week for 14 weeks held during the day or evenings.

For more information call: 01494 881112

New Bridleways on Cadmore End Common Report by Katy Dunn

Walkers and horse riders are often at odds as horses churn up footpaths, making them muddy and difficult to walk on. Horse riders are meant to stick to bridleways on common land, but some cannot resist the temptation to stray onto footpaths and policing is impossible.

Kensham Farms, which owns Cadmore End Common hopes it has come up with a solution. It is creating two new permissive bridleways from Holland Bank towards Flint Cottage (following the line of electricity cables) and another from the

track between Prospect Place and Saddlers Cottage following the line of the south footpath along to Bolter End Lane opposite The Dovecote. Contact Kensham Farms kenshamfarms@btconnect.com / 881373 for route info.

Walkers are welcome to use the new bridleways, which have been made wide enough that if one side should get muddy, walkers can walk on the other. Also, an alternative dry route for walkers on South Footpath has been opened up running closer to Boundary pond. Cadmore End Common is Open Access Land, meaning walkers can wander where they like, but horses must stick to the bridleways and absolutely no motorbikes are permitted.

The Window Doctor

**CARE & REPAIR FOR ALL YOUR
UPVC & ALUMINIUM WINDOW
& DOOR PROBLEMS**

- Replacement of broken down sealed units
- misting up inside glass
- Adjust front & back doors that do not shut
- New handles, hinges and door locks
- Replacement of patio door wheels
- New security handles with keys
- New door panels and cat flaps
- New Georgian style or leaded style sealed units
- All insurance work • Burglary damage • Servicing



PLUS INSTALLATIONS OF NEW UPVC WINDOWS & DOORS



Call us for a FREE Survey and Quotation,

No call out charge



Friendly Family Established Business
Cowling & Co.

**Mobile: 07860 435742
Tel/Fax: 01494 483567**

email: [windowdoctor@jcowling.plus.com](mailto>windowdoctor@jcowling.plus.com)

www.windowdoctor.co.uk

Volunteer!

Lane End Youth & Community Centre

LEYCC is a registered charity, entirely self-funded through private hire and fund-raising by volunteers. If you want to get more involved with your local community then why not volunteer to join our enthusiastic and energetic Management Committee? There are several vacancies available, please call 01494 883878 or 07932 326046 for more details.

Lane End Youth Club

Lane End Youth Club is looking for volunteers to help with its youth clubs on Wednesday and Friday evenings. This could be anything from making refreshments to assisting the Youth Worker and actively engaging with the youngsters. Whatever our age, we all have useful skills to pass on. Please contact: mandydunning@btinternet.com

Conservation Work

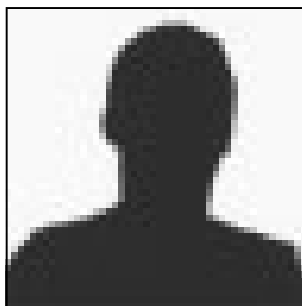
This could include anything from litter picking to laying a footpath. You get hot and sweaty and often muddy, but it's such fun and you can learn some useful new skills. It's very sociable and extremely satisfying to see what a difference you've made. The Lane End Conservation Group meets monthly on the first Saturday of the

month. Contact Robert Briggs on 882090 / rbbrigg@aol.com

Lane End Parish Council

Lane End Parish Council could do with some help with managing specific projects. If there's any cause you'd like to champion, a particular issue you'd like the parish council to take forward with your help, or could just lend a hand to the community where needed, please contact the parish clerk on 437111.

Volunteer of the month:




Could this be you?


Your community needs your help. Volunteer where you can and make new friends, feel the satisfaction of doing a good thing, and learn new skills which might help you in your workplace.

Ask the: plumber

with Bill Blake 



Question  What do a non-working hot bath tap, a toilet fill valve not closing and strange-tasting water all have in common?

Answer  Each one of these problems has come up over the last few weeks and each one has a common cause.

The hot tap problem was insulation material that had found its way through the hot water pipes and lodged below the tap head, blocking it completely. The toilet fill valve failed to shut off because a piece of wasp carapace had lodged under the valve washer preventing it from closing.

These problems and many more are all caused by debris falling into the cold water storage tank in the loft. Insulation, insects, old ironwork, rotten timber – all these and many more things are found in tanks without lids. Please put a lid on your tank and make sure it's insulated.

Oh – and the strange tasting water? Well that was two dead mice floating in the tank of a local resident. The householder said “yes, the water did taste a bit funny when I was brushing my teeth...”.

Bill Blake

**Your reliable and trustworthy
'house trained' local plumber**

**Happy to take on all your household
plumbing jobs from mending a dripping tap to
installing your new bathroom**

Phone: 07762 807767

Based in Wheeler End

NO VAT, NO CALL-OUT CHARGE



Raymond Good (Joiners) LTD

Myze Farm, Oxford Road, West Wycombe
HIGH WYCOMBE. HP14 3BA

Staircases, Windows, Doors & Conservatories

Any Bespoke Joinery Undertaken - Designed, Manufactured and Installed

Replacement PVCu Windows, Doors & Conservatories

Construction Works also Undertaken – Renovations, Extensions etc.

For more information call us on

TEL: 01494 881789 FAX: 01494 880789

email: sales@raymondgood.co.uk

Or visit our Website **www.raymondgood.co.uk**

Reg. in England No. 730437



Vat Reg. No. 194 2666 35

Neil Harris Picture Framing

Quality family business established 30 years

Large selection of mouldings and mounts

WE FRAME ANYTHING

We are also highly recommended for our cleaning and restoration of oils, water colours, and gilded frames

Watercroft Farm, Nr.Wheeler End
(road down beside Brickmakers Arms)

Open weekdays 11-5.30 Saturday 9-12

Tel: 01494 881527

Gardening

with Dave Dunbar 



Boost your bulbs for next year

Seasonal Top Tips:

A general rule of thumb for daffodils, or if you like Narcissus: leave for six weeks after flowering before cutting them down to the ground, this allows time for the food produced in the leaves to be slowly moved down to the bulb and stored ready for next year's flowers. Another tip is after the flowers have gone over, snap the dead heads off. This saves food from being sent to make seeds which instead gets sent to the bulb, and the stronger the bulb, the better the flowers.

This is a good time of year for planting anything new, and for increasing stocks of herbaceous plants. Large bunches can be lifted and split up, increasing stock to be planted elsewhere around the garden. It's also a good idea to do this if plants have outgrown their living space. Dig up one big bunch, split it up and replant with three little bunches. It'll be rejuvenated.

How about feeding? Most of the time we're cutting plants back and raking up leaves and taking away all

the natural food for plants that would usually re-cycle back into the soil. There are fast acting fertilisers like bone meal, fish blood and bone; spread these around borders including shrubs and trees. Slow release ones like Growmore, are granular fertilisers for easy distribution.

Finally, as I always say, if you feed your lawn too early in Spring it will grow quicker than you can cut it. It naturally grows like mad in the first couple of weeks of warm weather and when it's calmed down, then feed it!

Favourites:

The Christmas Rose, otherwise known as Hellebore, is a pretty little plant, and unlike its name suggests, mostly flowers from January to March or even April. In many gardens the green flowering form is widely seen but the modern hybrids are more brightly coloured in shades of white, pink, red and purple. They mostly keep their leaves during the winter and grow about 1ft high with flowers, and when they produce new leaves it's a good time

to cut off the older, sad looking ones. They have a woodland feel and are good in partial shade.

Check out these purple ones planted next to dwarf yellow Narcissus!



Dave's Mystery Plant:

I am an upright growing shrub usually growing to a height of 6-8ft. I do have nice flowers, similar to those of Lily of the Valley, but more weeping.

I give a good display of white flowers, but I am probably more popular for my fabulous display of red narrow shaped new leaves like flames which I grow each Spring. I am slow growing and love acid soil, in fact if it isn't acid I will sit in a border and hardly grow at all!

What's my name?

Answer: Pieris

ORNAMENTAL LANDSCAPES

~Former Royal Horticulturalist~

Is available for

**Garden Design, Build,
& Maintenance Projects**

Dave Dunbar

(National Diploma in Amenity Horticulture)

Large or small jobs undertaken including.....

Patios, Walls, Paths, Decking, Turfing, Planting, Hedge Cutting &

Fencing, Ponds & Waterfeatures, Pruning & Tree Surgery,

Re-vamping unsightly borders, etc.

Please view our photos on our website

www.ornamental-landscapes.co.uk

01494-883846 or 07833-684065



Lane End local history quiz

- 1/ Which member of royalty rode his horse on one of Lane End's Commons (*see pic above, and if anyone can identify which common it was, please let me know! Ed*)
- 2/ What year was the Wesleyan chapel built?
- 3/ Name two sports the gents of Lane End excelled in?
- 4/ What happened to the telephone exchange in 1944?
- 5/ What was Cowasjee Jehangier hall later called?
- 6/ When was Widdenton Park reservoir built?
- 7/ What is the name of the 'lost' village between Lane End and Frieth?
- 8/ The son of which legendary poet and story teller was a squire in the 'lost village' in 1429?

Answers on the parish council website:

laneendparishcouncil.org.uk

Bus times



HW to Lane End Monday to Friday	340	340	340	340	340	31
High Wycombe	10.15 (and at 15 past until ...)	14.15	16.05	17.10	18.15	22.10
Lane End, Simmons Way	10.29	14.30	16.23	17.28	18.29	22.49
Lane End, High Street	10.31	-	16.25	17.30	18.30	-
Bolter End, Peacock	10.32	-	16.26	17.31	18.31	-
Cadmore End	10.34	-	16.28	17.33	18.32	-

Lane End to High Wycombe Saturday	340	340	340	340	340	31
High Wycombe	9.15 (and at 15 past until 13.15)	14.35	15.35	16.45	17.45	22.10
Lane End, Simmons Way	9.29	14.49	15.49	16.59	17.59	22.49
Lane End, High Street	9.31	14.51	15.51	17.01	18.01	-
Bolter End, Peacock	9.32	14.52	15.52	17.02	18.02	-
Cadmore End	9.34	14.54	15.54	17.04	18.04	-

Lane End to High Wycombe Sunday	340	340	340
High Wycombe	13.50	15.25	17.25
Lane End, Simmons Way	14.04	15.39	17.39
Lane End, Village Hall	14.06	15.41	17.41
Bolter End, Peacock	14.08	15.43	17.43
Cadmore End	14.10	15.45	17.45

High Wycombe to Lane End Sunday	340	340
Cadmore End	10.19	12.19
Bolter End, Peacock	10.21	12.21
Lane End, Village Hall	10.23	12.23
Lane End, Simmons Way	10.25	12.25
High Wycombe	10.40	12.40

High Wycombe to Lane End Monday to Friday	340	340	340	340	340
Cadmore End	7.26	9.05	9.58	10.48 (and at 48 til 13.48)	16.42
Bolter End, Peacock	7.28	9.07	10.00	10.50	16.44
Lane End, Village Hall	7.29	9.08	10.01	10.51	16.45
Lane End, Simmons Way	7.30	9.10	10.03	10.53	16.46
High Wycombe	7.49	9.29	10.20	11.10	17.03

High Wycombe to Lane End Saturday	340	340	340	340	
Cadmore End	9.48 (and at 48 until 13.48)	15.06	16.10	17.10	
Bolter End, Peacock	9.50	15.08	16.12	17.12	
Lane End, Village Hall	9.51	15.09	16.13	17.13	
Lane End, Simmons Way	9.53	15.11	16.15	17.15	
High Wycombe	10.10	15.27	16.31	17.31	

High Wycombe to Lane End to HW Monday to Friday	2C via Cressex first	2A via Stoknch first	2A via Stoknch first	2A via Stoknch first	2A via Stoknch first	2C via Cressex first
High Wycombe	7.10	7.21	9.00 (and on the hour til 16.00)	17.10	17.35	9.30 (and at half past til 16.30)
Cadmore End	-	7.48	9.27	17.38	18.04	-
Lane End, Simmons Way	7.29	7.49	9.31	17.42	18.08	9.50
Lane End The Row	7.31	7.51	9.33	17.44	18.10	9.52
Cadmore End	7.35	-	-	-	-	9.56
High Wycombe	8.15	8.15	9.53	18.06	18.30	10.21



B&T Supermarket

Your friendly local store

Choice of Groceries, Fresh Fruit & Vegetables,
Dairy Produce, Wines, Spirits, Lagers and Beers

Dry Cleaning

Carpet Cleaner for Hire

Paypoint Terminal, Re-charge Electric Keys & Gas Cards,
TV Licence, Rent and Council Tax,
Mobile phone Top-ups, Photocopying

IN-STORE LINK CASH MACHINE

*Check for regular
special offers!*

Fresh crusty bread
baked daily



Edmonds Shopping Centre
Edmonds Road, off Archers Way
(next to Elim Centre)
Tel: 01494 882346

The Clarion is the Parish of Lane End's non profit-making magazine, for the sharing of information about Parish activities. Neither the Editor nor the Parish Council, whilst sponsoring the magazine, takes responsibility for the statements and/or views expressed herein.

We welcome news or diary dates from community organisations and letters from individuals. The next copy deadline is 1 May and the next issue will be out at the beginning of June.

Send copy to katyjdunn@btinternet.com

Or call Katy on 01494 883883 for more info

Scannappeal 25th anniversary



This year marks Scannappeal's 25th anniversary and, currently, every 10 minutes a patient is diagnosed or treated with equipment supplied to Amersham, Wycombe and Stoke Mandeville hospitals.

Mark Scannappeal's special year in 2012 and help the charity provide valuable equipment for our patients.

info.scannappeal@buckshealthcare.nhs

scannappeal.org.uk

Fancy learning scuba diving?

High Wycombe Sub-aqua club is looking for new members.

You can have a go and see if you like it by going along to Wycombe Leisure Centre on a Thursday evening. Full Scuba kit and a trained instructor are provided.

The try-diver will spend up to an hour underwater using full scuba equipment and experience the feeling of weightlessness and being able to see and breathe underwater. A payment of £20 goes to the club to help maintain and renew club equipment, hire the pool etc.

Call Len 07867 544 738

Website: wycombesubaqua.com

Useful Telephone Numbers...

Parish Clerk—Hayley Glasgow	01494 437111
Lane End Surgery	01494 881209
Lane End Pharmacy	01494 880774
NHS Direct	0845 46 47
Lane End C of E Church	01494 881913
Lane End Primary School	01494 881169
Lane End Village pre-school	07703 926196
Lane End Village Hall	01494 881913 / 881298
Frieth Village Hall	01494 881176
Lane End Youth & Community Centre	01494 883878 / 07932 326046
Elim Christian Centre	01494 882587
Lane End Oasis Centre	01494 881112
Cadmore End Village Hall	01494 881623
Cadmore End C of E Church	01494 881913
Cadmore End Primary School	01494 881460
Bucks County Council	01296 395000
Wycombe District Council	01494 461000
Highways On Call	0845 2302 882
Flytipping	0845 330 156
Police—non emergency	0845 8505 505
Wycombe General Hospital	01494 526161

THE DESIGN WORKS

Graphic Design | Print Design | Web Design

We're based in Wheeler End and with over 20 years' experience we have the expertise to promote your business. We'll deliver on-time and on-budget and whether it's a new corporate identity, a website or a promotional flyer we'll produce designs that are creative, practical and stand out from the crowd, all at highly competitive rates.

Starting a new business?

Take a look at our website to see ideas for getting your new venture off to a flying start.

Call Steve Smith for an informal chat on **01494 883788**

designworks.ss@gmail.com

www.dsworks.co.uk

*****STEEL STOCKISTS, WELDERS AND FABRICATORS*****

R.S.J.'s IN STOCK

E.&R.MEAKES LTD.

BLACKSMITHS AND AGRICULTURAL
ENGINEERS

MOBILE CRANE HIRE

CUTTING AND MOBILE WELDING

FORGE WORKS, LANE END, HIGH WYCOMBE

Telephone: High Wycombe 881262

**** Ornamental Ironwork * Ironmongery and Tools ****

**** Garden Tools and Sundries * Fencing Materials ****

**** Paints and Decorating Materials ****

THE TREE HOTEL

AT CADMORE END



Marlow Road,
Cadmore End,
High Wycombe,
Bucks.
HP14 3PF

T: +44 (0) 1494 881183
F: +44 (0) 1494 882269
E: cadmore@treehotel.co.uk



Eco Tiffin Take-Away!



Step 1 Simply buy your Tiffin from us at a one off cost. It comes filled with your choice of either a vegetarian or non-vegetarian option.

Step 2 Come back and have your Tiffin re-filled with further tempting curries at a reasonable cost.

Vegetarian Tiffin meal from £7.95
Non-Vegetarian Tiffin meal from £9.95



THE TIFFIN

Bring the delicious
taste of The Tree
Hotel at Cadmore
End to your
home or office.



Foodies Music Venue

J
A
Z
Z



Our monthly jazz nights have been so well-received that we are enjoying our growing reputation as 'the Foodie's Music Venue' in Bucks. Starting in January, enjoy our mouth-watering menu with **Live Music** from nationally renowned musicians.

ROCK N ROLL

Monthly Music Diary

1st Friday ~

Rock & Roll with the JJS

3rd Wednesday ~

Jazz with Lynn Garner & Friends

Last Friday ~

Jazz with Tim Dawes & Friends