

the Clarion



Your official Parish Magazine with news, views,
events and real-life stories from Bolter End,
Cadmore End, Lane End, Moor End and Wheeler End

**THIS IS OUR
VILLAGE
NOT A
MOTORWAY**



**LANE END SPEED
AWARENESS WEEK**
11-17TH MARCH

APT HEATING SERVICES

*Thinking of having a new
Natural Gas Boiler or full
system installation in 2012?*



ideal



209175

Local Sevicees Offered:

- Full gas central heating installations.
- Natural Gas Boilers.
- Warm Air Units upgraded or removed.
- Radiators added and systems updated or removed.
- Boilers replaced and your options explained in laymans terms.
- Fast, friendly service.
- Full references from satisfied customers available on request.
- Best prices, service and reliability from a mature, local tradesman.

Please call us on:

07941 286747

for a free quotation.

From the Editor

Last issue's letter from a Clarion reader about speeding in the village has prompted an amazing response. Lane End Speed Awareness Week (11-17 March) is the first action to come out of a collaborative effort between The Clarion, Lane End Parish Council and our neighbourhood policing team. Do download the poster on the front from the parish council website: www.laneendparishcouncil.org.uk or email me katyjdunn@btinternet.com for a copy and display it where you can during Lane End Speed Awareness Week to support the effort. Go to p20 for more information.

The previous issue also saw a request from Janet Collins for information about Lane End's Temperance Hotel. Thanks to all who got in touch, as Janet has kindly written an article for us (p14) about the origins of the building. It's an interesting read!

Do get in touch if you'd like The Clarion to look into any aspect of life in our villages, or send in any reports of your own that would be of interest to our community. Happy spring!

Katy (Editor) katyjdunn@btinternet.com

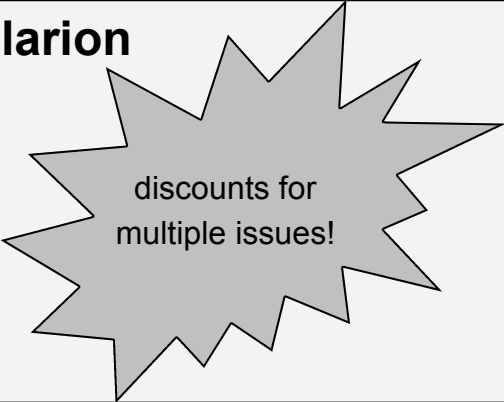
01494 883883

Advertise in the Clarion

Connect with your local
community, reach 1700
readers in their homes

£50 half page per issue

£85 full page per issue



discounts for
multiple issues!

Welcome to everything you need in an English country pub



***Gastro Pub
of the Year
Award Winner***

***Recommended on
TripAdvisor***

01494 88 22 99

www.grouseandale.com

- *from light lunches to full 3-course meals*
- *Cask Marque accredited real ales*
- *extensive selection of wines – 20 by the glass*
- *function room and private dining area for parties of up to 50 dining or 80 buffet*
- *courtyard dining and drinking*
- *wi-fi internet throughout*

Grouse & Ale, High Street, Lane End, HP14 3JG

Your Parish Council



laneendparishcouncil.org.uk

Parish Clerk ♦ **Hayley Glasgow**

Tel: 01494 437111

clerk@laneendparishcouncil.org.uk

74 New Road

Sands

High Wycombe

Bucks HP12 4LG

~Councillors~

Chairman: Cllr Michael Detsiny

Vice Chairman:

Cllr Graeme Coulter

Cllr Mandy Dunning

Cllr Jane Osborn

Cllr Allan Simmons

Cllr Lorraine Smith

Cllr Keith Wright

Cllr Callum Stewart

Cllr Nigel King

Cllr Mandy Sarney

Parish Council meetings

We would love to see you at the meetings! Parish Councils meetings are open to the public and there is always a session at the beginning of each meeting where you can air your views or raise concerns/ comments. Our next few meeting dates are -

Monday 4th March – Sycamore Room, Lane End Village Hall

Monday 8th April – Cadmore End Village Hall

Annual Parish Meeting – Monday 29th April – Lane End Youth and Community Centre

May - Wednesday 8th May – **Annual Meeting of the Parish Council** and normal meeting – Sycamore Room, Lane End Village Hall

YOUR PARISH COUNCIL NEEDS YOU!

IF YOU WANT TO KEEP OUR VILLAGE A GOOD, SAFE PLACE TO LIVE THEN PLEASE VOLUNTEER TO BE A MEMBER OF LANE END PARISH COUNCIL.

We meet at 7.30pm on the first Monday each month to discuss and agree local issues. Please send a written application to Hayley Glasgow the Parish Clerk to be consid-

ered by the Parish Council to be a member.

As this is a voluntary role we need people with vision, energy and a little extra time on their hands.

T & L Development

With regard to the care home proposal at 24-26 The Row, Lane End Parish Council welcomes the proposal to redevelop the T&L Site and, in principle, is strongly supportive of the Planning Application that has been made.

The Application was given due consideration at the Parish Council Meeting held on 7 January 2013 and members of the public were given a full opportunity to put forward any comments or concerns that they had. The Parish sent a considered response to WDC planning department which highlighted the concerns and comments raised at the meeting. The full response submitted can be read in the minutes of 7 January 2013 (on the Lane End Parish Council website: laneendparishcouncil.org.uk) or on the WDC website under planning.

Lane End Playing Fields

You may have already seen the work been taking place at the Lane End Playing Fields. The Parish Council has commissioned a lot of tree and hedge work surrounding the

field. The play equipment which could no longer be used has been removed.

There is a working group which are constantly looking at ways to improve the area. If you have any ideas to help, please contact The Parish Council to get involved. The Parish Council would like to try and tap into some funding that may be available in the way of grants or donations. Perhaps you know of some funding available to help pay for improvements to the playing fields? If you do please contact the Parish Clerk.

Burglaries

Police in Wycombe are advising homeowners to be vigilant following an increase in burglaries across the district where cars and car keys have been stolen.

Thieves have broken into properties in roads including, Springfield Road in Stokenchurch, Brunel Road in Downley, Rose Avenue in Hazlemere, Pound Lane in Marlow and Redman Road in Booker.

In most instances the burglars have managed to get access to the property **by a UVPC door that has not been double-locked.**

These burglars are targeting expensive cars, most of which cannot be stolen without keys. Below are some

crime prevention tips to help keep your property secure:

1. Double lock your front door with a key (even when you are in the house). It is not sufficient to simply lift the handle
2. Never leave your keys;
 - in locks
 - on a window ledge
 - on the kitchen table
 - on a hook behind the door
3. Keep your keys safe and away from the front door, but easily accessible in case of a fire, and make sure your keys are always in the same place at night-time.

The Parish Council is your first point of call for any issues that concern you to do with Lane End, Cadmore End, Wheeler End, Bolter End and Moor End.

We are here to help.

**Contact your Parish Clerk
Hayley Glasgow on:**

**01494 437111 or
clerk@laneendparishcouncil.org**

**Keeping up to date with Lane End Parish Council is easy!
Visit the website for the latest planning applications, news and events**

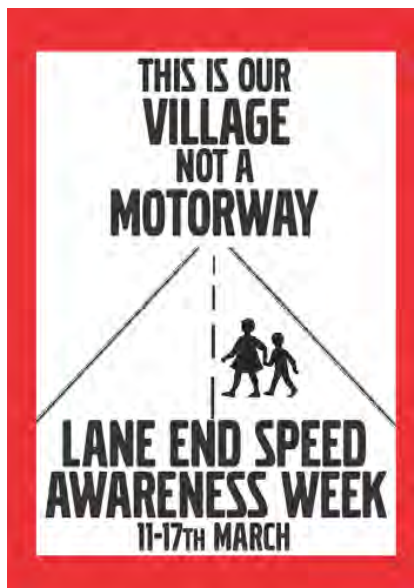
laneendparishcouncil.org.uk

or check out one of three noticeboards located in the villages. Locations are outside the village hall, Finings Road, near the shops at Edmonds Parade and near the village hall in Cadmore End.

Don't forget you can always contact the Parish Clerk on

01494 437111 or

clerk@laneendparishcouncil.org.uk.



The lowdown

Royal British Legion

Report by Peter Jennings



The Royal British Legion Lane End is holding a new event on 23rd March in the Village Hall. The 40's THEMED DANCE

and MUSIC evening will have a live band and, no doubt, some well known war-time songs to sing and dance to. Appropriate food will be served. Please keep an eye on the local noticeboards in the village and shops for more details or contact Tom Nixey 881436 or Bruce James 881079.

Footpath Update

Report by Margaret Adnitt

The rain outside my window is torrential and the footpaths have returned to the very soggy and muddy condition we experienced so much last year. Just two days ago (at the end of January) the ground was hard and crisp and the countryside looked very beautiful under a good covering of snow.



Walking over the fields and commons in the deep snow was a delight, tiring but not dangerous. However, the ice and compacted snow on footpaths and car parks around the village made surfaces very hazardous and there were many falls. A friend told me of WinterTrax – a unique coil design fitting over the soles of one's boots or shoes giving the solid grip accustomed to feeling on dry ground.

WinterTrax are not expensive but are a real boon on icy surfaces and especially for the older pedestrian. They are available from Notcutts Garden Centre and, although they will probably not be necessary after this publication in March, I will remind readers in the Autumn of their use for next Winter.

Meanwhile enjoy your Spring walking and don't hesitate to contact me should there be any footpath problems. Call me on 882609 or email margaret.adnitt@gmail.com.

Lane End Fete

Report by B R Nix

The village fete will be back on Saturday 8th June this year.

The fete is well known as an opportunity to get together as a community and raise Monies for the various stall holders and village hall as well as giving villagers a chance to socialise on the day.

Having missed a year in 2012 the fete will return on June the 8th 2013, we hope bigger and better than ever with all the old familiar attractions and a few extras as well.

All the funds raised by the fete are used to help with the upkeep and maintenance of the village hall which plays such a vital role in the heart of village life.

We will try to produce a fete to be proud of for the community this year and with your help it will be much easier to do.

If you want to help please contact myself on the contact details below. I offer my sincere thanks in advance for any help you can give.

Bob Nix Tel: 01494 881000

nix682@btinternet.com
Butleigh, Ditchfield Common, Lane End, HP14 3HJ

On behalf of:
Lane End Village Hall Committee

Now offering
**FREE Forest
School Sessions**



Sunshine

MONTESSORI NURSERY

@ The Old Village School, Bullocks Farm Lane, Wheeler End, HP14 3NH

- Full day care nursery
- Open 51 weeks/year 8am to 5.45pm
- Babies (3 months) to 5 year olds
- Spacious, bright, rural aspect
- Holiday childcare available
- FREE 15 hours per week for 3 & 4 year olds

www.sunshinemontessori.com

Phone: 01494 880607



ASPECT CARPENTRY



RELIABLE AND PROFESSIONAL SERVICE

City and Guilds
Qualified

Established 9 years
Serving the local Community

Internal / External Doors
New Windows fitted
Kitchen and Bedrooms
Solid wood and laminate Floors
Staircase Refurbishment

FREE ESTIMATES and COMPETITIVE PRICES

FULLY INSURED, ALL WORK GUARANTEED

Call Duncan Frost on: 01494 880540—07811 596 304

Email: aspectdf@aol.com

Lane End Conservation Group

Report by Jane Osborn

Despite last year's wet weather, not one Action Day was cancelled! The turnout for the January 2013 was very good and we managed to clear back the steps down from the Wheeler End bridge over the motorway to the Four Fields footpath, in the hope that no further work there will be required for at least a year. One of our group even finally swept the steps clear of the last remnants of mud and grass etc.

After the formal part of the 2012 AGM of the Group, those present were asked to think about the future of the Group, which has been in existence since 1983. We focused on the fact that membership of the Group is getting older and we are having difficulty recruiting new/younger members. Currently, we are looking at ways of broadening what we do and when we do it., but additional ideas would be most welcome. If any Clarion readers have thoughts on how we can make the Group more relevant and interesting to younger members of the Parish, we would be delighted to hear your ideas. Please contact either the Chairman (Robert Briggs -

rbbrigg@aol.com), Treasurer/ Membership Secretary (Margaret Adnitt - margaret.adnitt@gmail.com) or Hon. Sec. (Jane Osborn - jane.osborn@virgin.net).

Lane End Surgery update

Report by Ian Barnes

We would like to thank everyone for their patience during our modernisation of the surgery. Over the past few months we have carpeted the waiting room, hallways and stairs, re-wired the building, installed new windows, blinds and lighting.

At the time of writing we are awaiting the installation of a new automatic door at the front of the building to improve access for wheelchairs and buggies. We will also shortly be reconfiguring and redecorating the consulting rooms. This will enable us to begin providing family planning clinics in Lane End rather than asking patients to attend at Marlow.

We will be holding another patient meeting in late Spring / early Summer and will publicise details several weeks before the event.

🐾 Lane End Players

Report by Eve Berry

Our next production will be 'The Hound of the Baskervilles', by Laurie Howe. This brings the famous Sherlock Holmes story into the 21st century (influenced by the recent television updated series) but of course, still with Holmes and his faithful deputy, Dr Watson. You can be sure of a thrilling evening as the detectives try to solve the mystery of the Baskervilles.

Performance dates are May 17th, 18th, 24th and 25th. The box office opens on Saturday, 13th April and tickets can be bought from the Village Hall on Saturday mornings from 9-30am till 12 noon, by emailing boxoffice@laneendplayers.com or ringing 07706 426320.

Be sure to come along and enjoy the terror of the baying hound and watch as the mystery is unravelled!



🐾 Lane End Twinning Association

Report by Linden Porter

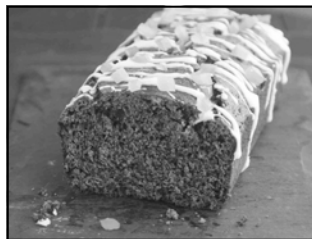
Gosh doesn't time fly! It only seems like yesterday that we were welcoming our six French guests for the Twinning Weekend and Craft Market back at the beginning of December.

Our guests were treated to an action packed weekend and the success of the Craft Market had them selling out of produce early in the day - which meant they could 'do Marlow' in the afternoon!

The Grouse and Ale laid on a splendid dinner on the Sunday evening, and I got the chance to practice my mediocre French - the less said about that the better.

Do come along our monthly Saturday morning Café (1st Saturday of every

month) and find out more about us. If nothing else the people are friendly and the fresh coffee and croissants are excellent. Sometimes we even have cake!!





Lane End Twinning Association

Uniting Lane End in Buckinghamshire, UK with Saint-Pierre d'Oleron in Charente-Maritime, France



A letter from Oleron...

The Marche de Noel in December was well attended by the locals, but the UK/Lane End stall was a bit thin this year. Shame, I wanted to buy some mince pies! It was good however to say Hi to the ladies who manned it (is that the right word?) and we were entertained by a troupe of beautiful stilt-walkers.



The very snowy weather which you have experienced in mid-January largely passed us by and while still a bit cool, things are starting to move again: the grass is growing and although the ground is very wet the local farmers have ploughed and harrowed and apparently started to plant something. Here the main

crops are maize (which grows to 8-9 feet high), sunflowers (to see a field of sunflowers is a lovely sight), salad crops, grapes, and some tobacco.

Being a few degrees warmer than the UK makes quite a difference. In my garden, the *pierre de charente* lies about 15 cm below the surface so I cannot grow root crops, except potatoes, but *haricot vert* and broad beans do well, as does fruit. My Cox's Pippin apple tree, which I brought from Swindon about eight years ago now produces a lot of lovely crisp and sweet apples each year. Along with figs, plums, damsons, pears and (in early June) cherries, and grapes. My varieties are *chasselat* (small sweet white grapes) and *merlot* (juicy black fruit) for the table, I couldn't compete with the local vintners.

So we look forward to another annual miracle, as the daffodils have already started to form flowers, and it will soon be Spring. We hope to see some of you from Lane End down here in the summer - it's only an hour from Stansted!

Tim Cherry

Lane End Youth and Community Centre

Report by Emma Savory

Spring has finally sprung and we are busy filling the diary, so make sure you get your birthday party booked in and watch this space for more details on fun events and news...

Zumba – Mel has moved her Zumba class to Monday evenings 7.30 – 8.30pm at LEYCC. Only £5 per class, or £4 per class if you buy a 10 session card. Come along for a wiggle and a giggle and shape up for summer!



Easter Playscheme - After the success of last summer's playscheme, we are holding a two day playscheme over the Easter break for children aged 4 – 12 yrs. The sessions are WEDNESDAY 3rd and 10th APRIL, 10am – 3pm. Children will need to bring a packed lunch and wear appropriate clothing for all the fun-packed activities.

Prices: £8 per day for 1 child, £12 per day for 2 siblings and £16 per day for 3 siblings.

As always, places are limited and in demand, so please contact Emma to reserve your child's place now.

Meat Raffle - LEYCC holds a Meat Raffle every two weeks at The Chequers Inn, Wheeler End. Tickets cost £1 per strip or 6 strips for £5, and the raffle is drawn at 3.30pm. So, if you fancy a wander and a pint, or if you are looking for somewhere for a spot of Sunday lunch, then come along to The Chequers and support your local Community Centre. All money raised from the raffle helps to fund Computers @ the Centre, a FREE facility offering friendly advice and support for all your computer needs, open every Thursday 11.30am-2pm at LEYCC. The next raffle will take place on Mother's Day; SUNDAY 10th MARCH, so why not bring your Mum along?

Bags2theFuture—We are taking part in the 'Bags2theFuture' scheme. Please recycle your unwanted second-hand clothing, bedding, curtains, soft toys, shoes, belts and handbags by filling your black sacks and leaving them outside the LEYCC gates by 9am on FRIDAY 10th MAY. Your help would be greatly appreciated.

Please add 'Lane End Youth & Community Centre' on Facebook, just ask to join the group and you will be first to find out about all the events.

Lane End Youth & Community Centre,
Edmonds Road, Lane End, HP14 3EJ
Tel: 01494 883878 / 07932 326046
Email: leycc@hotmail.co.uk
Charity Number: 1101360

Lane End and District Horticultural Society

Report by Trevor Perrin

A new year and the seed trays are being prepared for hopefully a drier and warmer year which will see our 122nd Annual Show take place on Saturday 10 August 2013 in Lane End Village Hall.

To keep this Society going forward, we have two major requirements:

We require additional committee members to further our case with new, younger ideas and schools of

thought applied to our established thinking. You will find our meetings very convivial.

Ideally we need more competitors in our Annual Show to remain viable. This show is one hundred per cent dependent on participating competitors for without you there can be no show. Please peruse the eleven sections of our Annual Show Schedule when it's published and distributed in July. You may find an item that interests you.

From everyone here in the Potting Shed, we wish you well and for a better gardening year.

JSJ ELECTRICAL SERVICES

Domestic, Industrial, Commercial Electrical Contractor for all your faults and improvements, over 30 years experience, trustworthy and reliable.

- **Showers**
- **Rewires / extra sockets**
- **New Installations**
- **Storage heaters**
- **Security lighting**
- **Consumer unit upgrades**
- **Emergency call out**



Call John on

01494 882544 (Home)

07909698899 (Mobile)

QUALITY SERVICE GUARANTEED

The Temperance Hotel, Lane End

by Janet Collins

Listening to the radio one day, there was a program about the Temperance Movement in Britain. I realised that the Temperance Hotel situated in the centre of the village must be linked to that Movement, a subject that I had not thought about before. This led me to think about this Hotel. Why was it built there and what was its history?

The hotel was built in 1899 for a devout Methodist, Richard Smith, who married Lizzie Avery from Wheeler End. They lived in the Mill House

attached to the Sawmills by the village pond (these buildings no longer exist) and brought up seven children. Lizzie Smith signed the “pledge” in allegiance to the Temperance Movement.

The Temperance Movement started in the late 18th Century and in Britain continued until the Second World War. Their initial aim was to encourage “moderation and restraint” in the drinking of alcohol. In Britain at that time, brewing beer was considered a necessity of life, providing a tradi-



View from of the junction of Finings Rd and Church Rd, Lane End, circa 1910. Photographer unknown (Copy by Ronald Goodearl). Present day photo opposite page.

tional and nutritious drink when drinking water from local wells could be unsafe.

Brewers in Britain were well respected and wealthy town citizens, often patrons of charities and public work as well as entering into politics. Many were Quakers such as the two main brewing families in High Wycombe, Lucas and Wheeler. Robert Wheeler quickly became Mayor of High Wycombe on arrival from London and Richard Lucas was a generous local benefactor.

However, there was concern amongst wealthy middle class employers in the early 1800s about the problem of drunkenness among their workers. The shift from mainly agricultural work to industrial work meant that workers were expected



to be alert, efficient and punctual. The previous accepted practice amongst agricultural workers of taking Mondays off – the so called

“Saint Monday” – to recover from their hangover was no longer acceptable!

The middle class was the main driving force for the Temperance Movement, recognising the need for an alternative to Pubs and Inns for people to meet, eat and stay.

By the 1830s the Movement had changed and was led by a group of working-class men under the leadership of Joseph Livesey. They considered all alcohol evil and its consumption immoral. The first National Temperance Movement was started in 1832 in Preston, Lancashire and called all present to sign a “pledge” of total abstinence and referred to themselves as “teetotallers”.

So how does this all link to Richard

Smith’s Temperance Hotel in Lane End? Mr Smith became a wealthy businessman providing much local employment and owning many buildings and houses in the village. In 1881 it is recorded that he was a “coffee house keeper” but it is not known where this

building was, it may well have been on the site of the hotel. The purpose of the Hotel was perhaps to provide

a → place where Lizzie Smith could entertain and socialise with her friends but perhaps more likely; it was a place where travelling salesmen, who would be visiting Mr Smith's Sawmills, could safely stay without the temptation of drink. Records show that in 1898 there were 37 prosecutions in High Wycombe for drunkenness but only 17 were local people, the rest were travellers.

Richard Smith died a comparatively young man aged 62 but he had shown benevolence in his life time towards the care of others in the provision of this Hotel in our village. He brought electricity into the village in

1902 for the Lane End Chapel and also was known to have been a fair employer taking his workers regularly into Wycombe.

The Hotel's function changed over the years and by the 1930s, the hotel's parlour had become a grocers shop and in the mid 1940's the upper part was let to a demob serviceman. Most recently, it has been a Chinese Restaurant.

It has been fascinating for me to look into this local history and I am greatly indebted to both local villagers and the family of Richard Smith for their great help in unravelling this story.

Neil Harris Picture Framing

Quality family business established 30 years
Large selection of mouldings and mounts

WE FRAME ANYTHING

We are also highly recommended for our cleaning and restoration of oils, water colours, and gilded frames

Watercroft Farm, Nr. Wheeler End
(road down beside Brickmakers Arms)

Open weekdays 11-5.30 Saturday 9-12

Tel: 01494 881527

Building Developments latest

by Katy Dunn

24-26 The Row (T&L Works)

The planning application for a care home on The Row has been lodged with WDC. The application involves demolition of existing buildings on the site with retained and refurbished office/warehouse accommodation, the erection of a 72 bed care home, new doctors surgery with consulting rooms, linking footpath, parking and landscaping.

The parish council is broadly supportive of the plans, but there is concern that too few car parking spaces have been provided in the plans. Residents are concerned that at busy periods the overspill will impact on the village, particularly in The Row where few residents have their own off-street parking.

Executives from care home providers, Gracewell Healthcare, attended January's parish council meeting to try to allay concerns. The plans have since been amended to include four more car park spaces, but the parish council has flagged their concerns up with the planning department. Check progress via the parish council website: laneendparishcouncil.co.uk and click on planning.

Former Elga Site

We now have a name! It's to be called Marbourne Chase. Ashill Developments has passed responsibility for the site to its housebuilding partners, Persimmon Homes who plan to build the scheme according to the original plans.

Construction of the properties will begin in spring when a marketing suite will also open in advance of the planned show home in the summer. It is possible to register interest in the site prior to the launch by visiting persimmonhomes.com and choosing 'Marbourne Chase' from the drop-down menu. Or call 01628 502800.

'Registering for updates and visiting the development as early as possible is highly recommended as it means buyers can secure their preferred property and location within the development. Reserving at this stage also means customers can choose from a range of fixtures and fittings such as kitchen units, flooring, tiles or accessories and personalise their home. The development is likely to take up to 18 months before all properties are complete.' says a Persimmon Homes spokesperson.

Hambleden Valley Gardening Club

Report by Janet Collins

Our final visit for 2012 was a guided tour of Harcourt Arboretum where we were able to enjoy the autumn colours after a pleasant lunch.

Our monthly talks have been well-attended and very diverse in their content. Our Christmas talk was presented by a local farmer and Christmas tree producer, Andrew Ingram. I think we were all amazed at the number and different varieties of tree that are available. We finished this entertaining evening with Christmas drinks and fare.

The first talk this year was our own Gardeners Question Time hosted by local professional gardener, Christine Banbury. Our many varied questions were answered with knowledge and enthusiasm. A most entertaining evening was had by all.

Please see the What's On page for a list of our events and remaining talks. Our plant sale on 27 April at Skirmett village hall is open to all and we do a very good range of tea and homemade cakes for sale.

New members are most welcome. Please call 01491 638690 or 01491 638691 for details.

Lane End Older Persons Action Group

Report by Jane Osborn

The Lane End OPAG - 50+ continues to meet at 2 pm at Lane End Youth & Community Centre, Edmonds Road, and many of our members arrive early to enjoy the excellent light lunch laid on by volunteers between noon and 1 pm. We normally have a speaker—and for 2013 have talks on such varied subjects as travels in Peru, keeping warm and well in winter, and Mike Dewey of SWOP (Save Wycombe's Old Photographs) will be giving another one of his interesting talks on an aspect of Wycombe based on old photographs.

So if you are over 50, have time to spare on the first Thursday of each month do come along and join us.

Lane End Evening WI

Report by Christine Jennings

Talks on SERV-motorcyclists, Pre-mature Babies and the role of a Magistrate, a Quiz, a tombola stall at the Village fête, a Ramble and a visit to Parmoor's Walled Garden project will ensure that our members have

plenty to keep them busy this Spring and early Summer.

Visitors/potential members are always welcome to join us on the last Monday of the month in the Sycamore Room at the Village Hall. Meetings start at 8pm.

 **Holy Trinity**
Pastoral Group
Report by Judy Taylor

A group of people from Holy Trinity Church would like to offer support to anyone in or around Lane End who, because of infirmity and/or loneliness

may be unable to meet up with others for companionship.

We come from various backgrounds in teaching, nursing and social care and come to listen and help, not preach. We are committed to the respect and confidentiality of anyone we visit and will arrange visits to fit in with their routines.

If you know of someone who you think may benefit from practical help or just a chat with people who care, please call Judy Taylor on 881655.



D.J. MACLEOD

FORESTRY, FENCING AND ESTATE CONTRACTORS

Supplier of quality seasoned firewood

Tree and hedge planting, surgery, felling, maintenance,
grass cutting and scrub clearance

All types of fencing and gates

Supplier of wood chippings

Telephone 01494 882901

Mobile 07850 724023

www.donlogs.com

Email: djmac@globalnet.co.uk

Cedar Cottage
Parmoor
Henley-on Thames RG9 6NN

Speeding in Lane End

by Katy Dunn

Did you read the letter in the last issue of The Clarion about one reader's concern about the speed at which drivers race through Lane End? It seems he was not alone. The Clarion received an unusually full postbag (email inbox!) of residents who agree that the traffic in Lane is too busy at rush hour and at other times too fast.

In response, The Clarion has got together with Thames Valley Police and Lane End Parish Council to discuss ways to tackle the problem, and not only talk about it, but ensure there is real action.

The working group has a plan of short- and long-term measures:

Short term:

1/ Lane End Speed Awareness Week—w/c 11 March 2013

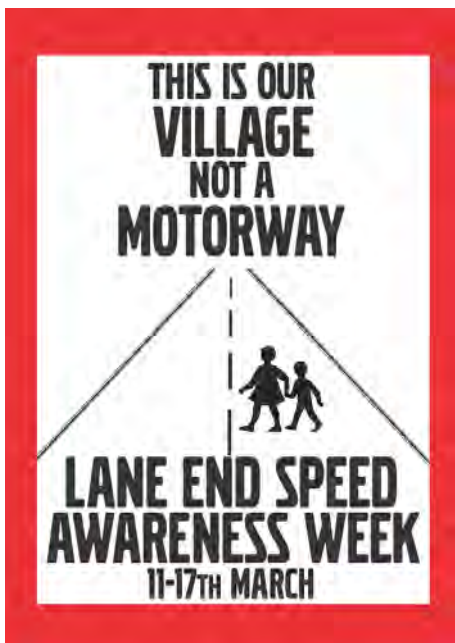
This is exactly what it says in the title. Most people are like us, ordinary folk with busy lives and not enough hours in the day to get everything done. We've all driven faster than we should through a populated area when we're on the school run, running late for work, or desperate to get home of an evening. We've done

it, not because we're bad people who deliberately flout the law or drive dangerously, but simply because we're thinking about other things.

Lane End Speed Awareness Week is about making the drivers who come through our village think about our community and what they're doing. It's about making them realise that Lane End (along with all the other areas of our parish) is a village, a community that happens to have a road through it. The road—their means of getting from A to B—is not the priority here.

The way to do this is to show we are all behind the Lane End Speed Awareness Week campaign. For that one week—11-17 March—we need to pepper the village with signs (see front cover and opposite). They are downloadable from the parish council website: www.laneendparishcouncil.org.uk, or email me for a printable pdf. Put it in your window, in your car, or blow it up in size and attach it to your gate, or make your own 'Lane End says Slow Down' signs for your garden and the grass verges of the village. We want the whole village to be rein-

forcing this message in as many places as possible for that one week. But after the week it's vital we take all the signs down—there's no sense in them hanging around looking more and more untidy as that gives the opposite message—that we don't care about our village. Taking all the signs down at the end of the week will also mean that if we do another Speed Awareness Week, it will have a good impact next time.



Lane End Parish Council has generously offered to pay for banners to be put up at the road entrances to the village and the police have committed to be in Lane End with their speed enforcement equipment every

Download this poster from laneendparishcouncil.org.uk and display it in your windows or garden. Or make your own sign for Lane End Speed Awareness Week

day during Lane End Speed Awareness Week.

The police make a good point in the letter they've included with this issue—if we all drive at 30 in the village, then the people behind us will be obliged to drive safely too.

2/ Community Speedwatch

Community Speedwatch is joint initiative between Bucks County Council and the police. Speedwatch needs volunteers to make a commitment to regularly monitor traffic speeds. The volunteers are trained and usually work in pairs, one using the detection device, the other noting down number plates. The police then send a letter to the registered keepers of the vehicles. Multiple transgressions can result in prosecution. If you are interested in becoming a Community Speedwatch volunteer, please contact the parish clerk, Hayley Glasgow on 01494 437111.

3/ Speed notification cameras

Lane End Parish Council is seriously considering purchasing speed notification cameras—the ones that flash up the speed that a vehicle is travelling as you approach it. The police consider these to be the most effective, as opposed to those that flash 'slow down' or '30'.

Ideally, the signs would be moveable, so that people don't get used to the notices being in the same place and start to disregard them as 'part of the furniture' of the village. Obviously this is a significant investment for the parish council and councillors are currently researching capital and

running costs to ensure that they are a viable investment.

Long term:

4/ Permanent traffic management measures

The working group would like to put a case to Bucks County Council for permanent traffic calming measures. These might include creating pinch points or 'chicanes' at the entrances to the village with a priority access system. This will have the advantage of slowing traffic down, but in the short term would possibly result in congestion in the village. There are also the issues of emergency and



Property Maintenance

New Bathrooms and Tiling Plumbing and General Household Repairs

New taps, Showers, Radiators. Can fix:



Blocked sinks

Leaks

Poor flushing toilets

Call Paul

Tel: 01494 482176 M: 07883 341496

Local Reliable Service

farm vehicles to consider with any road narrowing scheme.

There is also the possibility of asking to move the speed camera, and to de-classify the B482. This mean directional signage is removed and it's taken off maps for satnavs, meaning when the M40 was blocked, the traffic wouldn't automatically be re-routed through Lane End. A de-classified road wouldn't be a priority for gritting in winter, though, so there are pros and cons with every proposal. Rest assured, they will all be considered.

If you would like more information about traffic calming measures, the

possibilities open to us and their costs, I have documents from Bucks County Council that I can forward to you by email.

If you would like to volunteer for Community Speedwatch or get involved with the working group for Speed Awareness in Lane End, contact me: Katy Dunn katy-jdunn@btinternet.com or the parish clerk, Hayley Glasgow on clerk@laneendparishcouncil.org.uk.

Unless people step forward, things will never change. Let's make a start by displaying the poster to show our support for Lane End Speed Awareness Week.

Joe Griffin TV AERIAL SERVICES

- **Poor Reception Solved** - Aerials repaired & supplied
- **TVs** - Hung on your wall for you. Also supplied & tuned
- **Extra TV Points** - For aerial and Sky (In HD!)
- **Sky TV** - Also Foreign Language TV

Call Marlow 01628 439115

Your day by day
guide to local
meetings, clubs
and events



What's On?

To include your event or group meeting (free) email: katyduinn@btinternet.com
Please also be sure to inform me of any changes

Mondays

Regulars

Simply Walk—10am Meet Lane End Playing Field's car park. Walk and chat for 1-2 hours

LEOPAG (50+)—10.30-12.30am coffee pop-in Lane End Youth and Community Centre (LEYCC), Edmonds Road, Lane End. Tel: 883878

Dinky Dancers—10.30-11.15, Lane End Primary School Tel Sure Start 477110

VIPenioners lunch—12-3pm, two meals for the price of one at The Tree, Cadmore End

Gentle Exercise for over 60s—2-3pm LEYCC

Baby Welfare Clinic—2-4pm Lane End Village Hall

Lane End Parish Council Meeting—First Monday of the month, 7.30 in Lane End Village Hall, all welcome

Lane End Evening WI—Last Monday of the month at 8pm in the Sycamore Room, Village Hall

Zumba—7.30-8.30pm with Mel, LEYCC

Bridge Club—7.30pm Lane End Village Hall

Events

March

11-17 Lane End Speed Awareness Week

Tuesdays

Regulars

Bumps, Babies and Toddlers—10-11.45am, Holy Trinity Church, Lane End. Tel 883647

Parent & Toddler Group—9.30-11 Lane End Primary School. Tel Sure Start 447110

Tuesday Luncheon Club—11am-2pm Elim Centre. £5 Tel Maggie 881261

Zumba—7.30pm Lane End Village Hall Tel Cheryl 07812 180076

Slimming World—7.30-9pm, contact Michelle Spilsbury 07776 300276

Hambleden Valley Gardening Club—7.30pm, First Tuesday of the month, Skirmett Village Hall. Tel 01491 638690

Events

March

5th Talk on bulbs, rhizomes and tubers at Skirmett Village Hall 7.30pm. Tel 01491 638690

Wednesdays

Regulars

Music & Rhymes—9.30-10.15 Lane End Primary School. Tel Sure Start 447110

Lunch Bunch—parent and toddler group, 11.30am-1.30pm, Elim Centre, Tel 882587

JUMP—children's club, 3.45-5.30pm, Elim Centre Tel 882587

Bridge Club—2.30pm Lane End Village Hall

Junior Youth Club—for 8-12 years, 6.30-8.30pm LEYCC

School of Traditional Medieval Fencing—7.30pm Lane End Village Hall

Events

Thursdays

Regulars

Simply Walk—10am Lane End Playing Field's car park. Walk and chat for 1-2 hours

Coffee Stop—Village Hall 10-12noon. Coffee and chat. All welcome, run by Methodist Church

Physical Fun—9.30-10.30 Lane End Primary School. Tel Sure Start 447110

Computers@The Centre—11.30-2pm LEYCC

The Drop-In (Social lunch) - 12-2pm LEYCC

Four Ends Flower Club—Fourth Thursday of the month 2pm in Lane End Village Hall. Visitors £4.50. Flower arranging demonstration, raffle, tea and cake. Contact 883096

Circle Dancing—First Thursday of the month, 2pm Lane End Village Hall. Contact Mary Williams 01235 520608

LEOPAG—First Thursday of the month 2-4pm LEYCC

Methodist Church Wives group—2nd Thursday of the month 2-4pm LEYCC

Citizens Advice Bureau—12-3pm, Lane End Primary School. Tel 07717 652302

Line Dancing for Beginners. 7.30-9.30 Frieth Village Hall

Lane End Players—8pm Village Hall Tel 07706 426320

International Curry Night— 6-10pm at The Tree, Cadmore End, Tel 881183

Fridays

Regulars

Look at Me! —9.30-10.30, Lane End Primary School, Tel Sure Start 447110

FSFH Circuit Training—9.30-10.30am LEYCC

Live Jazz—last Friday of the month in the evening at The Tree, Cadmore End Tel 881183

Sparklers—4.30-6pm for 4-7 yr olds

Events

March

8th Village Hall Quiz, Tel 881913

22nd Holy Trinity Whist Evening 7.30pm Tel 881913

17th and 24th Hound of the Baskervilles by Lane End Players at Lane End Village Hall

April

26th Holy Trinity Whist Evening 7.30pm Tel 881913

May

10th Holy Trinity Skittles Evening 7.30pm Tel 881913

← THURSDAY Events

April

25th Garden visit to Haseley Court Tel 01491 638690

Saturdays

Regulars

Coffee Shop—first and third Saturdays of the month, 10-12noon, Lane End Village Hall

Lane End Conservation Group Action Day—10am First Saturday of the month meet in the Car Park by Lane End Surgery

Events

March

23rd RBL 1940s themed dance, 7.30pm at Lane End Village Hall. Tel 881436

April

27th Plant sale, Skirmett village hall

May

18th and 25th Hound of the Baskervilles by Lane End Players at Lane End Village Hall

June

1st Lane End Primary summer fete

8th Lane End village fete

Sundays

Regulars

Parish Communion—9.30 Holy Trinity Church Lane End (crèche first Sunday of the month)

Elim service—10.30 am at Elim Christian Centre, Edmonds Road, Lane End

Whistles & Bells dog behaviour school—9-12noon LEYCC, Tel Jenny 07703020344

Sung Eucharist/Family Service—11am St Mary's Church Cadmore End

Morning Service (Methodist)—11.15am Holy Trinity Church Lane End

Sunday lunch—Grand International Buffet and traditional carvery at The Tree, Cadmore End. Book on 881183

Evensong—6pm at Holy Trinity Church Lane End

Lane End Players—7.30pm Village Hall Tel 07706 426320

Events

March

24th Easter Sunday

April

14th Table Top Sale in Frieth Village Hall from 10.30am. Details from Friethvillage-hall@gmail.com or phone 01494 881176

28th Ridge Off-Roader, 10am, Bledlow Ridge School. 10k running race around Bledlow Ridge. Entertainment, tea, coffee and bacon sandwiches for spectators, medal and goody bag for finishers. Route details: www.ridgeoffroader.co.uk.

Milk Men

with Will Lacey 



 We all knew Lacey's milk was the best —
here's the 'science bit' to tell us why!

I've talked a lot in previous columns about the importance of making high quality feeds for our cows to eat. We spend all summer trying to make the best possible ingredients for them, we employ a specialist Bovine nutritionist to analyse their feed needs and then utilise the full potential of all available ingredients to develop a 'meal' that gives the cows everything they need to be strong and healthy as well as produce our delicious creamy milk. Today I want to go on to tell you about the milk, what makes it special and the benefits of drinking Guernsey milk.

Ninety eight per cent of milk available in British supermarkets comes from a breed of cow called the Holstein. These are large Black and white animals that originate from

Europe and are popular with farmers for the large volumes of milk that they produce (as farmers get paid a price per litre this makes sense). They are a good cow and cope well with the British climate and farming. On our farm we don't farm Holsteins,



we have always chosen to milk Guernsey cows, and I can give you many reasons as to why.

For us, the most important reason is milk quality, our cows won't produce the same volumes as the Holsteins, but the quality of the milk is in a different league. Guernsey milk is richer in both proteins and flavour and when you drink Guernsey milk, you get:

12% more protein, essential for growth and repair of body cells and

muscle growth.

33% more vitamin D, which is good for development of bones and teeth and maintaining a healthy heart

25% more vitamin A, which helps with vision, healthy skin and immunity against infection.

15% more calcium, which is vital for good, strong bones.

Compared to your average supermarket milk this obviously has numerous health benefits. On top of this, our milk also has three times more Omega 3 than 'normal' milk.

Omega 3 is essential for growth and recent research also shows it is beneficial for a healthy heart, stimulating blood circulation and reducing blood pressure as well as numerous other health benefits. Interest for milks containing Omega 3 has become so great that companies including Organic Valley and St Ivel now add fish oils to some of their milks to meet this demand.

Personally, I think this is shameful, if

they sourced their milk for its quality in the first place, rather than seeking the cheapest possible option they would have no need to add anything to the milk. We do not add anything to our milk, yet still it has the high levels of Omega 3.

The protein in our milk is also differ-

ent to the Holstein milk. There is much research being done worldwide into Beta Casein A2 protein. This differs slightly from the A1 protein that is found in most milk. It is thought that A2 milk is better for allergies such as those of the gut (including irritable bowel symptoms), skin rashes, hayfever and coughs. Some

suggest there is enough support for this that some companies are now selling milk specifically as A2 milk.

The quality of our milk has been recognised by many of you, local business and sports groups and so on. The BBC recently reported that milk is a good post-exercise recovery drink. All the proteins and vitamins I mentioned earlier help with recovery and muscle development, and studies suggest it is more beneficial to drink a glass of milk after

Guernsey milk has:

12% more protein

33% more vitamin D

25% more vitamin A

15% more calcium

200% more Omega 3

than 'normal' milk.

exercise than the specially developed sports drinks!

Today Guernsey cows equate to less than 1% of the British Dairy herd, this is in no small part due to the push from supermarkets over the last 20 years for your daily essential milk to be cheap, with no respect for the health and nutritional benefits that higher quality milk would have for the consumer. Fortunately for us, food quality and origin are becoming increasingly important to the British consumer, and this will in turn hopefully see the numbers of Guernsey cattle in the UK rise again.



YOU'VE SEEN OUR COWS IN THE FIELDS - NOW TRY THE MILK!

FRESH 100% GUERNSEY MILK

FROM YOUR LOCAL DAIRY

LACEY'S
FAMILY FARM



DELIVERED DIRECTLY TO YOUR DOOR!

LACEY'S FAMILY FARM, BOLTER END FARM, LANE END, BUCKS. HP14 3LP
TEL/FAX: 01494 881 979 WWW.LACEYSFAMILYFARM.CO.UK

PRODUCTS AVAILABLE FROM OUR FARM SHOP OR HOME DELIVERY



CHIMNEY SWEEP

Ivan Staines

Prompt-Clean-Reliable
Full Brush & Vacuum Sweep
Fully insured
All types of pots and cowls fitted

Tel: 01844 212382

JHC ELECTRICAL SERVICES & Property Maintenance

James Clark

All types of Electrical works undertaken

Rewires, in/outside lights, down lighters, new fuse boards, additional sockets, security lighting, fault finding and CCTV
City and Guilds/NICEIC Part P Qualified/IEE 17th Edition

All aspects of property maintenance carried out

Mob. 07720 598860 Tel/Fax. 01494 881766

The Dog House, 10 Elwes Road, Lane End, Bucks.

Email: jhcelectrical25@aol.com

www.jhcelectrical.co.uk



Fully Insured and all work Guaranteed.

Honest, Local, Reliable Tradesman. Established 12 years

A member of the Bucks County Council Trading Standards "Buy with Confidence Scheme"

Nature notes

Spring is sprung!

It is amazing how quickly spring seems to come, albeit with some set backs. The snowdrops are up and out in many places and so are the daffodils, though not in flower yet. Red kites are chasing each other, calling and so are many of the smaller birds. The weather does not really matter, it is day length that gets everything going.

Those of you that travel to Henley past Oaken Grove, the blue-bell wood, will have seen that the toad barrier is now up and the volunteers will soon be taking them across the road to the breeding ponds by the bucketful,

This year we have a huge new project in hand. We have built two large ponds in the wood itself and hope that in future the toads may use these instead of trying to cross the road. As they have to fill with rain water we may be too late this year but next should prove interesting— though toads are creatures of habit and their ancestors have been crossing that road in that exact area for hundreds or even thousands of years so it is a big ask, but let's keep our fingers crossed.

One never knows with nature, I built a pond in my garden a few years ago, it was just three feet by one foot by one foot deep and the following summer there were five pairs of frogs and three pairs of toads!

Lets pray for a nice hot summer this year so that our flower beds can fill with butterflies and that it is dry enough for young birds to fledge but wet enough to avoid a hosepipe ban! So much for global warming!

Nigel Snell

Email: katyjdunn@btinternet.com and **share** here any local photos, wildlife stories or interesting nature encounters...



Lane End's party animals...

Thanks to Margaret Scott for sending in this picture of a squirrel enjoying a relaxing Boxing Day. You might notice that the squirrel is actually on the 'wrong' side of the window. The owners of the house were away for Christmas and the squirrel had claimed squatters rights. It looked to have had quite a party in the living room in their absence!

Aston Rowant sculpture trail

If you've not been yet, head on up to Aston Rowant nature reserve on the far side of Stokenchurch and follow the sound and sculpture walk. There are amazing views of the Oxfordshire countryside from Beacon Hill and a lovely walk back through the woods with stops to listen and play with the interactive sculptures.

Moorend Common

Report by Katy Dunn

We've good news and bad regarding Moorend Common.

New Grant scheme

The good news is that we have had a positive meeting with the Forestry Commission about new funding for Moorend Common. Since the Wildlife Enhancement Scheme with Natural England came to an end in 2012, we have been without external funding to pay for essential maintenance works such as grass cutting and tree safety works.

To relieve the burden on the parish council we have been looking for different grant schemes to support Moorend Common and the Forestry Commission is enthusiastic about being involved with this important wildlife site.

Woodland management

We also feel that it is fitting that we should turn our attention to the woodland areas of Moorend Common as all the focus so far has been upon restoring the grassland ele-

ments of the site to fulfil the requirements of the SSSI (Site of Special Scientific Interest) designation.

All woodland requires maintenance to ensure its future survival. This often requires some tree-felling, which sounds counter-intuitive, but an overcrowded woodland limits light to the ground below, preventing new trees from regenerating naturally and stopping the growth of woodland flowers and herbs.

With each tree affecting one another, this reduces the quality of trees in the Woodland. If the majority of trees are the same age, they will all die at around the same time, ultimately leaving us with no trees to enjoy.

The healthiest woodland is that which has a mix of trees of different ages and a mix of habitats: the three major vegetative layers within woodlands are ground flora (woodland flowers and grasses) shrubs (bushes and small trees) and over canopy (tall trees).

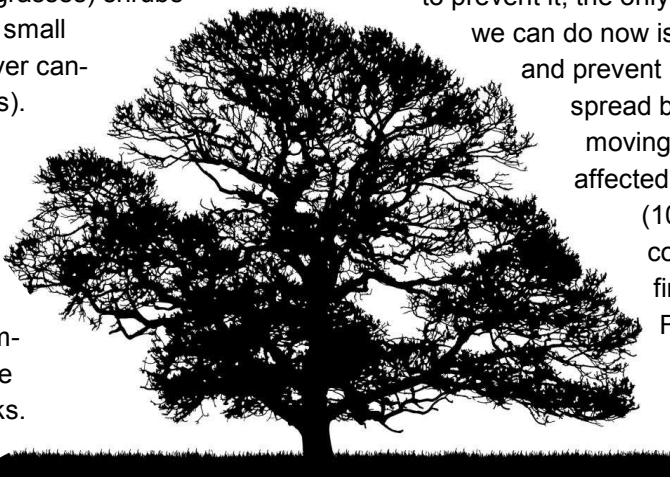
We will be working up a management plan with the Forestry Commission in the coming weeks.

Acute Oak Decline

The bad news is we suspect we have a form of Acute Oak Decline on Moorend Common. There's no definitive cause for this, it's more a combination of factors involving a beetle and a bacteria. The most obvious sign is death of the tree, but small D-shaped holes in the trunk made by the burrowing beetle and 'weeping' from the bark as the tree tries to flush out the bacteria are indicators.

The particularly worrying aspect with Moorend Common's occurrence of Acute Oak Decline is the speed with which it has hit. Usually the time-frame of death is 4-5 years, but our affected oaks have declined and died within a year. The Forestry Commission has contacted its research team to investigate.

There's nothing we could have done to prevent it, the only thing we can do now is to try and prevent its spread by removing the affected trees (10 cases confirmed).
Fingers



AFTERCARE SERVICES

We have all lost loved ones, special friends and even pets. They are always in our thoughts, but everyday life gets in the way and finding the time to tend your loved one's grave can be a struggle.

Why not talk to us with your specific requirements and let us take the time on your behalf to tend the resting place of those who are never forgotten.

- ♥ headstones washed ♥ silk flowers cleaned
- ♥ fresh flowers replaced ♥ weeds removed ♥ fully insured

Our services are carried out with great respect to the graves we are tending

For more information call the girls on

07583 245082 or 07805 545328



IAN. J. BEASLEY PROPERTY MAINTENANCE HOME IMPROVEMENTS BUILDING SERVICES

- ♦ Small building projects
- ♦ Kitchen & Bathroom fitting
- ♦ Shower rooms & showers
- ♦ Wall & floor tiling
- ♦ Internal & external:
- ♦ Alterations
- ♦ Carpentry work
- ♦ Decorating



Over 35 Years experience

Contact: Ian

Tel: 01494 881100 Mobile: 07720 251320

Email: i.beasley@homecall.co.uk

Schools



The PTA of Lane End Primary School is enjoying a record breaking year so far, with more than £1000

raised already. However, with a target of £3000, we still need your help. We have held an adult's quiz night, a children's fancy dress monster disco, a Halloween cake sale and a hugely successful Christmas Fair. Thank you to every one of you that helped or attended any of our events.

We also held a promotional evening, inviting local businesses into the school to see how we could all help each other. This produced some exciting partnerships, so watch this space for more updates! If you would be interested in joining up with the school, financially or in terms of hands-on help, please contact us. We are planning another promotional evening in the summer.

We have lots of fun events coming up in 2013, so please come along and support our lovely school. For more information on any of our events, please see our school website or contact Dannielle on 07740 192514.

Saturday 9th February - Movietime in school hall, 2pm-4pm, £1 per child
Friday 1st March - Bingo night from 7.30pm, £10 per person for 8 games. Cash prizes!!

Wednesday 27th March - Easter egg decorating competition and cake sale

Sunday 31st March - Village Easter Hunt

Saturday 1st June – School Summer Fete

We are looking forward to seeing you all at any one of these events and would like to thank

you for your continued support.



In my last article we were celebrating a very positive Ofsted report. This week, we met with parents, staff and governors to discuss the way forward to achieve the 'Outstanding' grade we all now aspire to. Lots of hard work ahead of us we know, but a lot of determined staff, plus supportive parents and governors to help us get there.

October brought a very successful Frieth Hilly, this year with both a 5K and 10K race. This truly inspirational event raises enough finance to allow us to have a fabulous computer suite for the children. The children were fantastic in that they raised over £6,000 for the NSPCC, plus money for Children in Need and the Smile charity. Children in Kites class were part of a Radio 3 broadcast and a group of children from Years 3-6 represented the school in a cross country event.

November brought a day of 'Thinking outside of the Box'. This engaged the children (parents and staff) in thinking laterally to solve problems. We had a superb display of both 2D and 3D models which the children felt represented the theme.

During November the head boy and girl and their deputies gave guided tours of the school to prospective parents. It is a joy to hear what the children feel are the most important features of the school. By mid-November the sounds of 'Baa-Baa Bethlehem', this year's nativity play, could be heard resounding around the school. This was the first time in many years that the whole school had been brought together to present a nativity.

At the beginning of December the children's School Council spent a

lovely morning decorating the Christmas trees at the Stag and Huntsman pub in Hambleden village. A very enjoyable experience at the best of times but to be presented with a cheque for £300 from the pub certainly improved the day. The money has already been put to good use the children will enjoy a theatre performance of 'The Greatest Fairy tale Ever' in February.

The last Monday of the term is always very special event at Frieth school in that we enjoy a hot Christmas lunch at the local pub (The Yew Tree) when party hats are worn and crackers are cracked. This is generously paid for by the school's PTA and cooked by the staff at the pub.

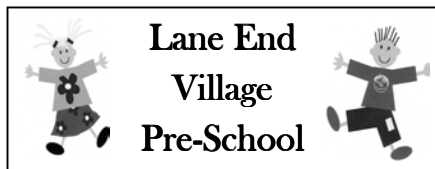
January has fled by, we needed to close for two days due to the snow but on our return we had a fabulous field filled with snowmen and a whole school snowball fight. Note to self must improve my aim for next year! Congratulations to Adams house Team who created the most inventive family of snow people and who worked amazingly well as a team.

We now have many exciting events to look forward to; celebrating Chinese New Year, the theatre visit, Easter Egg Hunt, a Quiz Night, raising money for Sue Ryder Foundation by having a big crazy hair day and The Great School Bake Off to raise

money for Comic Relief. We can't wait!

Lindsay Phillips, Head

The lead up to Christmas was as



exciting as ever for the children. As well as all the creative play, they practised their songs to entertain families and friends at a Christmas Sing Along.

The village hall stage looked wonderful, decorated with items the children had helped to make including a Giant Christmas pudding. Dressed in bright seasonal costumes, the children enjoyed being in the limelight. Peter from Lane End Players kindly set up a hand held microphone and in spite of not using it before, even shy children took it and sang solos or duets with amazing confidence.

Parents provided the party food for the children and there were mince pies and other refreshments for grown-ups. To finish a happy morning, Natalie Austin from Sure Start came in to play action and singing games. The raffle, sale of other items and donations raised £140 for funds, some of which was used for a new camera.

The new term has seen one day of closure because of the snow, but the chilly weather has not stopped us playing in the garden and feeding the birds. We are looking forward to our new, very popular themes this term - Space, Pirates and Dinosaurs. The children will be making space ship pancakes, coloured dinosaur pictures and pirate hats, masks and boats. Through these themes, the children are learning and developing within the Early Years curriculum.

We welcome children to join us at any age between two and four and a half, but spaces for two-year-olds are limited and we now have a waiting list in place. The youngest child on our waiting list is 6 months old! Give us a ring and book a visit to see the pre-school in action.

An assistant is needed to work two mornings a week from 9am to 1pm. Child care qualifications ideal, or must be prepared to take NVQ training. Call 07703 926196 for details.

Karen Monks, Leader

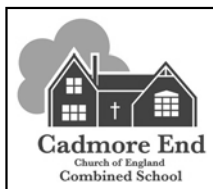
There has been a pre-school group in the Village Hall since the 1960's. It was first called Lane End Playgroup, then Phoenix Pre-School now Lane End Village Pre-School. Does anyone remember the actual year that it started because it could our 50th birthday?! If you have any memories or photo's I would love to hear from

you by email:

dorothy.harman@tesco.net or drop them into pre-school.

Dorothy Harman

The snow has



finally gone and Spring is in the air. Everyone has been very busy at Cadmore End School—our traditional pancake

races were great fun and enjoyed by all. Next on the agenda will be Easter preparations including our fun woodland Easter egg hunt, bonnet and egg competitions—always a favourite with the children!

After six years leading our school and a long and successful career in education, our headteacher, Peter Durrant, is retiring. Many new opportunities await him and we would like to thank Peter for making such a positive contribution to the life of Cadmore End School and wish him well in his new endeavours.

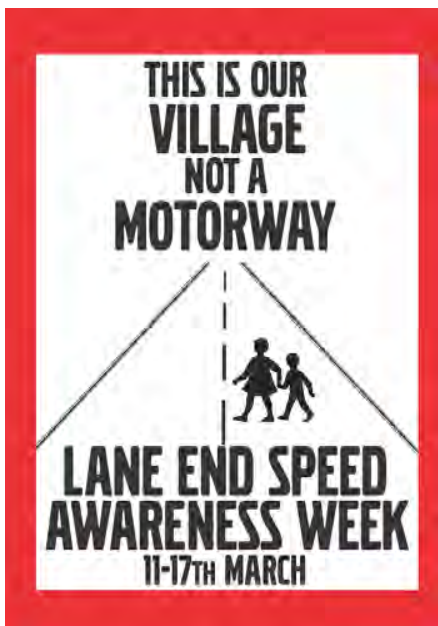
The governors are thrilled that an in-depth recruitment process has resulted in Lisa Fern accepting the post of headteacher from Easter. Lisa joins us from Rose Hill Primary School in Oxford where she is an Assistant Head Teacher. Rose Hill

won an award in 2011 for being the most improved Primary school in the country. Lisa is looking forward to getting to know everyone and joining our staff in providing our children with the best possible opportunities for learning through a rich and exciting curriculum.


We would like to thank all those who participated in the recruitment exercise, especially David Knights our Chairman.

Please contact the school office if you have any queries regarding Cadmore End Church of England School on 01494 881460.

Emma Spencer, School Governor



On the land

with Bryan Edgley 



Water, water, everywhere

Spring is a good time to review the past year, and let us hope for much less rain in 2013. In 2012 the rainfall records that we keep at Kensham Farm showed an increase of 34% above an average year, with a total of 1,104 millimetres (43.5 inches) whereas our ten year average, 2002 to 2011, showed an average of 821 mm (32.3 inches).

Harvest 2012 was a difficult time, with all the grain having to go over the grain dryer, some of it three times, in order to bring it down to between 14% and 15% moisture content. If we had not dried the grain it would have not been saleable and would not have kept well in store. Damp grain in store spontaneously heats up, just like fresh lawn mowings on a compost heap, and then mould sets in.

During August, while we were still harvesting, we had successfully seeded the fields to be cropped with oil seed rape in August 2012. Since

then we have used whirling bird scarers, which spin round in the wind, as well as some white plastic bags on tall sticks, to keep the pigeons away from the young plants.

But then the wet Autumn caused even more difficulties for the next



arable cropping season, since the fields were too soft to take the weight of a tractor for the Autumn seeding. In a normal year the first seedings of wheat, barley and oats are drilled in the middle of September, and we hope to complete seeding by the end of October. These cereal crops

would then be ready for harvesting in August of the following year.

However the fields were so wet throughout September and October that we were only able to seed three quarters of the planned acreage, and some of that has subsequently failed due to slugs eating off the young cereal plants at ground level. If Summer had been normal, with plenty of sunshine, then the grain used for seed would have been plumper and that might have given it the vigour to withstand some slug damage.

We were fortunate over seeding the fields near Harecramp, off Chequers Lane, with winter wheat on 16th January – after two fairly dry weeks and with enough frost to be able to take the tractors onto the land we were able to cultivate, harrow and seed the fields, finishing at 2am the next morning. Mid January is the latest that winter wheat can be seeded, so those fields that were too wet to seed in the Autumn and the crops destroyed by slugs will all have to be seeded with Spring variety crops in February, March or April.

One winter job that went well was the work on Finings Wood, each side of the B482 Finings Road on the Stokenchurch side of Lane End.

This work involved felling those trees which, following advice of the Chilterns Woodland Project were considered to be dead, spindly, unhealthy or overcrowded, and some which were too close to the road. This work was carried out by woodland contractors using a 'cherry picker', a hydraulic working platform with a reach of 27 metres mounted on a lorry but having all the control levers in the raised working platform. The traffic on the B482 made the job more difficult, necessitating the use of traffic lights.



Some longstanding Lane End residents have told me how they have appreciated seeing the result of this work, especially on the downhill side nearest to Finings Farm, and that the restored wood is now as they remembered it as children. We have sold most of the cordwood arising from this felling to be collected either by local residents with trailers or by firewood contractors. The ash logs

burn well when green, whereas logs from oak and other species such as beech, birch or hawthorn burn best after drying out in the stack for a season.

Two of the best oak trunks were sold to a local woodcarver for use as signs, carved nameplates and other craft work. These trunks were cut into suitable widths and cross sections in lengths of about 10 foot each with a mobile sawmill – a machine which comes in sections in a truck or trailer and is then assembled on the site.

Finings wood was so wet in early December that the truck had to be parked by the roadside and all the sections had to be carried up to the spot where the oak trees had fallen. It was fortunate that this work coincided with a study day on Woodland Management on Commons run by the Chilterns Commons Network, so that the owners and managers of



other Commons were able to see this contractor's mobile sawmill at work, converting locally grown oak into timber for local craft use.

Bryan and Alison Edgley started farming Kensham Farm at Cadmore End in 1955.

Their son, Charlie Edgley, manages the arable crops for the family partnership—around 2,300 acres, mainly of milling wheat, centred on Kensham Farm but including rented fields between West Wycombe, Sands, Booker, Fingest and Lane End.

www.kensham-farms.co.uk

Advertise in the Clarion

Connect with your local community, reach 1700 readers in their homes

£50 half page per issue

£85 full page per issue

discounts for
multiple issues!

WHITLER CONSTRUCTION LTD

*ESTABLISHED FOR OVER 35 YEARS, WE PRIDE OURSELVES
ON HIGH QUALITY WORK AND A RELIABLE SERVICE*

**FROM YOUR INITIAL IDEA WE CAN GIVE
YOU YOUR COMPLETE DREAM**



- EXTENSIONS
- NEW KITCHENS
- BATHROOMS
- HOUSE ALTERATIONS
- GENERAL MAINTENANCE

FOR MORE INFORMATION AND ADVICE CONTACT

CHRIS BUTLER ON 07971 487 324

7 ORCHARD ROW, BOLTER END LANE, WHEELER END, BUCKS HP14 3ND

TEL: 01494 882852 FAX: 01494 883032

Email. wconstruct@hotmail.com

Volunteer!

Volunteering is about helping others and giving back, but there are many gains for you in the process.

Around Lane End there are loads of ways to get involved:- working for the community on the parish council or with one of its working groups, practical outdoor work with the conservation group, reading with the children at the schools, or offering some of your time to support these causes below. What's stopping you?

Drop in lunch helpers

The drop in lunch has had a very successful year, with a group of wonderful volunteers and loyal regulars returning week after week. Some of our ladies have been helping at lunch club for many years and are now in need of a rest!

So we are now seeking new volunteers. This involves buying, (for which you will be reimbursed) cooking and serving a lunch one Thursday a month (on a rota) – can you help? **Please call Emma for more information – 01494 883878.**

Coffee Stop transport support

Do you have an hour to spare once or twice a month?

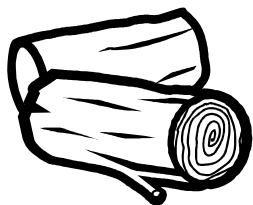
The Coffee Stop runs every Thursday in the Sycamore Room at the Village Hall from 10am-12noon.

We know that there are elderly folk in the village who would love to come in for a coffee and a chat on Thursday mornings, but need transport to bring them along and collect them at the end of the morning session. If you have transport and can spare an hour or two, maybe just once a month we would love to hear from you.

Please phone Rosemary Davies 01491 638201 or Betty Twitchen on 881721

Committee members for LEYCC

We need new committee members, so if your New Years Resolution is to help others, please join our small but active and enthusiastic committee to assist in organising our fundraising events. **Please call Emma 883878**



Quality Seasoned

Firewood

Full loads, half loads and bags

FREE DELIVERY

Call Christian (CD Agricultural) on

Tel: 881 326 / 07584 284844

The Window Doctor

**CARE & REPAIR FOR ALL YOUR
UPVC & ALUMINIUM WINDOW
& DOOR PROBLEMS**

- Replacement of broken down sealed units
- misting up inside glass
- Adjust front & back doors that do not shut
- New handles, hinges and door locks
- Replacement of patio door wheels
- New security handles with keys
- New door panels and cat flaps
- New Georgian style or leaded style sealed units
- All insurance work • Burglary damage • Servicing

PLUS INSTALLATIONS OF NEW UPVC WINDOWS & DOORS



Call us for a FREE Survey and Quotation,

No call out charge



Friendly Family Established Business

Cowling & Co.

Mobile: 07860 435742

Tel/Fax: 01494 483567

email: [windowdoctor@jcowling.plus.com](mailto>windowdoctor@jcowling.plus.com)

www.windowdoctor.co.uk

Why advertise webvideo in the parish magazine?

Because I like to use local businesses and meet people who live in my area - maybe you do, too!

PictureCo is a small local production company. We produce video for web, presentations and digital signage for smaller organisations and supply camerawork, editing and live production to agencies working for multinationals.

How can we help you?

Using video attracts and engages customers - and it boosts your search engine rankings!

We will:

- * Have a friendly chat to work out the best approach for you
- * Create or help you create video clips
- * Upload them to a video server
- * Research keywords, set up metadata and backlinks
- * Embed the videos on your website if required
- * Set up a YouTube or Vimeo channel for you or host your videos on our site

Please give us a call to discuss how we can help - Prices start from under £500 for professional production.

PICTURECO

Web clips / Video Production / Video SEO

www.youtube.com/PictureCoTV

*Botany House, Wheeler End, High Wycombe, HP14 3ND,
phil@pictureco.tv, 881923 / 07770 482652*

Ask the: PC paramedic

with Paul Rubens 



If you have broadband at home and you haven't visited your Internet company's website recently, it could well be worth your while doing so.

That's because most companies improve their Internet packages regularly, offering larger and larger data allowances or reducing their prices significantly. A large data allowance is especially important if you use streaming video services like Netflix, LoveFilm, or Sky On Demand.

The problem is that few Internet companies bother to tell their existing customers about the improved deals. Last time I checked my Internet company's website I discovered a package that cost less, offered greater speed, and included a far larger data allowance than I was getting at the time.

Switching to a better deal can usually be done in a matter of minutes, so here's my tip for spring: visit your Internet company's website today. You may be surprised at the packages on offer that they haven't told you about.

As ever, if you need help with your broadband service or any other computer matter, please don't hesitate to get in touch!

GOT COMPUTER PROBLEMS?



- Wireless networking
- Data recovery
- Viruses and crashes
- Internet setup
- Hardware upgrades
- Email problems

For help with your home or small business computer

Call Paul: 01494 881635

Friendly local service since 1998

No call out fee—low cost—no job too small

Safety and Security

Burglaries

In January seven dwelling burglaries were reported in our neighbourhood. There were three in Stokenchurch, two in Radnage and two in Lane end – one on Widdenton View and another on Coronation Crescent. There was only one non-dwelling burglary (includes break-ins to sheds and garages) in West Wycombe.

Anti-Social Behaviour(ASB)

The team are pleased to say that there does not appear to be any ON-GOING anti social behaviour issues on the neighbourhood at this time being reported. However if you feel there is an issue that you would like us to help with please give us a call.

Offenders brought to justice

Two youths from Lane End have been cautioned for Burglary after stealing a bicycle from a garden shed in Lane End. A 21 year old male from High Wycombe has been charged with dangerous driving after driving through the area of West Wycombe at 78mph in a 30mph zone. A 49 year old male from High Wycombe has been charged with two counts of theft from a motor vehicle

in West Wycombe and one offence of vehicle interference. A 55 year old male from Lane End has been charged with assault ABH after a domestic dispute in Lane End.

Speeding

Over the past month we have prioritised Marlow Road, Lane End and Bolter End for our speed enforcement patrols, 21 Fixed Penalty Notices issued. Many residents of Lane End have informed us of their concerns about the speed vehicles are travelling through the village and we have arranged with The Clarion and Lane End Parish Council a Speed Awareness Week.

Partnership Activity

Did you know that there is a Neighbourhood action group that represents the Stokenchurch, Lane End, Piddington and West Wycombe area? The NAG consist of a voluntary group of people who meet with the police on a regular basis to discuss issues that have an impact upon the local community and to try and find a joint way of solving them. If interested in getting involved, please get in touch.
www.thamesvalley.police.uk/

Ask the: plumber

with Bill Blake 



Q: Bill, my shower has stopped working, I think it may be the pump

A: I've seen lots of showers that are not working recently.

The most common cause is not the pump but a blocked shower head. The small holes in the head block up with limescale because we're in a hard water area. If you have a metal shower head, then clear each individual hole with a needle (which is very boring, I know). The newer type of shower has a rubber spray head and in this case you just rub it hard with your hand to clear the holes.

A less common problem is a blocked hose. The liner in the flexible shower hose comes loose and rucks up in the stiffer outer shell and stopping water passing through. In this case you just replace the hose.

A rare problem is when the pump sucks debris from the cold water storage tank, blocking the pipe and shutting down the pump.

Alternatively, it could just be the pump!

Bill Blake

**Your reliable and trustworthy
'house trained' local plumber**

**Happy to take on all your household
plumbing jobs from mending a dripping tap to
installing your new bathroom**

Phone: 07762 807767

Based in Wheeler End

NO VAT, NO CALL-OUT CHARGE



Raymond Good (Joiners) LTD

Myze Farm, Oxford Road, West Wycombe
HIGH WYCOMBE, HP14 3BA

Staircases, Windows, Doors & Conservatories

Any Bespoke Joinery Undertaken - Designed, Manufactured and Installed

Replacement PVCu Windows, Doors & Conservatories

Construction Works also Undertaken – Renovations, Extensions etc.

For more information call us on

TEL: 01494 881789 FAX: 01494 880789

email: sales@raymondgood.co.uk

Or visit our Website **www.raymondgood.co.uk**

Reg. in England No. 730437



Vat Reg. No. 194 2666 35



Phil Spackman Pest Control Services

Domestic, Commercial & Agricultural
Insects & Bugs, Rodents & Birds
Moles & Wildlife Management.



Surveys & estimates free of charge
Maintenance contracts available
Fully Insured & BPCA Member

For a fast, discreet response and a dedicated, professional service



**Tel: 07947 819554
01494 528240**



Ask the: Vet

with Clare Hamilton 



Q. I've heard about Lungworm- what is it and what does it mean for my pet?

A. Lungworm is a parasite affecting dogs. It is carried by slugs and snails and dogs can become infected by eating them, either deliberately (there's no accounting for taste!) or accidentally when drinking from puddles, playing with toys that have been left outside, or rummaging through the undergrowth. Slugs and snails thrive in warm, damp conditions so Spring can be a high risk time of year for your dog encountering these garden pests.

The worm lives in the heart and major blood vessels to the lungs and can cause the dog serious problems including bleeding, coughing or a high temperature. Infection can often be fatal if not diagnosed and treated promptly.

The difficulty is that many infected dogs do not show any symptoms until the disease is quite far advanced. By this point treatment is much more difficult and many dogs require hospitalisation and often intensive care.

Lungworm is **not** prevented or treated by the conventional use of worming tablets, but it can be treated and prevented with a regular monthly spot on treatment. If you think your dog may be at risk please contact your vet and they can advise you on the best treatment. Or call us on 01494 883443

Have a question for the Vet? Email reception@cherrytreevets.com



Patient of the month:

When Kipper was run over, his leg and pelvis were broken and his paws degloved. (Ouch!) Kipper's leg was saved with bone-pinning operations and a skin graft.

Kipper has submitted to pink leopardskin bandages with good grace and is making a good recovery. However, he has been driving nurses Hannah and Katrina to distraction with his inability to stop licking his poorly paw and uncanny dexterity at removing the 'cone of shame'!

Gardening

with Dave Dunbar 



Alternatives to conifers for a quick hedge

The snow has come and gone, and the cold snap will have induced the bulbs to prepare for flowering. Water levels remained high through winter keeping the ground at filled capacity, muddy and sodden, difficult to work.....not a happy gardener!

Seasonal Top Tips:

Here's a few evergreen tips from Paul in Riverside Nurseries, one of my local tree and shrub suppliers. If you want to hide unsightly buildings you don't have to be stuck with conifers. There are a number of different shrubs available grown on a 2m clear stem bushing up to 3-4m high, such as Portuguese laurel, Photinia, Holly, Privet and even an evergreen Oak tree. Many popular evergreens are acid lovers, such as Camellia, Rhododendron, Pieris and Skimmia. These can suffer during dry periods if watered from taps, due to the Alkaline contents in tap water. Where possible use rain water stored in water butts to prevent this. And finally, If

you are thinking of growing acid loving plants, simply look around to see what's growing well in the local area, it's likely you've got the same soil.

If you want to attract birds into the garden this year here are a few ideas which will help. Birds like mature trees and hedges for habitats ideal for nesting and shelter, and because of the variety of natural food present. Oak, birch, beech, rowan and willow provide acorns, nuts, berries and catkins, as well as attracting insects. Fruit trees are a good source of food and also attract edible insects. Sunflowers, honesty, cornflowers and foxgloves are good seed-producing flowers. Blue and great tit chicks love caterpillars which primroses attract, and buddleia provide the butterflies to in turn provide the caterpillars.

Don't forget early Spring is a good time for increasing stock for lots of herbaceous plants, and moving things around, mulching, and so

on....bring on the sunshine!

Favourites:

Here's an interesting flowering tree, whilst all trees flower this one does so with lilac colour and scented foxglove-like flowers (pictured right) that cover the whole tree before the massive leaves appear in spring. It's often referred to as the Foxglove Tree. *Paulownia tomentosa* is a deciduous, fully hardy specimen but beware, late frosts damage flower buds. On top of this it should be grown in deep, well drained soil, sheltered from strong winds, and newly planted trees may take some time before they flower.....get



through that and it'll be

Dave's mystery plant:

I am a group of hardy border plants which last for only a few years, but I do pop up repeatedly from dropped seed. I have rough leaves and tall spikes of bell like flowers in summer of assorted colours. In dry periods I need watering. I have been used for medicinal purposes to regulate the heart rate. **What am I?**

Answer: Digitalis. (Foxglove)

ORNAMENTAL LANDSCAPES

~Former Royal Horticulturalist~

Is available for

Garden Design, Build, & Maintenance Projects

Dave Dunbar

(National Diploma in Amenity Horticulture)

Large or small jobs undertaken including.....

Patios, Walls, Paths, Decking, Turfing, Planting, Hedge Cutting & Fencing, Ponds & Waterfeatures, Pruning & Tree Surgery,

Re-vamping unsightly borders, etc.

Please view our photos on our website

[**www.ornamental-landscapes.co.uk**](http://www.ornamental-landscapes.co.uk)

01494-883846 or 07833-684065

Bus timetable

High Wycombe - Lane End - Stokenchurch

28/48

Also showing evening journeys on 32 and 31

MONDAY TO FRIDAY													From: 29 July 2012
Service number:	28	28	28A	48	48	28	48	48	28C	48	28	28	
Notes:	sch	nsch										nsch	
High Wycombe Bus Station, Gate C	07:00	07:10	08:45	09:40	10:40	10:45	11:40	12:40	12:45	13:40	15:15	15:55	
Dashwood Avenue, Half Moon				09:45	10:45		11:45	12:45		13:45			
Desborough Avenue, Wendover Arms	07:03	07:13				10:48			12:48		15:18	15:58	
Cressex Business Park, Lincoln Road	07:05	07:15				10:50			12:50		15:20	16:00	
Booker ASDA	07:09	07:18				10:53			12:53		15:23	16:03	
Clayhill, Air Park	07:12	07:21				10:56			12:56		15:26	16:06	
Sands, The Hour Glass				09:48	10:48		11:48	12:48		13:48			
Sands, Lane End Road				09:49	10:49		11:49	12:49		13:49			
Lane End, The Row				09:55	10:55		11:55	12:55		13:55			
West Wycombe, The Swan Inn			08:54										
Studley Green, St Francis Road			09:00										
Cadmore End, Combined School			09:08										
Lane End, Simmons Way	07:17	07:26	09:12			11:01			13:01		15:31	16:11	
Lane End, The Row	07:20	07:29	09:15			11:04			13:04		15:34	16:14	
Cadmore End, Combined School	07:24	07:33							13:07			16:17	
Stokenchurch, Jubilee Road									13:11				
Stokenchurch, The King's Hotel	07:31	07:40										16:25	
Ibstone, School	07:40												

MONDAY TO FRIDAY												
Service number:	28	48	48	28	48	32	32	32	32	31		
Notes:	sch											
High Wycombe Bus Station, Gate C	15:55	16:25	17:20	17:30	18:10	18:47	19:45	20:45	21:45	22:10		
Dashwood Avenue, Half Moon		16:31	17:26			18:52	19:50	20:50	21:50			
Deeds Grove				17:36								
Desborough Avenue, Wendover Arms	15:58			17:39								
Shelley Road				17:42								
Cressex Business Park, Lincoln Road	16:05			17:47								
Booker ASDA	16:10			17:51		19:05	20:02	21:02	22:01			
Clayhill, Air Park	16:14			17:55		19:08	20:04	21:04	22:04			
Sands, The Hour Glass	16:18	16:34	17:29		18:19							
Sands, Lane End Road		16:37	17:32		18:21							
Lane End, The Row		16:43	17:38									
West Wycombe, The Swan Inn											22:30	
Studley Green, St Francis Road											22:35	
Cadmore End, Combined School											22:45	
Lane End, Archers Way					18:27							
Lane End, Simmons Way	16:23			18:00	18:29	19:14	20:09	21:08	22:08			
Clayhill, Air Park					18:34						(22:55)	
Lane End, Village Hall											22:40	
Lane End, The Row	16:27			18:03		19:16	20:11	21:10	22:10			
Cadmore End, opp. Combined School	16:30			18:06								
Stokenchurch, The King's Hotel	16:38			18:13						22:40		
Ibstone, School	16:47											

Notes: sch - Bucks schooldays only

High Wycombe - Lane End - Stokenchurch

28/48

Also showing evening journeys on 32 and 31

SATURDAY										
Service number:	48	48	48	48	48	32	32	32	32	31
High Wycombe Bus Station, Gate C	09:25	10:25	11:25		16:25	17:45	18:45	19:45	20:45	21:45
Dashwood Avenue, The Half Moon	09:30	10:30	11:30		16:30	17:50	18:49	19:49	20:49	21:49
Sands, The Hour Glass	09:33	10:33	11:33		16:33	17:53	18:52	19:52	20:52	21:52
Sands, Lane End Road	09:34	10:34	11:34	and	16:34	17:54				
Lane End, The Row	09:40	10:40	11:40	then	16:40					
Lane End, Archers Way				at the		17:59				
Booker ASDA				same			19:00	20:00	21:00	22:00
Clayhill, Air Park				mins			19:03	20:03	21:03	22:03
West Wycombe, The Swan Inn				each						22:30
Studley Green, St Francis Road				hour						22:35
Stokenchurch, King's Arms				until						22:40
Cadmore End, Combined School										22:45
Lane End, Village Hall										22:50
Lane End, Simmons Way					18:01	19:09	20:09	21:09	22:09	
Lane End, The Row						19:14	20:14	21:14	22:14	
Clayhill, Air Park					18:06					22:55

SUNDAY					
Service number:	48A	48A	48	48	48
High Wycombe Bus Station, Gate C	09:50	11:50	13:50	15:30	17:35
West Wycombe Road, Mill End Road	09:54	11:54	13:54	15:34	17:39
West Wycombe, The Swan Inn	09:56	11:56			
Piddington, King Street	09:59	11:59			
Studley Green, St Francis Road	10:02	12:02			
Stokenchurch, Jubilee Road	10:05	12:05			
Stokenchurch, The King's Hotel	10:08	12:08			
Cadmore End, Combined School	10:15	12:15			
Lane End, Village Hall	10:18	12:18			
Sands, Lane End Road			13:58	15:38	17:43
Lane End, Simmons Way	10:20	12:20	14:04	15:44	17:49
Lane End, Village Hall			14:05	15:45	17:50
Cadmore End, Combined School			14:08	15:48	17:53
Stokenchurch, The King's Hotel			14:15	15:55	18:00

For all journeys on routes 48/48A, 32 and 31 please see individual service timetables

Routes 28, 28A and 28C are operated by Carousel Buses 01494 533436
Routes 32, 48 and 31 are operated by Arriva 0844 800 4411

Passenger Transport at BucksCC: *There haven't been any changes to these services since July and there aren't any planned for the next couple of months. Our latest guide to bus services in South Buckinghamshire, including all routes in Wycombe, Chiltern and South Bucks districts should be available in the next couple of weeks and residents can pick a copy up at libraries, tourist information centre's and council offices in the area.*

Stokenchurch - Lane End - High Wycombe

28/48

Also showing evening journeys on 32

MONDAY TO FRIDAY												From: 29 July 2012			
Service number:	48	48	28	28	48	28	48	48	28	48	28C				
Notes:			sch	nsch											
Ibstone, School			07:43												
Stokenchurch, The King's Hotel			07:52	08:05											
Cadmore End, Combined School			07:59	08:12		09:08									
Clayhill, Air Park	06:55	07:20			08:45										12:56
Lane End, The Row							09:56	10:56				11:56	12:56		
Lane End, Village Hall			08:01	08:14		09:11									
Lane End, Simmons Way	07:00	07:25	08:03	08:15	08:50	09:12	09:58	10:58		11:01	11:58	12:58	13:01		
Lane End, The Row			08:07	08:18		09:15				11:04					13:04
Lane End, Archers Way	07:02	07:27			08:52		10:00	11:00			12:00	13:00			
Cadmore End, Combined School															13:07
Studley Green, St Francis Road															13:15
West Wycombe, Village Hall															13:21
Clayhill, Air Park			08:13	08:22		09:19				11:08					
Booker YMCA			08:17	08:26		09:23				11:12					
Cressex Business Park, Lincoln Road			08:21	08:29		09:26				11:15					
Sands, Lane End Road	07:08	07:33			08:58		10:05	11:05			12:05	13:05			
Sands, The Hour Glass	07:10	07:37			09:00		10:07	11:07			12:07	13:07			
Marlow Hill Schools			08:29												
Deeds Grove						09:29									
Shelley Road						09:33									
Desborough Avenue, The Wendover Arms				08:31		09:35				11:17					
Dashwood Avenue, The Half Moon	07:15	07:41			09:05		10:11	11:11			12:11	13:11			
High Wycombe Bus Station	07:20	07:46	08:38	08:36	09:10	09:39	10:15	11:15	11:22	12:15	13:15	13:28			

MONDAY TO FRIDAY											
Service number:	48	28	48	48	32	32	32	32			
Notes:											
Lane End, The Row	13:56		16:44	17:39							
Lane End, Village Hall											
Lane End, Simmons Way	13:58	15:31	16:46	17:41	19:14	20:09	21:08	22:08			
Lane End, The Row		15:34			19:16	20:11	21:10	22:10			
Lane End, Archers Way	14:00		16:48	17:43							
Clayhill, Air Park		15:38			19:24	20:18	21:17	22:16			
Booker ASDA					19:32	20:25	21:24	22:23			
Booker YMCA		15:42									
Cressex Business Park, Lincoln Road		15:45									
Sands, Lane End Road	14:05		16:54	17:49	19:40	20:33	21:32	22:31			
Sands, The Hour Glass	14:07		16:56	17:51							
Desborough Avenue, The Wendover Arms		15:47									
Dashwood Avenue, The Half Moon	14:11		17:00	17:55	19:42	20:35	21:34	22:33			
High Wycombe Bus Station	14:15	15:52	17:05	18:00	19:46	20:39	21:38	22:37			

Notes: sch - Bucks schooldays only

Stokenchurch - Lane End - High Wycombe

28/48

Also showing evening journeys on 32

SATURDAY										From: 29 July 2012			
Service number:	48	48	48		48	48	48	32	32	32	32		
Clayhill, Air Park	07:53	08:53											
Lane End, The Row			09:41	and	14:41	15:41	16:41						
Lane End, Simmons Way	07:58	08:58	09:43	then	14:43	15:43	16:43	19:09	20:09	21:09	22:09		
Lane End, Archers Way	08:00	09:00	09:45	at	14:45	15:45	16:45						
Lane End, The Row				the				19:14	20:14	21:14	22:14		
Clayhill, Air Park				same				19:20	20:20	21:20	22:20		
Booker ASDA				mins				19:28	20:28	21:28	22:28		
Sands, Lane End Road	08:05	09:05	09:50	each	14:50	15:50	16:50						
Sands, The Hour Glass	08:07	09:07	09:52	hour	14:52	15:52	16:52	19:36	20:36	21:36	22:36		
Dashwood Avenue, The Half Moon	08:11	09:11	09:56	until	14:56	15:56	16:56	19:39	20:39	21:39	22:39		
High Wycombe Bus Station	08:15	09:15	10:00		15:00	16:00	17:00	19:43	20:43	21:43	22:43		

SUNDAY

Notes :	48A	48A	48	48	48
West Wycombe, The Swan Inn	09:56	11:56			
Piddington, King Street	09:59	11:59			
Studley Green, St Francis Road	10:02	12:02			
Lane End, Simmons Way			14:04	15:44	17:49
Lane End, Village Hall			14:05	15:45	17:50
Cadmore End, Combined School			14:08	15:48	17:53
Stokenchurch, Jubilee Road	10:05	12:05			
Stokenchurch, The King's Hotel	ARR	10:08	12:08	14:15	15:55 18:00
Stokenchurch, The King's Hotel	DEP	10:09	12:09	14:16	15:56 18:01
Stokenchurch, Jubilee Road			14:19	15:59	18:04
Studley Green, St Francis Road			14:22	16:02	18:07
Piddington, King Street			14:26	16:06	18:11
West Wycombe, Village Hall			14:29	16:09	18:14
Cadmore End, Combined School	10:15	12:15			
Lane End, Village Hall	10:18	12:18			
Lane End, Simmons Way	10:20	12:20			
Sands, The Hour Glass	10:29	12:29			
West Wycombe Road, Mill End Road	10:31	12:31	14:32	16:12	18:17
High Wycombe Bus Station	10:35	12:35	14:36	16:16	18:22

For all journeys on routes 48/48A and 32 please see individual service timetables

Routes 28, 28A and 28C are operated by Carousel Buses 01494 533436

Routes 32, 48 and 31 are operated by Arriva 0844 800 4411



B&T Supermarket

Your friendly local store

Choice of Groceries, Fresh Fruit & Vegetables,
Dairy Produce, Wines, Spirits, Lagers and Beers

Dry Cleaning

Carpet Cleaner for Hire

Paypoint Terminal, Re-charge Electric Keys & Gas Cards,
TV Licence, Rent and Council Tax,
Mobile phone Top-ups, Photocopying

IN-STORE LINK CASH MACHINE

Fresh crusty bread
baked daily



*Check for regular
special offers!*

Edmonds Shopping Centre
Edmonds Road, off Archers Way
(next to Elim Centre)
Tel: 01494 882346

The Clarion is the Parish of Lane End's non profit-making magazine, for the sharing of information about Parish activities. Neither the Editor nor the Parish Council, whilst sponsoring the magazine, takes responsibility for the statements and/or views expressed herein.

We welcome any news or diary dates from community organisations and letters from individuals. The next copy deadline is 1 May and the next issue will be out in the first week of June.

Send copy to katyjdunn@btinternet.com

Or call Katy on 01494 883883 for more info

FREE TRAINING COURSES

For those aged 16 and over

Plumbing

Painting & Decorating

Car Mechanics

Gardening & Landscape

Cookery

Numeracy & Literacy



Lane End Oasis Project

21 High Street, Lane End, HP14 3JF

**For further
Info contact**

**Pastor
John Richards
Tel: 881112**

Useful Telephone Numbers...

Parish Clerk—Hayley Glasgow	01494 437111
Lane End Surgery	01494 881209
Lane End Pharmacy	01494 880774
NHS Direct	0845 46 47
Lane End Holy Trinity Church	01494 881913
Lane End Primary School	01494 881169
Lane End Village pre-school	07703 926196
Lane End Village Hall	01494 881913 / 881298
Frieth Village Hall	01494 881176
Lane End Youth & Community Centre	01494 883878 / 07932 326046
Elim Christian Centre	01494 882587
Lane End Oasis Centre	01494 881112
Cadmore End Village Hall	07917 573083 / 881938
Cadmore End C of E Church	01494 881913
Cadmore End Primary School	01494 881460
Bucks County Council	01296 395000
Wycombe District Council	01494 461000
Highways On Call	0845 2302 882
Flytipping	0845 330 156
Police—non emergency	0845 8505 505
Wycombe General Hospital	01494 526161



Rosebud Aromatherapy

Karen O'Donnell
Cater Road
Lane End
High Wycombe
HP14 3JD
TEL: 07548 277 296

Treatments

Aromatherapy

60 minutes £40.00

30 minutes £25.00

Massage

60 minutes £40.00

30 minutes £25.00

Thermo Auricular Therapy (Hopi Ear Candles)

30 minutes £25.00

With Sinus Massage

45 minutes £35.00

Gift Vouchers

£5.00 to £50.00

Homemade Natural Products

Pre designed or Personal prescription

Contain only natural vegetable based ingredients.

Suitable for Vegetarians and Vegans.

Choose your own combinations from Aromatherapy

Candles, Bath products, massage oils, Bath melts,

Massage bars, Skin care and Lip balms.

Please call for a free catalogue, more information about
Therapies or to book an appointment.

Fully Qualified Practitioner with 15 years experience.

*****STEEL STOCKISTS, WELDERS AND FABRICATORS*****

R.S.J.'s IN STOCK

E.&R.MEAKES LTD.

BLACKSMITHS AND AGRICULTURAL
ENGINEERS

MOBILE CRANE HIRE

CUTTING AND MOBILE WELDING

FORGE WORKS, LANE END, HIGH WYCOMBE

Telephone: High Wycombe 881262

**** Ornamental Ironwork * Ironmongery and Tools ****

**** Garden Tools and Sundries * Fencing Materials ****

**** Paints and Decorating Materials ****



Cherry Tree Veterinary Practice is small, family run veterinary practice in Lane End.

Open 7 days a week for appointments, we can care for all your pet's healthcare needs from vaccinations to operations on site in the village. We aim to provide an exceptional, personal service in a relaxed and friendly environment.

Feel free to pop in and say hello and we can show you round!

Call us on
01494 883443

Or visit our website
www.cherrytreevets.com