

Useful Telephone Numbers...

Parish Clerk—Hayley Glasgow	01494 437111
Lane End Surgery	01494 881209
Lane End Pharmacy	01494 880774
NHS Direct	111 / 0845 46 47
Lane End Holy Trinity Church	01494 881913
Lane End Primary School	01494 881169
Lane End Village Hall	01494 881913 / 881298
Frieth Village Hall	01494 881176
Lane End Youth & Community Centre	883878 / 07932 326046
Elim Christian Centre	01494 882587
Lane End Oasis Centre	07592 587554 / 881999
Cadmore End Village Hall	07917 573083 / 881938
Cadmore End C of E Church	01494 881913
Cadmore End Primary School	01494 881460
Bucks County Council	01296 395000
Wycombe District Council	01494 461000
Highways On Call	0845 2302 882
Flytipping	0845 330 156
Police—non emergency	101
Wycombe General Hospital	01494 526161

From the Editor

It's been a busy summer in the Lane End parish. We've seen sad demises with the closure of Lane End Pre-School (see p43) and the Lane End Conservation Group (p7). However, there have also been exciting new openings such as the new luxury bath products shop next to the barbers adding some glamour to our high street.

We've come together for the village fete in June, the Fun Day at the playing fields at the beginning of August and the horticultural show (see p9) only a couple of weeks ago.

Fortunately, the fun is not yet over as there's always so much going on in our villages. In the next couple of weeks alone there's Cadmore End Festival 6/7 September, a Fun Day at Lane End Youth and Community Centre on 7 September and a Children's Trail at Moorend Common on the 14th to keep us busy.

Here's hoping for an Indian summer (don't we hope for it every year) and some glorious autumn colour in the woods and fields to enjoy.

Katy (Editor) katyjdunn@btinternet.com 01494 883883

Advertise in the Clarion

Connect with your local community,
reach 1700 households in the area

£55 half page per issue

£90 full page per issue

Discounts for multiple issues

Welcome to everything you need in an English country pub



*Gastro Pub
of the Year
Award Winner*

*Recommended on
TripAdvisor*

01494 88 22 99

www.grouseandale.com

- *from light lunches to full 3-course meals*
- *Cask Marque accredited real ales*
- *extensive selection of wines – 20 by the glass*
- *function room and private dining area for parties of up to 50 dining or 80 buffet*
- *courtyard dining and drinking*
- *wi-fi internet throughout*

Grouse & Ale, High Street, Lane End, HP14 3JG

The Clarion is the Parish of Lane End's non profit -making magazine, for the sharing of information about Parish activities. Neither the Editor nor the Parish Council, whilst sponsoring the magazine, takes responsibility for the statements and/or views expressed herein.

We welcome any news or diary dates from community organisations and letters from individuals. The next copy deadline is 1 November and the next issue will be out in the first week of December.

Send copy to katyjdunn@btinternet.com

Or call Katy on 01494 883883 for more info



Let's face it, this isn't going to happen. Cleaning up after your dog is your responsibility.

The situation is getting worse on the common around the church, on the playing fields and even on our walkways and pavements.

If you wouldn't want to step in it, don't leave it for others to.

Please clean up after your dog



B&T Supermarket

Your friendly local store

Choice of Groceries, Fresh Fruit & Vegetables,
Dairy Produce, Wines, Spirits, Lagers and Beers

Dry Cleaning

Carpet Cleaner for Hire

Paypoint Terminal, Re-charge Electric Keys & Gas Cards,
TV Licence, Rent and Council Tax,
Mobile phone Top-ups, Photocopying

IN-STORE LINK CASH MACHINE

Fresh crusty
bread baked
daily



Check for regular
special offers!

Edmonds Shopping Centre
Edmonds Road, off Archers Way
(next to Elim Centre)
Tel: 01494 882346



Your Parish Council



laneendparishcouncil.org.uk

Parish Clerk ♦ Hayley Glasgow

Tel: 01494 437111

clerk@laneendparishcouncil.org.uk

74 New Road

Sands

High Wycombe

Bucks HP12 4LG

🦋 Councillors 🦋

Chairman: Cllr Michael Detsiny

Vice Chairman:

Cllr Graeme Coulter

Cllr Mandy Dunning

Cllr Jane Osborn

Cllr Allan Simmons

Cllr Lorraine Smith

Cllr Keith Wright

Cllr Callum Stewart

Cllr Nigel King

Cllr Mandy Sarney

Cllr William Hunt

🦋 Lane End Parish Council report by Hayley Glasgow

Christmas in the Village

Although this is a little early, we thought we would do a save the date in good time!

This years Christmas in the Village event will take place on Friday 5 December 2014 in the Lane End Village Hall. The event will start at 6.30pm with carol singing and other activities. Free refreshments and much more!

Bus Shelter on The Row

You probably have seen the bus shelter on The Row has been knocked over. The parish council has commissioned a new bus shelter to be installed and we hope this will be done shortly.

Cycle rack in the car park by the Doctors Surgery

The parish council received a request for a cycle rack to be installed so that more members of the community could ride to and from the village centre. We thought this was a fantastic idea and are currently in the process of obtaining permission from WDC.

Route 48 (Arriva) Monday - Saturday, at roughly hourly intervals during the working day, runs from Lane End to High Wycombe to Great Missenden.

Route 28 (Carousel) Monday - Friday, fills in some gaps in the route 48 service. Runs between Lane End and Asda. Some buses continue through Lane End to Cadmore End and Stokenchurch. It does not run on Saturday.

Route 32 (Arriva) Evenings only, Monday - Saturday. Runs to and from High Wycombe via Asda.

Route 48A / 48 (Vale Travel) Sundays only. Runs between Lane End, Cadmore End, Stokenchurch and High Wycombe.

Bus Stops The bus services serve several stops as they pass through Lane End and Cadmore End. Information sheets at each stop list the time and route number of each bus, plus its destination. This can be confusing because route 48 buses are shown going to Great Missenden, but they **do** go through High Wycombe. In this guide, departure times of buses to High Wycombe are shown from the Archers Way stop - at other stops the times may be a minute or so earlier or later, but these can be found at each stop.

Forest School



Sunshine

MONTESSORI NURSERY

The Old Village School, Bullocks Farm Lane, Wheeler End, HP14 3NH

- Full day care nursery
- Babies (3 mths) to 5 year olds
- Open 51 weeks/yr 8am-5.45pm
- Bright, spacious, rural location
- Holiday childcare available
- FREE 15 hrs per week for 3/4 year olds
- Ofsted report available

Phone: 01494 880607

www.sunshinemontessori.com

Bus times

Parish councillor Nigel King has kindly attempted to make some sense of the chaos that is the Lane End bus service. Many thanks and hats off to him. If you have any suggestions or corrections, please contact him on: nigel.sandra@btinternet.com

A community minibus service is also proposed for Lane End and there will be a questionnaire about this in the next issue.

Route 28 in red Route 32 in green

Bus times from Lane End to High Wycombe

Mon to Fri 6.57am 7.22 **8.05 (8.17 non school days)** 8.53 **9.14** 10.02
11.02 **11.03** 12.02pm 1.02 **1.03** 2.02 3.02 **3.33** 5.45 **7.11pm** **8.11** **9.10**
10.10

Saturday 7.55am 9.02 then hourly till 4.02pm then **7.11pm** **8.11** **9.10**
10.10

Sunday Vale Travel buses 10.22am 12.22pm 2.04pm 3.44pm 5.44pm

Bus times from High Wycombe to Lane End

Mon - Fri **7.00am** **8.45** 9.40 10.40 **10.45** 11.40 12.40pm **12.45** 1.40pm
2.40 **3.15pm** **3.55** 5.20 **5.30** 6.10 **6.40pm** **7.40** **8.40** **9.40** **10.40**

Saturday 9.40am then hourly till 3.40pm 5.40pm **6.40pm** **7.40** **8.40** **9.40**
10.40

Sunday Vale Travel buses 9.50am 11.50 1.50pm 3.50 5.35pm

Cadmore End services (no buses on Saturdays)

Mon - Fri to H W 7.59am 9.08 1.07pm **From H W** 7.00am 12.45pm
3.55pm 5.30pm

Sunday Vale Travel buses. Times from Cadmore End 10.15am 12.15
2.08pm 3.48 5.53pm

Lane End Primary School trip to Saint-Pierre d'Oléron with the Twinning Association

Lane End Parish Council donated funds to allow children from Lane End Primary School to visit Saint-Pierre d'Oléron. The school has informed us that the trip was a great success.

The parish council was delighted the event went so well and would like to congratulate everyone who organised it and took part.

Planning Applications

All planning applications for the Parish can be found on the Lane End Parish Council website -

www.laneendparishcouncil.org.uk

Upcoming Parish Council Meetings

At 7.30pm in the Sycamore Room of the Lane End Village Hall
Monday 1st September
Monday 6th October
Monday 3rd November
Monday 1st December

All Parish Council meetings are open to the public and we would welcome you to join us.

Would you like to make a difference? Would you like to be a Parish Councillor?

If you would like more information of joining the Parish Council please contact Hayley Glasgow, Parish Clerk on 01494 437111.

The Parish Council is your first point of call for any issues that concern you to do with Lane End, Cadmore End, Wheeler End, Bolter End and Moor End.

We are here to help.

Contact your Parish Clerk Hayley Glasgow on:

01494 437111 or
clerk@laneendparishcouncil.org

Big news about our clerk over the page...



Our very own parish clerk, Hayley Glasgow, has won Clerk of the Year!

The Society of Local Council Clerks (SLCC) is the professional body for local council clerks. Its membership is steadily growing and now represents clerks to over 4500 councils in the UK.

The SLCC represents over 160 Councils in the Bucks area. Each year the SLCC asks for nominations for 'Clerk of the Year' 2014. This year the SLCC received a particularly high amount of strong nominations, which makes winning the award an especially notable achievement by Hayley.

Lane End Parish Council is delighted at the much-deserved award and wish her many congratulations.

Wanted

Stamp collections/albums

Especially British and Colonial Victorian period

Anything postal considered

Please phone Mike on

07527 538863



disease in humans and animals can cause fever, other flu like symptoms, joint problems, neurological problems and heart problems. Luckily the infection can be treated effectively with antibiotics.

How to safely remove a tick

When removing a tick it is important not to leave the head or mouth-parts in the animal's skin. The easiest method is to use a tick removal tool. These tools allow you to twist the tick free of the skin. The tick must not be pulled out!

Tick Prevention

To prevent ticks and fleas in dogs you can use a spot treatment that lasts for 4 weeks or special, impregnated collars. Both these products are available at Cherry Tree Vets.



D.J. MACLEOD

FORESTRY, FENCING AND ESTATE CONTRACTORS

Supplier of quality seasoned firewood

Tree and hedge planting, surgery, felling, maintenance, grass cutting and scrub clearance

All types of fencing and gates

Supplier of wood chippings

Telephone 01494 882901

Mobile 07850 724023

www.donlogs.com

Email: djmac@globalnet.co.uk

Cedar Cottage
Parmoor

Henley-on Thames RG9 6NN

Ask the: Vet

with Clare Hamilton 



The recent warm, wet weather has brought an outbreak of ticks. Ticks cannot jump or fly onto their host, but will wait on a leaf or piece of grass with hooked forelegs outstretched until an animal brushes past that it can climb aboard.

When the tick attaches to the host by its feeding tube it releases saliva that has anaesthetic properties. Undisturbed, a tick may feed for days, its body swelling with blood. Once en-

gorged, the tick will let go.

Ticks can carry diseases in their saliva such as Lyme disease. Lyme disease can be transmitted to humans and dogs. In 70% of human cases an infected tick can cause an uncomfortable, bull's eye rash.

If your animal becomes unwell or develops a swelling or rash around a tick, or even if you have trouble removing the tick, please call into Cherry Tree for assistance. Lyme



CHIMNEY SWEEP Ivan Staines

Prompt-Clean-Reliable
Full Brush & Vacuum Sweep
Fully insured
All types of pots and cowls fitted

Tel: 01844 212382

The lowdown

Lane End Conservation Group

Report by Jane Osborn

Following the very wet winter, the past few months have seen a rapid increase in the growth of hedges, grasses and ferns along our footpaths and other areas around the village. Unfortunately, we have struggled to undertake all the extra work needed. We have also struggled with the low number of helpers which has limited the work undertaken. However, with a few loyal helpers we have achieved good results. In July, just four people made the four fields path walkable again by cutting back the stinging nettles etc. We would like to thank all those people who have attended our working mornings.

As mentioned in the last edition of Clarion, the Committee has not changed its mind about the Group's days being numbered. If you are interested in finding out more about how to join/help the Group, please contact either Margaret Adnitt (Treasurer - 882609/ margaret.adnitt@gmail.com) or Jane Osborn (Sec. - 881641 / jane.osborn@virgin.net). This the last chance to save Lane End Conservation Group.

little explorers nursery

Choosing the right nursery for your child is essential. At Little Explorers Nursery we treat each child as an individual, nurturing their talent, skills and confidence so that they can flourish. We have a bright and spacious setting. Inside, there's sand and water, messy play, painting and crafts, cooking, role play and music. There are quiet areas too for reading, computers and maths. Outside, the Nursery has two play areas: one for riding bikes and scooters and another where we enjoy playing, climbing and digging, growing fruit and vegetables and exploring the log pile for mini beasts!

The Nursery is led by a qualified teacher supported by experienced and qualified staff. Full or part-time places for rising 3 and 4 year olds. Call us to arrange a visit on 01494 881169 or email us at office@laneendprimary.co.uk

"Children make a good start in the Early Years Foundation Stage because of the good provision." OFSTED March 2012

Little Explorers Nursery at
Lane End Primary School
Edmonds Road, Lane End
Bucks HP14 3EJ



Safety and Security

Burglaries

Turville Heath, 4 July 2014, 09:00-16:00

Hambleden, 9 July 2014, 10:30-11:00. Suspect has been arrested

Lane End, 23 - 25th July 2014

Anti-social behaviour

Reports of quad bikes, off road bikes and mini motos being used in an anti social manner have been on the increase, in particular in the area of Lane End. The team will be targeting this issue and where possible seizing any vehicles belonging to offending parties.

Appeal for info

Please come forward if you have information about an incident of grievous bodily harm and affray in Stokenchurch. The incident occurred around midnight on Sunday 27 July. A group of about 10 people were crossing the road outside the Kings Hotel car park when an altercation broke out between the group and two members of the public, who were already in the car park.

The victim, a 48-year-old man, was pulled to the floor and assaulted.

Some of the offenders are white, others mixed race, and aged between 16 and 20 years-old. If you have any information please contact the investigating officer, Det Con Joanne Castle via the Thames Valley Police Enquiry Centre on 101.

Thames Valley Alerts

Sign up to Thames Valley Alerts and be among the first to find out about crimes in your area. You can filter the messages to only receive the alerts about the subjects you're interested in. To sign up, visit www.thamesvalleyalert.co.uk

Road Safety weeks

Next road safety week (formerly known as speed awareness week) is in Ibstone, Medmenham, Hambleden, Skirmet and Fingest in the week beginning 15 September.

Our Neighbourhood Team

We are in Marlow South West Rural and our officers are:

PC 2272 Danny O' Driscoll
PC 2719 Claire Marchant
PCSO 9923 Penny Ling
PCSO 8332 Steve Williams
PCSO 8667 Ben Rackstraw.

Dave's Mystery Plant:

I am a small shrub with blue grey aromatic leaves and flowers of varying shades of blue purple & lilac. I am an old English classic often used along pathways, or in groups in borders or parterres of country gardens. I'm widely used in cottage gardens and the bees love me.

Essential oil from my flowers was used in hospitals during the First World War to soothe insect bites, burns and headaches.

Bunches of my flowers repel insects and in pillows, the dried buds aid sleep and relaxation.

What's my name?

Answer: lavender



ORNAMENTAL LANDSCAPES

~Former Royal Horticulturalist~

Is available for

Garden Design, Build, & Maintenance Projects

Dave Dunbar

(National Diploma in Amenity Horticulture)

Large or small jobs undertaken including.....

Patios, Walls, Paths, Decking, Turfing, Planting, Hedge Cutting & Fencing, Ponds & Waterfeatures, Pruning & Tree Surgery,

Re-vamping unsightly borders, etc.

Please view our photos on our website

www.ornamental-landscapes.co.uk

01494-883846 or 07833-684065

Lane End and District Horticultural Society

Report by Katy Dunn

The legendary Lane End Horticultural Show was held this year on 16 August with a wonderful array of home-grown fruit, veg and flowers and some delicious-looking baking.

Competition was as fierce as ever, particularly in the allotment category with Eddie Richardson pipping his friend Ian Holliman to the Champion Cup. 'He has the next door allotment and we have a cup of tea but there's always a competition,' says Eddie.



*Allotment Champion Cup winner
Eddie, with grandson Aaron and Ian*

Other winners included Yvonne Hanson with an incredible five trophies, Elizabeth Plumridge, John Hilborne, Mrs S Woodward and John Young with two apiece, along with Gwen Beer, Valerie Martin and Mrs Silvey.



The winners of the children's categories were Bonnie Hopkins for the under 9s and Evie Cabbage for the 9-13 category. Evie (pictured below) also won the Victoria Trophy for the best overall children's exhibit, but could have won for effort alone as she submitted 10 entries including a poem, cakes, photo, drawing, an animal made of veg, two flower arrangements and a handicraft. She puts us to shame!



Frieth Cricket Club

Report by Ben Smiley

Frieth Cricket Club's season has continued apace with some superb team and individual performances resulting in victories for both League (Sat) and Friendly (Sun) sides.

Our Junior Section coaching has been a huge success, with 26 young players signing up and being introduced to cricket over eight Sunday mornings this summer. In partnership with Bucks Cricket Board and Chance to Shine, a charity that

works to develop cricket in state schools, we have been able to provide extra coaching to Frieth School and expect to be able to expand our support of cricket to other local schools next summer. To find out more about our Junior Section, please get in touch: friethcricket@btinternet.com.

Off the field, work has begun on the Club's new pavilion and whilst we wait for some of the engineering details to be confirmed by the powers that be, we are delighted to launch the Frieth Cricket Club New Pavilion Fund. There will be fundraising events throughout the year, includ-



Reliable and professional service for 12 years in the local community

Free estimates and competitive prices

City and Guilds Qualified

Full insured, all work guaranteed

Internal/external doors
New windows fitted
Kitchen and bedrooms
Solid wood and laminate floors
Staircase refurbishment

Call Duncan Frost
01494 880540 /
07811 596 304
aspectdf@aol.com



and sweetcorn look the best they have for years!

Chilli peppers, runner beans, main crop potatoes, beetroot, carrots, courgettes and onions....you name it, everything has been growing like mad for the last few weeks.

September is the end of summer, hopefully an Indian summer will prevail and the harvesting can continue in the dry. It helps to lift the potatoes and onions and leave them for a few hours in the sun to harden their skins before storing them away.

Now is the time I sow Spring onions (White Lisbon) and this is also when I plant my lettuce to avoid them bolting in the summer heat. Autumn planting onions will be set out at the

end of the month and green manure used in the empty beds to improve the soil for next year.

Hopefully, all going well, this will be the month that I finally get to start my new plot. I am going to dedicate this to fruit bushes and permanent raised beds. With winter coming and the weeds finally dying back it may give me a chance to gain the upper hand again – for a few months anyway

Favourites:

Ceratostigma willmottianum. This is a shrub with blue flowers that bloom any time between July and September. It is commonly known as the hardy plumbago, although it is not actually fully hardy.

During the winter cold weather stems can die back, and have to be cut back hard to produce the new stems, this does however keep the bush small! The dainty flowers are like blue phlox, and this is a great small shrub for colour late in the year.



Gardening

with Dave Dunbar 



Prep for next year

After a hot and dry summer with many lawns turning a whiter shade of pale, and stunted shrubs struggling to find water, I'm sure if they haven't already, the rains will surely come!

Seasonal Top Tips:

Get ready to start planting bulbs, October is good, November OK but don't leave it much later. Don't forget many bulbs don't like having their feet in water over winter, so ideally the ground should be dug deep enough for water to drain away below the bulb, and if possible put a little grit in the bottom of the hole for more drainage. Other than that, fill a few containers with bulbs, place them near entrances where easily seen, oh and squirrels love tulip bulbs so watch out!

Now's the time to give the lawn a good autumn feed. A high nutrient mix will promote strong root growth to strengthen and prepare the lawn for the winter, and consequently

continue to improve next year's results.

It is also a good time to scarify. You can hire small petrol machines that do the job easily, but be prepared for how much moss and thatch comes out. Scarifying helps remove excess moss and dead grass to help the lawn 'breathe'. It can put slits in the soil surface to allow water to drain better instead of running off, and can induce grasses to shoot lower down, but be careful not to set it too deep, or it can rip out the lot!

Nath's allotment

It's Harvest time!

Well, so far, the hoeing that I mentioned in the June edition has paid off. Although I am struggling to get my Brassicas planted (work, work, work). As I write up this piece at the beginning of August I have not even managed to prepare the bed, although the rest of the plot is in a pretty good shape. My runner beans

ing the President's Game on 7 Sept, annual Race Night on 4 Oct, and Christmas Dinner at St Katharine's, Parmoor, on 28 Nov.



For more information on how you can get involved as a player, volunteer or spectator, email friethcricket@btinternet.com or ring Ben Smiley on 07879 855353. Hope to see you at Frieth Cricket Club very soon!

Lane End OPAG

Report by Jane Osborn

Despite being the 'grey' generation, most of us are still interested in the world - people, places and 'things'. If that describes you, come along to Lane End OPAG which meets on the first Thursday of each month at 2pm in LEYCC - for a talk, interesting people and a cup of tea.

Even better, if you feel you have a talk within you which fellow members might enjoy, or to find out more, contact Jane Osborn on 881641/ jane.osborn@virgin.net

OPENING
SEPT 2014



WIZKIDZ Afterschool Care

Wraparound school care

Family run, Ofsted approved childminders

Offering Breakfast Club before school and afterschool care

School pickup with free play, crafts, baking and homework before a healthy tea

For more information please visit our website:

Wizkidzafterschoolcare.co.uk

Call Caroline on 07712506980



The Twinning Association of St Pierre d'Oleron invited the Lane End Twinning Association and a team from Lane End Primary School to join them in this World Cup year for St Pierre FC's annual football competition, which included schools and junior football clubs in the region.

The newly formed mixed football team from Lane End Primary School travelled to the village's twin town, St Pierre Ile d'Oleron. The Lane End

Primary School football team was only started this year and the boys and girls are aged eight to 11. Many of them had never been abroad before but they travelled approximately 650 miles to represent England in a superb stadium with 25 French and German teams.

Headteacher Debbie Williams said: 'This is the first team we have had for some years. Taking part in an international competition in France

Great autumn evenings at The Prince Albert 'A little old fashioned pub with a big heart'



Fortnightly pub quiz • Occasional folk nights

Open all day!

Food served weekdays 12.15-14.30 and Sunday 12.30—15.00

Evening meals Friday and Saturday 19.00-21.30

The Prince Albert, Moors End, Frieth, Oxon, RG9 6PX. Tel 881683

Hambleden Valley Gardening Club

Report by Janet Collins

We had a very successful Plant Sale. This is an important day for us as it's one of our main fundraisers. Our visit to Babylon Nursery was very popular as we are able to buy healthy, locally grown plants at trade prices, very tempting! The downside was that the heavens opened up and we got a real soaking!

We had a lovely visit to a beautifully restored garden at The Manor House, Upton Grey. The garden was originally designed by Gertrude

Jekyll and the present owners were able to follow her original plans to faithfully restore the garden from the derelict state they found it in some 20 years ago. The contrast between her formal garden and her wild garden showed off the beautiful planting of the peonies and the abundance of rambling roses cascading over pergolas and arbour. We had blue skies and sunshine in which to soak up the magic and beauty of this special garden.

We have more visits to come over the summer and our new season of talks will start again in October so please look at the events page. New members are most welcome. Please call 01491 638690 or 01491 638691



WHITLER CONSTRUCTION LTD

ESTABLISHED FOR OVER 35 YEARS, WE PRIDE OURSELVES
ON HIGH QUALITY WORK AND A RELIABLE SERVICE

- EXTENSIONS
- NEW KITCHENS
- BATHROOMS
- HOUSE ALTERATIONS
- GENERAL MAINTENANCE OR REPAIRS

FROM YOUR INITIAL IDEA WE CAN GIVE YOU YOUR COMPLETE DREAM

FOR MORE INFORMATION AND ADVICE CONTACT

CHRIS BUTLER ON **07971 487 324**

7 ORCHARD ROW, BOLTER END LANE, WHEELER END, BUCKS HP14 3ND

TEL 01494 882852 Email wconstruct@hotmail.com

When that happens, farmers still have to sell the grain that they have grown, and so will take a lower price to clear it even if that lower price is less than cost of production. However, another favourable factor this year will be a saving on the cost of fuel oil and electricity for grain drying, since much of the grain in the early part of harvest came in from the field sufficiently dry, at 13% to 14% moisture content, so that no further drying was necessary.

The straw from most of our wheat crops has been returned to the field to be incorporated in the soil as organic matter for the next crop. This is achieved by rotating blades which chop the straw into lengths of two or three inches before it leaves the rear end of the combine harvester, and then a fan spreads it evenly over the thirty feet wide cutting width of the combine header.

Our combine harvester has been achieving an output of around fifty tonnes per hour, and on the best day we were able to harvest 600 tonnes. This has meant no time to waste in carting the grain back from the harvest field to the grain stores in the trailers carrying 14 to 16 tonnes per load.

Some readers of The Clarion may remember seeing one of our tractors with a flat tyre and a trailer behind it

parked in the village outside the Golden Palace and McColl's paper shop and store in August.

Many thanks to those who were patient over any disruption caused by this breakdown while the tyre was repaired. But that was not quite the end of the story, since tractor tyres are made to flex to grip better on fieldwork – but internally fitted repair patches do not flex quite so much.

So unfortunately the tyre repair did not last and we had to replace all four tyres on that tractor. The quotations for the cost of the four tyres varied from £13,000 plus VAT for the most expensive brand down to £5,000 plus vat for supplying the four Indian BKT Agrimax tyres which are shown in the photo being fitted onto the John Deere tractor back in our farm workshop.

Bryan and Alison Edgley started farming Kensham Farm at Cadmore End in 1955.

Their son, Charlie Edgley, manages the arable crops for the family partnership—around 2,300 acres, mainly of milling wheat, centred on Kensham Farm but including rented fields between West Wycombe, Sands, Booker, Fingest and Lane End.

www.kenshamfarms.com



was a huge opportunity. The children were fantastic from the moment they left. They demonstrated their skills and they showed incredible determination and tenacity. They held their heads up high. Not only did they learn about teamwork, they also developed their communication skills by making new friends with the French teams which was lovely to see. It was a fantastic experience for all of us.'

The competition at the weekend began with a special game on the Friday between Lane End Primary and St Pierre FC U11. This was followed by a knockout tournament on the Saturday with other teams that had played together for a long time and were all 10 and 11-years-old. Lane End played four French teams in the earlier stages and came 14th out of the 26 teams, winning a category cup and banner. They were one of the few teams to score a goal against St Pierre FC who were the eventual champions.

While staying on the island the pupils, parents and staff were given a tour of the island to see the lighthouse, oyster farming and the huge fish market.

Phil Mann, chairman of the Lane End Twinning Association, said: 'Ever since Lane End established

links with St Pierre, it has been the association's wish to facilitate a trip for Lane End Primary School to the island. The success of this event is beyond our wildest dreams.'

The trip was made possible by generous support from Buckinghamshire County and Lane End Parish councils, the school, parents and village businesses. This included The Grouse and Ale, who provided a picnic for the party on the journey.

Lane End Twinning Association is very grateful for these financial contributions without which this fantastic cultural link between Lane End and St Pierre would never have come about.



Letter from Oleron

Report by Tim Cherry

It is high summer and the fields are noisy with the roar of the local combine harvester (he hires out to all the local farmers, and evidently does very well). It is very hot; we have seen 36 degrees in the past weeks.

The roads are crowded; I never saw so many camper vans and cars with roof boxes, loaded with bikes and children, all heading over to Oleron. The beaches are packed, and everyone seems to be enjoying themselves; the local shops are doing a roaring trade. The supermarkets are

very crowded, and even open through lunchtime now. Much local produce, especially fish and seafood is being bought.

Barbecues are also popular, with superb French sausages - I like Toulouse sausage best - but also fresh sardines and other fish. When the fire has settled to hot ash, a *camembert* cheese, whole in its wooden case (but without the greaseproof wrapper) goes well. It melts in the middle to readily and deliciously accept fresh bread dunked in it. Lovely with a glass of Bordeaux red, or maybe rose.

It is still good weather here until end October - so why not come see us?



SERVICES

- Airport & Seaport transfers
- Local & National Travel
- Executive Travel
- Minibus for large groups
- Document Delivery Service




24
HR

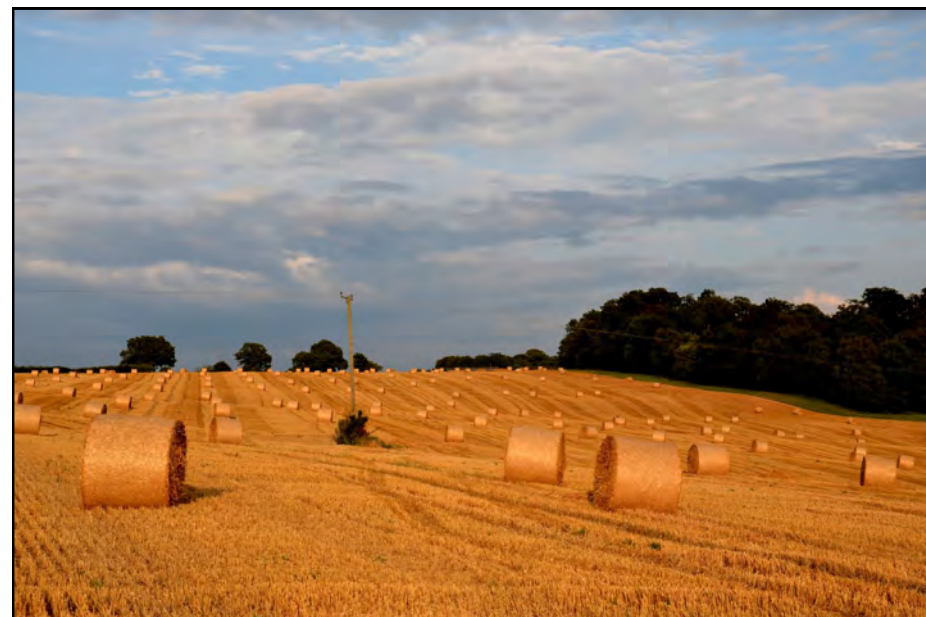
BOOK ONLINE:
www.yellowcarshw.co.uk







01494 44 44 02



fields we disconnected the straw chopping mechanism at the back of the combine harvester, to leave the straw in swathes.

We then sold it in the swathe for use by the cattle at Laceys Family Farm at Bolter End. It was baled and removed from the field straightaway. The importance of baling and carting the straw without delay is so that autumn cultivation can start straightaway in preparation for the next season's harvest, and for the livestock farmer, it is so that the straw can be gathered in before any rain which would spoil its quality.

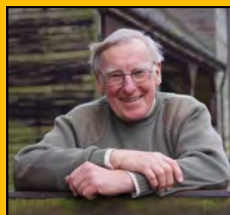
Our wheat harvest started on 27 July, and the excellent yields this year will partly counteract the fall in value per tonne of wheat on the world wide

market. It always seems surprising that a staple for making bread should have such volatile changes in value. Tables published in Farmers Weekly in August show a comparison of two year's prices for 'feeding quality' wheat to have varied from a high point of £214 per tonne in November 2013 to the present low point of £112 per tonne in July 2014. This variation is the result of the laws of supply and demand.

If the season for crop growth has been favourable both in this country and in other wheat producing countries, as it has been for harvest 2014, then the world's grain markets will judge that so much wheat is in store globally as to amount to a world wide over supply.

On the land

with Bryan Edgley 



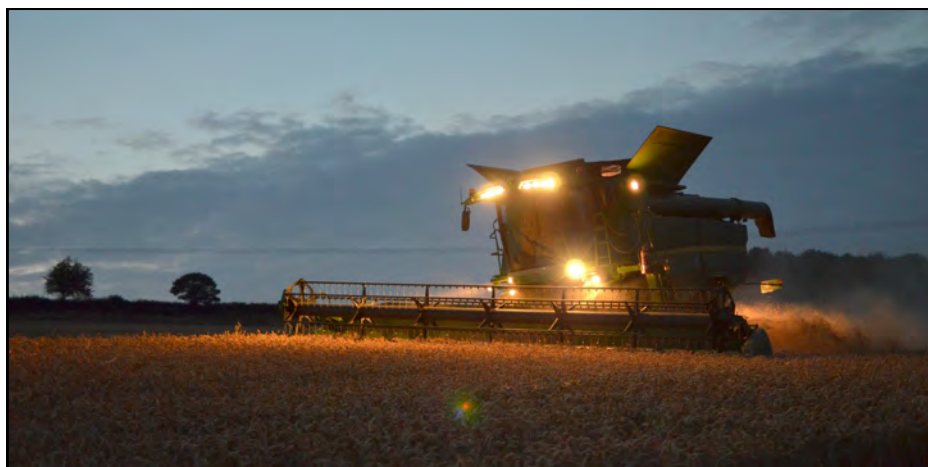
Harvest time!

September is a good time to review the past farming year and Michaelmas Day, 29 September, was traditionally the day when any change in tenancy or ownership of a farm took place.

The logical reason for this was that the cereal harvest and the main summer grazing season for livestock had ended, and the winter seeding for the following harvest, or the yarding of cattle for winter feeding, had not yet started. Most farms still use

Michaelmas as the end of the farm financial year for accounts purposes, although to suit modern computer systems it is generally delayed by one day to 30 September.

This year, the cereal harvest started earlier than in most years. Our combine harvester started cutting the winter barley crop on 15 July and completed it two days later. Barley straw has a useful feed value for cattle, as well as making good bedding for cattle yards, so for those



Staircases, Doors & Windows, Conservatories From Raymond Good (Joiners) Limited



Any bespoke joinery work undertaken - Designed, manufactured and installed



Raymond Good (Joiners) Limited is a specialist provider of joinery solutions catering for the new build, trade and domestic markets. Established in 1962 with over 50 years' experience, we offer an extensive range of products, and can advise on which we feel would best suit the individual's house, style and budget. Plus being a totally independent company, our advice is also completely unbiased!



Raymond Good (Joiners) Limited Myze Farm, Oxford Road, West Wycombe, HIGH WYCOMBE, HP14 3BA

Tel: 01494 881789 Fax: 01494 880789 Email: sales@raymondgood.co.uk

Call into our showroom – Open 9am to 4pm Monday to Friday.

Contact us today to discuss your wood, aluminium and PVCu product requirements



Phil Spackman Pest Control Services

Domestic, Commercial & Agricultural
Insects & Bugs, Rodents & Birds
Moles & Wildlife Management.



Surveys & estimates free of charge
Maintenance contracts available
Fully Insured & BPCA Member

For a fast, discreet response and a dedicated, professional service



**Tel: 07947 819554
01494 528240**



Lane End Youth and Community Centre

Report by Emma Savory

LEYCC—10 years old!

What an amazing achievement. To help us to celebrate the last decade, we are inviting the whole of Lane End to come to a 'Community Fun Day' on **SUNDAY 7 SEPTEMBER 11am-3pm**. There will be plenty to offer for adults and kids including; a go-kart track, gladiator jousting, rodeo, laser dome, bouncy castle and lots more.

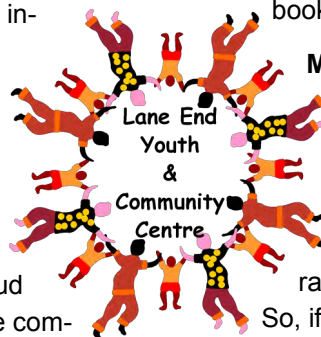
As a self-funded, registered charity, we're proud to open our doors to the community on a daily basis. However we feel the Centre could do with some new events and fundraising ideas; we also desperately need committee members. CAN YOU HELP? We want to provide YOU with workshops, events and classes that YOU really want, but we need your help to achieve this.

PLAYSCHEME – During August we held our busiest playscheme yet; forty children per day ranging from 5 – 12 yrs. There were lots of creative projects, mess, fun, laughter, new

friendships and more wonderful memories made. We will be running our scheme next year too, so don't miss out!

Information Coffee Morning -

LEYCC is hosting a coffee morning on **WEDNESDAY 8 OCTOBER 9-11am**. There will be various local organisations present, promoting all the wonderful clubs and organisations available to you in Lane End. Please come along for a coffee and a chat, children are welcome, toys/books will be provided.



Meat Raffle - LEYCC holds a meat raffle **every two weeks** at The Chequers Inn, Wheeler End. Tickets cost £1 per strip or 6 strips for £5, and the raffle is drawn at 3.30pm. So, if you fancy a wander and a pint, or if you are looking for somewhere for a spot of Sunday lunch, then come along to The Chequers and support your local Community Centre. The next raffle is on **SUNDAY 21 SEPTEMBER**.

All money raised from the raffle helps to fund Computers @ the Centre, a **FREE** facility offering friendly advice and support for all your computer needs. Open every Thursday 11.30am-2pm at LEYCC.

Children's Bingo – The next family bingo session will be on **TUESDAY**

Village Hall. The pattern with instructions appeared in Woman's Realm HOME SEWING & KNITTING, summer 1967 – so timely!

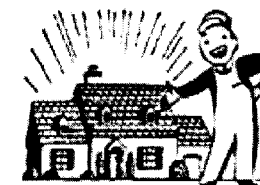
The original was made from coloured felt, which was suitable for family use, but we needed something tougher.

Well, children's clothes fastenings have moved on, and so have children's toys, but in case someone out there would like to make one for a youngster they know, who loves undoing buckles, buttons, bows, press-studs or zips and doing them up again, this is roughly what it looked like:-



IAN. J. BEASLEY PROPERTY MAINTENANCE HOME IMPROVEMENTS BUILDING SERVICES

- ◆ Small building projects
- ◆ Kitchen & Bathroom fitting
- ◆ Shower rooms & showers
- ◆ Wall & floor tiling
- ◆ Internal & external:
- ◆ Alterations
- ◆ Carpentry work
- ◆ Decorating



Over 35 Years experience

Contact: Ian

Tel: 01494 881100 Mobile: 07720 251320

Email: i.beasley@homecall.co.uk

I think to begin with we were granted enough funding to buy an A-frame for active play, plus paper, paints and brushes, and perhaps easels – the rest was up to us to create a happy playing and learning environment through our activities, stories, rhymes and songs.

It seems like a very old-fashioned piece of equipment nowadays, but a large flannelgraph board (like a big 'Fuzzy Felt' board) was useful for adding elements of a story bit by bit - for example adding the Little Wooden Horse's red saddle, green wheels and blue stripes piece by piece meant that the children heard the

words as they saw each part, increasing their oral vocabulary and 'reading-readiness'.

Of course, the illustrations had to be hand-made – just some of that 'pre-school stuff' going on unpaid and out of hours. I have many personal favourites amongst the stories we used, and am not surprised that some of them are still loved, and being sought online, or written about with nostalgia by former playgroup participants.

To help the children to master clothes-fastenings ready for school I made a teaching toy from leather scraps in time for our opening in the

28 OCTOBER at 1.30pm, £2.50 per child, lots of prizes to be won, tuck shop will be open too!


Drop In lunch – We are always on the lookout for help with the **Thursday lunch**, so if you would like to get involved in preparing and/or serving lunch once a month, please contact the Centre.

Facebook - Add 'Lane End Youth & Community Centre' on Facebook, and you will be among the first to find out about all our latest events!

The Centre is so versatile and can be used for many different events or

celebrations. We are very competitively priced and even offer a discount to Lane End residents. Pop into the Centre or call anytime to check availability and prices for private hire. We also have excellent facilities for business meetings or conferences. Please contact Emma Savory, Centre Manager for more information, see details below.

*Lane End Youth & Community Centre,
Edmonds Road, Lane End, HP14 3EJ
Tel: 01494 883878 / 07932 326046
Email: leycc@hotmail.co.uk
Charity Number: 1101360*



Frieth Pre-school

Freedom to be me, to explore who I can be

We are a pre-school for 2-5 year olds in the lovely village of Frieth, next to Frieth CEC School!

Opening times

Mon – Wed
8:40am to 3:30pm

Thurs and Fri
8:40am to 12:30pm

Lunch Club each day
11:40 to 12:30

We are open for mornings, afternoons and all-day sessions. To book a visit or register please contact

Donna or Kirstin:
Tel: 07928 186738
frieth-preschool@outlook.com
www.friethpreschool.co.uk

Recently received 'GOOD' from Ofsted!

JSJ ELECTRICAL SERVICES

Domestic, Industrial, Commercial Electrical Contractor for all your faults and improvements, over 30 years experience, trustworthy and reliable.

- Showers
- Rewires / extra sockets
- New Installations
- Storage heaters
- Security lighting
- Consumer unit upgrades
- Emergency call out



**Call John on 01494 882544 (Home)
07909698899 (Mobile)**

QUALITY SERVICE GUARANTEED

John Stanley Carr

100 years and counting

John Stanley Carr is celebrating his 100th birthday this year. He's been a resident of Lane End for 75 of those years and once ran a grocers shop in Lane End's Temperance Hotel.

He was born in Sands although his parents and grandparents were born at Ditchfield Common. He was one of nine children who remained close throughout their lives.

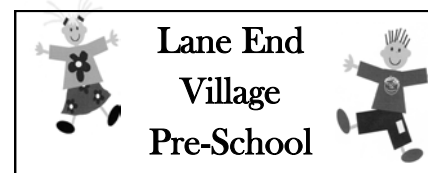
After leaving school in 1928, John started work as an apprentice grocer in High Wycombe. He met his wife Hannah, known as Nancy, in 1934 and married four years later. They had one daughter, Pauline, and their happy marriage lasted 62 years until Nancy's death in 2000.

Their married life began in Lane End where John worked for the local grocers Warren & Sons. He served six years in the RAF before he and



Nancy bought the Temperance Hotel and built up a thriving grocery business which supplied the surrounding villages with a free delivery service for more than 25 years.

Since his retirement, John has spent many happy hours in his garden at The Cottage on Handleton Common. Despite his failing eyesight, he enjoyed carpentry, oil painting and playing his Hammond organ.



Katy Dunn—It's always sad to lose a service from the village, especially one that's been going for 50 years. However, the farewell garden party in July for Lane End Village Pre-school was a wonderful celebration with former leaders, former attendees and current staff and children coming together for food and fun in the village hall.

My children went to the Pre-School and had the best time playing and learning with the wonderful staff. As I work in my garden office (next door to the village hall car park) I'm already missing the sound of the children playing, the laughter and the calls of 'Buy my ice cream, ice cream,' - an echo of my own children selling their imaginary cones from their 'kiosk' on the climbing frame.

I am not alone in wanting to thank Dorothy Harman who was leader for many years and kept the pre-school going through sheer determination long after she was supposed to have retired. When parent committee members were not forthcoming, she knew exactly who to target with her lethal charm so that we found ourselves operating as Chairs and

Treasurers without quite knowing how we'd got there! The children adored her and so do we. I'd say you can enjoy your retirement in peace now Dorothy, but I know she's never one to sit still for long!

Margaret Bolton—Sad though it is to see that Lane End Village Pre-School has closed, I must pay tribute to the succession of people who have kept it going for nearly 50 years (it was started in 1967). I was its leader for only a very short time, but having taken it into the Village Hall that year, after helping to start it in a private house, I can tell a little of its very early history:-

Having young children ourselves who we felt would benefit, it was parents who helped to form the play-groups at that time. We shared toys or books and supervised the children for very little monetary reward. There were rules and standards for play-groups to adhere to, of course, in addition to an inspection by the health visitor.

However, I was trained as a primary school teacher and had local helpers with knowledge of our village and its systems. Chief among them were Helen & Nobby Clark and Kath & Peter Philp, who will certainly be remembered by long term residents here. They were instrumental in getting Lane End Playgroup started.

club and read with the children) have offered incredible support and along with our fantastic team have helped Lane End Primary School feel like a very confident and successful place to be.

Our very positive Ofsted inspection was a welcome acknowledgement of our achievements as a school and has helped underpin our plans for the future which include expanding our Little Explorers Nursery to take two year olds from September 2014.

The academic year ended with a truly marvellous key stage 2 performance of the 'Pirates of the Curry Bean'. We were very grateful to Lane End Players who rigged stage lighting and helped in each of the performances.

Our Yr 6 trip to PGL Liddington in Wiltshire was a brilliant way for the children to wrap up their time with us at Lane End Primary School. The children took part in a thrilling range of activities from climbing vertical assault courses to fencing and



mountain biking.

In June, our football team went to St Pierre d'Oleron. We are incredibly grateful to the Lane End Twinning Association for making this possible; we had a fantastic time and the children will remember their experience for many years to come.

It doesn't stop for school holidays either. Myself and the assistant Headteacher, Tim Williams, are attempting the three peaks challenge to raise funds for the school library. If you would like to find out more or make a donation, please visit: www.make-a-donation.org/campaign/three-peaks-challenge

We have raised £1200 in total so far - every little helps! Thank you!

Lane End Primary School will be hosting an open morning for prospective parents and pupils on **1 October 2014**. If you would like to come along to visit our lovely school then please email us at office@laneendprimary.co.uk

Finally, I would like to thank our wonderful Chair of Governors Lilli May, who retired at the end of the summer term. Lilli has been a stalwart supporter of the school over many years and incredible partner for me since I joined Lane End Primary School. Thanks Lilli!

Debbie Williams, Headteacher

John now lives in the Ryevue Manor Care Home, visited often by his daughter, grandchildren and great grandchildren, who adore him

John is a kind, humorous man with a never give-up attitude who is always willing to help others. He says: 'I have been blessed with a very happy life, wonderful marriage and good health.'

Congratulations on your 100th birthday, John!



Joe Griffin TV AERIAL SERVICES

- **Poor Reception Solved** - Aerials repaired & supplied
- **TVs** - Hung on your wall for you. Also supplied & tuned
- **Extra TV Points** - For aerial and Sky (In HD!)
- **Sky TV** - Also Foreign Language TV

Call Marlow 01628 439115

Lane End Action Group

Report by Jil Runge

We have been working hard to start the process of providing our parish with new, regenerated playing field facilities. We have:

- Visited other parishes who have embarked on similar projects to get their advice.
- Prepared a draft business plan which we are now refining.
- Had meetings with architects and sports equipment companies.
- Started the process of researching grant funding.
- Attended workshops provided by Impact for Bucks for guidance on how to achieve our overall objectives.

AND MUCH MORE!

Please join us, your help would be very welcome. Contact:

marklockwood@fsmail.net / 07787 402636 (Chairman_

jilrunge@talktalk.net / 01494 881329 (Secretary).

Marlow Wolves

Report by Sam McKee

It has been the most successful season of the Wolves history so far. The youth American football programme that trains at Lane End Playing Fields on Saturdays from January to August is the number one programme in the UK right now for under 17s and has been since May.

All three of their teams are number 1 in their respective leagues and feature some of the finest talent in the country. The year so far has included a first Great Britain under 19 call up, league MVPs and national acclaim, all star team call ups and only three defeats from a total of 37 games.

FACT

All three Lane End American Football teams are No.1 in their leagues.

If you are a child who wants to play American Football in Great Britain there is no better place than Lane End village

(isn't that extraordinary?!)

performances and events throughout the term. Our Yr 3&4 pupils took part in a workshop with Garsington Opera and had the wonderful opportunity of attending the dress rehearsal for the main production in the Wormsley Estate. They took inspiration from this to create their own superb performance of the story of Jonah and the Whale at the annual Praise in the Park service in Marlow in June. The Yr 5&6 pupils also had a fantastic trip to remember when they set off for an adventure week in France.

July saw the traditional Summer Queen celebrations. The weather was perfect for the wonderful display of singing, dancing and performing. Our eldest pupils performed the traditional maypole and country dancing, whilst our younger pupils sang songs and performed poems, relating to the theme of Christianity.

Of course, the main event was the speeches given by our remarkable outgoing Head Girl and Head Boy, Aimee Markwell and Ollie Sage, who have performed their role with the maturity and responsibility. They then handed over the baton of 'challenge and responsibility' (two of our core values) to our incoming Head Girl and Head Boy, Evie Cubbage and Harry West.

In the last term Yr 6 travelled to Ox-



ford to take part in a Diocesan leavers service; Yrs 4, 5 & 6 gave a spectacular performance of 'The Wind in the Willows'; there was the annual whole school sports day; and the final leavers' service in St. John's Church, Frieth. It has been a wonderful term, thanks to the hard work and dedication of all the staff, governors, parents and, most importantly, the pupils. We wish our leaver's all the very best in their new adventures and look forward to September.

Jo Reid, Headteacher



What a wonderful year this has been! I am extremely proud of our children who have had a marvellous year. Academically, our children again delivered excellent and well-earned SATs results this year. Our teachers, governors and amazing volunteers (who run the breakfast

Schools



It's been another busy term at Cadmore End.

We performed the Y6 leavers play 'Let

Loose' about a school residential trip that didn't go according to plan. The parents and the rest of the school enjoyed the production and we shall be humming those catchy songs for some time! We wish the Year 6s lots of luck at their next schools.

Earlier in the term, the whole school enjoyed an adventure day in the woods next to school. We took part



in a variety of activities such as toasting marshmallows, making clay figures, a water challenge and den building. We were in mixed aged teams so it was a great chance for

the older and younger children to work together and help each other.

We also held a WW1 remembrance week. As part of this week the whole school went to the church in Cadmore End and planted some poppy seeds in the church yard.

Other great things we have done this term are sports day, Nazareth House won and my favourite race was the three legged. Steve Cole, the author of the 'Astrosaurs' books, came to talk to us. He was very funny and we all did some great writing after his visit. Finally I would like to say well done to the boys in class 4 who entered a Sumo Robot competition at Brookes University. They came second and won a great Lego Mind Storm kit for school. They were also on the TV and radio.

Lisa Fern, Headteacher



It has been an exciting and extremely productive summer term at Frieth School. Our terrifically talented pupils

have been involved in many different

The Cadets (under 12s) go to the BRITBOWL in Doncaster on 20 September undefeated for the second time in three years. The Youth flag team is the number 1 seed and are favourites to win their second straight national championship.

The Youth Contact team are number 1 and undefeated for the first time in team history with an impregnable defense. Three of their players have full scholarships to Bristol's American football college, which last year sent five players to the US to play university football on full international scholarships.

Dennis Burgess, the promising inside linebacker from the Royal

Grammar School became the first Wolf to be called up to the Great British Lions. This is the second time all three Marlow Wolves teams have qualified for the BRITBOWL, and it is not a reach to believe that they could all win the national championship.

Lane End's star players:

Jordan Barrass
Dan Ramsdale
Tyler Williams
Dan Cochrane

Check out Marlow Wolves on facebook and at www.pitchero.com/marlowwolves

For more information email sam_mckee@hotmail.co.uk

JHC ELECTRICAL SERVICES & Property Maintenance

James Clark

All types of Electrical works undertaken

Rewires, in/outside lights, down lighters, new fuse boards, additional sockets, security lighting, fault finding and CCTV City and Guilds/NICEIC Part P Qualified/IEE 17th Edition

All aspects of property maintenance carried out

Mob. 07720 598860 Tel/Fax. 01494 881766

The Dog House, 10 Elwes Road, Lane End, Bucks.

Email: jhcelectrical25@aol.com

www.jhcelectrical.co.uk



Fully Insured and all work Guaranteed.

Honest, Local, Reliable Tradesman. Established 12 years

A member of the Bucks County Council Trading Standards "Buy with Confidence Scheme"

CADMORE END FESTIVAL

6th & 7th September

Starts Saturday at 12 noon

Children's Cricket Sat 12-1.30pm all welcome

Village Cricket Match, Starts Sat 3pm



Games, Stalls, Refreshments, Music Bouncy Castle, Flower Displays Festival Evensong Sunday 6pm

at Cadmore End Church, Hall and Cricket Ground

For information contact Tanya Sims 01494 882336, tanya.sims@virginmedia.com

the threat of invasion finally evaporated on D-Day in June. As Major Gold recorded, 'The sands of time were running out' and on 3 December 1944 the Company paraded at Stokenchurch for the last time. For a time, the spirit of the Home Guard lived on in the Fingest Rifle Club, but it faded away, leaving mere memories which, as the Commanding Officer said 'no Home Guard will willingly forget'.

Royal British Legion

Report by Peter Jennings

On **Monday 8 Sept** we are running a coach trip to Claydon House near Buckingham. The National Trust property is running a special tribute to the centenary anniversary of the start of the First World War and has some interesting memorabilia. Included is an organised tour of the house. The coach leaves Lane End Village Hall at 9.30am and returns around 4pm. Tickets are approximately £9 for Members of National Trust and £16 for Non-Members (depending on numbers).

Please order tickets BEFORE 25 August from Bruce James 881079 or Andrew MacTavish 881948

On **Saturday 20 Sept** we're holding a QUIZ at Frieth Village Hall at 7.30pm. Light refreshments will be provided, but bring your own drinks. Tickets £8.50 from Bruce James 881079 or Andrew MacTavish 881948

Fri 17 Oct sees a talk by Bjorn Rose, teacher and Commanding Officer of the Combined Cadet Force at the Royal Grammar School, High Wycombe. This is at 7.30pm in Cadmore End Village Hall. Our previous Officer's Talks have been very well attended and informative and Bjorn is expected to cover 'Leadership in the Modern Army.

Tickets £6 (to include a drink and light refreshments) from Clifford Miller 01494 881645. Proceeds will go towards the 2014 Poppy Appeal.

On **Sat 8 Nov** Wycombe Brass Band will be staging a concert at Lane End Village Hall starting at 7.30pm. Refreshments are available, but bring your own drinks. This is in aid of the Poppy Appeal. Tickets are £8.50 from Bruce James 881079 or Andrew MacTavish 881948.

On **Sun 9 Nov** the Remembrance Parade will be held as usual at Lane End Village Hall at 11am, followed by a Service in the Church. (Parades also at Wheeler End Memorial at 10am and Cadmore End Church at 11am).

The Clayton Arms (now The Grouse & Ale).

The Company had the specific responsibilities of guarding the A40 at Stokenchurch and the Marlow - Henley road at Mill End, and denying the enemy the use of these two important routes. Members of the platoon worked all day, and manned observation points from dusk to dawn. The records indicate that E Company trained hard and was very efficient. It concentrated on wood fighting and many night exercises were run. By 1942 it had its own 300 yard rifle range at Fingest, though no one today knows where this was.

On 1 July 1940, a false alarm that 40 parachutists had landed near the Finings Wood water tower caused

the platoon to spend all day until 10pm searching the area. At mid-night they were called out to search Jubilee Wood for two other parachutists, who afterwards turned out to be two Welsh deserters. In November 1942, the whole of the Bux 4 Battalion took part in a day-long exercise against Bux 7 who were defending High Wycombe, and it was our E Company who successfully penetrated to the centre of the town. The whole operation took place in the pouring rain. It was not an easy life in the Home Guard, but the morale and camaraderie was high.

By 1944 E Company boasted rifles, Sten guns, Spigot mortars and a section of 2 pounder guns. It was clearly a very competent unit. But

Lane End Support Group

Report by Lo Smith

Lane End Support Group has been recently set up for parents and carers of children with special needs and disabilities. It is an informal group meeting on the second Thursday in the month from 9.30-11.30am in the Sure Start Children's Centre at Lane End Primary School.

The group offers friendship, help, advice and a chance to chat to other parents over a coffee.

There are many changes for young people in September including the Special Educational needs Code of Practice from birth to 25 years old, the Children and Families Act 2014, and Bucks Local Offer.

In October there will be a talk about Bucks Local Offer so you can find out what help to expect from BCC. I hope to arrange speakers to come at other times.

I look forward to seeing you and please contact me, Lorraine Smith if you need more information on 881147
lorrainesmith00@gmail.com.

Lane End Support Group

For parents and carers of children with special needs and disabilities

Come join us for friendship, help and advice at our coffee mornings on the second Thursday in the month at the Sure Start Childrens Centre, Lane End Primary School

Thursday 11 September 9.30-11.30am

Thursday 9 October 9.30-11.30am

Thursday 13 November 9.30-11.30am

Thursday 11 December 9.30-11.30am

Contact Lo Smith 881147 / lorrainesmith00@gmail.com



The Dog Wash
Cadmore End
www.thedogwashcadmoreend.co.uk

Pamper your pooch with our dog services:
Washing, de-matting, ear-cleaning, teeth-cleaning, anal glands & more.

Contact: 01494 881727 or email@thedogwashcadmoreend.co.uk

Lane End Scouts

Report by Ian Harris

It hardly seems possible that 12 months ago I started writing updates of our Scouting activities for the Clarion with the idea of raising the profile of Scouting within the community.

In that time we have seen massive growth within the Group, year on year our figures are 23% up across the age groups we offer, we also have a waiting list of young people wanting to join in our adventure.

This is great news on one front as it clearly shows that the activities and programs we offer are desirable to a wide range of young people. On the other side of the coin it highlights the continued struggle we have for regular adult volunteers who are willing to come forwards to help lead within our well supported team.

We have started the building project at the rear of our Headquarters, which will transform an area of wasteland into an all-weather outdoor activity area, alongside a secure grassed camping facility that opens up an opportunity for nights away activities to our members. We

Prisclean

Domestic & Commercial Cleaning Services

We also offer Carpet Cleaning, Garden Tidy,
Pre/End Tenancy Cleaning and One-off Cleans.

Friendly Local Service / Competitive Prices / Fully Insured

Tel: 01494 882038 Mobile: 07743 491814

Visit: www.prisclean.co.uk Email: info@prisclean.co.uk

Bux 4

The 4th battalion of the Bucks Home Guard

Report by Andrew MacTavish

The centenary of the start of the First World War is on everyone's mind due to media attention, and if anyone has any information about Lane End's participation at that time, please do get in touch (katyjdunn@btinternet.com/ 883883). However, it was in the Second World War that the district of Lane End became threatened with invasion and Andrew MacTavish describes how our boys rose to the occasion.

Everyone laughs at the 'Dad's Army' series today, but there was little to laugh at when the Home Guard were defending Britain in the Second World War. The threat of invasion was very real. Buckinghamshire had seven battalions of Home Guard, and the 4th Battalion was our local one. It covered a triangle of 70 square miles with the corners at Haddenhan, Hambleden and Wooburn (omitting High Wycombe, which had the

7th battalion). 'Bux 4' was the shoulder title on the uniforms and the famous black cross of the Bucks Battalion was the cap badge.

There were five companies in the 4th Battalion, and 'E' Company (The Stokenchurch Company) had its headquarters at Manor Farm, Fingest. It had a strength of 400 men and was commanded by Major N Gold with Captain A D Chater of the Mill House, Turville as his second in command. The Signals Officer was

Lt A F V Biggs of Zalma, Lane End, and the Intelligence Officer was Lt R G Plowman of Witham House, Bolter End, whose wife, Ruth, now lives in Lane End (aged 102).

E Company had five platoons, of which 4 Platoon, commanded by Lt F V Simmons, was based at Lane End. The HQ was at Court Farm, Lane End which was the home of the second in Command, Lt W J East. Battle HQ was



The Window Doctor

CARE & REPAIR FOR ALL YOUR UPVC & ALUMINIUM WINDOW & DOOR PROBLEMS

- Replacement of broken down sealed units
- misting up inside glass
- Adjust front & back doors that do not shut
- New handles, hinges and door locks
- Replacement of patio door wheels
- New security handles with keys
- New door panels and cat flaps
- New Georgian style or leaded style sealed units
- All Insurance work • Burglary damage • Servicing

PLUS INSTALLATIONS OF NEW UPVC WINDOWS & DOORS

Call us for a FREE Survey and Quotation,
No call out charge

FENSA
Registered Company

Family Friendly Established Business
Cowling & Co.

Mobile: 07860 435742
Tel/Fax: 01494 483567
email: [windowdoctor@cowling.plus.com](mailto>windowdoctor@cowling.plus.com)
www.windowdoctor.co.uk





Plumbing ▶ Heating ▶ Bathroom

Gas Boiler – Service/Repair
Plumbing – Taps/Leaks
Heating – Radiators/Controls
Bathroom – Taps/Showers

Local Friendly Service
Call Paul

t: 01494 482176 m: 07883 341496



owe a great many thanks to Red Kite and Bucks Community Foundation for the grants they have awarded us to assist in this project.

Equally, Jamie Oliver has donated us a wood fired oven from his extensive range and it is brilliant. All three sections have experienced making and cooking pizzas in this oven which throws perfect pizzas out at an alarmingly quick rate. The oven will be incorporated into the finished activity area.

Our activities have ranged from Scout Survival camps sleeping under hand-made shelters, to Beaver Scout visits to the fire station, along with Cub Scouts enjoying an action filled fun day at Aylesbury Rugby club. We attended the village Fete and demonstrated friction fire lighting and entertained with a peg gun shooting arcade, all of which gained us another six young people into the group as a result.

I wrote a piece about people becoming 'somebodies' and helping out in any way they can with our activities. Recently we have had a local archaeologist/geologist spend two weeks showing the Scout Troop some pretty amazing fossils and artefacts from near and far, a session that held the Scouts transfixed.

(There you go Ed, proof the Clarion is read locally and brings results!)

We are it seems, a victim of our own success. Our dedicated team of brilliant leaders deliver well balanced programs, in an environment that challenges the young people and stretches their imagination and teaches them practical skills not featured in schools or Xbox games. Yet our growth spurt may be stalled and young people will miss out, due to a lack of volunteers.

We are in need of additional support, we really need people to get involved, to offer us use of their skills, to help us fix various things, to help us decorate and maintain the interior of our beautiful building, to help us lead in the World's largest Youth Organisation.

If you think you have something to offer us, or want to get involved with the most personally rewarding organisation I have ever had the pleasure to represent, then please do not hesitate to give me a call or to send me an email.

Ian Harris, Group Scout Leader:
iphco@btopenworld.com

Lane End Scouts and Guides
Registered Charity 308008

Contact Ian Harris
iphco@btopenworld.com



Milk Men

with Will Lacey 



More girls please!

So far the summer has gone pretty well for the farm, the corn crops did well and have all been harvested early so this frees some time up for me to do some maintenance jobs around the farm.

One job is to rearrange our calf pens. We have invested in some new 'portable' sheds which will allow us to hopefully make calf rearing a bit easier for us this winter. Every cow in the herd ideally has one calf a year. All the Guernsey girl calves are kept to join the milking herd in the future and the boys are reared to go to market.

Common sense would suggest that for every 100 calves born roughly 50 would be boys and 50 girls, however things don't always go to plan and for the last couple of years the boys have far out-numbered the girls, resulting in us not having enough heifers to join the milking herd this year.

With enough feed and space to keep

more cows, we have had to go out and buy heifers in from another farm to fill the gap. This is a big decision for us because we have not brought in cows on this farm for more than 20 years.

There are numerous benefits of not buying in cows from other herds, as by rearing our own heifer calves we know the full history of each of our animals and how they like to be treated. Also, the high quality of the animals that we want to breed are not always easily available.

We did manage to find some good quality heifers on the Isle of Wight.



Ask the: plumber

with Bill Blake 



Bill, I've got a rushing water noise under the sink when I've no taps open. What could it be?

Something, somewhere, has failed.

I could probably point you straight to the problem but first we have to rule out all possibilities. First of all, check that all the taps are turned off in the house. Check that none of the toilets or the loft tanks are overflowing.

Then, when you've checked that nothing in the house is overflowing or running, and you still hear water flowing in the pipes, the chances are that your service pipe has failed.

This is the pipe between the stopcock in the house and the stopcock in the street and it runs under your garden or driveway...and it's all yours. It's very expensive to replace so my suggestion is that if you don't have any insurance on it you might consider getting some. I've seen two main service pipe failures in the last month which has focused the mind. And, no, I don't have any relationships with insurance providers!

Bill Blake, Plumber

Your friendly, trustworthy and house-trained' local plumber

Happy to take on all your household plumbing tasks, from mending a dripping tap to installing your new bathroom.

No callout charge, No VAT



Phone: 07762 807767

Based in Wheeler End
City & Guilds Qualified

2. Footpath Blitz

Meeting one Saturday morning a month to help clear specific footpath problem areas.

3. Rapid Response Group

A group of people willing to be contacted in an emergency to help clear an overgrown footpath, fallen branch or small tree.

Many of us love to roam our network of footpaths but they don't clear themselves so.....lets keep them open!

Please contact me

Margaret Adnitt

882609/ margaret.adnitt@gmail.com



Join us for a fun children's trail on Moorend Common

Sunday 14 Sept, any time between 2-4pm

Nature walk, bug hunting, woodland art, den-building

**Park along Fingest road, meet by the Prince Albert
Children must be accompanied by an adult. Bring wellies!**

My uncle, Gideon went to check them out and once he was happy and a price agreed we went to collect them.

When we got the newcomers back to the farm we kept them in isolation for a month to ensure they were free of any diseases they could pass on to our cows. After this quarantine time we began to integrate them into our own herd.

The first newcomer calved last week to another boy calf, but hopefully the next five will all have strong girl calves!



**FRESH
GUERNSEY MILK & CREAM**
FROM YOUR LOCAL DAIRY

**LACEYS
FAMILY FARM**



AVAILABLE FROM SELECTED LOCAL STORES,
OUR FARM SHOP OR HOME DELIVERY

CONTACT US FOR MORE INFORMATION:
LACEYS FAMILY FARM, BOLTER END FARM, LANE END, BUCKS. HP14 3LP
TEL/FAX: 01494 881 979 WWW.LACEYSFAMILYFARM.CO.UK

great
taste

GOLD MEDAL WINNERS
FOR WHOLE MILK
AND DOUBLE CREAM

Your day by day
guide to local
meetings, clubs
and events



What's On?

To include your event or group meeting (free) email: katyjdunn@btinternet.com
Please also be sure to inform me of any changes

Mondays

Regulars

French Beginners classes—9.45-11.15 La Cabane at Samedi in Lane End. Tel Denise 881919

Simply Walk—10am Meet Lane End Playing Field's car park. Walk and chat for 1-2 hours

LEOPAG (50+)—10.30-12.30am coffee pop in LEYCC, Edmonds Road, Lane End. Tel: 883878

Gentle Exercise for over 60s—2-3pm LEYCC

Baby Welfare Clinic—2-4pm, SureStart Centre, Lane End Primary School

French refresh and extend classes—12.30-2pm La Cabane at Samedi in Lane End. Tel Denise 881919

The Tree—lunch and soft drink offer all week £5.99 per person, 12-5pm

Lane End Parish Council Meeting—First Monday of the month, 7.30 in Lane End Village Hall, all welcome

Lane End Evening WI—Last Monday of the month at 8pm in Lane End Village Hall

Pilates with Lauren—7-8pm LEYCC £50 for 6 week course. Tel 07709 430634

Bridge Club—7.30pm Lane End Village Hall

Events

8 Sept—Coach trip to Claydon House with RBL. Coach leaves Lane End 9.30am. Tel Andrew MacTavish 881948 (see p39 for details)

Email: katyjdunn@btinternet.com and **share** here any local photos, wildlife stories or interesting nature encounters...

light brown, of which one to three usually hatch after 34 days. The young birds fledge in about six to seven weeks and will remain with their parents for a further week to ten days.

Red kites mainly scavenge on dead animals, but are opportunistic hunters, capable of killing small animals. They will feed on chicks, small mammals and invertebrates such as beetles and earthworms.

The belief that kites killed lambs and game birds led to their widespread persecution in the past. In fact, kites pose no threat to sheep farming or game rearing, though they will thrive on dead lambs and pheasants.

A kite's territory varies depending on the abundance of food. Where food is plentiful, large numbers of kites can be found living together.

The red kite reintroduction has proved to be one of the greatest conservation success stories of the 20th century.



Footpaths report

Report by Margaret Adnitt

After a mild winter, a wet spring and now a hot summer, bramble, nettle and bracken growth has taken off in a big way. As Chiltern Society Local Footpath rep, it has been, and is, very difficult to keep the almost 25 miles of Lane End footpaths clear for walkers to use comfortably. One bonus is that the wild raspberries have been prolific - they are sweet and really delicious!

As the Lane End Conservation Group is likely to wind up after the AGM, it is even more important, and pressing, that the footpaths people care about are kept open - and to do this, more help will be required. Here are three ways this could be achieved:

1. Adopt a Footpath

A path, or group of paths, could be 'adopted' by a resident/s living nearby. This would involve regularly walking the path/s particularly during the growing season, and cutting back the undergrowth if needed.

Nature notes

25 years of red kites in the Chilterns

Information provided by the Chilterns Conservation Board
(www.chilternsaonb.org)

We've all seen red kites swooping and gliding in the hills around our villages and so it will come as no surprise to you that The Chilterns is one of the best places in the UK to see these magnificent birds of prey.



Red kites were driven to extinction in England by human persecution by the end of the nineteenth century. A small population survived in Wales, but there was little chance of these birds repopulating their original areas.

Between 1989 and 1994, kites from Spain were imported and released into the Chilterns by the RSPB and English Nature (now Natural England). Red kites started breeding in the Chilterns in 1992 and now there could be over 1000 breeding pairs in the area. The reintroduction has been so successful it is not possible to monitor all the nests, so the overall size of the population can only be estimated.

Since 1999, chicks have been taken from the Chilterns for reintroduction to other parts of the country.

Kites use nests abandoned by other birds, or will build their own in tall trees. The nests are made from large sticks and are normally lined with wool, which the birds collect along with other unusual items such as pieces of plastic, and sometimes even items of clothing.

By mid-April the female lays up to four white eggs, flecked with

Tuesdays

Regulars

Parent & Toddler Group—9.30-11 Lane End Primary School. Tel Sure Start 447110

The Tree—lunch and soft drink offer £5.99 per person, 12-5pm

West Wycombe WI—Third Tuesday in the month (except August) 2pm in West Wycombe Village Hall. New members and visitors welcome. Tel Janice 881049

Hambleden Valley Gardening Club—7.30pm, First Tuesday of the month, Skirmett Village Hall. Tel 01491 638690

Bingo — 7.30pm Sycamore Room Lane End Village Hall

Junior youth club— LEYCC call Emma for info on 883878

Events

2 Sept—Visit to Kingston Bagpuize House with Hambleden Gardening Club. Tel 01491 638690

7 Oct and 4 Nov—Aspects of gardening talks, 7.30pm Skirmett Village Hall with Hambleden Gardening Club. Tel 01491 638690

28 Oct—Children's Bingo, 1.30pm at LEYCC. £2.50 per child

Wednesdays

Regulars

Music & Rhymes—9.30-10.15 Lane End Primary School. Tel Sure Start 447110

The Tree—lunch and soft drink offer £5.99 per person, 12-5pm

Bridge Club—1.30pm Lane End Village Hall

School of Traditional Medieval Fencing—7.30pm Lane End Village Hall

Quiz Night—8.30-pm at The Tree in Cadmore End

Senior youth club—LEYCC call Emma for info on 883878

Events

8 Oct—Information coffee morning showing off all the clubs and organisations available in Lane End. 9-11am LEYCC

Thursdays

Regulars

Simply Walk—10am Lane End Playing Field's car park. Walk and chat for 1-2 hours

Coffee Stop—Village Hall 10-12noon. Coffee and chat. All welcome, run by Methodist Church

Lane End Support Group—second Thursday of the month, 9.30-11.30am, Sure Start Children's Centre at Lane End Primary

Computers@The Centre—11.30-2pm LEYCC

The Drop-in (Social lunch) - 12-2pm LEYCC

The Tree—lunch and soft drink offer £5.99 per person, 12-5pm

Four Ends Flower Club—Fourth Thursday of the month 2pm in Lane End Village Hall. Visitors £5. Flower arranging demonstration, raffle, tea and cake. Contact 482724

Circle Dancing—First Thursday of the month, 2pm Lane End Village Hall. Contact Mary Williams 01235 520608

LEOPAG—First Thursday of the month 2-4pm LEYCC

Line Dancing for Beginners. 7.30-9.30 Frieth Village Hall

Lane End Players—8pm Village Hall Tel 07706 426320

West Wycombe Guides—7.15pm Piddington Village Hall

NEW French Refresh and Extend—8-9.30pm, La Cabane@Samedi, Lane End. Tel 881919

Fridays

Regulars

FSFH Circuit Training—9.30-10.30am LEYCC

The Tree—lunch and soft drink offer £5.99 per person, 12-5pm

Events

10 and 17 Oct—The Ladykillers by Lane End Players Tel 07706 426320

17 Oct—Officer's Talk at Cadmore End Village Hall, 7.30pm. Tickets £6. Tel RBL Clifford Miller 881645

24 Oct—Holy Trinity Skittles evening. 7.30pm, tel 881913

31 Oct and 28 Nov—Holy Trinity Whist evening, 7.30pm, tel 881913

← THURSDAY Events

11 Sept, 9 Oct, 13 Nov and 11 Dec, Lane End Support Group for parents and carers of children with special needs and disabilities. 9.30-11.30am Sure Start Children's Centre at Lane End Primary

Saturdays

Regulars

Coffee Shop—first and third Saturdays of the month, 10-12noon, Lane End Village Hall

Marlow Wolves—American football 9.30-12.30am Lane End Playing Fields, all welcome. Email sam_mckee@hotmail.co.uk

Lane End Conservation Group Action Day—10am First Saturday of the month meet in the Car Park by Lane End Surgery

Events

6 Sept, 4 Oct and 1 Nov —Twinning Association coffee shop, 10-11.30am Lane End Village Hall

20 Sept, 18 Oct and 15 Nov— Holy Trinity Coffee Shop Lane End 10-11.30am Village Hall

20 Sept—RBL quiz, Frieth Village Hall 7.30pm. Tickets £8.50 from Bruce James 881079

11 and 18 Oct—The Ladykillers by Lane End Players Tel 07706 426320

FEATURED:

18 Oct (continues Sunday)—**Seven Strands and More**, art exhibition and sale of work at Hambleden Village Hall. Features Lane End craftspeople
www.7strandsandmore.wordpress.com

8 Nov—Wycombe Brass Band Concert at Lane End Village Hall, 7.30pm (in aid of the Poppy Appeal). Tickets from Bruce James 881079

Sundays

Regulars

Parish Communion—9.30 Holy Trinity Church Lane End (crèche first Sunday of the month)

Elim service—10.30 am at Elim Christian Centre, Edmonds Road, Lane End

Sung Eucharist/Family Service—11am St Mary's Church Cadmore End

Morning Service (Methodist)—11.15am Holy Trinity Church Lane End

Whistles & Bells dog behaviour school—9-12noon LEYCC, Tel Jenny 07703 020344

Sunday lunch—Grand International Buffet and traditional carvery at The Tree, Cadmore End. Book on 881183

Evensong—6pm at Holy Trinity Church Lane End

Lane End Players—7.30pm Village Hall Tel 07706 426320

Events

7 Sept—LEYCC 10 year party 11am-3pm LEYCC

7 Sept—Chiltern Marathon, starts at Lane End Village Hall

21 Sept—Meat raffle raising money for LEYCC at The Chequers, Wheeler End, 3.30pm.

9 Nov—Remembrance Parade, 11am, Lane End Village Hall followed by a service in the church. Parades at Wheeler End at 10am and Cadmore End Church 11am.

30 Nov—'Messy Church' afternoon, Lane End Village Hall