

## Useful Telephone Numbers...

Parish Clerk—Hayley Glasgow	01494 437111
Lane End Surgery	01494 881209
Lane End Pharmacy	01494 880774
NHS Direct	111 / 0845 46 47
Lane End Holy Trinity Church	01494 881913
Lane End Primary School	01494 881169
Little Explorers Nursery	01494 881169
Lane End Village Hall	07470 303163
Frieth Village Hall	01494 881176
Lane End Youth & Community Centre	883878 / 07932 326046
Elim Christian Centre	01494 882587
Lane End Oasis Centre	07592 587554 / 881999
Cadmore End Village Hall	01494 881735
Cadmore End C of E Church	01494 881913
Cadmore End Primary School	01494 881460
Bucks County Council	01296 395000
Wycombe District Council	01494 461000
Highways On Call	0845 2302 882
Flytipping	0845 330 156
Police—non emergency	101
Wycombe General Hospital	01494 526161

## Grouse & Ale

*everything you need in an English country pub*



- from light lunches to full 3-course meals
- Cask Marque accredited real ales
- extensive selection of wines – 20 by the glass
- function room and private dining area for parties of up to 50 dining or 80 buffet
- courtyard dining and drinking
- wi-fi internet throughout

Gastro Pub of the Year  
Award Winner





*Grouse & Ale, High Street, Lane End, HP14 3JG*  
01494 88 22 99 • [www.grouseandale.com](http://www.grouseandale.com)

## little explorers nursery

Choosing the right nursery for your child is essential. At Little Explorers Nursery we treat each child as an individual, nurturing their talent, skills and confidence so that they can flourish. We have a bright and spacious setting. Inside, there's sand and water, messy play, painting and crafts, cooking, role play and music. There are quiet areas too for reading, computers and maths. Outside, the Nursery has two play areas: one for riding bikes and scooters and another where we enjoy playing, climbing and digging, growing fruit and vegetables and exploring the log pile for mini beasts!

The Nursery is led by a qualified teacher supported by experienced and qualified staff. Full or part-time places for 2, 3 and 4 year olds. Call us to arrange a visit on 01494 881169 or email us at [office@laneendprimary.co.uk](mailto:office@laneendprimary.co.uk)

*"Children make a good start in the Early Years Foundation Stage and thrive in the caring and stimulating classes."*

OFSTED April 2014

Little Explorers Nursery at  
Lane End Primary School  
Edmonds Road, Lane End  
Bucks HP14 3EJ



The Clarion is the Parish of Lane End's non profit -making magazine, for the sharing of information about Parish activities. Neither the Editor nor the Parish Council, whilst sponsoring the magazine, takes responsibility for the statements and/or views expressed herein.

We welcome any news or diary dates from community organisations and letters from individuals. The next copy deadline is 1 August and the next issue will be out in the first week of September.

Send copy to [katyjdunn@btinternet.com](mailto:katyjdunn@btinternet.com)

Or call Katy on 01494 883883 for more info

## The Window Doctor

**CARE & REPAIR FOR ALL YOUR UPVC & ALUMINIUM WINDOW & DOOR PROBLEMS**

- Replacement of broken down sealed units - misting up inside glass
- Adjust front & back doors that do not shut
- New handles, hinges and door locks
- Replacement of patio door wheels
- New security handles with keys
- New door panels and cat flaps
- New Georgian style or leaded style sealed units
- All Insurance work • Burglary damage • Servicing



**PLUS INSTALLATIONS OF NEW UPVC WINDOWS & DOORS**



Call us for a FREE Survey and Quotation.

**No call out charge**



Friendly Family Established Business

**Cowling & Co.**

**Mobile: 07860 435742**

**Tel/Fax: 01494 483567**

email: [windowdoctor@cowling.plus.com](mailto>windowdoctor@cowling.plus.com)

**[www.windowdoctor.co.uk](http://www.windowdoctor.co.uk)**



# Safety and security

## Drink driving

Your neighbourhood team has been targeting drink drivers in our area. We've been making three arrests per month since February and intend to name and shame these people where we can.

## March Arrests

A 54 year old male named Gary Carpenter from Marlow Road, Stokenchurch was arrested after failing a breath test in Stokenchurch. He has been disqualified from driving for 20 months and fined over £400.

A 59 year old male named Howard Morrice from Aston Hill, Lewknor, was arrested after he failed a roadside breath test in Stokenchurch. He has been disqualified from driving for 12 months and fined over £200.

A 55 year old male named Graeme Watt from Wheeler End was arrested after he failed a roadside breath test in Lane End. He has been disqualified for 20 months and fined over £500.

## April arrests

A 34 year old male from Cricket Ground, Stokenchurch was arrested after failing a roadside breath test in the village. He has been charged.

A 63 year old female from Spriggs

Holy Lane, Radnage was arrested on suspicion of drink driving in Radnage. She has been charged.

A 62 year old male from Worcester-shire was arrested on suspicion of being drunk in charge of a motor vehicle in Fingest. He has been released without charge.

Once the court cases have been concluded we will be looking to name and shame these offenders too. You can also see any court reports in the Bucks Free Press.

## Burglary

No dwelling burglaries have been reported in the neighbourhood in April, possibly due to the increased police presence.

## Speed Awareness

We ran road safety and speed awareness weeks throughout the neighbourhood in April and extra officers joined the team to target speeding motorists.

140 tickets were issued. A female from Watlington travelled through the 30mph limit at Mill End at 57mph. Tickets were also issued for using mobiles, bald tyres and driving without an M.O.T.

# From the Editor

There's been rumours I'm stepping down as editor as I've a new full-time job, but you don't get rid of me that easily! It's been tricky fitting it all in, but many thanks go to Andrew Mactavish who has stepped in as roving reporter. Also, thanks to Gill Barrett who has taken on the distribution and advertising side of things.

Summer weekends are always packed with events. Highlights coming up include Lane End Fete on 13 June where the village comes together for fun and laughter on the common in front of the church. If you can help on the day, please contact Bob Nix on 881000 / [nix682@btinternet.com](mailto:nix682@btinternet.com).

Sunday 21 June should be fun on Moorend Common for the Big Father's Day Picnic. Just turn up at noon with your rug and picnic and there'll be a few activities to get involved with if you want to, or just chill out with your family. Don't miss the tug of war at 1.30pm—Lane End vs Frieth dads. The honour of our village depends on you!

Send me an email on [katyjdunn@btinternet.com](mailto:katyjdunn@btinternet.com) or call 883883.

Katy Dunn, editor

## Advertise in the Clarion

Connect with your local community,  
reach 1700 households in the area

**£55 half page per issue**

**£90 full page per issue**

**Discounts for multiple issues**

Contact Gill Barrett on [gill.barrett@btinternet.com](mailto:gill.barrett@btinternet.com) / 881822



Did you know that someone from the Connell Family has run a shop on Lane End High Street since 1969?

Elizabeth Connell has now retired and the Post Office has left the building: Lynda, her daughter and a graduate of Smithfield (Market) College has been in the meat trade for over twenty years and proprietor of the shop since the eighties. Few people like change but we would like to assure all our customers (including those we haven't met yet) of our continued dedication to bringing you the very best quality merchandise.

**From the Meat Counter:** Our meat is free-range, locally and responsibly sourced. We cure our own bacon; make our own mince, burgers and sausages. We are very particular about our suppliers so that you don't have to be. Check our prices against the supermarkets, you might be surprised.

**From the Deli Counter:** The vast majority of our produce on this counter is made in-house; we cure and cook our own ham; cook our own Beef, Turkey and Chicken. The Sandwich Bar offers freshly made baguettes and sandwiches.

**From the Coffee Shop:** Italian-roasted coffee beans are ground to produce the authentic espresso favourite from which all others are derived. Come and join us in our new, more comfortable coffee-shop area. We are happy to offer a friendly and inviting destination for our customers to stay a while and enjoy their coffee in comfort, meet with friends or ponder the weekend's menu.

We look forward to seeing you soon!

Sunset Stores, High Street, Lane End. 01494 881660  
Johnstons.catering@gmail.com

**Route 48** (Arriva) Monday - Saturday, at roughly hourly intervals during the working day, runs from Lane End to High Wycombe to Great Missenden.

**Route 28** (Carousel) Monday - Friday, fills in some gaps in the route 48 service. Runs between Lane End and Asda. Some buses continue through Lane End to Cadmore End and Stokenchurch. It does not run on Saturday.

**Route 32** (Arriva) Evenings only, Monday - Saturday. Runs to and from High Wycombe via Asda.

**Route 48A / 48** (Vale Travel) Sundays only. Runs between Lane End, Cadmore End, Stokenchurch and High Wycombe.

**Bus Stops** The bus services serve several stops as they pass through Lane End and Cadmore End. Information sheets at each stop list the time and route number of each bus, plus its destination. This can be confusing because route 48 buses are shown going to Great Missenden, but they **do** go through High Wycombe. In this guide, departure times of buses to High Wycombe are shown from the Archers Way stop - at other stops the times may be a minute or so earlier or later, but these can be found at each stop.

## TONY'S GARDEN SERVICES



NO JOB TOO SMALL

GARDEN MAINTENANCE      COMPETITIVE RATES

REGULAR SCHEDULES ARRANGED      MARLOW BASED

REFERENCES CAN BE SUPPLIED **TEL: 07948 027373**

**Email: t.kirkland@tiscali.co.uk**

# Bus times

Parish councillor Nigel King has kindly attempted to make some sense of the chaos that is the Lane End bus service. Many thanks and hats off to him. If you have any suggestions or corrections, please contact him on: [nigel.sandra@btinternet.com](mailto:nigel.sandra@btinternet.com)

A community minibus service is also proposed for Lane End and there will be a questionnaire about this in the next issue.

**Route 28 in red    Route 32 in green**

## Bus times from Lane End to High Wycombe

**Mon to Fri** 6.55am 7.20 **8.03 (8.15 non school days)** 8.51 **9.12** 10.00  
11.01 **11.01** 12.00pm 1.00 **1.01** 2.00 3.00 **3.31** 5.43 **7.09pm** **8.09** **9.08**  
**10.08**

**Saturday** 7.53am 9.00 then hourly till 4.00pm **then 7.08pm** **8.08** **9.08**  
**10.08**

**Sunday** Vale Travel buses 10.20am 12.20pm 2.04pm 3.44pm 5.44pm

## Bus times from High Wycombe to Lane End

**Mon - Fri** **7.00am** **8.45** 9.40 10.40 **10.45** 11.40 12.40pm **12.45** 1.40pm  
2.40 **3.15pm** **3.55** 5.20 **5.30** 6.10 **6.40pm** **7.40** **8.40** **9.40** **10.40**

**Saturday** 9.40am then hourly till 3.40pm 5.40pm **6.40pm** **7.40** **8.40**  
**9.40** **10.40**

**Sunday** Vale Travel buses 9.50am 11.50 1.50pm 3.50 5.35pm

**Cadmore End services** (no buses on Saturdays)

**Mon - Fri to H W** **7.59am** **9.08** **1.07pm** **From H W** **7.00am** **12.45pm**  
**3.55pm** **5.30pm**

**Sunday** Vale Travel buses. Times from Cadmore End 10.15am 12.15  
2.08pm 3.48 5.53pm

# Your Parish Council



[laneendparishcouncil.org.uk](http://laneendparishcouncil.org.uk)

**Parish Clerk** ♦ **Hayley Glasgow**

Tel: 01494 437111

[clerk@laneendparishcouncil.org.uk](mailto:clerk@laneendparishcouncil.org.uk)

74 New Road

Sands

High Wycombe

Bucks HP12 4LG

## Councillors

**Chairman:** Cllr Michael Detsiny

**Vice Chairman:**

Cllr Graeme Coulter

Cllr Mandy Dunning

Cllr Jane Osborn

Cllr Colin Harries

Cllr Lorraine Smith

Cllr Keith Wright

Cllr Callum Stewart

Cllr Nigel King

Cllr Mandy Sarney

Cllr William Hunt

## Lane End Parish Council report by Hayley Glasgow

### Up-coming Meetings

The meetings will start at 7.30pm in the Sycamore Room of the Lane End Village Hall on the following dates -

Monday 1 June

Monday 6 July

Monday 10 August

All Parishioners are welcome to attend.

### Parish Councillors

The Election for Parish Councillors in Lane End was uncontested. Here is a list of your Parish Councillors:

Councillor Michael Detsiny  
(Chairman)

Councillor Graeme Coulter  
(Vice-chair)

Councillor Mandy Dunning

Councillor Colin Harries

Councillor William Hunt

Councillor Nigel King

Councillor Jane Osborn

Councillor Mandy Sarney

Councillor Lorraine Smith

Councillor Callum Stewart

Councillor Keith Wright

Former Parish Councillor, Allan Simmons decided after being in service since February 2010 to retire from council duties. We would like to take this opportunity to thank Allan and wish him and his wife Mary all the best for the future.

We are pleased to welcome Mr Colin Harries to the Parish Council. Colin is a welcomed addition to Council making our membership full.

### Planning Applications

The Planning Applications relevant to the Lane End Parish Council are updated on the Parish Councils website

[www.laneendparishcouncil.org.uk](http://www.laneendparishcouncil.org.uk) every Monday from the official list of verified applications supplied by WDC.

Whilst the Parish Council does not have the power to determine applications its local knowledge is sought on each and every application.

### Allotments

There are three allotments sites in the Parish, Chalky Fields, Bunkers and Sandyfields. If you would like more information about allotments please contact the Parish Clerk.

### Street lights

To report a faulty street light please note the column number, the road where the street light is situated and the nearest property and report to

the Clerk - Hayley Glasgow 01494 437111 /

[clerk@laneendparishcouncil.org.uk](mailto:clerk@laneendparishcouncil.org.uk)

### Pot Holes / road repairs

You can track and report pot holes/ road repairs through the Buckinghamshire County Council website <http://transportforbucks.net/report-it-pothole.aspx> or you can call them on 01296 395000 / 0845 3708090 Monday to Thursday 9am-5.30pm and Friday 9am to 5pm.

If you consider this to be dangerous or an emergency, please call BCC on: 01296 382416 (9am-5.30pm Mon-Thurs 9am-5pm Friday) or 01296 486630 (out of hours and weekends).

### Village Fete

The Lane End Village Fete will be on Saturday 13 June. Councillors will be at the Fete and look forward to seeing you there.

### Family Fun Fair

There will be a family fun fair on Ditchfield Common from 9-11 July. The fair was a great success last year and we look forward to welcoming them back this year.

### Talk to us?

We would love to hear your comments / suggestions / complaints or compliments. Please contact the Parish Clerk Hayley Glasgow 01494 437111 / [clerk@laneendparishcouncil.org.uk](mailto:clerk@laneendparishcouncil.org.uk)

extreme skin allergies often have an inadequate skin barrier.

This allows allergens to move across the skin which in turn triggers a cascade of immune responses resulting in histamine release. Histamine causes itchiness, swelling and redness of the skin.

Just like humans who suffer from eczema, if you are aware that your animal suffers from skin allergies it is really important to treat a flare up as soon as it happens before it spreads. Ways to do this include using anti-inflammatory creams, soothing, anti-bacterial shampoos and anti-histamines. If the flare up

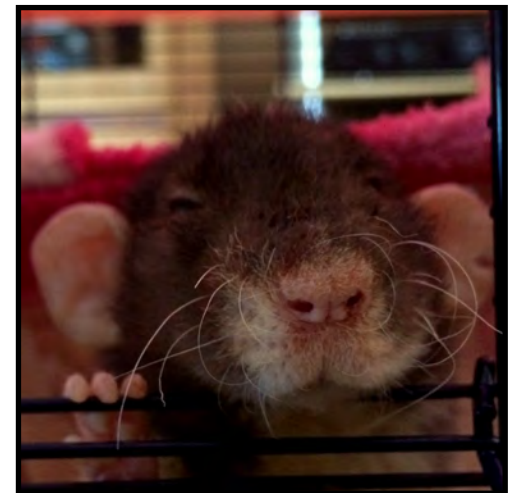
spreads then your pet may need systemic treatments of anti-inflammatories and antibiotics to reduce the self-traumatisation and treat secondary skin infections.

As always, prevention is better than cure so try to reduce your animal's exposure to triggers. Treat fleas monthly, avoid known allergens in the house and spray to eliminate dust mites and flea larvae. Cherry Tree Vets is offering all clients the option to join a new healthy pet plan to help reduce and spread the cost of regular treatments with the added advantage of a free six monthly health check, blood sample and blood pressure check.

### Patient of the month: Einstein the Rat

Einstein is a lovely, friendly, 2yr old pet rat who suffers from asthma. He has his own paediatric inhaler to help control his breathing. Einstein developed a growth in his mammary chain region, on his flank that was becoming painful. He underwent a general anaesthetic to remove the mass at Cherry Tree Vets.

This procedure was not without risk due to Einstein's lung problems. However he did exceptionally well, remained steady throughout the anaesthetic and the tumour was removed successfully! His wound has now healed without complications and he has moved back in with his other rat companions. And as you can see from the photo he is a comfortable and happy rat once again!





# Ask the: Vet

with Clare Hamilton 



## Allergic Skin Disease

With summer in the air, animals can suffer from allergic skin disease. Signs include redness, pustules, scratching, licking, ear infections, hair loss and eventually pigmentation and thickening of the skin.

Allergic skin disease is extremely common in dogs and cats and triggers include fleas, dust mites and food and environmental allergens (particularly pollens). Normal skin

bacteria can overpopulate due to scratching which can then become an itch-scratch cycle.

Dietary intolerances can also cause allergic skin disease. It can be difficult to make the connection when a dog is suffering from itchy ears – it may be a result of a dietary intolerance say to pork rather than an environmental allergen such as pollen!

Allergens can be inhaled or eaten but both animals and humans with

## D.J. MACLEOD

FORESTRY, FENCING AND ESTATE CONTRACTORS

**Supplier of quality seasoned firewood**

Tree and hedge planting, surgery, felling, maintenance, grass cutting and scrub clearance

All types of fencing and gates

Supplier of wood chippings

**Telephone 01494 882901**

**Mobile 07850 724023**

[www.donlogs.com](http://www.donlogs.com)

Email: [djmac@globalnet.co.uk](mailto:djmac@globalnet.co.uk)

Cedar Cottage  
Parmoor  
Henley-on Thames RG9 6NN

## Annual Parish Meeting

### Report by Katy Dunn

Lane End Parish Council held its Annual Parish Meeting on Tuesday 28 April with a programme of interesting updates including:

Annual Report from LEPC Chair Mike Detsiny

Finance report from LEPC vice Chair Graeme Coulter

Progress report from M40 Environmental Group Chair Ken Edwards

Progress report from Lane End Action Group's Stewart George

Education report from Lane End Pri-

mary School's Debbie Williams

### LEPC Annual Report

Mike thanked various people who have contributed to the village this year and in many years previously, including:

Liz Connell who retires this year after 20 years as head of the Post Office in Lane End

Allan Simmons who retires from the parish council after five years' service

Katy Donoghue who keeps the Lane End Youth and Community Centre afloat as a volunteer

Mark Lockwood who has successfully resurrected the youth clubs in



**A garden can be many things.**

It can be an extension of your home, an area to entertain or simply a play area for the children. Our philosophy is that whatever your garden is used for it should always be an area of great beauty.

We can help you whatever the size of your garden. We can provide a complete redesign or an improvement to a specific area. Whether your style is contemporary or traditional we will create a bespoke design that will give you a garden that you will love.

**Call us to book a free consultation 07903 195180**

[www.alisonkennygardens.co.uk](http://www.alisonkennygardens.co.uk) | [info@alisonkennygardens.co.uk](mailto:info@alisonkennygardens.co.uk) | 07903 195180

Lane End and is in the process of reforming a youth football team for Lane End.

LEPC's planning team—Lo Smith, Callum Stewart and Will Hunt who are out all weathers checking on planning applications.

Mike went on to describe how LEPC has negotiated a donation of £1500 towards the reformation of the football team from Shanly Developments.

The construction of the new care home on The Row is underway.

LEPC is attempting to get The Peacock registered as a local amenity with the help of CAMRA to make it more difficult for it to become a development site.



Hayley, the parish clerk, is keeping the pressure on Buck County Council about the state of the roads in our parish.

LEPC has taken over the management of the car park next to the Doc-

tor's Surgery and will be enforcing fines for those who overstay.

Speeding studies showed that Park Lane was the road worst affected by speeding traffic and the recently installed flashing speed sign is reportedly having a positive effect.

Dramatic cuts in public services are likely to continue and the parish council is having to take on the maintenance of hedges and verges as well as its open spaces. The parish council would welcome any volunteers to help maintain any part of the parish.

Only one person put themselves forward to be a parish councillor—the future role of the parish council may have to be considered if it is to continue its high quality work effectively.

The parish council remains committed to enforcing the Green Belt but there's a 'bitter battle ahead to protect it,' says Mike.

### Finances

LEPC's precept has remained the same while its income has fluctuated due to factors such as the hedge and verge maintenance and ad hoc expenditure such as grants for the development of the playing fields.

Savings have been made by re-

### Staircases, Doors & Windows, Conservatories From Raymond Good (Joiners) Limited



**Any bespoke joinery work undertaken - Designed, manufactured and installed**



Raymond Good (Joiners) Limited is a specialist provider of joinery solutions catering for the new build, trade and domestic markets. Established in 1962 with over 50 years' experience, we offer an extensive range of products, and can advise on which we feel would best suit the individual's house, style and budget. Plus being a totally independent company, our advice is also completely unbiased!



**Raymond Good (Joiners) Limited** Myer Farm, Oxford Road, West Wycombe, HIGH WYCOMBE, HP14 3BA  
Tel: 01494 881789 Fax: 01494 880789 Email: [sales@raymondgood.co.uk](mailto:sales@raymondgood.co.uk)  
Call into our showroom - Open 9am to 4pm Monday to Friday.  
**Contact us today to discuss your wood, aluminium and PVCu product requirements**

## LANE END SUPPORT GROUP



**For Parents and carers of children with special needs and disabilities. Come and join us for friendship, help and advice at our coffee mornings on the second Thursday in the month.**

**Dates for Summer 2015** (Thursdays between 9.30am and 11.30am)

**11 June**

**9 July**

**No August meeting**

**Located at the Sure Start Childrens Centre,  
Lane End Primary School, Edmonds Road, Lane End, HP14 3EJ**

**For any enquires please contact Lo Smith**

**01494 881147 [lorrainesmith00@gmail.com](mailto:lorrainesmith00@gmail.com)**



predominantly red, pink and white. It can put on 1-2 metres of growth in the season, so can be reduced in height after flowering the end of the summer, and then again in spring. It needs a fairly sheltered position as stems can die back in windy frost prone areas.



Answer: *Camellia*

### Dave's Mystery Plant:

I am a delicate plant mostly known for my abundance of dainty blue bunny rabbit like flowers, but nowadays I also come in purple and white. I start life in winter from seedlings grown in a warm glasshouse. Because I hate the cold I have to be kept inside until all risks of frost have gone, so I like to wait till the last week in May. I last until the cold weather comes in autumn, and then that's it from me. I only grow 4-6" tall, and in many cases I trail down from the edges and bases of hanging baskets with other summer bedding plants.



**APS**  
Est 2004 & Sons Ltd

Plumbing ▶
▶ Heating

## Bathroom

Gas Boiler – Service/Repair  
Plumbing – Taps/Leaks  
Heating – Radiators/Controls  
Bathroom – Taps/Showers

**Local Friendly Service**  
**Call Paul**



t: 01494 482176 m: 07883 341496

negotiating a new contract for street lighting.

### M40 Environmental Group

Ken Edwards has spent the last ten years working on our behalf to mitigate the noise pollution from the M40. The group has made significant progress in the last couple of years and 'we are nearest we've ever been to a commitment to the installation of sound barriers in our area,' says Ken.

These barriers will be a test project and will be rolled out nationally if proven effective. Detailed design of the barriers, which will have solar panels to generate electricity, will be carried out this summer and installa-

tion is slated for 2016.

### Lane End Action Group

Lane End's playing fields have been vibrant in the past, now they're not, but LEAG is working hard to turn things around.

There's been a setback in that the application for Lottery funding has been rejected due mainly to the fact that the playing fields are in a different postcode to the estate which it would serve.

Undaunted, LEAG has had to think again about where to source funding. Funding is most likely to come from sports and activity funders. For this to happen, LEAG has to show that



## Phil Spackman

### Pest Control Services



Extermination or humane removal of moles, rodents, wasps, flies, fleas and other insects.

All domestic, commercial and agricultural work undertaken

RSPH level 2 qualified

For a discreet, professional and fully insured service, please call Phil on

**Tel: 07947 819554**  
**01494 528240**

**phil.spackman@ntlworld.com**




Lane End Playing Fields is a viable facility.

That's where the Lane End community comes in. LEAG needs people to use the facilities as they stand to be able to show that they're well-used in order to get funding for more and better facilities. LEAG has already made a start on attracting sport users that don't need a lot of start-up investment, such as the youth team, a running club and asking a cycling club to use the playing fields as their assembly hub.

Other possibilities being explored which will require some investment are the installation of an outdoor concrete table tennis table and a fitness trail. LEAG has a programme of pop-up events so that people can

go along and see what's available.

### **Lane End Primary School**

Debbie Williams has been in post for four years and she and her team have been working hard to change perceptions of Lane End Primary.

Her vision was for Lane End Primary to be the school of choice for the community in which it sits. She based her strategy on academic performance and a positive attitude to learning.

In 2012 the Ofsted report was 'Satisfactory', in 2014, it was 'Good'. 'A school is like an oil tanker, it takes a long time to turn around,' says Debbie, but by the next visit she's determined to get an 'Outstanding'.



Let's face it, this isn't going to happen. Cleaning up after your dog is your responsibility.

The situation is getting worse on the common around the church, on the playing fields and even on our walkways and pavements.

If you wouldn't want to step in it, don't leave it for others to.

**Please clean up after your dog**

Early potatoes should be ready towards the end of the month and the mains starting to grow well. Keep earthing up your rows of mains to allow for a good crop to form. I mulch my potatoes with Comfrey as I am doing this to feed the tubers.

I am looking forward to getting the runner beans and sweetcorn into the plot and can't wait until harvest season! Successional sowings can be made of beetroot, carrot and lettuce and the courgettes, tomatoes and chillies can now be planted out.

If you have asparagus on the plot hopefully you have been enjoying the tender fresh spears. June is the end of the harvesting period and the spears should be allowed to grow

into ferns and a top dressing of fertiliser added so that the strength goes back into the crowns ready for a wonderful harvest again next year.

Last but not least, Strawberries. Watch out for the pesky pigeons and if you're a tennis fan you can sit back and relax with a nice fresh bowl of strawberries and cream.

### **Favourites:**

There are many shrubs which flower early in the season, but sometimes it's a little harder to find really good displays later in the summer, that's what makes this so special. The Lavatera, or Tree Mallow, is a sun loving shrub which is fast growing especially when established. There are many species but flower colour is →

## ORNAMENTAL LANDSCAPES

**~Former Royal Horticulturalist~**

*Is available for*

**Garden Design, Build,  
& Maintenance Projects**

**Dave Dunbar**

(National Diploma in Amenity Horticulture)

Large or small jobs undertaken including.....  
Patios, Walls, Paths, Decking, Turfing, Planting, Hedge Cutting & Fencing, Ponds & Waterfeatures, Pruning & Tree Surgery, Re-vamping unsightly borders, etc.  
Please view our photos on our website

**[www.ornamental-landscapes.co.uk](http://www.ornamental-landscapes.co.uk)**

**01494-883846 or 07833-684065**

# Gardening

with Dave Dunbar 



## summer afternoons in the garden

It's t-shirt weather! Time to enjoy the fruits of our labour in a beautiful garden. On a quiet evening with a glass of wine, there's nothing better than bouquets of sweet smelling summer Jasmine, admiring a fine lawn, and waiting for your favourite flowers to open... Enjoy!

### Seasonal Top Tips:

Now all the herbaceous have grown into sizable plants they will be easy to identify and can be assessed for casualties and replacements. It's surprising how many 'perennials' are planted and after a few years have completely disappeared due to many reasons such as frost, water logging, poor soil preparation, yet more often than not it's because some just don't live that long. Where's all the new plants I bought last year? Common garden centre plants like lupins, delphiniums, Monarda and Catananche, struggle after a few years. These plants could also be wiped out by more vigorous neighbouring ones spreading into their living

space, so give them room to breathe.

Keep an eye out for Lily beetle. It's always been around but the last few years I've become more and more aware of them and their ability to shred Lilies and stunt their growth to the point of preventing flowering. You can't miss them they look like oversized ladybirds without the spots. One of the most effective forms of treatment is catching them and killing them, but be careful not to just knock them off as they drop to the floor and climb back up again when you're not looking!

### Nath's Allotment:

The risk of frost has now passed and it's time for the plot to hopefully go mad and enjoy the sunshine! This is the busy period. Not only are we trying to get everything planted but the battle with the weeds is now continuous. Keep hoeing on sunny days and allow the dead leaves to wilt on the surface, allowing them to mulch back into the soil.



B&T Supermarket

Your friendly local store



- Visit our new Post Office now with extended opening hours, offering a wide range of Products and Services.
- Wide variety of Groceries, Fresh Fruit and Vegetables, Fresh Sandwiches, Dairy Produce and a extensive Frozen selection.
- Fresh Crusty Bread and Pastries, baked fresh daily.
- Wines, Spirits, Lagers and Beers.
- Dry Cleaning and Carpet Cleaner for hire.
- In-store Cash Machine.
- Pay Point Terminal: Re-charge Electric and Gas, TV Licence, Rent and Council Tax, Mobile Phone Top-ups, Photocopying.



Opening Hours: Monday – Saturday 8am – 8pm and Sunday 9.30am – 2.30pm

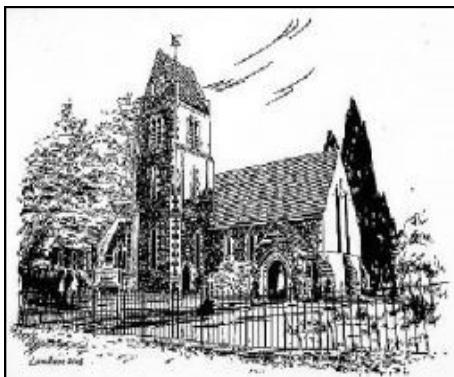
Edmonds Shopping Centre  
5-7 Edmonds Road, off Archers Way (Next to Elim Centre)  
Lane End, High Wycombe, Bucks, HP143EJ  
Londis: 01494 882346 Post Office: 01494 883556





## Holy Trinity church

by Alan Evans

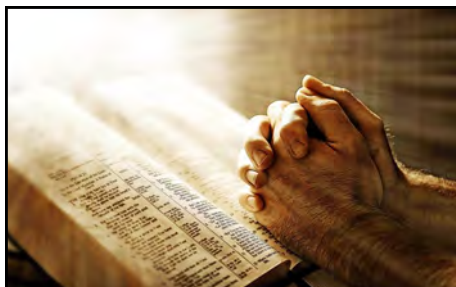


### Holy Trinity Church Lane End

Your church is now open every day during daylight hours.

Why not take five minutes from your busy life to spend some time to pray, or just sit in the peace and serenity of this beautiful building.

Thanks  
Alan Evans  
Churchwarden



## Ask the: plumber

with Bill Blake



**Bill, I've turned on my outside tap for the first time since winter and it's dripping. What can I do?**

Outside taps can drip from many places. Here are the most common:

You turn the tap on and as well as water coming out of the spout, it comes out of the top of the tap round the handle. This is a leaking gland nut. Usually all that's needed is to tighten the nut by about a sixth of a turn.

If the tap wasn't isolated in the winter, the tap base may have split due to frost. This will cause the tap to drip constantly. The only cure is a new tap.

Another winter-related problem is frost damage to the pipe supplying the tap. This can cause the joint on the tap connector to leak or the pipe to split. The joint is usually a relatively simple job to reseal. A split pipe, however, is more of a problem.

### Bill Blake, Plumber

Your friendly, trustworthy and house-trained' local plumber

Happy to take on all your household plumbing tasks, from mending a dripping-tap to installing your new bathroom.

No callout charge, No VAT



**Phone: 07762 807767**

Based in Wheeler End  
City & Guilds Qualified

two or three decades, resulting in the contraction of generalist farms to become small hobby or lifestyle farms for those with supplementary sources of income.

The few remaining serious food producing farms have expanded with additional land - occasionally by purchase but more often by renting land from neighbouring holdings, or by 'share farming', or by farming additional land on a contract basis. So we farmers have to keep a watchful eye on the politicians as well as on the crops and livestock on our farms.

Bryan and Alison Edgley started farming Kensham Farm at Cadmore End in 1955.

Their son, Charlie Edgley, manages the arable crops for the family partnership—around 2,300 acres, mainly of milling wheat, centred on Kensham Farm but including rented fields between West Wycombe, Sands, Booker, Fingest and Lane End.

[www.kenshamfarms.com](http://www.kenshamfarms.com)

## Footpath Report

by Margaret Adnitt

How very beautiful our Chiltern countryside has looked this spring and I do hope you have all managed to get out and walk on our very enticing footpaths.

I am greatly indebted to the band of local enthusiasts who have volunteered to 'adopt' a footpath and so maintain our network of paths for all to enjoy. Do please inform me of any access problems you might encounter on your walk so that action may be taken. Occasionally a large branch or tree impedes a path – do you have a chain saw and would be willing to be called upon in an emergency to remove such obstacles? Do get in touch if you would be able to help.

I am sure you will have noticed just how beautiful the Harris Garden (next to the Chemist) has looked this spring. Grateful thanks are due to Pauline George and John Wimbury who have tended the garden over many years. Sadly they are now unable to continue; is there anybody within the village who would like to take on this rewarding task?

Enjoy your walking during the long summer days and please contact me if you can help: Margaret Adnitt 882609 [margaret.adnitt@gmail.com](mailto:margaret.adnitt@gmail.com)

## Lane End and District Horticultural Society

Report by Trevor Perrin

Everything in the garden and under glass is looking good, so avoiding frost and strong cold winds, we could have another growers' year ahead of us.

Hopefully we will see the results of this reflected in our 124th Annual Show on the 15th August when we sincerely hope we'll see you in Lane End Village Hall.

From everyone in the Potting Shed, we raise a glass and wish you all a lovely summer.



Contact Trevor Perrin on 881414 if you'd like to join the Lane End & District Horticultural Society or for details on how to enter its highly respected Annual Show.

# Prisclean

## Domestic & Commercial Cleaning Services

We also offer Carpet Cleaning, Garden Tidy,  
Pre/End Tenancy Cleaning and One-off Cleans.

**Friendly Local Service / Competitive Prices / Fully Insured**

**Tel:** 01494 882038 **Mobile:** 07743 491814

**Visit:** [www.prisclean.co.uk](http://www.prisclean.co.uk) **Email:** [info@prisclean.co.uk](mailto:info@prisclean.co.uk)

## Lane End Action Group

by Jil Runge

The Group has been working very hard since our last magazine report.

We have suffered a bit of a setback when our bid for funding from the Big Lottery was turned down. However, important lessons have been learned as a result.

We now realise that funding this project is going to be more difficult than we anticipated.

This is not only a Community project as we first thought; it is a community

sports and activity project.

We are venturing down many avenues to find different ways of funding the work. We have learned that the way to attract funding is to prove that people want to use the facilities.

We have to create a range of sports and other activities that don't require so much investment.

We have organised two fun evenings of football and rounders. One in April and the other in May, both very well attended.

Others are planned for the summer.

Our AGM took place on 18 May 7.30pm at the Lane End Youth and

ernment will improve methods of controlling bovine tuberculosis by controlling the disease in wildlife.

The connection between infected wild badgers and incidence of the disease in cattle has been proved by DNA testing of mycobacteria taken from the lungs of road killed badgers, which have been found to corre-

spond to the same sub-type of mycobacteria as cattle which have failed the tuberculosis test in the same Parish.

Many of us agree with a remark made by Princess Anne

on Countryfile, that the best method of control would be humane gassing of badger setts which were known to be infected with bovine tuberculosis. The good news is that scientists are already developing DNA testing of hairs and faeces of badgers that can be found close to a badger sett. When this DNA testing is fully proved it will be possible to ascertain whether or not the sett is infected, so that the only setts to be gassed could be those which are known to be the home of badgers already ill and dying from bTB.

The severity of bovine tuberculosis is such that in the 12 months of the 2014 year 32,851 cattle were compulsorily slaughtered in the UK after failing the tuberculosis test, this be-

ing even worse than in 2013 when 32,612 cattle failed the test - and each test failure was a real personal worry, as well as financial loss, to the farmers and stockmen who had been looking after the cattle. The disease has spread towards the East from the West Country so that in the Chiltern Hills, we are now considered to

**"We farmers have to keep a watchful eye on the politicians as well as our farms"**

be an area at risk, with all cattle in Buckinghamshire having to be tested by Ministry Vets for tuberculosis every year, rather than once every four years.

Another political outlook which is of huge importance is whether the farms should concentrate on the production of food for human consumption, or whether conservation of wildlife should continue to be given more emphasis in the UK than food production. The Economist magazine published an article earlier this year entitled 'Dig for Victory' in which it stated that many British farmers 'just trundle along', without the author recognising that it was politicians, not farmers, who had changed their main objective for farms in England from efficient food production to conservation.

Farmers in England have responded to this changed political outlook with massive changes in structure of farms in England over the past →



**ASPECT CARPENTRY**

**Reliable and professional service for 12 years in the local community**

**Free estimates and competitive prices**

**City and Guilds Qualified**

**Full insured, all work guaranteed**

Internal/external doors  
New windows fitted  
Kitchen and bedrooms  
Solid wood and laminate floors  
Staircase refurbishment

**Call Duncan Frost**  
**01494 880540 /**  
**07811 596 304**  
**aspectdf@aol.com**



# On the land

with Bryan Edgley 



## The politics of farming

It is now the end of one of the driest April months on record, with our cereal crops looking good, but hoping for some rain soon to keep them growing. We have already sprayed the wheat crop twice with a tank mixture containing primarily a fungicide to protect the crop from mildew and diseases such as septoria which affects the leaf and eyespot which affects the stem.

The other ingredient of the tank mix is a growth regulator to improve the root strength and shorten the eventual height of the straw - so that it will remain standing upright, without 'lodging', at harvest time - even if it turns out to be a wet summer. During May and early June we will treat the crops twice more with fungicide, hoping to keep the leaf a healthy green colour right up until it starts to ripen in July.

In ten days there will be an important General Election - the result will be known to everyone by the time this Summer issue of Clarion V is printed. Politics are enormously important to the farming industry.



Badgers are protected at law under the Protection of Badgers Act 1992, so that it is illegal for a farmer to put a diseased badger out of its misery without Ministry consent. But all livestock farmers, especially in the West Country, will hope that the new Gov-

Community Centre and served to emphasise how important this project could be for our community.

### OUR VISION

A vibrant and valued local focus of activity

High Usage of basic but improved facilities

A range of new activities and sports.

### THE NEXT STAGE

Smaller funding applications.

Using the energy of locals.

**IF YOU WANT THIS TO HAPPEN  
PLEASE GIVE SOME OF YOUR  
TIME TO HELPING US.**

Jil Runge (Secretary to **L.E.A.G.**)

01494 881329

jilrunge99@gmail.com

### Lane End OPAG

#### Report by Jane Osborn

Despite being the 'grey' generation, most of us are still interested in the world in general - people, places and 'things' (even if we have been 'hibernating' during the run up to the election).

If that describes you, do come along to Lane End OPAG which meets on the first Thursday of each month at

2pm in Lane End Youth & Community Centre, Edmonds Road - for a talk on a variety of subjects or a quiz, an opportunity to meet interesting people and a cup of tea.

Even better, if you feel you have a talk within you which fellow members of the 'grey generation' might enjoy - or to find out more about the Lane End OPAG - contact the Hon. Sec, Jane Osborn (01494 881641/ [janemosborn3@gmail.com](mailto:janemosborn3@gmail.com)).

### Lane End Conservation Group

#### Report by Jane Osborn

Lane End Conservation Group continues on a low key / informal basis. We hope to help keep the footpaths open, and some of our volunteers also carry out regular litter-picks.

The Group has also been responsible for maintaining the Harris Garden, at the junction of the B482 and Church Road, opposite the Village Hall, and is looking for new volunteers to help with this particular task. If you would like to help - we can provide litter-pickers - do please contact either Margaret Adnitt 882609 [margaret.adnitt@gmail.com](mailto:margaret.adnitt@gmail.com) or Jane Osborn 881641 [janemosborn3@gmail.com](mailto:janemosborn3@gmail.com).



## Letter from Oleron

Report by Tim Cherry

After what seemed sometimes to be a never-ending winter, we have been enjoying fine weather since April. Having just planted some tomato plants and courgettes out I am a little afraid that I have broken the local tradition of '*le Saintes de Mai*' which says not to plant until mid-May.

Here, the big news this weekend is the departure of *l'Hermione*, a replica frigate of the 1750s era, for the USA. *L'Hermione* was built over a period of more than 10 years with original materials and methods but more modern tools. The original voyage under command of Lafayette was to bring supplies and assistance to the rebel forces, and was a factor in the defeat of British rule and the start of the USA. *l'Hermione* is a beautiful ship, and the picture shows her passing down the Charente to begin her voyage. I have somewhat mixed feelings about the celebration, but I am comforted by the knowledge that the French had to obtain the plans

from the UK Ministry of Defence. This was because the original 'Hermione' was subsequently captured and was taken into the Royal Navy where she served for some time afterwards.

And so summer approaches fast, and the usual visitations by camper vans to the Island has begun. The authorities on Oleron are still arguing about imposing a toll on visits to the Island; it will inevitably cause complaint as trade may suffer.

We hope that soon some of you from Lane End will be coming to visit us again. This is a superb place for a summer visit, and the beaches and facilities here are great - not to mention the food and wine. *A'bientot!*



The Clarion – Summer 2015



It was a wonderful end to the Spring term with lots of highlights including a brilliant performance of 'Treasure Island' by our lower KS2 pupils to complete our 'Pirates' topic. This term our older pupils have been getting to grips with part singing from their upcoming Oliver! Production. They are already sounding amazing so it promises to be a really superb show! The school is really enjoying the weather and the chance to spend as much time outside in our grounds learning as possible. The Owls children have been planting sunflower seeds with the help of our kind volunteer Mr Detsiny and are fascinated by the arrival of some tadpoles in the classroom and have been thinking about how to look after them so they can grow into frogs. The excitement is growing as the tadpoles seem to be growing little legs!

We are looking forward to the sum-

mer and the excitement is mounting as we get closer to our 150<sup>th</sup> celebrations and, to paraphrase a famous wartime poster, **FRIETH C.E.C. SCHOOL NEEDS YOU!** We would like to reach out to anyone from the wider community with links to our school and invite them to join us for two of our special events:

**Tuesday 7 July - Pop up Archive** – An exhibition of the history of Frieth School including many exciting artefacts and photographs. This will run at various times and will be open all day for tours.

**Friday 10 July - Summer Queen** – Our traditional maypole and country dance which includes the welcoming in of our new head boy and head girl. This will be followed by an afternoon and evening of celebration, including stalls and refreshments, and a chance to catch up with friends past and present.

Please let us know if you would like to attend these events, email us at:

[150years@frieth.bucks.sch.uk](mailto:150years@frieth.bucks.sch.uk)

## Frieth CEC school 150 years

### Help us celebrate

**Contact the school with your memories, photos and artefacts and join us on Tuesday 7 July to view the pop-up archive and Friday 10 July for Summer Queen celebrations**

[150years@frieth.bucks.sch.uk](mailto:150years@frieth.bucks.sch.uk)



One of the most important things that we can give our children is the confidence to try new things and keep on trying

until they succeed. So it was hugely rewarding when last term Lane End Primary School was chosen by Education Secretary Nicky Morgan and a panel of experts as a winner of the DfE's Character Awards which are designed to provide a boost for schools that demonstrate an excellent approach to building character and resilience. Lane End Primary was the only primary school in the south east to be recognised and the award came complete with a prize of £15,000 which we shall put to very good use in kitting out our new technology-based Learning Cafe where parents can find out more about what their children are learning and how they can best support them at home.

The Learning Café will see the culmination of our Digital Learning Project. The children now regularly use iPads to enhance their learning in and out of the classroom, every class has a visualiser and apple TV to help children project their work for the class and a generous donation from the PTA helped us to install a new computer suite last term.

Developing ambition in our children is another key to their future success. Whether that is through our work with local grammar schools (including our weekly visits from the sixth formers from Sir William Borlase's to help with reading and maths) or participation in competitive events like the Maths in Motion Challenge or our continuing work with Garsington Opera to develop a greater understanding of the arts: we hope to raise the aspiration of our pupils in both their academic life but also as they encounter the world around them.

Finally, this term we have been delighted to find that a family of ducks and ducklings have set up home in our playground. It's as if they have heard about our plans for a new wildlife garden and pond which hope to have up and running ready for September!

If you are considering which nursery or school would suit your child please pay us a visit. Call 881169 or email [office@laneendprimary.co.uk](mailto:office@laneendprimary.co.uk)



## Village Hall

### Report by Margaret Scott

From 1 May 2015, all Village Hall bookings will be made through Eve Berry on 07470 303163. This is a dedicated number for all bookings.

Thanks must go to Christine Jennings, who has carried out this job for a very long time. Please accept our sincere thanks Christine.

We cannot thank Eve enough for offering to take this over (yes, she did!). Please make her life as easy as possible by giving all the details slowly and clearly, especially your name and number.

## Royal British Legion

### Report by Peter Jennings

We are having a table in the Village Hall on fete day, Sat 13 June, where we are hoping to recruit new members for our committee and helpers for delivering poppies in October.

Rachael's lunch at Forgetts Rd is on 7 June 12pm-2pm (including a Bring and Buy table.)

BBQ at Lord Parmoor's Bessemer Cottage, Moor Common is on Sat 18 July at 6.30pm Bring your own drinks and glasses. Tickets from Bruce James 881079 or Andrew MacTavish 881945.

## Great summer evenings at

## The Prince Albert

### 'A little old fashioned pub with a big heart'



Fortnightly pub quiz • Occasional folk nights

**Open all day!**

Food served weekdays 12.15-14.30 and Sunday 12.30—15.00

Evening meals Friday and Saturday 19.00-21.30

Please book for Saturday evenings

The Prince Albert, Moors End, Frieth, Oxon, RG9 6PX. Tel 881683



## Lane End Youth and Community Centre

Report by Emma Savory

### Playschemes

The Centre has run two successful playschemes already this year and will be open for six days over the summer holidays starting on Monday 10 August. We now only have six places left for children 8yrs plus, so if you are looking for some child-care or something fun to occupy the children this summer then please give me a ring – 883878.



### Bingo

We continue to hold children's prize Bingo every school holidays, please look us up on Facebook or contact the Centre for future dates, as more dates are added all the time.

### London Zoo

Would you like to take your children to London Zoo? Not sure if you want to drive in London or pay for parking? Then come on our coach trip on Tuesday 1 September to London Zoo. We can offer you admission price and coach costs for only £25.50 per adult and £21.00 per child, under 3s are free to the zoo but would need a seat on the coach which is £9. We will leave the Centre at 8.45am and depart the Zoo at 4pm. Contact Emma to book your places now.

### Swopsie night

The 20 people that attended Swopsie Night had so much fun, and left with some fabulous new outfits. We will be holding another swopsie night on Friday 24 July at 7pm. This is a great opportunity for you to clear out your wardrobes and donate any good quality clothes, shoes, scarfs and bags. We charge a £4 admission fee, you can then shop for free. Remember only people who donated items can browse first! Items need to be in a good, clean condition, ready for their next owner. Donations welcome now.

### Quiz/bingo night

Forty seven people attended our first Quiz/Bingo Night back in April, we had so much fun and are planning



## Nursery Places

An exciting place to play and learn

Call us on 01494 881460

Our nursery is for children who will turn 4yrs between 1 September 2015 and 31 August 2016. We can offer up to 13 places for this year group. Do come and visit us.

Call 01494 881460 or email [office@cadmoreend.bucks.sch.uk](mailto:office@cadmoreend.bucks.sch.uk)  
[cadmoreendschool.org/](http://cadmoreendschool.org/)



## Frieth Pre-school

Freedom to be me, to explore who I can be

We are a pre-school for 2-5 year olds in the lovely village of Frieth, next to Frieth CEC School!

Opening times

Mon – Wed  
8:40am to 3:30pm

Thurs and Fri  
8:40am to 12:30pm

Lunch Club each day  
11:40 to 12:30

We are open for mornings, afternoons and all-day sessions. To book a visit or register please contact

Donna or Kirstin:  
Tel: 07928 186738  
[frieth-preschool@outlook.com](mailto:frieth-preschool@outlook.com)  
[www.friethpreschool.co.uk](http://www.friethpreschool.co.uk)

Received 'GOOD' from Ofsted! (January 2015)

# Schools



Life at Cadmore End continues to be busy and fun. It has been a tradition for many years that we hold a May

Day celebration. Each class learnt a dance which they performed using the Maypole. Tallie and Sam, both in yr6, were our May King and Queen and the afternoon finished with lots of tea and cake.

Thank you very much to Karen Caine who made a magnificent Maypole cake. Sam Breakspear also donated a wonderful cake and all proceeds from this went to Head and Neck cancer research. We were blessed with great weather and it was a super start to the bank holiday weekend.



We also received some very exciting

news this week. Class 4 have been learning how to play our African Drums with Ross Elder since January. They have been invited to perform in a concert at the Royal Albert Hall on 27 June. What a great opportunity for these children.

We have had a real push on music in school and are now offering a variety of musical opportunities such as piano, guitar and recorder lessons, as well as other instruments. We have been delighted to welcome Leah Mills and Tom to the Cadmore team who are supporting us in getting music lessons up and running.

An area in school that hasn't been used to its full potential is now home to our reception and nursery class. These amendments mean these children now have direct access to an outside area and a lovely learning space inside. We still have some spaces in our nursery group for September. If you are interested then please contact us at school.

Do you like pottering in the garden and have a little bit of time on your hands? We are looking for a volunteer to pop into school on a regular basis and give us a hand with our gardening. If interested please get in touch. DBS check required.

another one for Saturday 12 September at 7pm. We offer a fish and chip supper and a quiz for £10 per person. We will also play a bit of bingo throughout the evening (additional cost). Please bring your own drinks. Book your tickets now.

## Facebook

Please add 'Lane End Youth & Community Centre' on Facebook, ask to join the group and you will become one of the first to find out about all our latest events!

## Book us for your event

The Centre is so versatile and can be used for many different events/celebrations, we are very competi-

tively priced, offering discounts to Lane End residents. Pop into the Centre or call anytime to check availability and prices for private hire

## Can you help?

Can you help organise a fundraising event? If so, please let me know as we would love to hear from you.

We are always looking for people to help run the Thursday lunch club too!

*Lane End Youth & Community Centre,  
Edmonds Road, Lane End, HP14 3EJ  
Tel: 01494 883878 / 07932 326046  
Email: leycc@hotmail.co.uk  
Charity Number: 1101360*

## YELLOW CARS

established 1976

### SERVICES

- Airport & Seaport transfers
- Local & National Travel
- Executive Travel
- Minibus for large groups
- Document Delivery Service




**24  
HR**

**BOOK ONLINE:**  
[www.yellowcarshw.co.uk](http://www.yellowcarshw.co.uk)







01494 44 44 02



## Frieth Cricket Club

### Report by Ben Smiley

At last, our season has started! At the time of writing, I am pleased to report that the Frieth Cricket Club Saturday side won their first match although the Sunday team lost by seven wickets.

The work that has been put into the ground at Frieth during the winter has already proved beneficial, with a much more consistent and predictable bounce compared to last year. Our grounds man, Dennis, scarified, added loam (soil) and reseeded our square in November 2014. This removes the dead thatch that settles flat and can't be cut by the mower. On un-scarified ground, the bounce varies in comparison to other patches of the pitch.



We are keen to continue developing the future of Frieth Cricket Club, and after re-launching our Junior Section in 2014, where 28 youngsters signed up and took part, I expect to be able to make an announcement for this season's plans. If you know of any children who might like to get involved in our Junior Section cricket on Sunday mornings, you can register your interest at [friethcricket@btinternet.com](mailto:friethcricket@btinternet.com).

In non-playing news, our fundraising for the Frieth Cricket Club New Pavilion Fund is continuing. If any readers have an interest in supporting us, be it financially, administratively or practically by offering skills or trades, we would love to hear from you at [friethcricket@btinternet.com](mailto:friethcricket@btinternet.com).

For more information about how you can get involved with Frieth Cricket Club contact us at [friethcricket@btinternet.com](mailto:friethcricket@btinternet.com) or ring

Ben Smiley on 07879 855353. You can also view our fixture list at [www.frieth.play-cricket.com](http://www.frieth.play-cricket.com).

## Ask the interior designer

with Samantha Johnson 

Interior Designer Samantha Johnson and her family have recently moved into a grade II listed cottage in Lane End. She loved everything about the cottage the first time they saw it – from its beautiful, English garden to the idyllic location in a small rural village. Having previously lived in a large town they are really looking forward to being involved in the Lane End community.

Samantha has been in the business for over 18 years and is looking forward to restoring the cottage to her usual high standard while maintaining its original character.

Samantha plans to appear regularly in The Clarion to share her ideas and inspiration for your home and garden. If you have any issues or questions you'd like to ask Samantha, email the editor on [katyjdunn@btinternet.com](mailto:katyjdunn@btinternet.com)



**INTERIORS  
for EVERYDAY  
LIVING**

Samantha creates unique interiors with a real sense of identity and individuality. Her flexible style and close attention to detail allows her to take on diverse projects of different sizes, with a portfolio that includes complete redesigns and interior refreshes for family homes, workplaces, hotels and spas.

**SAMANTHA JOHNSON  
INTERIOR DESIGN**

TELEPHONE: 01494 882219  
[samanthajohnsondesign.com](http://samanthajohnsondesign.com)

 **MEET**

SJDesign\_TheClarion\_Summer.indd 1 13/05/2015 23:24



## 🌿 Bucks Open Studios

### Report by Katy Dunn

Bucks Open Studios is the largest visual arts event in the county. In June every year more than 500 artists and makers, in over 200 different venues across Buckinghamshire, open their studios and run exhibitions and events for the public to visit. This year it takes place from 6-21 June. It's a wonderful opportunity to meet artists and see them at work for free.

**Wycombe Court Artists** are demonstrating and exhibiting in the studio and garden in Lane End. Artists include:

Caroline Selvey—Sculpture  
John Ashton—Painting  
Julie Wetenhall—Ceramics  
Sarah-Jane Bennett—Jewellery  
Steve Woodbridge—Metalwork  
Tim Robinson—Painting

Wycombe Court House, Church Road, Lane End, HP14 3HG

Tel: 07711 014841

### **Graham Lewis Heron**

Watercolourist and Graphite Artist of landscapes, animals and portraits. Exhibition is at Moor Common.

[grahamlewisher.co.uk](http://grahamlewisher.co.uk)

Hatters Cottage, Moor Common Lane End, HP14 3HR

Tel: 01494 882200

**Artists Unite** is a group of local artists who exhibits work together in

Wheeler End. (Work pictured left)

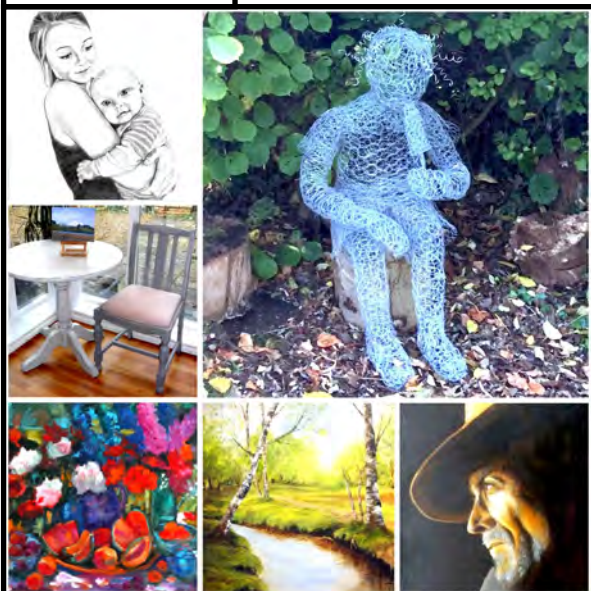
Wendy Earley—Wire mesh sculpture, paintings  
Margaret Broughton—Acrylic paintings  
Kristin Desmier—Furniture upcycling  
Kathy Quantrill—Oils  
Sandra Thomas—Water colours

[artistsunite.co.uk](http://artistsunite.co.uk)

The Long Croft, Bullocks Farm Lane, Wheeler End

Open daily 1am - 6pm

Work by Artists Unite



## 🌿 Hambleden Valley Gardening Club

### Report by Janet Collins

We had a bit of a scramble to cover our March meeting due to the sudden illness of our speaker causing a last minute cancelation. We were very fortunate in being able to have Roger Askew to step in at the last minute to present a fascinating and informative talk on the history of Savill Gardens in Windsor Great Park.

Our winter talks have now finished until October and we have

just started our garden visits. This first visit was to The Vann in Surrey. What a really great visit! The weather was glorious as was the garden. The owner gave us an insightful history of this ancient house and garden. The garden is magical with lots of different vistas, 'rooms' and themes as you pass through from woodland to lake to more formal areas. To join us call 01491 638690 and check 'what's on' for our events.



## Joe Griffin TV AERIAL SERVICES

- **Poor Reception Solved** - Aerials repaired & supplied
- **TVs** - Hung on your wall for you. Also supplied & tuned
- **Extra TV Points** - For aerial and Sky (In HD!)
- **Sky TV** - Also Foreign Language TV

**Call Marlow 01628 439115**

## Lane End Scouts

### Report by Ian Harris

Lane End Scout Group is a small cog in the well maintained machine that is World Wide Scouting. Our group is not the smallest in terms of numbers, nor is it the largest, but as a rural group we are very well placed in terms of membership, programs and the dedication of our leaders.

We have achieved so much more than groups considerably bigger, better supported and more financially blessed than us and we are quite rightly proud of our recent achievements in building development, membership growth and team work.

Over the Easter weekend many of the Leadership team gave up their free time to help

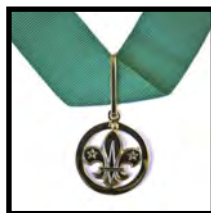


decorate the main corridor in the building, it was hard, hot (and thirsty) work but the end result is marvellous and as Group Leader I would like to thank them all for their above and beyond work of being a Scout Leader work.

Nationally Scouting recognises the dedication of leaders' work through a series of awards that are made annually on St Georges Day and I am proud (and surprised) to have been awarded a Medal of Merit for years

of outstanding service while holding an appointment. It implies keen, conscientious, imaginative and dedicated service over a sustained period.

This could be for any of the leaders within our group, and I am honoured to accept it on their behalf, the citation for the award could be about anyone in the team.



Our Scout Leader Neville Mitchell, a keen cyclist, is undertaking a personal challenge on behalf of the National Scout Organisation raising funds by cycling 100 miles between London and Surrey in the Prudential London Surrey 100 in August and he'd really appreciate your support - Donating to his Just Giving page is easy - just follow this link and click on Donate:

<http://www.justgiving.com/owner-email/pleasesponsor/Neville-Mitchell>

If you think you have something to offer us, in whatever form, or want to get involved with this long running and priceless youth community asset, then please get in touch.

Lane End Scouts and Guides  
Registered Charity 308008

Contact Ian Harris  
Group Scout Leader  
1st Lane End Scouts

[laneend@chilternvalscouts.org.uk](mailto:laneend@chilternvalscouts.org.uk)

Tel 880617

before ploughing, much as you'd put muck on your garden or allotment before digging it over, just on a much bigger scale!

The choice of crops we grow is affected by our soil type and height above sea level. Maize is sweetcorn for cows, ideally we would grow it on rich fertile soils, at about 250ft above sea level. Unfortunately our ground is all a mixture of mainly chalk with patches of sand and clay at around 600ft. The height above sea level affects the growing season and how long it is. Soils get cold over winter, and it is only when the ground is warm enough that you can sow some crops. It's always said the ground needs to be warm enough to sit on with a bare bum before you should plant your maize seed, for us

it is normally the first week of May. Hopefully by mid August it will be over 6ft tall, so it has lots of growing to do, and the muck will help to feed the plants as they grow.

This week our thoughts turn to Open Farm Sunday. This Sunday 7th June we are inviting you all to come to the farm to see what goes on behind the gates. It's your perfect chance to come and see the cows being milked, have a tractor and trailer ride, see some of the calves and lambs born on the farm this year and learn about your local farm. This year there is a small charge to help raise funds for LEAF (Linking Environment and Farming- the charity that organises the National Open Farm Sunday project).





# Milk Men

with Will Lacey 



## The cows are in the fields once again

Spring is an exciting time on the farm, it's the end of the slog of winter, trudging around in the wet and mud, doing very much the same thing every day. It's when the crops start to grow, we let the cattle back out to graze and sow crops for harvesting in the late summer.

Being in the Chilterns, spring gets to us a bit later than in the more agricultural west of England, and even compared to Marlow. Climbing up 500ft of hills gets us more late frosts and slower early grass growth meaning moving the cows out from the winter housing and in to the grass fields a week or two later.

By early May all the cows are out to graze, calves born in February/March are the last to go out. Freezing or close to freezing

temperatures at night time and warm daytime temperatures are not ideal for the small animals as they struggle to maintain their body heat, so anything born after this time will be kept back at the yard in sheds until they are big enough to cope with all possible weather conditions.

Once the cows are outside we can then look to clean all the sheds out. Over winter we've been piling up the muck from the sheds to act as natural fertiliser when it's spread on the ground. We spread it on the fields



## Lane End Players

Report by Georgina Brooks

Our next production is a light-hearted summer show of songs and sketches, 'Super Sounds of the Seventies'.

The performances are Friday 19 and Saturday 20 June at 8pm. The Box Office is already open and tickets, priced at £10 Adults and £8 Concessions for both nights, can be bought from the Village Hall (Sycamore Room) from 9.30 to 12noon on Saturday mornings, by ringing 07706 426320 or by emailing [boxoffice@laneendplayers.com](mailto:boxoffice@laneendplayers.com).

The seating will be casual, around tables, and the Bar will be open. This show is always popular, so get your tickets as soon as possible, especially if you wish a party of people to be seated together.

Come and revel in nostalgia (think Abba, Queen, flared trousers, tank-tops and psychedelic patterns) – you're sure to enjoy it!



## JHC ELECTRICAL SERVICES & Property Maintenance

**James Clark**

### All types of Electrical works undertaken

Rewires, in/outside lights, down lighters, new fuse boards, additional sockets, security lighting, fault finding and CCTV  
City and Guilds/NICEIC Part P Qualified/IEE 17<sup>th</sup> Edition

### All aspects of property maintenance carried out

**Mob. 07720 598860 Tel/Fax. 01494 881766**

The Dog House, 10 Elwes Road, Lane End, Bucks.

**Email: [jhcelectrical25@aol.com](mailto:jhcelectrical25@aol.com)**

**[www.jhcelectrical.co.uk](http://www.jhcelectrical.co.uk)**



Fully Insured and all work Guaranteed.  
Honest, Local, Reliable Tradesman. Established 12 years

A member of the Bucks County Council Trading Standards "Buy with Confidence Scheme"





## Lane End Fete

### Report by Peter Rose

As well as giving local village organisations the opportunity to promote and raise money for themselves, the fête raises funds for the upkeep of Lane End Village Hall.

The regular highlights will be there: the Zippy Dipper for kids, beer tent, brass band, bell-ringing demonstrations, children's races, BBQ, plus some surprise extras!

Most of our village organisations will be represented and the ever popular dog show will also be running. Why not enter your dog in this fun event? Just come along on the day and join in!

As in previous years we will be running a car boot sale on the day. If you would like to reserve a pitch please contact Box Nix using the details below.

An event such as this requires a great deal of organisation both beforehand and on the day. Our small organising committee would be delighted to receive any offers of help - the more the merrier!

Last year's fête was a great success with over £2700 raised for the village hall alone. With our fingers crossed for fine weather, let's hope that this year's will be even better!

Contact: Bob Nix 01494 881000 or email [nix682@btinternet.com](mailto:nix682@btinternet.com)

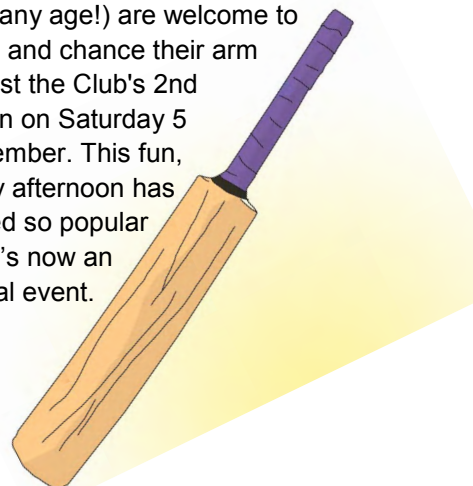
## Cadmore End Cricket Club

### Report by Peter Jennings

There's a quiz at Cadmore End Village Hall at 7.30pm on Friday 12 June with a bar and light refreshments. Tables of 8 but do come along on your own and we will fit you into a team. Please book with Alistair Jeal 07766 044005

Use your speed and dexterity to wind your horse home at a horse racing night on 7 August at 7.30pm at Cadmore End Village Hall. Enjoy light refreshments and a bar but beware as sponsoring and betting is permitted!

Local residents including Lane End (any age!) are welcome to come and chance their arm against the Club's 2nd eleven on Saturday 5 September. This fun, family afternoon has proved so popular that it's now an annual event.





Where your little ones will blossom into independent confident learners in a wonderful environment, cared for by dedicated and qualified practitioners.

 Come and meet our team and see what makes Popples Day Nurseries different.

<b>Bourne End</b>	<b>Marlow</b>	<b>Beeconsfield</b>	<b>Old Windsor</b>
<b>01628 521522</b>	<b>01628 487772</b>	<b>01494 877116</b>	<b>01753 313030</b>

[www.popplesdaynursery.com](http://www.popplesdaynursery.com)



## WHITLER CONSTRUCTION LTD

ESTABLISHED FOR OVER 35 YEARS, WE PRIDE OURSELVES ON HIGH QUALITY WORK AND A RELIABLE SERVICE

- EXTENSIONS
- NEW KITCHENS
- BATHROOMS

- HOUSE ALTERATIONS
- GENERAL MAINTENANCE OR REPAIRS

FROM YOUR INITIAL IDEA WE CAN  
GIVE YOU YOUR COMPLETE DREAM

FOR MORE INFORMATION AND ADVICE CONTACT

**CHRIS BUTLER ON 07971 487 324**

7 ORCHARD ROW, BOLTER END LANE, WHEELER END, BUCKS HP14 3ND  
TEL 01494 882852 Email [wconstruct@hotmail.com](mailto:wconstruct@hotmail.com)

First World War she used to travel around on a donkey, taking beef tea to villagers who were ill. However, when she went to Wycombe to do her shopping, she went in a horse-drawn carriage.

In her 41 years as postmistress, Mrs Plumridge paid out the first Old Age Pensions and saw the telephone exchange come to Lane End in 1923. She loved children and ran the Band of Hope (a charity teaching young people about the dangers of alcohol) and helped with the district nursing committee. She was described as 'kindness itself' in her obituary after her death at 90 in 1947.

Two more generations of Plumridges continued the family tradition—her son Arthur and his son, also an Arthur. It's said that the last Arthur Plumridge never took a day's holiday in his 17 years of service to 1967.

### The future

Stalwarts who give longstanding service to the community are a tradition in Lane End, and we would be wrong to think that it is a thing of the past.

Romi and Arti Mediratta have run the supermarket in Lane End with warmth and good humour for 31 years. It is fitting that they are the ones to take the Post Office forward with its new policy of open-plan counters and longer opening hours.



Mrs Plumridge and great-grandson. Lane End. c1920

'We are excited to have the Post Office,' says Romi, 'When we heard that Liz was retiring, we wanted to ensure there was a post office in Lane End as they are a vital part of a community. We look forward to welcoming new customers to our store.'



## Pendant returned

Report by Andrew Mactavish



The pendant found outside the Post Office by 5yr old Harriet Keen has been reunited with its owner.

Mr Michael Turner (81) was thrilled when he opened his spring edition of The Clarion to see the picture of his grandfather staring out at him from the page. He thought the medallion was gone for good.

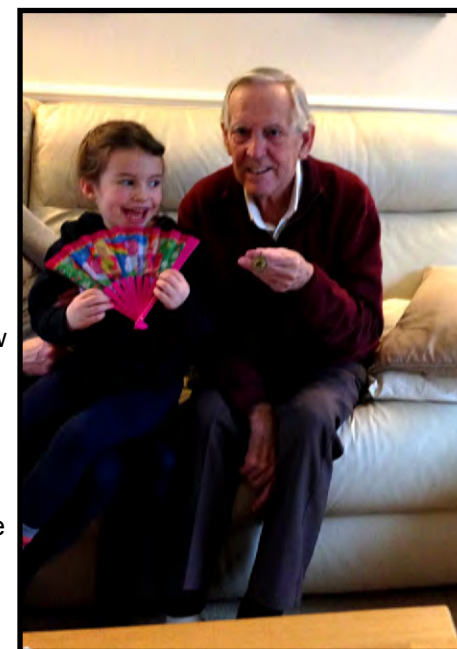
The tiny photograph has been handed down in the family from Victorian times.

The family likeness can be seen in Michael himself and in his grandson.

The unusual silver mounting makes the medallion look like a 50p piece. He and his wife guess that it was picked up by mistake and dropped outside the Post Office.

The pendant had first been lost 25 years ago, and found again. Later, it was lost again in a house move, and found again. This was the third time that the medallion had gone missing, and Michael and Betty Turner are now keeping it well away from their other coins!

Little Harriet Keen was made very happy too when she went round with her parents to return the pendant. The Turners very kindly gave her an Easter egg and a magazine with a toy fan to thank her for her sharp eyes!





# Nature notes

June is the peak of the wildlife year.  
What might we look for in our parish?

Report by Katy Dunn

June is an amazing month for wildflowers and wildlife. Fluffy, scruffy young birds are being encouraged from the nest as some adult pairs are keen to get on to their second brood. It's a tense time and the reluctant fledglings often need some inducement. House martin parents in particular have a hard time shifting offspring squatters from the nest and will spend several days at the nest entrance calling to the youngsters and offering bits of food just outside their reach. (House martin chicks above)



The hedgerows are alive with activity and colour at this time of year. One of the most majestic sights is the foxglove. They like slightly shaded sites which have recently been disturbed, so you'll often get them in woods that have been thinned or coppiced, rising from a tangle of brambles.

Foxgloves have evolved to attract the bumble bee to travel up the tube of their flower to retrieve the nectar. While there, the bees unwittingly collect pollen on their backs to take to the next flower achieving pollination for the flower.

Beautiful as foxgloves are, be careful not to touch them as every part of the foxglove is poisonous to humans.

shop. Six weeks later she was sat behind her new counter with only a giant log book for company. 'There was no training in those days,' she says, 'They just said: "off you go!"

Fortunately, Liz rose to the challenge and Lane End's post office became a real centre of the community. Previous to her service, the post office had moved around from No.1 The Square (next to McColls) to the Bakery at the top of the row to Can's off-licence and the shop where Tip Top Nails is now.

'It had got so that you woke up on a Monday morning and thought: "Now where is the post office this week?"' said Liz.

## Heart of the community

Liz's reign brought stability. 'It was always the centre of gossip,' agrees Liz. 'People would come in and ask me what's going on in the village and enjoy meeting each other.' Liz also had plenty of interesting characters—one lady insisted on bringing in her prescription week after week. There were also intriguing parcels—a man regularly brought in wrapped bicycles to mail, there were plenty singing toys in the post bag and once a live worm farm. 'I did feel a little

odd about that,' says Liz.

Liz was recently described by parish council Chairman Mike Detsiny as 'the beating heart of the community,' and whilst she will undoubtedly continue to play that role, she will be much missed as a fixture in our village shop.

## Plumridges at Lane End Post Office for 111 years

Whilst we may think Liz gave good service to the Post Office with 20 years in service, there is a precedent in Lane End that no-one could hope to match.

Back in 1856, William Plumridge took over the sub post office at The Old Armchair, a pub on Lane End's high street. His family then ran the post office for the next 111 years.

His daughter-in-law, Mary Plumridge took it on after him in 1904 and, like Liz Connell, was a well-known and respected local figure. Before the



Old Arm Chair p.h. High Street Lane End. c1900



# Lane End Post Office

## Past, present and future

Report by Katy Dunn

Lane End's Post Office has moved from Johnston's butchers in the High Street to the Londis store in Edmond's parade.

Retiring postmistress Elizabeth Connell gave the move her seal of approval by cutting the ribbon at the opening ceremony on 2 May. She was joined by Jack Sparrow and new postmasters Romi and Arti Mediratta.

The move was driven by new Post Office regulations requiring open counters, which would have been incompatible with the butchery ele-

ment of Johnstons' store. This coincided with Liz wanting to retire.

### 20 years' service

When Liz went to the Post Office interview in 1995 she never expected that she would still be postmistress 20 years later, in fact she didn't expect to get the job. 'I was shocked when they said at the interview "you need to be up and running in six weeks."'

Liz returned to Johnston's, which her family had run since 1969, to make speedy structural changes to the



Email: [katyjdunn@btinternet.com](mailto:katyjdunn@btinternet.com) and **share** here any local photos, wildlife stories or interesting nature encounters...

We have many commons surrounding Lane End, but who owns them and what are our rights?

Report by Andrew Mactavish

Lane End is lucky that it has so much common land surrounding it - Handleton Common, Moor Comon, Moorend Common, Bolter End Common, Wheeler End Common and Cadmore End Common. Everyone has the right to wander over common land, but there is far more to common rights than first appears.

To start with, all common land is owned by someone. This ownership often dates back far into history, or might have been bought quite recently. Ditchfield Common was bought by the Parish Council from a private owner only a couple of years ago to save it from the threat of unscrupulous developers. Commons are currently heavily protected, but the Green Belt is being eroded all the time so who knows what a new government will bring.

There was much confusion over ownership and responsibilities to common land before the 1966 Commons Act tried to make some sense of it all. Now the Land Registry records ownership of common



Moorend Common by photographer Clive Ormonde

land. Much of this land is attached to farms or ancient manors, sometimes at some distance from the home territory. The Dashwood estate owns Handleton Common and Bolter End Common was once part of Fingest Manor.

The Land Registry also records the names of people who own houses or parcels of land which have special commoners' rights attached to them. A number of people have the right of 'turbary' - to take turf or peat for fuel, and 'estover', which is permission to collect firewood.

Some even have grazing rights. Lacey's Farm has the ancient right to graze four cows, two horses, four pigs and 12 geese on Bolter End Common, which is owned by Kensham Farm. They have indeed grazed their cattle there in the not-too-distant past.

The regulations introduced in the 1950s to stop the spread of bovine TB put an end to that as herds now have to be kept separate. Different farmers had the right to put cattle on the same common, possibly passing on infection.

Grazing animals on common land is a difficult task anyway as it is illegal to fence commons - it would need an Act of Parliament to do so. These days it would be crazy to let stock roam loose with today's traffic roaring down the B482. But the right still exists and is clearly recorded.

So if in the unlikely case you see one of the Laceys marshalling a flock of geese at Bolter End, they will only be exercising their ancient right. But do count them: they are allowed only twelve!

## Moorend Common

Report by Katy Dunn

The Chilterns Commons Project that has done so much to help our local commons through funding, training and advice comes to an end in July 2015. I would like to thank the Chilterns Conservation Board and Chilterns Commons Project Officer Rachel Sanderson for all her help.

Come and join us on Sunday 21 June for a Big Father's Day Picnic. It's one of many Big Picnics going on around the Chilterns to mark the end of the Chilterns Commons Project. Bring your own picnic from noon and we'll have manly activities such as log lugging, tree coppicing and tug of war (Lane End vs Frieth).

We are not so manly as to picnic rain or shine, however, so if it's wet, we'll probably cancel.

June is orchid time on Moorend Common so do go down and take a walk on South Meadow (the one nearest the Fingest-Marlow road).



*The Clarion – Summer 2015*

## Saturdays

### Regulars

**Coffee Shop**—Enjoy coffee and cake on the first and third Saturdays of the month, 10am-12noon, Lane End Village Hall. The Twinning Association runs the first Saturday in the month, Holy Trinity the third.

### Events

#### 13 June—Lane End fete

13 June Royal British Legion in the village hall. Call in and see what they do.

18 June—Cadmore End School fete, 12-3pm

20 June—Lane End Players Summer Production. Call the box office on 07706 426320

11 July—fun fair Ditchfield Common

18 July—BBQ at Lord Parmoor's Bessemer Cottage, Moor Common 6.30pm. Bring your own drinks and glasses. Tickets 881945 / 881079

15 August—Lane End & District Horticultural Society Show. Tel 881414

16 August—LEYCC playscheme. Tel 883878 to reserve a place

## Sundays

### Regulars

**Parish Communion**—9.30 Holy Trinity Church Lane End (crèche first Sunday of the month)

**Elim service**—10.30 am at Elim Christian Centre, Edmonds Road, Lane End

**Sung Eucharist/Family Service**—11am St Mary's Church Cadmore End

**Morning Service (Methodist)**—11.15am Holy Trinity Church Lane End

**Whistles & Bells dog behaviour school**—9-12noon LEYCC, Tel Jenny 07703 020344

**Sunday lunch**—Grand International Buffet and traditional carvery at The Tree, Cadmore End. £12.95 Book on 881183

**Evensong**—6pm at Holy Trinity Church Lane End

**Lane End Players**—7.30pm Village Hall Tel 07706 426320

### Events

6-21st June Bucks Open studios including various artists in our region. See who's participating at [bucksopenstudios.org.uk](http://bucksopenstudios.org.uk)

7 June—12-2pm, Royal British Legion Rachael's lunch including a Bring and Buy Table. Tel 881079 / 881945

## Thursdays

### Regulars

**Simply Walk**—10am Lane End Playing Field's car park. Walk and chat for 1-2 hours

**Coffee Stop**—Village Hall 10-12noon. Coffee and chat. All welcome, run by Methodist Church

**Lane End Support Group**—second Thursday of the month, 9.30-11.30am, Sure Start Children's Centre at Lane End Primary

**Computers@The Centre**—11.30-2pm LEYCC

**The Drop-In (Social lunch)** - 12-2pm LEYCC

**Four Ends Flower Club**—Fourth Thursday of the month 2pm in Lane End Village Hall. Visitors £5. Flower arranging demonstration, raffle, tea and cake. Contact 482724

**Circle Dancing**—First Thursday of the month, 2pm Lane End Village Hall. Contact Mary Williams 01235 520608

**LEOPAG**—First Thursday of the month 2-4pm LEYCC

**Line Dancing for Beginners.** 7.30-9.30 Frieth Village Hall

**Lane End Players**—8pm Village Hall Tel 07706 426320

**West Wycombe Guides**—7.15pm Piddington Village Hall

**French Refresh and Extend**—8-9.30pm, La Cabane@Samedi, Lane End. Tel 881919

**The Tree, Cadmore End**—lunch and soft drink offer £5.99. Indian buffet £8.99 per person, 6-9pm. 881183

## Fridays

### Regulars

**Circuits**—9.30-10.30am LEYCC

**The Tree**—lunch and soft drink offer £5.99 per person, 12-5pm

### Events

12 June—quiz at Cadmore End village hall. 7.30pm. Call 07766 044005

19 June—Lane End Players' Summer Production. Call the box office 07706 426320

26 June—Holy Trinity Whist Evening. Tel 881913

10 July—Summer Queen at Frieth school, everyone welcome. Tel 01494 881554

24 July—LEYCC Swopsie night. 7.30pm.

31 July—Holy Trinity Whist Evening. Tel 881913

7 August—Race night at Cadmore End Village hall. 7.30pm. Tel 07766 044005

19 August—LEYCC playscheme. Tel 883878 to reserve a place

28 August—Holy Trinity Whist Evening. Tel 881913

10 July—fun fair Ditchfield Common

### ← THURSDAY Events

28 June—Hambleton Valley Gardening visit to The Priory, Beech Hill. Tel 01491 638690

9 July—fun fair Ditchfield Common

18 August—LEYCC playscheme. Tel 883878 to reserve a place

## Noticeboard

### Could you foster a child?

More than half the children in care in Bucks have to go out of the county for care because there aren't enough people coming forward to foster.

There are lots of different ways to foster – respite, emergency, short term and long term. There is excellent support, brilliant training and an allowance provided.

W [www.bucksgov.uk/fostering](http://www.bucksgov.uk/fostering)  
E [firststep@bucksgov.uk](mailto:firststep@bucksgov.uk)

### Volunteers week 1-7 June

The Volunteer Hub at Community Impact Bucks is recruiting for volunteers to work with older and vulnerable adults—contact 0300 1111 250 or email [gillian@communityimpactbucks.org.uk](mailto:gillian@communityimpactbucks.org.uk)

Lane End Youth and Community Centre needs volunteers to help at its Thursday lunches. Tel Emma on 883878



## National Trust

### Come and join us at beautiful West Wycombe Park

West Wycombe Park could not open its gates to our members or the general public without the support of our volunteer team who work in the Information and Ticket Kiosk, provide tours on weekdays as Guides, and who look after the house on Sundays as Room Guides.

This year we need to expand our Visitor Reception team and are looking particularly for help on Tuesdays and Wednesdays in our Information and Ticket Kiosk, meeting and greeting visitors, handling admissions, sales and till operation.

This role is crucial in making every visitor welcome and helping them enjoy all aspects of their visit to West Wycombe Park, Village and Hill. In return you will be joining a sociable and dedicated team, meeting people from all walks of life and making new friends.

If you would like to know more please contact me for a chat on

**07768 065370 or email me at [christine.hathaway@nationaltrust.org.uk](mailto:christine.hathaway@nationaltrust.org.uk)**



Your day by day  
guide to local  
meetings, clubs  
and events



# What's On?

To include your event or group meeting (free) email: [katydunn@btinternet.com](mailto:katydunn@btinternet.com)  
Please also be sure to inform me of any changes

## Mondays

### Regulars

**French Beginners classes**—9.45-11.15 La Cabane at Samedi in Lane End. Tel Denise 881919

**Simply Walk**—10am Meet Lane End Playing Field's car park. Walk and chat for 1-2 hours

**LEOPAG (50+)**—10.30-12.30am coffee pop-in LEYCC, Edmonds Road, Lane End. Tel: 883878

**Gentle Exercise for over 60s**—2-3pm LEYCC

**Baby Welfare Clinic**—2-4pm, SureStart Centre, Lane End Primary School

**French refresh and extend classes**—12.30-2pm La Cabane at Samedi in Lane End. Tel Denise 881919

**The Tree**—lunch and soft drink offer all week £5.99 per person, 12-5pm

**Lane End Parish Council Meeting**—First Monday of the month, 7.30 in Lane End Village Hall, all welcome

**Lane End Evening WI**—Last Monday of the month at 8pm in Lane End Village Hall

**Pilates with Lauren**—5.50 and 7pm LEYCC £50 for 6 week course. Tel 07709 430634

**Bridge Club**—7.30pm Lane End Village Hall

### Events

15 August—LEYCC playscheme. Tel 883878 to reserve a place

1 June, 6 July, 10 August. Lane End Parish Council meeting, Lane End village hall.

## Tuesdays

### Regulars

**Parent & Toddler Group**—9.30-11 Lane End Primary School. Tel Sure Start 447110

**The Tree**—lunch and soft drink offer £5.99 per person, 12-5pm

**West Wycombe WI**—Third Tuesday in the month (except August) 2pm in West Wycombe Village Hall. New members and visitors welcome. Tel Janice 881049

**Hambleden Valley Gardening Club**—7.30pm, First Tuesday of the month, Skirmett Village Hall. Tel 01491 638690

**Bingo** — 7.30pm Sycamore Room Lane End Village Hall

**Senior youth club**—LEYCC, 6.30-8.30, call Emma for info on 883878

Circuits—Frieth village hall, 7pm

### Events

7 July—Pop up archive at Frieth school showing the history of the school. Tel 01494 881554

1 September—Coach trip to London Zoo with LEYCC. £25.50 per adult and £21.00 per child. Tel 883878 to reserve a place.

## Wednesdays

### Regulars

**Music & Rhymes**—9.30-10.15 Lane End Primary School. Tel Sure Start 447110

**The Tree**—lunch and soft drink offer £5.99 per person, 12-5pm

**Bridge Club**—1.30pm Lane End Village Hall

**School of Traditional Medieval Fencing**—7.30pm Lane End Village Hall

**Quiz Night**—8.30-pm at The Tree in Cadmore End

**Junior youth club**—LEYCC, 6-8pm. call Emma for info on 883878

**NEW Pilates with Lauren**—6.30 and 7.30pm Frieth village hall £50 for 6 week course. Tel 07709 430634

**Beginners Jive classes**, Frieth village hall, doors open 7.30pm. £5 per class. Tel 07947 106607

### Events

17 August—LEYCC playscheme. Tel 883878 to reserve a place