

Useful Telephone Numbers...

Parish Clerk—Hayley Glasgow	01494 437111
Lane End Surgery	01494 881209
Lane End Pharmacy	01494 880774
NHS Direct	111 / 0845 46 47
Lane End Holy Trinity Church	01494 881913
Lane End Primary School	01494 881169
Little Explorers Nursery	01494 881169
Lane End Village Hall	07470 303163
Frieth Village Hall	01494 881176
Lane End Youth & Community Centre	883878 / 07932 326046
Elim Christian Centre	01494 882587
Lane End Oasis Centre	07592 587554 / 881999
Cadmore End Village Hall	01494 881735
Cadmore End C of E Church	01494 881913
Cadmore End Primary School	01494 881460
Bucks County Council	01296 395000
Wycombe District Council	01494 461000
Highways On Call	0845 2302 882
Flytipping	0845 330 156
Police—non emergency	101
Wycombe General Hospital	01494 526161

Grouse & Ale

everything you need in an English country pub



- from light lunches to full 3-course meals
- Cask Marque accredited real ales
- extensive selection of wines – 20 by the glass
- function room and private dining area for parties of up to 50 dining or 80 buffet
- courtyard dining and drinking
- wi-fi internet throughout

Gastro Pub of the Year
Award Winner





Grouse & Ale, High Street, Lane End, HP14 3JG
01494 88 22 99 • www.grouseandale.com

little explorers nursery

Choosing the right nursery for your child is essential. At Little Explorers Nursery we treat each child as an individual, nurturing their talent, skills and confidence so that they can flourish. We have a bright and spacious setting. Inside, there's sand and water, messy play, painting and crafts, cooking, role play and music. There are quiet areas too for reading, computers and maths. Outside, the Nursery has two play areas: one for riding bikes and scooters and another where we enjoy playing, climbing and digging, growing fruit and vegetables and exploring the log pile for mini beasts!

The Nursery is led by a qualified teacher supported by experienced and qualified staff. Full or part-time places for 2, 3 and 4 year olds. Call us to arrange a visit on 01494 881169 or email us at office@laneendprimary.co.uk

"Children make a good start in the Early Years Foundation Stage and thrive in the caring and stimulating classes."

OFSTED April 2014

Little Explorers Nursery at
Lane End Primary School
Edmonds Road, Lane End
Bucks HP14 3EJ



The Clarion is the Parish of Lane End's non profit -making magazine, for the sharing of information about Parish activities. Neither the Editor nor the Parish Council, whilst sponsoring the magazine, takes responsibility for the statements and/or views expressed herein.

We welcome any news or diary dates from community organisations and letters from individuals. The next copy deadline is 1 November and the next issue will be out in the first week of December.

Send copy to katyjdunn@btinternet.com

Or call Katy on 01494 883883 for more info

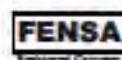
The Window Doctor

CARE & REPAIR FOR ALL YOUR UPVC & ALUMINIUM WINDOW & DOOR PROBLEMS

- Replacement of broken down sealed units - misting up inside glass
- Adjust front & back doors that do not shut
- New handles, hinges and door locks
- Replacement of patio door wheels
- New security handles with keys
- New door panels and cat flaps
- New Georgian style or leaded style sealed units
- All Insurance work • Burglary damage • Servicing



PLUS INSTALLATIONS OF NEW UPVC WINDOWS & DOORS



Call us for a FREE Survey and Quotation.

No call out charge



Friendly Family Established Business

Cowling & Co.

Mobile: 07860 435742

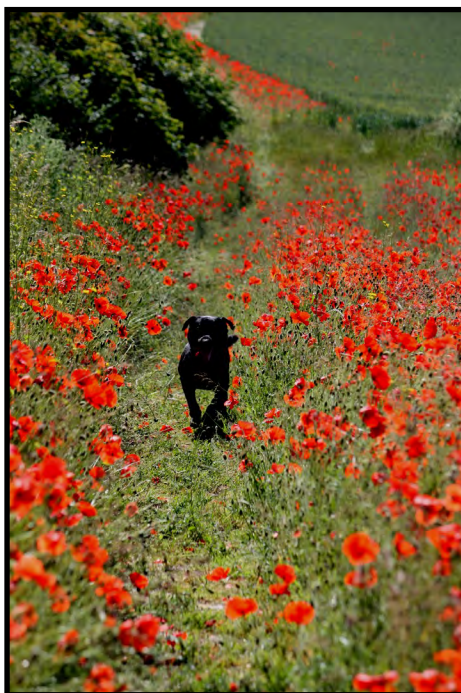
Tel/Fax: 01494 483567

email: [windowdoctor@cowling.plus.com](mailto>windowdoctor@cowling.plus.com)

www.windowdoctor.co.uk

A look back at
Summer 2015
pictures sent in by readers

Poppies in a field by Bottom Rd in Radnage, taken by Allen Lewis



Children playing on Moorend Common, taken by Katy Dunn

Foxgloves on Ditchfield Common, taken by Pauline Thomas



From the Editor

If this issue of The Clarion is dropping onto your doormat a week or two later than normal, I apologise. The long school holiday has messed up my schedule. My biggest apologies to Cadmore End, which had an event early in September that missed out on publicity.

Next time I should be back on track, so do send me all your info in good time for inclusion. I welcome any suggestions for articles, photos of our area looking beautiful, or news of any births, deaths or marriages. (See p54 for details.)

New seasons are always exciting, but autumn is particularly fun. The red and gold of falling leaves, blackberry picking, apple days and the smell of wood-smoke in the air are things I look forward to. For kids, the bittersweet start of the new school term is tempered by the thrilling prospect of hallowe'en and bonfire night before too long. Enjoy our lovely villages in all their autumn glory.

Send me an email on katyjdunn@btinternet.com or call 883883.

Katy Dunn, editor

Advertise in the Clarion

Connect with your local community,
reach 1700 households in the area

£55 half page per issue

£90 full page per issue

Discounts for multiple issues

Contact Gill Barrett on gill.barrett@btinternet.com / 881822

CEDAR GYM

Route 48 (Arriva) Monday - Saturday, at roughly hourly intervals during the working day, runs from Lane End to High Wycombe to Great Missenden.

Route 28 (Carousel) Monday - Friday, fills in some gaps in the route 48 service. Runs between Lane End and Asda. Some buses continue through Lane End to Cadmore End and Stokenchurch. It does not run on Saturday.

Route 32 (Arriva) Evenings only, Monday - Saturday. Runs to and from High Wycombe via Asda.

Route 48A / 48 (Vale Travel) Sundays only. Runs between Lane End, Cadmore End, Stokenchurch and High Wycombe.

Bus Stops The bus services serve several stops as they pass through Lane End and Cadmore End. Information sheets at each stop list the time and route number of each bus, plus its destination. This can be confusing because route 48 buses are shown going to Great Missenden, but they **do** go through High Wycombe. In this guide, departure times of buses to High Wycombe are shown from the Archers Way stop - at other stops the times may be a minute or so earlier or later, but these can be found at each stop.



Let's face it, this isn't going to happen. Cleaning up after your dog is your responsibility.

The situation is getting worse on the common around the church, on the playing fields and even on our walkways and pavements.

If you wouldn't want to step in it, don't leave it for others to.

Please clean up after your dog

Bus times

Parish councillor Nigel King has kindly attempted to make some sense of the chaos that is the Lane End bus service. Many thanks and hats off to him. If you have any suggestions or corrections, please contact him on: nigel.sandra@btinternet.com

Route 28 in red Route 32 in green

Bus times from Lane End to High Wycombe

Mon to Fri 6.55am 7.20 **8.03 (8.15 non school days)** 8.51 **9.12** 10.00
11.01 **11.01** 12.00pm 1.00 **1.01** 2.00 3.00 **3.31** 5.43 **7.09pm 8.09 9.08**
10.08

Saturday 7.53am 9.00 then hourly till 4.00pm **then 7.08pm 8.08 9.08**
10.08

Sunday Vale Travel buses 10.20am 12.20pm 2.04pm 3.44pm 5.44pm

Bus times from High Wycombe to Lane End

Mon - Fri **7.00am 8.45** 9.40 10.40 **10.45** 11.40 12.40pm **12.45** 1.40pm
2.40 **3.15pm 3.55** 5.20 **5.30** 6.10 **6.40pm 7.40 8.40 9.40 10.40**

Saturday 9.40am then hourly till 3.40pm 5.40pm **6.40pm 7.40 8.40**
9.40 10.40

Sunday Vale Travel buses 9.50am 11.50 1.50pm 3.50 5.35pm

Cadmore End services (no buses on Saturdays)

Mon - Fri to H W **7.59am 9.08 1.07pm** **From H W** **7.00am 12.45pm**
3.55pm 5.30pm

Sunday Vale Travel buses. Times from Cadmore End 10.15am 12.15
2.08pm 3.48 5.53pm

Your Parish Council



laneendparishcouncil.org.uk

Parish Clerk ♦ **Hayley Glasgow**

Tel: 01494 437111

clerk@laneendparishcouncil.org.uk

74 New Road

Sands

High Wycombe

Bucks HP12 4LG

Councillors

Chairman: Cllr Michael Detsiny

Vice Chairman:

Cllr Graeme Coulter

Cllr Mandy Dunning

Cllr Jane Osborn

Cllr Colin Harries

Cllr Lorraine Smith

Cllr Keith Wright

Cllr Callum Stewart

Cllr Nigel King

Cllr Mandy Sarney

Cllr William Hunt

Lane End Parish Council report by Hayley Glasgow

Up-coming Meetings

The meetings will start at 7.30pm in the Sycamore Room of the Lane End Village Hall on the following dates –

Monday 7 September

Monday 5 October

Monday 2 November

Monday 7 December

All Parishioners are welcome to attend.

Planning Applications

Planning Applications relevant to Lane End Parish Council are updated on the Parish Councils website www.laneendparishcouncil.org.uk every Monday from the official list of verified applications supplied by WDC. Whilst the Parish Council does not have the power to determine applications, its local knowledge is sought on each and every application.

View planning applications for the Lane End area online at:
laneendparishcouncil.org.uk

Street lights

To report a faulty street light please note the column number, the road where the street light is situated and the nearest property and report to the Clerk - Hayley Glasgow 01494 437111 /

clerk@laneendparishcouncil.org.uk

Pot Holes / road repairs

You can track and report pot holes/ road repairs through the Buckinghamshire County Council website <http://transportforbucks.net/report-it-pothole.aspx> or you can call them on 01296 395000 / 0845 3708090 Monday to Thursday 9am-5.30pm and Friday 9am-5pm. If you consider a pothole to be dangerous or an emergency, please call BCC on: 01296 382416 (9am-5.30pm Mon-Thurs 9am-5pm Friday) or 01296 486630 (out of hours and weekends).

Lane End Doctors Surgery

The Marlow Medical Group has an established Patient Reference Group which all patients are free to join. The surgery will be working closely with the group to keep them updated on general information. The next Patient Group Meeting is Monday 14 September at The Marlow Doctors House in Marlow. Space is limited so they ask that attendees email their Patient Services Manager, Helen Butterfield at helen.butterfield@nhs.net

Allotments

There are three allotments sites in the Parish, Chalky Fields, Bunkers and Sandyfields.

If you would like more information about allotments please contact the Parish Clerk.

Talk to us?

We would love to hear your comments / suggestions / complaints or compliments. Please contact the Parish Clerk Hayley Glasgow 01494 437111 / clerk@laneendparishcouncil.org.uk

The Parish Council is your first point of call for any issues that concern you to do with Lane End, Cadmore End, Wheeler End, Bolter End and Moor End.

We are here to help.

Contact your Parish Clerk Hayley Glasgow on:

01494 437111 or
clerk@laneendparishcouncil.org

Frieth Hilly

10k & 5k run
Sunday 18th October 2015



Frieth Hilly

Sunday 18 October 2015

Join us for the Frieth Hilly, a challenging, mixed-terrain run along winding woodland paths and country roads with stunning views. Run 10k or 5k

Race starts at Frieth school at 10am.

Pre-book your place at friethhilly.co.uk - we nearly reached our limit last year

JHC ELECTRICAL SERVICES & Property Maintenance

James Clark

All types of Electrical works undertaken

Rewires, in/outside lights, down lighters, new fuse boards, additional sockets, security lighting, fault finding and CCTV City and Guilds/NICEIC Part P Qualified/IEE 17th Edition

All aspects of property maintenance carried out

Mob. 07720 598860 Tel/Fax. 01494 881766

The Dog House, 10 Elwes Road, Lane End, Bucks.

Email: jhcelectrical25@aol.com

www.jhcelectrical.co.uk



Fully Insured and all work Guaranteed.

Honest, Local, Reliable Tradesman.

Established 12 years

A member of the Bucks County Council Trading Standards

"Buy with Confidence Scheme"



Ask the Vet: We could ask the vet how babies compare to puppies! Clare is rather busy at the moment having welcomed a beautiful baby girl to her family on 2 June. Clare and Michael's daughter is called Maya Jaime Mary Hamilton. Clare will be back next issue.



John Stanley Carr

Back in Autumn 2014 we announced local Lane Ender John Carr's 100th birthday. It is with sadness that we now announce his death on 8 August 2015. His daughter Pauline says: 'He was a wonderful, kind and funny man, a people person who enjoyed a very happy life and then slipped gently away.'

If you would like to announce any births, deaths or marriages, please email me at katyjduunn@btinternet.com. Maximum 50 words please.

D.J. MACLEOD

FORESTRY, FENCING AND ESTATE CONTRACTORS

Supplier of quality seasoned firewood

Tree and hedge planting, surgery, felling, maintenance,
grass cutting and scrub clearance

All types of fencing and gates

Supplier of wood chippings

Telephone 01494 882901

Mobile 07850 724023

www.donlogs.com

Email: djmac@globalnet.co.uk

Cedar Cottage
Parmoor
Henley-on Thames RG9 6NN

The Peacock

Report by Katy Dunn

Lane End Parish Council has added The Peacock pub in Bolter End to Wycombe District Council's list of 'assets of community value'.

Local authorities are required to keep a list of all assets of community value. If an owner of a listed asset wants to sell it they have to notify the local authority, who then has to notify any interested parties.

If community groups are interested in buying an asset they can use the

Community Right to Bid to 'pause' the sale, giving them six months to prepare a bid to buy it before the asset can be sold.

It does not allow the community to determine what the owner does with the property as planning policy determines permitted uses for particular sites. However, the fact that the site is listed may affect planning decisions as the Local Planning Authority may consider listing as a material consideration if an application for change of use is submitted.

Contact the parish clerk, Hayley Glasgow on 437111 for more info.



Little Oaks Montessori Nursery School

Little Oaks Montessori Nursery School is a small independent nursery school with over 25 years experience. We provide education and care for children aged 2-5 years. For more information please call 07774 670820

Church Road, Cadmore End, Bucks HP14 3PJ

Lane End Fete

Report by Bob Nix

The rain came overnight on 12 June and the early morning of the 13th, which is unusual for fete day. However, we persisted, and the team of volunteer helpers worked valiantly. We moved tables and chairs, erected gazebos, built the zippy dipper and created the arena. By the start of the fete at 1.30pm the many people involved in the running of the event had put together the side shows and attractions which make the fete.

The weather improved and the good people of Lane End and surrounding areas came to support us. So many people worked hard on the day and it is unfair to single anybody out so we offer our sincere gratitude to you all. We offer a special thanks to the businesses who support the fete so well year in year out.

The prize winners in the dog show were:

Waggiest tail - 1st Oliver Westby with Ruby, 2nd Julia Phaff with Chloe, 3rd Cody and Maddie with Almo.

Best Ears - 1st Margaret Pullen with Poppy, 2nd Louise Meakes with Fergie, 3rd Sal and Cassidy Dunn with Davy.

Staircases, Doors & Windows, Conservatories From Raymond Good (Joiners) Limited



Any bespoke joinery work undertaken - Designed, manufactured and installed



Raymond Good (Joiners) Limited is a specialist provider of joinery solutions catering for the new build, trade and domestic markets. Established in 1962 with over 50 years' experience, we offer an extensive range of products, and can advise on which we feel would best suit the individual's house, style and budget. Plus being a totally independent company, our advice is also completely unbiased!



Raymond Good (Joiners) Limited Myer Farm, Oxford Road, West Wycombe, HIGH WYCOMBE, HP14 3BA
Tel: 01494 881789 Fax: 01494 880789 Email: sales@raymondgood.co.uk
Call into our showroom - Open 9am to 4pm Monday to Friday.
Contact us today to discuss your wood, aluminium and PVCu product requirements

LANE END SUPPORT GROUP

For Parents and carers of children with special needs and disabilities. Come and join us for friendship, help and advice at our coffee mornings on the second Thursday in the month.



Dates for autumn 2015 (Thursdays between 9.30am and 11.30am)

10 Sept

8 Oct

12 Nov

**Located at the Sure Start Childrens Centre,
Lane End Primary School, Edmonds Road, Lane End, HP14 3EJ**

For any enquires please contact Lo Smith

01494 881147 lorrainesmith00@gmail.com



Dave's Mystery Plant

I grow from a bulb but I'm not a spring flowerer. I have varieties that display from June to October, depending on which you choose. Most are 3-5ft high, presenting glorious blooms of reds, yellows, oranges and whites.

Many scented forms are used in cut flower displays, and the perfume is overwhelming. I like a sunny spot and free draining soil. One of my biggest bug bears is a little red beetle, named after myself, about the size of a ladybird, which eats holes into my leaves.

What's my name?

Answer: Lily



Plumbing ▶ **Bathroom** **Heating** ▶

Gas Boiler – Service/Repair
Plumbing – Taps/Leaks
Heating – Radiators/Controls
Bathroom – Taps/Showers

Local Friendly Service
Call Paul

t: 01494 482176 m: 07883 341496



Dog the Judge would like to take home - 1st Jack with Penelope, 2nd Charlotte with Morris, 3rd Michelle with Callie.

After the success of the day nearly £3,000 pounds will be added to the village hall account to help maintain and run the village hall for the good of the community. As next year's fete approaches it is a good time to look at any improvements we can make and the committee always try to improve the enjoyment of all. We'd like to bring back some of the traditional side shows of the past, however to do this we need more helpers. Can you give us an hour on fete day? If so, ring Bob on

01494 881000

or contact him on
nix682@btinternet.com.

HELP! for doughnuts.

Does anyone have a Kenwood Food Mixer or similar machine in good working order that they no longer use?

I need one for the Doughnuts at the village fete. Unfortunately mine gave up the ghost and started smoking on the last mixing at the fete. Doing it by hand is not an option!

Please contact Margaret Scott on 881298.

Royal British Legion

Report by Andrew MacTavish

In May, the Legion joined the national celebrations of the 70th anniversary of VE Day with a splendid lunch at the Village Hall in conjunction with the Twinning Association. It was a sell-out; it would have been difficult to squeeze another person in.



The Hall was heavy with bunting and flags, there were Legion pencils and key rings for all, a quiz with prize oranges for the

winners (so 1945-ish!), music of the period and an extract from one of Churchill's speeches, song sheets for all with the Vicar on the piano, and a Britannia wrapped in a Union Flag.

There were even small flags for everyone to wave and, to add to the hilarity, every single one was mounted upside down (The national Legion contractor must have had a very red face!). Yes, and the meal of beef or salmon was splendid - you know the chef really cares when you see that there is horseradish cream. All the preparation was worth it, and we are grateful for the chance of

sharing such an event with the Twinning Association.

The annual July barbecue was another memorable event in July at Lord Parmoor's Bessemer Cottage. We wined and dined in the beautiful setting of the garden overlooking the Chiltern landscape, and sang again, this time to our entertainer's lead of hits of the 60's and 70's. We now look forward to our Christmas dinner at Parmoor on 11 December.

While we are always happy to have guests at our events, some people are sad that they missed things, and the obvious answer is that they

should join the Legion and receive information well in advance. The majority of our members have not been in the forces now; they are just supportive of the services at a time when the world seems to be a more disturbed place. We ought to have new faces on the committee, and, as Poppy Day approaches, we could do with a few more people who are happy to spend just a couple of hours collecting.

Is there anyone who can run round the new Clayton Road? The village looks to us to supply their poppies. If you can, ring Andrew MacTavish on 881948.

sun to harden their skins before storing them away.

Now is the time I sow spring onions (White Lisbon) and this is also when I plant my lettuce to avoid them bolting in the summer heat. Autumn planting onions will be set out at the end of the month and green manure used in the empty beds to improve the soil for next year.

Favourites

Magnolia grandiflora is a large evergreen shrub/small tree which can reach 10 metres or more, and has large glossy green leaves, not dissimilar to those of the Laurel.



This is quite unlike its magnolia relatives which are spring flowering and deciduous. The flowers are large fragrant white cup shape blooms, which come out intermittently through Summer to Autumn.

Melanie Mathews ad

ORNAMENTAL LANDSCAPES

~Former Royal Horticulturalist~

Is available for

**Garden Design, Build,
& Maintenance Projects**

Dave Dunbar

(National Diploma in Amenity Horticulture)

Large or small jobs undertaken including.....
Patios, Walls, Paths, Decking, Turfing, Planting, Hedge Cutting &
Fencing, Ponds & Waterfeatures, Pruning & Tree Surgery,
Re-vamping unsightly borders, etc.

Please view our photos on our website

www.ornamental-landscapes.co.uk

01494-883846 or 07833-684065

Gardening

with Dave Dunbar 



Harvest time on the allotment

After taking a look at my notes I can confirm we've had a dry first half of summer. It was only at the end of August that an all day session of continual rain made any impact and reached down to deep rooted trees and shrubs, yet no hosepipe ban again this year!

Seasonal Top Tips

It's always good to plan ahead and although we're still hoping to enjoy an Indian summer it's worth prepping a few things to benefit in Spring. Apart from bulb planting, now's the time to plant bedding biennials, which will settle in the ground during the autumn, over-winter and display a mass of flowers in spring. The name biennial just means a two year life cycle, yet many will live longer and can be dug up and saved for the subsequent years. Such plants include pansies and polyanthus, which are widely used and also give some flower in autumn.

There is also the double daisy (Bellis Perennis in variety) with fluffy pink/

white/red displays, and wall-flowers. These are dug up and sold in bunches without soil looking rather sad, but they flower well in spring and display considerably well with bulbs inter-planted.

As usual now's the time to give the lawn a good autumn feed to strengthen roots to over-winter ready for next year. Cut down unsightly finished herbaceous plants, but leave anything tender to help protect through the winter.

Nath's Allotment

It's Harvest time!

Chilli peppers, runner beans, sweetcorn, main crop potatoes, beet-root, carrots, courgettes and onions....you name it, everything has been growing like mad for the last few weeks.

September is the end of summer, hopefully if the weather holds the harvesting can continue in the dry. It helps to lift the potatoes and onions and leave them for a few hours in the

Hambleden Valley Gardening Club

Report by Janet Collins

We had a really special visit in June to a private garden – The Mill Barn in Weston Turville. This beautiful two-acre garden is packed full of interesting and unusual plants and vibrant plantings. It has been lovingly created by the owners over the past 20 years from a bare field.



over the centuries. We could then just wonder through the gardens with its walled garden and rose garden and along wooded walks by the river Loddon.

Our Plant sale in early May went very well and was well supported by members, friends and the public who all supplied and bought plants. This event is important to the Club as all the money raised goes towards the running of the club and paying for Speakers.

We still have two final garden visits for the summer/autumn season which you can see listed on the events page. Our new season of talks will then start in October with a wide range of diverse and interesting topics to entertain and inform.

New members are most welcome, please call 01491 638690 or 01491 638691.

We were lucky with the weather that day and we ended the visit with a splendid tea in their large conservatory. We followed this up with a garden visit to The Priory in Beech Hill outside Reading. This garden is in a wonderful setting surrounding a C12 Benedictine Priory.

The introductory talk given by the owner was most interesting, informing us of the history of the house and how the garden had developed



🐸 Lane End and District Horticultural Society

Report by Trevor Perrin

Lane End's horticultural show was held this year on 15 August with a fine array of home-grown fruit, veg and flowers and some delicious-looking baking. Competition was as good-naturedly fierce as ever.

The winners were Yvonne Hanson, Gladys White, Robert Hopkins, John Youg, Ros Hilborne, Michael Kilby Anna Bacon, Penny Barnett Mrs G Wales and Mrs J Smith, Liz Plumridge, Mrs C Fowler, Tony Messenger, John Young, Mr R Wales and Messrs Ogle & Carter won the Allotment Champion Cup.



The Bristow Trophy for the best vegetable or flower exhibit in the show was won by Mrs Liz Plumridge for her beautiful bright purple and yellow daisies (pictured above).

🐸 Frieth Natural History Society

Report by Alan Gudge

Frieth Natural History Society Open Day on **Sunday 4 October** is a big day for local wildlife and we hope you will share it with us. It is now 20 years since Frieth Natural History Society was set up and we are holding an Open Day in Frieth Village Hall to display much of the wildlife we have seen including many special discoveries.

There will be plenty of information and pictures plus some models of wildlife – the biggest glow-worm and Stag beetle you have ever seen – and films of local wildlife to watch.

Whatever your interests: wildflowers, birds, butterflies, moths, fungi, mammals and more, there will something to see. There will also be wildlife related items for sale.

Entry is £2, children under 12 free and the event is open from 11.30am-3.30pm. If you are feeling peckish or thirsty there will be excellent appetising refreshments

available. Our aim is to provide interest and fun for adults and for children. We hope you will put the date in your diary and come along to help us celebrate local wildlife.

Ask the: plumber

with Bill Blake 🐸



Bill, is it possible to have a hot outside tap?

The first time I was asked this question I was astounded.

Even as a plumber, I'd never thought about a hot outside tap as a possibility. Once I'd got over my initial surprise (about 10 seconds), I asked why a person would want a hot outside tap.

The two reasons I was given were totally reasonable:

- 1) to wash the dog in comfort and
- 2) to take the chill off the kids' paddling pool.

Since then, the answer has always been a resounding 'Yes! No problem.'

You can even have an outside shower if you want!

Bill Blake, Plumber

Your friendly, trustworthy and house-trained' local plumber

Happy to take on all your household plumbing tasks, from mending a dripping-tap to installing your new bathroom.

No callout charge, No VAT



Phone: 07762 807767

Based in Wheeler End
City & Guilds Qualified

Turning now to more personal matters, this issue of The Clarion is likely to land on readers' doormats in September 2015, which will be just 60 years since Alison and I married and started farming at Kensham Farm.

Remember that in 1955 if you took a £1 note to the garage when you filled the car up with petrol you would have been supplied with 4 gallons (18 litres) of petrol and still have received some loose change.

Bryan and Alison Edgley started farming Kensham Farm at Cadmore End in 1955.

Their son, Charlie Edgley, manages the arable crops for the family partnership—around 2,300 acres, mainly of milling wheat, centred on Kensham Farm but including rented fields between West Wycombe, Sands, Booker, Fingest and Lane End.

www.kenshamfarms.com

Frieth Natural History Society Open Day

Sunday 4 October

Frieth Village Hall

**11.30am-3.30pm. For info call
Alan Gudge on 881464**



**Laceys Family
Farm shop and
butchers opens
1 Dec—see p40
for details**

LACEYS
FAMILY FARM

great
taste

Prisclean

Domestic & Commercial Cleaning Services

We also offer Carpet Cleaning, Garden Tidy,
Pre/End Tenancy Cleaning and One-off Cleans.

Friendly Local Service / Competitive Prices / Fully Insured

Tel: 01494 882038 **Mobile:** 07743 491814

Visit: www.prisclean.co.uk **Email:** info@prisclean.co.uk



Bradenham Bolt

27 September 2015



10k trail run with mud, obstacles, hills and thrills in the Chilterns countryside

**Starts 10am 27 Sept at the National Trust's
Bradenham Estate, near High Wycombe, Bucks**

Entry £15 via website ntbradenhambolt.org.uk

Or email matthew.shrimpton@nationaltrust.org.uk

Footpath Report

by Margaret Adnitt

How well do you know the commons within our parish of Lane End? We have seven Commons in total, all of which have their own characteristics, so do go and explore them.

Ditchfield, Moor and Moorend Commons lie to the south of the village while to the north are Handleton and Wheeler End Commons. To the west is Bolter End Common and to the north west is Cadmore End Common lying both north and south of the M40.

Commons are Open Access land – freely open to all. However, lying to

the east of the village is Widdenton Park Wood, a heavily wooded area on private land belonging to the West Wycombe Estate. Access is permitted only on waymarked footpaths and only by walkers on foot.

On no account are bicycles, and certainly not motorised bikes, allowed access at any time. Please abide by these laws – and walkers – please keep to the definitive footpaths.

Finally, my grateful thanks to those who, in ‘adopting’ a footpath, have helped to keep our paths clear and walkable during the growing season.

My special thanks to the unknown person who cleared the western end of the ‘valley’ footpath on Wheeler End Common.

different yields. The best parts of the fields are those in which the soil type is predominately clay with humus able to retain moisture. Other parts of the field with lighter sand or gravel soils dried out too early this summer. On the best parts of Niddles, the yield was up to 4 tonnes per acre, whereas on the more gravelly parts of the Bigmore Farm fields the yield was only 2 tonnes per acre. Motorway Field, on the right of the road from Lane End to Sands, yields reached nearly 5 tonnes per acre.

Profit from the crops will be influenced by growing conditions, but even more by the state of the global market place. Wheat can be exported to other countries quite cheaply by sea, and so large tonnages are traded internationally.

The value of the wheat which we sell is controlled by the world wide supply and demand situation, rather than by English weather affecting home grown crops.

Wheat sold by us through our farmer-owned and controlled grain marketing co-operative, Openfield Ltd, had peaked at about £220 per tonne in 2012/13 but is currently only worth £120 per tonne.

These peaks and troughs in the global market are shown on the graph.

This high finance of international commodity trading is a far cry from our efforts in actually growing wheat on these fields in the Chiltern Hills, but it is effectively the factor which determines whether we will make a profit, or incur a loss, from growing crops on our farm.

Similarly, the value of milk sold on the wholesale market in the UK is now below the cost of production, a situation which can only carry on for a limited time.

Current political thought is that free market conditions will balance supply with demand – but many of we farmers have doubts that this will provide long term stability of food supplies which have been produced to the high standards of British farm produce. If consumers feel the same, then please make a point of buying British locally-produced food whenever possible.



alison kenny
garden design & renovation

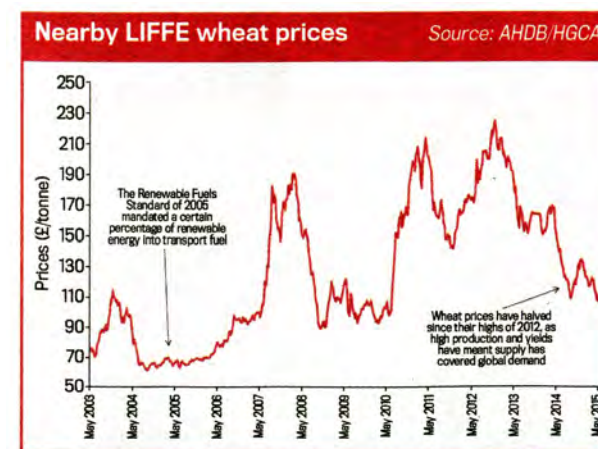
A garden can be many things.

It can be an extension of your home, an area to entertain or simply a play area for the children. Our philosophy is that whatever your garden is used for it should always be an area of great beauty.

We can help you whatever the size of your garden. We can provide a complete redesign or an improvement to a specific area. Whether your style is contemporary or traditional we will create a bespoke design that will give you a garden that you will love.

Call us to book a free consultation 07903 195180

www.alisonkennygardens.co.uk | info@alisonkennygardens.co.uk | 07903 195180



On the land

with Bryan Edgley 



Harvest time in the fields

Local traffic congestion is likely to have been caused in recent weeks more by tractors than by the school run, for this is the busiest time of year for arable farms. Harvest work is immediately followed by autumn seeding.

The photograph was taken during the first week of August, when we were harvesting wheat on our field known as Niddles. This field and its neighbour, just off Bigmore Lane, have shown up their different soil types thanks to this summer's unusually low rainfall. The wheat on the poor parts of the fields ripened earlier and with lower yields than on the rest of the field. The total rainfall shown by our rain gauge at Kensham Farm

has averaged 865mm (34 inches) per year over the past ten years, but over the four months from March to June 2015, in which the crops put on most of their growth, rainfall was only 168mm (6.6 inches).

The combine harvester is fitted with a computer operated monitoring system, which continuously checks that all the thrashing drum clearances and sieve settings are set to minimise grain losses, and it also continuously measures the yield of grain. This has accurately measured the



I am always looking for willing volunteers and particularly, at this time, somebody from Cadmore End village

who might help in looking after the footpath in Pound Wood.

Do contact me if interested.
Margaret Adnitt 882609

Head and body pond on Cadmore End Common



Phil Spackman Pest Control Services



Extermination or humane removal of moles, rodents, wasps, flies, fleas and other insects.

All domestic, commercial and agricultural work undertaken

RSPH level 2 qualified

For a discreet, professional and fully insured service, please call Phil on

Tel: 07947 819554

01494 528240

phil.spackman@ntlworld.com



Lane End Action Group

by Jil Runge

We continue to work hard on generating more sports activities at our Playing Fields in Lane End.

Chairman Mark Lockwood along with his partner, Anita, and Stewart George (treasurer) have worked very hard and we now have an Under 15 football team. They are affiliated with Wycombe & South Bucks Minor Football League. Thanks to LEPC they now have a very smart strip.

The team played their first friendly

match in July. Although our team lost to Seer Green, much experience was gained by this young enthusiastic side, not to mention some of their supporters, as well.

The season starts on 6 September. There will be nine teams playing. We hope as many of you who are able will come and support our enthusiastic lads on Sundays.

Plans are afoot to try to introduce more girls. Members of our Group will be visiting Tip Toes Dance School and the Youth Clubs to see if there are any interested girls. If any girls are interested in football please contact Mark Lockwood on his



ASPECT CARPENTRY

Reliable and professional service for 12 years in the local community

Free estimates and competitive prices

City and Guilds Qualified

Full insured, all work guaranteed

Internal/external doors

New windows fitted

Kitchen and bedrooms

Solid wood and laminate floors

Staircase refurbishment

Call Duncan Frost

01494 880540 /

07811 596 304

aspectdf@aol.com



Nursery Places

An exciting place to play and learn

Call us on 01494 881460

Our nursery is for children who will turn 4yrs between 1 September 2015 and 31 August 2016. We can offer up to 13 places for this year group. Do come and visit us.

Call **01494 881460** or email **office@cadmoreend.bucks.sch.uk**

cadmoreendschool.org/

Frieth Pre-school

Freedom to be me, to explore who I can be

We are a pre-school for 2-5 year olds in the lovely village of Frieth, next to Frieth CEC School!

Opening times

Mon – Wed
8:40am to 3:30pm

Thurs and Fri
8:40am to 12:30pm

Lunch Club each day
11:40 to 12:30

Received 'GOOD' from Ofsted! (January 2015)

We are open for mornings, afternoons and all-day sessions. To book a visit or register please contact

Donna or Kirstin:
Tel: 07928 186738
frieth-preschool@outlook.com
www.friethpreschool.co.uk

Schools



What a hectic and enjoyable end to the school year!

Ali Baba and the Bongo Bandits

Our end of year events included a fabulous performance by Key Stage 2 children of Ali Baba and the Bongo Bandits. We were all blown away by the confidence of the actors. We were very grateful to Gary Sims of Lane End Players who ensured the lighting was perfect for a professional performance.

Extravaganza!

In the last week of term, we opened our school for guests to enjoy an arts extravaganza: the children of Diamond Class sang, Opal drummed; Sapphire class performed country dancing; Emerald played ukuleles and Amethyst played guitars. The afternoon ended with our cheerleading club, Unity, performing a fantastic routine.

Garsington Opera

The arts extravaganza also included a short film made by the children of Emerald class during their recent

project with Garsington Opera. Together with a class from Stokenchurch School, the children produced a delightful short film of their response to the opera *Così fan Tutte*. The final piece was shown as a trailer at the opera. If you would like to see the video it is available on the Garsington website: www.garsingtonopera.org

PGL Osmington Bay

Our Year 6 trip to PGL Osmington Bay was a fantastic week filled with a huge range of activities. The children demonstrated true teamwork skills, great support for each other and exemplary behaviour.

Caldecotte in yurts!

For the first time our Year 5s had the opportunity to go on a residential trip. The children went to Caldecotte to take part in canoeing and sailing activities.

Volunteers

Finally I would like to thank our amazing volunteers who run our breakfast club. They offer incredible support and along with our fantastic team of teachers, teaching assistants and supporting staff make Lane End Primary School a great place to be.

email: marklockwood@fsmail.net

Very soon we hope to set up jogging and running tracks.

LEAG now have a quote to clear the site of the MUGA and get it up to Health and Safety Standards. Proposals are being put forward to the Parish Council.

LEAG are now working more closely with LEPC. Three members from each Group will meet on a regular basis and feedback will be discussed at general LEAG meetings.

A risk assessment has been carried out on the rather ugly green shed at the entrance to the playing fields. Demolition should be starting soon.

LEAG have a pitch, so why not come along and support our fund raising.

Lane End Players

Report by Georgina Brooks

Our autumn production, 'Daisy Pulls it Off' by Denise Deegan was a huge West End hit. The 'jolly hockeysticks' romp, set in 1927, is about a scholarship girl's adventures in a posh public school, and is great fun. Our production will be performed on Fridays and Saturdays 9/10 Oct and 16/17 Oct at 8pm.

Ticket prices are £8 Adults and £6 Concessions for the first night only,

the other performances being £10 Adults and £8 Concessions.

The Box Office is already open and you can now book your tickets online direct from the website www.laneendplayers.com.

Book in person at the Village Hall (Sycamore Room) on Saturdays from 9.30-12. You can also book seats by telephone: 880662, or email boxoffice@laneendplayers.com.

Lane End Conservation Group

Report by Jane Osborn

Lane End Conservation Group's dwindling band of volunteers continue to help keep the many miles of public footpaths within the Parish open, besides undertaking regular litter-picks (sadly necessary throughout the Parish), and maintaining the Harris Garden.

Unfortunately, our volunteer numbers are declining and in the foreseeable future there may be no-one to undertake these tasks. Now is the time to get involved before it is too late - contact either

Margaret Adnitt 882609 / margaret.adnitt@gmail.com

or Jane Osborn (881641 / janemosborn3@gmail.com)



The Twinning Association continues to run its hugely successful cafe at the village hall on the first Saturday morning of the month; and the committee and others interested congregate at the Grouse and Ale at 8pm on the evening of the first Thursday in the month.

This is not to say that huge and momentous debates take place, but it is a convivial time. The very successful VE70 Lunch in the Village Hall when we combined our efforts with those of the Royal British Legion is covered under their entry in this journal and we let them speak for us. It went so splendidly that we may well unite our efforts on other occasions.

Our tent on Village Day did a roaring trade in oysters. We do it as a reminder to all that our twin, Oleron, is a major centre of the French oyster and mussel farms. With its splendid beaches and wonderful seafood, we are very lucky to have the link. We are already turning our minds to Christmas: who wants to go to their Christmas market, and which of them is coming to our events. Last time the French were puzzled to understand exactly what the Lane End Mummers' play was about, but as the rest of Lane End are puzzled

(and this includes the Mummers themselves), we just tell them it's a mad English tradition!

Letter from Oleron

Report by Tim Cherry

As I write it is yet late July, and summer is in full swing. Enormous numbers of camper vans and visiting cars are trying to get to Ile d'Oleron. The weather recently has been unbroken blue and gold, and although just now there are some low pressure systems which are bringing rain the weather should soon return to its usual hot and dry August.

Unfortunately, the French *Agri-culteurs* are protesting against receiving low prices for their milk and grain, and a group of local farmers blocked access to the Viaduct for 36 hours, and dumped huge piles of manure in the car parks of the local supermarkets. They allowed ambulances to pass, and a limited number of cars, but in this 35 degree plus heat what it was like for a family who had just driven 6-7 hours from a Channel port, I shudder to think.

Ask the interior designer

with Samantha Johnson

With breezes cooling and leaves colouring, it's time to put away the citrus scented candles. Autumn has arrived.

To give your home the scent of autumn, try a simmering pot.



I use what I have to hand - orange peels, an apple, cloves, cinnamon sticks, cardamom pods, fresh ginger and star anise. Just put

in a pot with water and simmer over a low heat - wonderful!

Start looking out for different shaped pumpkins and keep them in top form by leaving them uncarved for most of October outside your front door. A pleasing display of pumpkins, gourds, and potted chrysanthemum will greet visitors until Hallowe'en rolls around.

Create a stand-out centrepiece on your dining table by using an out-of-the-ordinary pumpkin as your focal point. Use a greenish grey squash on a cake plate accented with two smaller pumpkins. Take a branch of bittersweet, twist it around the pump-

kins and leave to cascade across the table.

Arrange flowers in pretty autumn hues in a vase and tuck in a few autumn leaves. Group several small pumpkins around the vase for a picturesque autumnal arrangement.

If you know someone with a fireplace they will love these spice and herb fire starter packages. They take five minutes to make and smell amazing. A perfect autumn dinner hostess gift!

You will need a bag of coffee filters, embroidery thread and needle, dried orange and apple peels, cloves, cinnamon sticks, sprigs of fresh rosemary and lavender. Stuff the coffee filters with a handful of the spice mixture.

Thread the needle and sew the top opening closed. It's that simple. Pop several in a terracotta pot with some autumn leaves and tie it with raffia.

The smell will definitely get you in the autumn spirit. It's the perfect excuse to make a fire and roast marshmallows!



FRESH
GUERNSEY MILK & CREAM
 FROM YOUR **LOCAL DAIRY**

LACEYS
 FAMILY FARM



AVAILABLE FROM SELECTED LOCAL STORES,
 OUR FARM SHOP OR HOME DELIVERY

CONTACT US FOR MORE INFORMATION:
 LACEYS FAMILY FARM, BOLTER END FARM, LANE END, BUCKS. HP14 3LP
 TEL/FAX: 01494 881 879 WWW.LACEYSFAMILYFARM.CO.UK

great taste
 GOLD MEDAL WINNERS FOR WHOLE MILK AND DOUBLE CREAM

The new *Eolien en Mer*, a wind farm off the south coast of Oleron is proceeding. Recently a deputation from the Isle visited the London Array, a 176-unit wind farm off Ramsgate. The new farm is to be about half the size of the London Array and will generate quite a bit of revenue. The *pecheurs* and oystermen are of course concerned, but the project proceeds. No towers built yet.

The proposed tax on access to Oleron continues to be debated. Some feel that its impact on local industry (all material must pass over the Viaduct) and tourism will be too much; others feel that it is reasonable to charge for entry to the 'sceptered isle'. We shall see. The

Ile de Rey up near La Rochelle already charges six euros to cross.

Meantime, the big local news has been about 'L'Hermione', the 18th century replica frigate which took over 10 years to build at Rochefort, and was sailed across the Atlantic in May and June.

She is now returning to Rochefort, having had an enthusiastic reception in New York and other US eastern seaboard ports.

But despite the protests and delays, we hope you will continue to come to Oleron, and enjoy this lovely area. Perhaps we will see some of you at Christmas. Bring some mince pies!



INTERIORS for EVERYDAY LIVING

Samantha creates unique interiors with a real sense of identity and individuality. Her flexible style and close attention to detail allows her to take on diverse projects of different sizes, with a portfolio that includes complete redesigns and interior refreshes for family homes, workplaces, hotels and spas.

SAMANTHA JOHNSON
 INTERIOR DESIGN

TELEPHONE: 01494 882219
 samanthajohnsondesign.com



Great autumn evenings at

The Prince Albert

'A little old fashioned pub with a big heart'



Fortnightly pub quiz • Occasional folk nights

Open all day!

Food served weekdays 12.15-14.30 and Sunday 12.30—15.00

Evening meals Friday and Saturday 19.00-21.30

Please book for Saturday evenings

The Prince Albert, Moors End, Frieth, Oxon, RG9 6PX. Tel 881683

Lane End Youth and Community Centre

Report by Emma Savory



Macmillan Coffee Morning Fri 25 September

Come and join us from 9am for coffee and cake and support the world's

biggest coffee morning in aid of Macmillan Nurses. The Childrens Centre will be providing some activities for pre-school children. Any cake donations will be greatly received!

Quiz/Bingo Night Sat 12 September

Teams of max 8 people
£10 pp inc a fish supper
Bingo @ £1 a game
Bring your own drink
Book your team a place now.



70/80's themed disco night Sat 19 September

Join us for a night filled with all those dancefloor classics, fancy dress

optional, prize raffle, please bring your drinks and nibbles. Tickets £7.

Please email leycc@hotmail.co.uk regarding any of these events.

Thursday Lunch Club

Can you help for 2/3 hours per month? Would you be able to cook and/or serve a two course lunch for 20 people? We really need new volunteers, if you think you may be able to join our wonderful team please contact the Centre.

Computer Club

Did you know there is a FREE computer club in the village? It runs every Thursday 11.30am-1pm, you can bring your own device or use



one of our laptops – the choice is yours. No need to book a place just turn up on the day!

Add 'Lane End Youth & Community Centre' on Facebook, and you will find out first about all our latest events.

Book the Centre for events and celebrations. We are very competitively priced, offering discounts to Lane End residents.

Can you help organise a fundraising event? If so, please let me know, we would love to hear from you!

Lane End Youth & Community Centre,
Edmonds Road, Lane End, HP14 3EJ
Tel: 01494 883878 / 07932 326046
Email: leycc@hotmail.co.uk
Charity Number: 1101360

doing an apprenticeship on the farm when she finished. Her work ethic and eagerness to learn had impressed us and in June she started her apprenticeship full time.

It's a two-year course of learning whilst you're earning. Sam will learn the day to day workings of a farm with us and then go to college once a month to look at other farming businesses and learn the theory side of things. Her main jobs are to help with the calf rearing and assist Gideon with the milking herd but she's keen to have a go with everything, whether it's driving tractors or repairing machinery.

Breaking news – new shop

We have been gradually building up our shop over the last couple of years. Last Christmas was a big step forward when we opened for the whole of December. This year we are going one step further. The Shop will be opening full time on 1 December and then staying open for good! Not only that, but from January 2016 we will be opening Laceys Farm Butchers! The butcher and farm shop will be in the little yard where the shop is currently, and so we now have much work to do to be ready for our opening.

Meat is something that we have been looking to sell for a while now. We reared our own Rose Veal this summer and sold it through our shop and local butchers. The interest and

demand was amazing. We sold out of stock and had a list of requests for our next batch. The next step is to look to sell more meat reared on our farm and locally, and the opportunity has arisen to take on Johnstons butchers from the high street. We will be moving the butchers shop to our farm and calling it Laceys Farm Shop and Butchers. Lynda will be open until the New Year and then from January 2016 our shop will be open.

Ed and I are really excited about this opportunity. We're grateful to Lynda for helping us to set up our shop, and also all our loyal customers who have given us the support and encouragement to make this dream possible. I look forward to welcoming you to our new shop!



Milk Men

with Will Lacey 



breaking news—new shop!

Open Farm Sunday

In June we hosted Open Farm Sunday and I was really pleased to see so many of you come down to see what goes on. I must give the credit to all the people who helped to put the event together, specially Cadmore End school for helping with car parking. We had nearly 2000 people come through the gates to see the cows and calves, milking demonstrations and go for a tractor trailer ride. There was also plenty to see and do in the barn and the positive comments and feedback we've had gave me a great sense of pride.

The money raised was split between Cadmore End School, LEAF, the charity who organise the Open Farm Programme and Chiltern Air Ambulance. More than £1500 was raised and I know Cadmore End School in

particular were delighted with the contribution towards a new interactive white board for the school hall.

New apprentice



In June we took a new employee on at the farm. Sam Woodward started helping in our shop on a Saturday morning two years ago and showed an interest in the farm whilst dealing with customers. She had a go at milking the cows and really enjoyed it, and when she started her last year of A levels she asked us about

Frieth Cricket Club

Report by Ben Smiley

We have had a wonderful season of cricket with many new players. Junior training has taken off with more than 15 young players joining our coach on a Sunday morning to develop their cricket understanding and skills.

We recently enjoyed one of the most important events in our calendar—the President's Game against Incogniti CC, one of the oldest wandering sides in the world. The winners receive the 'Pocock Cup' which was founded in memory of Cliff Pocock,

a long-standing servant of Frieth Cricket Club. Cliff passed away at Christmas in 2014, and he is sorely missed.

There are lots more fun and friendly events coming up soon, all to raise money for the New Pavilion Fund. You can email us for more information about the Race Night on 10 October and our End of Season Dinner on 27 November.

Alternatively you can find out how to get involved with Frieth Cricket Club, as a player, volunteer or spectator, via email, or by ringing Ben Smiley on 07879 855353.

We hope to see you at the club soon.

YELLOW CARS

established 1976

SERVICES

- Airport & Seaport transfers
- Local & National Travel
- Executive Travel
- Minibus for large groups
- Document Delivery Service



BOOK ONLINE:
www.yellowcarshw.co.uk

 **01494 44 44 02**

Lane End Scouts

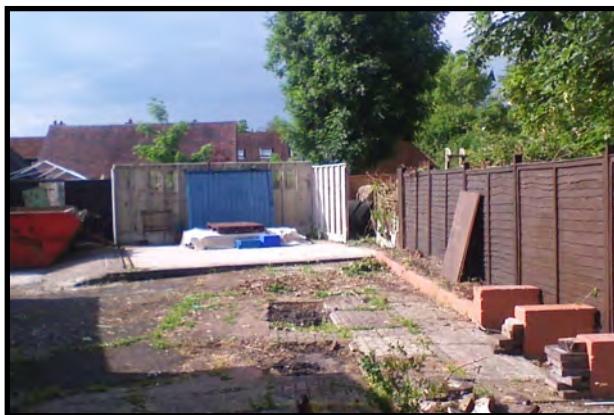
Report by Ian Harris



How to make a silk purse out of a sow's ear

First you need the vision, then the resolve to see it through. You need a bit of cheek, the strength to not fall out with your builder and, of course, the money.

We always knew here at Lane End Scouts that we wanted to make the concrete wasteland at the rear of our building something more than just an area where we had fires. We wanted somewhere safe and secure, so that our young people could experience the magic of camping in a familiar area, somewhere that we could carry out activities in poor weather, in the dark, without relying on gas lamps and strung up canvas to protect us from the elements.



I knew as a group that we had the vision, but not being a builder or an architect I struggled to portray what I wanted onto paper. My only option was to find a builder who could see what I wanted just from my words alone, not an easy task. However, as luck would have it, sat in a field with my dogs one day I was discussing with an acquaintance what I did in my spare time and what I wanted to build and he said, 'I'll do it'. We had some site meetings and after seeing his interpretation it was apparent to me that he 'got it'. Next was to secure the funds to do it.

Two weeks before Christmas 2013, I found myself in the offices of Red Kite Community Housing, pitching alongside many other well deserving projects. It felt like being on Dragons Den. Presentation done, we were told it would be some weeks before the decision was announced.

Less than a week later I was delighted to be told we had been successful. When Bucks Community Foundation also told me we had been successful with our request to them for support, we were ready to go.

It was difficult to see my dream in the mountain of diggers, skips and what seemed to be total chaos. I had promised to take pictures every day

Acaholics—still addicted!

Report by Katy Donoghue

Aca-Holics, our award winning local ladies barbershop quartet, have done it again!

Consisting of three ladies from Lane End village; Czarmé Pooley (baritone), Katy Donoghue (bass) and Laura Ogle (who sings lead and is also owner of Gateway Barbers) and Sue Hunt (tenor), who travels up from Surrey every week to rehearsals.

Having been together less than two years, Aca-Holics recently took the plunge and entered their first ever national quartet competition; the preliminary stage of which took place in mid-June in Walsall.

The competition organised by The Ladies Association of British Barbershop Singers (LABBS) saw 31 ladies barbershop quartets from all over the UK competing against each other, with only the top 16 getting through. Aca-Holics were thrilled to find that they had qualified.

Katy said: 'We thoroughly enjoyed the competition as it was a great opportunity for us to see if we've got

what it takes to compete at a National level. To find out that we are now classed as one of the top 16 quartets in the country is phenomenal and has given us a real confidence boost.'

The quartet is now looking forward to competing at the semi-finals in Bournemouth at the end of October.



For more details, or to book the Aca-Holics for your event, e-mail acaholics@hotmail.co.uk or look on the group's Facebook page.

Speed awareness

Report by Allen Lewis

Various speeding campaigns have been used in our villages, and offenders given tickets or warnings. However, the fight should go on.

I have heard and seen numerous vehicles entering or leaving Lane End at speeds far in excess the speed limit. However there are steps that can be taken and I wish to share with you a positive experience from the Community Police.

You can dial 101 and report speeding. Option 2 takes you to Thames Valley Police, Option 2 again for the

Police Enquiry Centre (PEC). When I called, a friendly operator took down the vehicle details (checking the reg and make), venue and timings, and areport of what I saw.

Refreshingly, my report was added to that vehicle's notes. So if there was another report against that vehicle, the Police would take follow up action against that owner, which may be a house visit or issue of warning note. Equally, should the Police stop this vehicle, the original note will be highlighted, and therefore their line of questioning or subsequent decision on warning versus ticket may be swayed.

A reassuring response that shows we can all still make a difference.

Joe Griffin TV AERIAL SERVICES

- **Poor Reception Solved** - Aerials repaired & supplied
- **TVs** - Hung on your wall for you. Also supplied & tuned
- **Extra TV Points** - For aerial and Sky (In HD!)
- **Sky TV** - Also Foreign Language TV

Call Marlow 01628 439115



of the build process so I could maintain a diary of its progress and little by little, week by week, the thing I had in my head began to emerge from random piles of sand, paving stones and wood. It wasn't all plain sailing of course, and we had some soul-searching discussions as the builder explained why some things could just not happen how I thought they could. In the end I'm glad he had the gump-tion to argue the point with me, as between us we have created a thing of great practicality and beauty.

We officially opened the area at our Group AGM in September

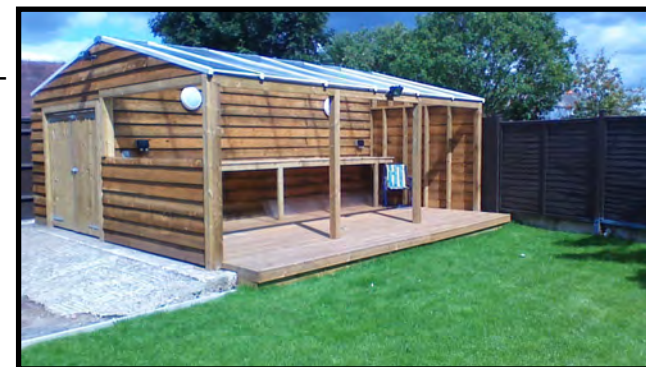
2014 with approximately 60 people receiving first view of the finished project.

Many could hardly believe the transformation, and it is great to see it being so well used for the many activities throughout the past

Scouting year. If I am honest, on quiet occasions when I visit to cut the grass, I have to pinch myself to ensure it is real and not the dream it once was!

Many thanks go to the support of Red Kite Community Housing, the Bucks Community Foundation and anyone who had to spend time with me during the development of the project and last but by no means least, the builder!

You know you can make a difference too? If you have a skill, if you could offer a service or even give a little spare time to the most dynamic youth organisation in the world, then please drop me a line or give me a call (details below).



Lane End Scouts and Guides
Registered Charity 308008

Contact Ian Harris
Group Scout Leader
1st Lane End Scouts

laneend@chilternvalescouts.org.uk

Tel 880617

Lane End Village Hall

Report by Andrew Mactavish

The Village Hall is our Hall - yours and mine (assuming you live in Lane End). It is nothing to do with the Government, or the County Council, or the District Council. It doesn't even belong to the Parish Council. It belongs to the villagers, to us.

It is run by the Village Hall Committee. This consists of a representative of every Lane End club and society that use the Hall. The committee meets at 8pm on the second Monday of every month at the Hall's Sycamore Room, and anyone is welcome to attend.

Meetings usually last about an hour. They deal with the overall running of the place: the dishwasher and the contract cleaning; replacement dustpans and replacement windowsills. Then there is the grass cutting and the management of the trees on the Hall site; and the income and expenditure, because the Hall is self-financing.

Of the financial contributors, the Lane End Players are the biggest donors. We are lucky to have one of the best drama groups around based here, a group who have sell-out productions and who bring in money from audiences drawn from miles around. Then there is the

Village Fete, a Herculean effort organised by Bob Nix, which is another major source of income. Sadly last year and further to a change in Government policy, we lost the long-established morning pre-school, which has caused some belt tightening.

The daily hire rates are very reasonable, but we now have rather more empty daytime hours than we would like. After all, we have a superb kitchen and facilities, and we want to be able to keep them that way, particularly for the benefit of individual villager, private and club hirers.

We are lucky too that we have a number on our Committee with the enthusiasm and the skills to sort out many of the day-to-day matters. Some are professionally qualified to tackle minor electrical or plumbing problems, but most of us just lend a hand with the odd job, like the removal of the ivy earlier this year.

So if you are interested in hiring or helping or just wanting to know more, ring Eve Berry, the Booking Secretary, on 07470 303163.

Book Lane End Village Hall for children's parties, evening dinners and dances, or regular classes.

Facilities include kitchen, large hall and two meeting rooms

Call 07470 303163



Where your little ones will blossom into independent confident learners in a wonderful environment, cared for by dedicated and qualified practitioners.

 Come and meet our team and see what makes Poppies Day Nurseries different.

Bourne End	Marlow	Beeconsfield	Old Windsor
01628 521522	01628 487772	01494 677116	01753 313030

www.poppiesdaynursery.com



WHITLER CONSTRUCTION LTD

ESTABLISHED FOR OVER 35 YEARS, WE PRIDE OURSELVES
ON HIGH QUALITY WORK AND A RELIABLE SERVICE

- EXTENSIONS
- NEW KITCHENS
- BATHROOMS
- HOUSE ALTERATIONS
- GENERAL MAINTENANCE OR REPAIRS

**FROM YOUR INITIAL IDEA WE CAN
GIVE YOU YOUR COMPLETE DREAM**

FOR MORE INFORMATION AND ADVICE CONTACT

CHRIS BUTLER ON 07971 487 324

7 ORCHARD ROW, BOLTER END LANE, WHEELER END, BUCKS HP14 3ND
TEL 01494 882852 Email wconstruct@hotmail.com



Each picture takes around eight hours but Jan says it seems like no time at all. He's excited rather than nervous when he sets up in a field first thing in the morning and is faced with the blank canvas. 'I plan ahead. Once I've found somewhere interesting and know which canvas I'm going to use, I'm ready. The wrong size and shape puts me right off! Then I sit down and my imagination starts running away.'

The hardest part is avoiding live-stock—he's been surrounded by a herd of cows and a horse once tried to eat his canvas. People are different, though: 'I like talking to people, when I'm painting, you never get to

do that in the studio.'

Jan has painted 20 pictures in and around Lane End so far in the 'en plein air' series. A small selection is pictured, do you recognise where they are?

To find out, or for more information, contact Jan on:

nestorgaska@hotmail.com

07952 517305

www.jangaska.co.uk

or just look for Jan Gaska - artist on Facebook



B&T Supermarket

Your friendly local store



- Visit our new Post Office now with extended opening hours, offering a wide range of Products and Services.
- Wide variety of Groceries, Fresh Fruit and Vegetables, Fresh Sandwiches, Dairy Produce and a extensive Frozen selection.
- Fresh Crusty Bread and Pastries, baked fresh daily.
- Wines, Spirits, Lagers and Beers.
- Dry Cleaning and Carpet Cleaner for hire.
- In-store Cash Machine.
- Pay Point Terminal: Re-charge Electric and Gas, TV Licence, Rent and Council Tax, Mobile Phone Top-ups, Photocopying.



Opening Hours: Monday – Saturday 8am – 8pm and Sunday 9.30am – 2.30pm

Edmonds Shopping Centre
5-7 Edmonds Road, off Archers Way (Next to Elim Centre)
Lane End, High Wycombe, Bucks, HP143EJ
Londis: 01494 882346 Post Office: 01494 883556



Nature notes

Hedgehogs are declining at the same rate as tigers. What can we do to help? Local hedgehog champion, Katy Donaghue, gives us a few tips

The once common sight of hedgehogs in gardens could become a thing of the past, as they have suffered a dramatic decline in recent years.

There are now fewer than a million hedgehogs left in the UK, down from an estimated two million in the mid 90s and 36 million in the 50s – a decline of 97% according to The People's Trust for Endangered Species (PTES), a charity which has been running counts of hedgehogs for over a decade.

Hedgehogs now appear to be declining in the UK at the same rate as tigers globally – at around 5% a year, both in rural and urban habitats.

Such a severe decline means the hedgehog is becoming an increasingly rare sight in our gardens, parks and hedgerows. Hedgehogs could be extinct in the UK by 2025 if no action is taken (BBC Springwatch 2015).

Why is it important to save them?

The ancestors of the modern hedgehog evolved around 20 million



expensive printmaking equipment with which he produced his dark figurative works of people in the urban landscape. He turned instead to painting to fit around his day job, producing large-scale works from photographs.

After the fire and loss of his studio, Jan couldn't work on paintings as he didn't have the space. Losing his previous work made him feel as if he was in a 'cul-de-sac'.

Two things conspired to make him re-evaluate. One was the inspiration of another artist, Michael Johnson, who used to spend up to a year working on a picture. 'Then he started knocking things out off the cuff. It was really direct painting,' explains Jan, 'and it inspired me. I felt I'd been holding myself back.'

The other impetus for painting again was getting a dog. 'It wasn't a conscious thing, it was practical,' says Jan. 'I set off with the dog and an Ordnance Survey map and found myself exploring the landscape and looking for opportunities—interesting angles, architectural trees, wavy lines. I knew straight away when I saw something compositionally striking.'

It was exploring the countryside around Lane End that inspired Jan's new series of paintings: 'en plein air' - a French expression which describes the act of painting outdoors. And he really does. Jan began the series in February and shivered all day in a field to produce the picture opposite, of Little Frieth with a gate and water trough in the foreground.

Lane End 'en plein air'

Report by Katy Dunn

A fire at your property is always shocking and devastating, but imagine if you were an artist and the fire was in your studio containing many years' work. Imagine if you were also a father of three and among the works of art lost were paintings of your children. All those memories lovingly captured on canvas from when they were fluff-haired babies to long-haired children; gone.

Lane End artist Jan Gaska didn't paint for two years after this hap-

pened to him. 'The fire changed everything,' he said. 'Until then I had a plan. I was building up work and had a certain way of doing things.'

Jan had always wanted to be an artist. After a fine art degree he did a Masters in illustration printmaking. This led to a two-year residency at Southall Park. When the children came along, printmaking 'went on the backburner' and he began working in the library at Bucks New University. He didn't have access to the



Email: katyjdunn@btinternet.com and **share** here any local photos, wildlife stories or interesting nature encounters...

years ago, when woolly mammoths and sabre-toothed tigers bounced around. They have changed little over the last 15 million years.

Hedgehogs have adapted to a largely nocturnal, insectivorous way of life. Ecologically, they play an important role in food chains, consuming a wide variety of invertebrates and small vertebrates as well as plant matter. This makes them invaluable to the gardener as they consume a range of unwanted garden pests, in particular slugs and snails.

Oh, and they're really cute!

Common myths explained:

Hedgehogs are nocturnal and only come out at night. If you see a hedgehog out during the day, it is probably in trouble and needs to be taken to a wildlife rescue centre eg Tiggywinkles Wildlife Hospital in Haddenham. Tel: 01844 292292.



Underweight hedgehogs will not survive hibernation, so need to be kept indoors until April time. A hedgehog has to weigh at least 600 grams by early December for their winter hibernation.

Hedgehog mums will feed their babies for up to eight weeks then leave them to fend for themselves. If the nest is disturbed during these first crucial weeks, the mum may abandon or even eat her babies, so leave them well alone.

Hedgehogs can wake from winter hibernation if disturbed or if the weather conditions change, so they may be out and about when the ground is frozen at night, looking for food.

Typically hedgehogs hibernate from late December – late March, although this is weather dependent.

A hedgehog doesn't need to hibernate, in fact some choose not to.

Hedgehogs swim very well but if they cannot escape from a garden pond or pool, they will become exhausted and drown.

Hedgehog fleas will not live on cats, dogs, humans or inside houses, so neither you nor your pets can catch fleas from hedgehogs.

What can you do to help?

DO:

Do look out for injured or underweight hedgehogs in autumn

Do put out clean water each night for drinking

Do put out a bowl of meaty dog/cat food (not fish flavoured) around dusk

Do provide a 'ramp' into your garden pond so that hedgehogs won't drown

Do create a 'hedgehog corridor' between your neighbour's garden and your own (a 10cm square hole in your fence at ground level). A hedgehog needs to roam between 5/6 gardens a night looking for food

Do check your compost heap before forking over, in case a hedgehog has taken up residence

Do leave areas of your garden 'untended' where the hedgehogs can search for food

Do install a hedgehog house in a quiet corner of your garden

DON'T:

Don't put out bread and milk (hedgehogs are lactose intolerant)

Don't pick up healthy hedgehogs

Don't leave black sacks lying around

(hedgehogs like to nest in them)

Don't use slug pellets or other chemicals as they may poison hedgehogs

Don't light a bonfire without checking for hedgehogs

Don't spray hedgehogs with dog/cat flea sprays, it will be detrimental to them

Don't leave barbed wire or green garden netting close to the ground. Even a football net can be disastrous to a hedgehog, acting as a snare. Instead lift it up at night to at least 30cm above the ground

So...be a good hedgehog 'neighbour' and help our spiny friends if you want your children and grandchildren to encounter this reclusive, loveable creature. It won't survive unless you do!

Tiggywinkles Wildlife Hospital in Haddenham. Tel: 01844 292292.



Saturdays

Regulars

Coffee Shop—Enjoy coffee and cake on the first and third Saturdays of the month, 10am-12noon, Lane End Village Hall.

The Twinning Association runs the first Saturday in the month, Holy Trinity the third.

Events

12 Sept—Quiz/bingo night inc fish supper. LEYCC 883878 leycc@hotmail.co.uk

19 Sept—70s/80s disco night. Tickets £7 LEYCC 883878 leycc@hotmail.co.uk

10 and 17 Oct—Lane End Players production, 'Daisy pulls it off', a jolly hockeysticks romp set in 1927. Starts 8pm, tickets £10 (£8 concessions) tel 880662 or email boxoffice@laneendplayers.com

10 Oct—Race Night, Frieth Cricket Club, tel Ben Smiley on 07879 855353

Sundays

Regulars

Parish Communion—9.30 Holy Trinity Church Lane End (crèche first Sunday of the month)

Elim service—10.30 am at Elim Christian Centre, Edmonds Road, Lane End

Sung Eucharist/Family Service—11am St Mary's Church Cadmore End

Morning Service (Methodist)—11.15am Holy Trinity Church Lane End

Whistles & Bells dog behaviour school—9-12noon LEYCC, Tel Jenny 07703 020344

Sunday lunch—Grand International Buffet and traditional carvery at The Tree, Cadmore End. £12.95 Book on 881183

Evensong—6pm at Holy Trinity Church Lane End

Lane End Players—7.30pm Village Hall Tel 483359

Events

4 Oct—Frieth Natural History Society Open Day. 11.30am-3.30pm. Call Alan Gudge on 881464

18 Oct—Frieth Hilly 10k and 5k running race. Book early to secure a place at the website friethhilly.co.uk.

8 Nov—Remembrance Sunday. Usual service outside Lane End Village Hall followed by Holy Trinity Church

Thursdays

Regulars

Simply Walk—10am Lane End Playing Field's car park. Walk and chat for 1-2 hours

Coffee Stop—Village Hall 10-12noon. Coffee and chat. All welcome, run by Methodist Church

Lane End Support Group—second Thursday of the month, 9.30-11.30am, Sure Start Children's Centre at Lane End Primary

Computers@The Centre—11.30-2pm LEYCC

The Drop-In (Social lunch) - 12-2pm LEYCC

Four Ends Flower Club—Fourth Thursday of the month 2pm in Lane End Village Hall. Visitors £5. Flower arranging demonstration, raffle, tea and cake. Contact 482724

LEOPAG—First Thursday of the month 2-4pm LEYCC

Line Dancing for Beginners. 7.30-9.30 Frieth Village Hall

Lane End Players—8pm Village Hall Tel 483359

West Wycombe Guides—7.15pm Piddington Village Hall

French Refresh and Extend—8-9.30pm, La Cabane@Samedi, Lane End. Tel 881919

The Tree, Cadmore End—lunch and soft drink offer £5.99. Indian buffet £8.99 per person, 6-9pm. 881183

Twinning Association—first Thursday of the month at the Grouse & Ale 8pm

Fridays

Regulars

Circuits—9.30-10.30am LEYCC

Craft group—first and third Friday of the month in Lane End Village Hall. Tel 01993 837078 for details

The Tree—lunch and soft drink offer £5.99 per person, 12-5pm

Events

25 September—Macmillan coffee morning, from 9am, LEYCC

9 and 16 Oct—Lane End Players production, 'Daisy pulls it off', a jolly hockeysticks romp set in 1927. Starts 8pm, tickets £10 (£8 concessions) tel 880662 or email boxoffice@laneendplayers.com

27 Nov—End of season dinner, Frieth Cricket Club, tel Ben Smiley on 07879 855353

11 Dec—British Legion Christmas dinner at St Katharine's Parmoor

← THURSDAY Events

10 Sept—visit to Crockmore House, Fawley. This garden was designed by Chelsea Flower Show winner, Christopher Bradley Hole. Guided tour by the owner followed by tea and cake. Hambleden Valley Garden Club tel. 01491 638690

1 Oct. Visit to Wittington Estate (SAS) Medmenham. These gardens were created in the late 1800's by Lord Davenport from barren fields. It went through a period of decline but has been renovated over the past two decades. Includes a guided tour from the Head Gardener. Hambleden Valley Garden Club tel. 01491 638690

Moorend Common

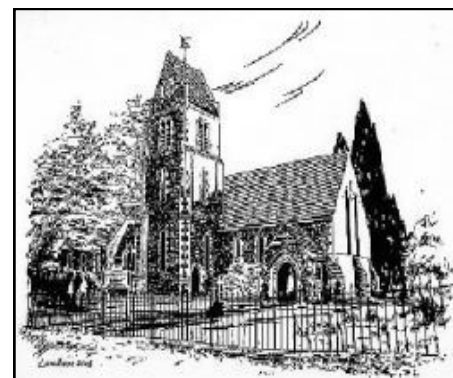
Report by Katy Dunn

We've had a lovely summer on Moorend Common, kicking off with the Big Father's Day Picnic and tug-of-war in June. Much fun was had by all and I am pleased and proud to day that LANE END won the tug-of-war. We're hoping to hold the picnic again next year to allow Frieth the opportunity to practise a little in order to mount a serious challenge.

An exciting new wildlife discovery on Moorend Common is the Marsh Frithillary. This is now a rare and nationally declining species of butterfly. It

has an intricate chequered pattern on its wings in bright orange colours. We hope that it finds Moorend Common to its liking and that there is enough Devil's-bit Scabious (the food plant of its caterpillars) to keep the colony going. We're going for a late grass cut this year (early-mid September) to try and ensure the scabious has seeded before cutting.

We've just put in a new grant application to support the grass cutting on Moorend, as it's an expensive business for the parish council. Without annual grass-cutting the wild flowers would die off and be overtaken by coarse grasses, so it's an essential outlay. Fingers crossed the Forestry Commission look kindly on us!



Holy Trinity Church Lane End

Your church is now open every day during daylight hours.

Why not take five minutes from your busy life to spend some time to pray, or just sit in the peace and serenity of this beautiful building.

Your day by day
guide to local
meetings, clubs
and events



What's On?

To include your event or group meeting (free) email: katjdunn@btinternet.com
Please also be sure to inform me of any changes

Mondays

Regulars

French Beginners classes—9.45-11.15 La Cabane at Samedi in Lane End. Tel Denise 881919

Simply Walk—10am Meet Lane End Playing Field's car park. Walk and chat for 1-2 hours

LEOPAG (50+)—10.30-12.30am coffee pop-in LEYCC, Edmonds Road, Lane End. Tel: 883878

Gentle Exercise for over 60s—2-3pm LEYCC

Baby Welfare Clinic—2-4pm, SureStart Centre, Lane End Primary School

French refresh and extend classes—12.30-2pm La Cabane at Samedi in Lane End. Tel Denise 881919

The Tree—lunch and soft drink offer all week £5.99 per person, 12-5pm

Lane End Parish Council Meeting—First Monday of the month, 7.30 in Lane End Village Hall, all welcome

Lane End Evening WI—Last Monday of the month at 8pm in Lane End Village Hall

Pilates with Lauren—5.50 and 7pm LEYCC £50 for 6 week course. Tel 07709 430634

Bridge Club—7.30pm Lane End Village Hall

Events

7 Sept, 5 Oct, 2 Nov, Lane End Parish Council meeting, Lane End village hall.

14 Sept—Patient group meeting at Marlow Doctors House, Marlow. Email helen.butterfield@nhs.net

Tuesdays

Regulars

Parent & Toddler Group—9.30-11 Lane End Primary School. Tel Sure Start 447110

The Tree—lunch and soft drink offer £5.99 per person, 12-5pm

West Wycombe WI—Third Tuesday in the month (except August) 2pm in West Wycombe Village Hall. New members and visitors welcome. Tel Janice 881049

Hambleden Valley Gardening Club—7.30pm, First Tuesday of the month, Skirmett Village Hall. Tel 01491 638690

Bingo — 7.30pm Sycamore Room Lane End Village Hall

Senior youth club— LEYCC, 6.30-8.30, call Emma for info on 883878

Circuits—Frieth village hall, 7pm

Events

6 Oct—7.30pm at Skirmett Village Hall. We start our new season's talks with a talk from Timothy Walker, botanist and former Director of Oxford Botanical Gardens. The title is "Plants, Borders and Gardens" which is his personal view of modern English gardens and gardening. Hambleden Valley Garden Club tel. 01491 638690

1 Dec—Laceys Family Farm shop and butchers opens!

Wednesdays

Regulars

Music & Rhymes—9.30-10.15 Lane End Primary School. Tel Sure Start 447110

The Tree—lunch and soft drink offer £5.99 per person, 12-5pm

Bridge Club—1.30pm Lane End Village Hall

School of Traditional Medieval Fencing—7.30pm Lane End Village Hall

Quiz Night—8.30-pm at The Tree in Cadmore End

Junior youth club—LEYCC, 6-8pm. call Emma for info on 883878

Pilates with Lauren—6.30 and 7.30pm Frieth village hall £50 for 6 week course. Tel 07709 430634

Beginners Jive classes, Frieth village hall, doors open 7.30pm. £5 per class. Tel 07947 106607

Events