

Summer 2022

1,750 copies distributed

free

the Clarion

Your parish magazine with news and views from Bolter End,
Cadmore End, Lane End, Moor End and Wheeler End

CELEBRATION & JUBILATION!



Apt Heating Services



Gas Safe Registered Engineers
Registered No. 209175

Local Services Offered

- General Plumbing • Installation Work
- Free Estimates • Full Gas Central Heating installations undertaken
- Boilers replaced and your options explained in laymans terms
 - Warm Air Units upgraded or removed
 - Radiators added and sytems updated or altered
- All domestic natural gas appliances installed and serviced including gas fire cookers and hobs
 - Breakdown repairs on all Natural Gas appliances
 - Fast, friendly service at a fair price
- Full references from satisfied local customers available on demand



Tel: 07941 286747

Apt Heating Services, Lane End
Best prices, Service and reliability from
a mature local tradesmen

Your Pubs, Your Community, Our Pleasure



Yew Tree

"Everything was perfect"

***"Fabulous Sunday Roast
Travelled 8 miles but worth
every mile - excellent!!!"***

***"it was so good! Super good
pricing and tasty food."***

"...little Buckinghamshire gem."

***"A lovely pub in beautiful
countryside."***

Grouse & Ale - Lane End

01494 88 22 99

grouseandale.com



Yew Tree - Frieth

01494 88 00 77

yewtreefrieth.com

GROUSE & ALE

***"delicious home cooked sunday
roast with generous portions and
tasty gravy!"***

"Already booked for next year."

***"Excellent food, quick and friendly
service and a great ambience."***

"Hospitality at its best!"

***"Fantastic service and
the food was brilliant!"***



NEW TERRACES, NEW MENU, SAME LOVE

All quotes: Trip Advisor 2019/20

Hey! Broadband

Call Free
0808 168 1616

Hey! Lane End

Fast, affordable & reliable full fibre
broadband for everyone!



✓ 4K Streaming



✓ Gaming



✓ Home Working



✓ VoIP

Rated 'Excellent' on ★ Trustpilot

Check availability
heybroadband.co.uk/lane-end/



From the Editor

Summer at last! We've an exciting Jubilee weekend coming up in Lane End with the music event at the Playing Fields on Friday 3 June and Lane End village fete on the 4th. I'm also really excited to see the exhibition in the church on 4 June, with paintings of local places and faces from our very own talented artists; Julie Wetenhall and Jan Gaska.

There's also an opportunity to go behind the gates at Lacey's Family Farm on Open Farm Sunday on 12 June. It's always a happy day filled with the joyous chaos of cows, kids and ice cream. It's also a great way to remind our children where their food comes from.

In this issue there's some useful news on developments in our area, including an update on the sale of Chalky Fields by Councillor Graeme Coulter (p8), what's happening about the proposed sale of Finings Wood (p35) and on the proposed film studios at Booker airfield (p50).

All of these are threats to our village or exciting opportunities, depending on your viewpoint. It's up to us to get involved to make sure we make the most of the latter and turn them into positive developments for our community.

From Katy Dunn, Editor

Advertise in the Clarion

Connect with your local community,
reach 1750 households in the area

£55 half page per issue / £90 full page per issue

Discounts for multiple issues

Contact Hayley Glasgow on clerk@laneendparishcouncil.org.uk



Servicing and MOTs at North's Garage

Our specialists carry out a huge range of work from a simple tyre change to a full engine rebuild. If you are unsure about what work your car requires, give us a call on **01494 881258** and we will be happy to take a look for you.



MOT (including diesel)



Servicing



Repairs



Electronic fault diagnostics



Cam Belts



Air Conditioning



Four wheel laser alignment



Tyres / Puncture repairs

ADDITIONAL SERVICES

Holiday and winter safety checks

Local breakdowns

Customer car collection / Local lifts
(by prior arrangement)

Arrangements can be made for accident repairs

Visit our website at **www.northsgarage.co.uk** and like us on Facebook for your chance to get involved in our competitions!

North's Garage,
High Street, Lane End, HP14 3JF
Tel: (01494) 881258
Email: service@northsgarage.co.uk sales@northsgarage.co.uk

established 1923
**NORTH'S
GARAGE**
www.northsgarage.co.uk

Your Parish Council



laneendparishcouncil.org.uk

Parish Clerk

Hayley Glasgow

Tel: 01494 437111

clerk@laneendparishcouncil.org.uk

PO Box 1616

High Wycombe

Bucks HP12 9FS

Councillors

Chairman: Cllr Michael Detsiny

Vice Chairman:

Cllr Graeme Coulter

Cllr Simeon Achurch

Cllr Mandy Dunning

Cllr Colin Harries

Cllr William Hunt

Cllr John Nicolson

Cllr Jane Osborn

Cllr Callum Stewart

Cllr Keith Wright

Cllr Donna Graham

Up-coming Meetings for 2022

Parish council meetings take place on the first Monday of the month at 7.30pm.

6 June—Lane End Sports Pavilion

4 July Rackley's Farm, Cadmore End

No meeting in August

Facebook

Follow us on Facebook to keep up to date with relevant information about what's going on in the Parish.

<https://www.facebook.com/LaneEndParishCouncil/>

Website

www.laneendparishcouncil.org.uk

You can read parish council minutes, find archive copies of The Clarion, check on local planning applications and there's even a footpaths map.

Allotments

We have three allotment sites: Chalky Field, Marlow Road. Bunkers, Church Road. Sandyfield, Marlow Road. Prices range from £21-40 per year, depending on size.

We currently have vacant plots at Sandyfields in Cadmore End. If you would like an allotment plot please contact the Parish Clerk.

Planning Applications

The Planning Applications relevant to the Lane End Parish Council are updated on the Parish Council's website

www.laneendparishcouncil.org.uk

Whilst the Parish Council does not have the power to determine applications its local knowledge is sought on each and every application.

Street lights

To report a faulty street light please note the column number, the road where the street light is situated and the nearest property and report to the Clerk - Hayley Glasgow 01494 437111 /

clerk@laneendparishcouncil.org.uk

FixMyStreet.com

If you want to report anything to the council such as things which are broken, dirty, damaged or dumped, go to FixMyStreet.com. You can also report things that need fixing, cleaning or clearing, like graffiti, dog fouling, potholes or street lights that don't work.

All you have to do is type in a post-code and describe your problem.

Please get in touch with the parish clerk on 01494 437111 or email clerk@laneendparishcouncil.org.uk

Shaun Guard TV & WIFI SERVICES

- **Aerials** - supplied, repaired & poor reception solved
- **Satellite** - Sky Q dish upgrades, discreet dish installation
- **Internet / WiFi** - blackspots cured, internal & external data cabling
- **TVs** - hung on your wall or set up and tuned



OXFORD AERIALS

www.oxfordaerials.co.uk

shaun@oxfordaerials.co.uk

Call Marlow 01628 439115

Various works carried out by the parish council in the last three months

Arranged for repair of railings around the duck pond.

Arranged for the replacement of street light lanterns

Repair of dog waste bin at the Playing Fields

Arranged repainting of the milestone outside the village hall

Arranged repair of Church Path prior to the Jubilee weekend



JHC ELECTRICAL SERVICES Ltd

James Clark

All types of electrical works undertaken. Rewires, in/outside lights, down lighters, new fuse boards, additional sockets, security lighting, fault-finding and CCTV systems. Electric underfloor heating, storage heater repairs. Experts in all aspects of **LED** lighting.

No job is too small, we can do it all. Just ask!!

07720 598860 01494 881766

jhcelectrical25@aol.com jhcelectrical.co.uk

Fully Insured and all work Guaranteed.

Honest, Local, Reliable Tradesman.

Established 17 years.

The Dog House, 10 Elwes Road, Lane End, HP14 3DR



Chalky Fields sale update

By Cllr Graeme Coulter

As many parishioners know, Lane End Parish Council anticipates receiving a significant level of funding from the sale of its land at Chalky Fields. The exact size of these capital receipts are not yet known as they will be determined by the planning consent. If the developer is unable to gain a satisfactory planning consent then the sale will simply not proceed.

Although an initial planning application was submitted, it became clear that this was not acceptable to the planning authority as it stood. As such, the developer is undertaking significant revisions to this application which are only now being submitted.

Given the typical timescales for determination of applications of this size, we have been advised that it is unlikely that any planning consent would be achieved this year. On that basis, it is highly improbable that the Council would be in receipt of any funds arising from the sale until spring 2023 at the earliest.

Even then it must be noted that this timescale is far from certain. There are a number of factors which could potentially extend or even de-rail the process.

There are a number of different very worthy community projects that wish to benefit from the parish council's anticipated windfall, which include helping to purchase Finings Wood (see p37), creating an open air theatre and a children's play area at the Playing Fields. The parish council will be pleased to give its due consideration to all of these projects and offer support where it feels it can. However, as there is not only uncertainty about the level of funds the parish council will eventually receive, but also considerable uncertainty as to when they will become available, it cannot yet guarantee any offers to any particular projects.

In the meantime, the parish council has set up an independent Spending Priorities Group to undertake a more detailed examination of the different projects. As yet, no priorities have been determined and the council will, of course, seek the views of residents before any final decisions are made. However, until the parish council is physically in receipt of the funds from the anticipated sale of Chalky Fields it is regrettably not actually in a position to be able to progress or undertake any of these projects at the moment.

GATEWAY BARBERS



ABOUT US

We are an independent, multi-award winning barber shop in Lane End providing the ultimate in gentlemen's grooming services.

Our barbers are professionally trained experts that are state registered and proud members of the British Master Barber Alliance.

We combine traditional barbering techniques with the latest trends in male hairdressing to bring you a truly bespoke experience.

OPENING TIMES

Monday - Friday

10:00 - 17:30

Saturday

08:00 - 15:00

WWW.GATEWAYBOOKINGS.CO.UK

21 HIGH STREET, LANE END, BUCKINGHAMSHIRE, HP14 3JF

TELEPHONE: 01494 883 886



@GatewayBarbersLaneEnd



@Gateway_Barbers

The lowdown



 Lane End

Conservation Group

Report by Pauline Cavell-Northam

As I write, the bluebells are now in full bloom and how very beautiful they look in the woods and bordering the fields - long may they last. With so little rain recently the footpaths are now firm and dry but weeds are beginning to be a menace.

Brambles are the worst offenders because they grow so fast and are very 'prickly', but stinging nettles and bracken will also soon become very evident. Do, please, take secateurs on your walks and trim back where necessary. The Action Day group works very hard to keep the paths clear but any additional help is always welcome.

I have noticed far more people walking around the village recently, no doubt due to the pandemic, and this is surely to be a very good thing. However the majority of these walkers have been mainly walking on the tarmac footpaths or on the Commons.

There are so many more paths within the Parish of Lane End - over 20 miles of them! So do get a map and explore them further: you will not be disappointed.

Why not make a start by walking through Finings Wood and over the fields. Enjoy your walks.

Footpath report

Report by Nigel & Anna Bacon

Summer is nearly here and the footpaths are beginning to dry out and show the wonderful wildflowers: carpets of celandine, primroses, wood anemones, dog violets, stitchwort and the bluebells are just beginning to poke their heads up.

We have taken over the role of footpath monitoring for the Lane End area. If you come across any problems on the paths, please let us

know on:

nbacon@doctors.org or

annabacon@thamesinternet.com

We are unable to clear big obstructions, such as fallen trees but we can report such to either the landowners or the Chiltern Society who will endeavour to clear the paths.

Our monitoring role requires us to walk all the Lane End footpaths twice a year. Some people have already adopted a footpath and inform us of any problems. If anyone else would like to do the same for one of their favourite paths, please let us know.

A footpath map is available on the Lane End Parish Council website:

laneendparishcouncil.org.uk/footpaths Happy walking!



Proud of Bucks Awards

Report by Ceri Nicolson

On Saturday 2 April the South West Chilterns Community Board organised a wonderful Community Engagement Day in Higginson Park, Marlow. The sun shone and Marlow FM played while groups from all over Bucks gathered together to set up stalls and displays, including emergency services, such as the police and fire brigade, charitable organisations, community groups, and parish councils.

Lane End was well-represented by the Lane End Players, featuring a stage make-up demonstration by Pip Dadd, who did a 'Mrs Doubtfire' transformation on willing victim, John Nicolson! This was followed by a costume parade of Fashion through the Ages, modelled by Lane End Players and masterminded by Tish Marshall.

Last but certainly not least, Alison Hartnett showcased her extensive acting skills by performing monologues from LEP's recent production of 'Two' by Jim Cartwright. The Players are grateful to all who participated or simply came to watch.



The Community Engagement Day, organised by Makyla Devlin, also featured the presentation of the 'Proud of Bucks' Awards, to recognise the contribution that many groups and individuals make to our communities here in Buckinghamshire.

Among the recipients, was Lane End's own Linden Porter, who received a Highly Commended award in the Adult Category for her tireless work in litter-picking, keeping our village playground safe for children and making sure that Lane End is a cleaner and tidier place to live. The award was presented by Congratulatory and thanks to Linden!



Linden with Councillor Dominic Barnes

Acorn

Building & Construction

Extensions | Refurbishments
Ground works | Roofing works
Bathrooms | Kitchens
Fascias & Soffits | Guttering Services
plus most Building and Construction Services.

T: 07888 682 977 - 01494 883322

acornconstructionservices@gmail.com

Horse Shoe Barn | Bullocks Farm Lane | Wheeler End | Buckinghamshire HP14 3NJ

VAT Reg. 205593611

Londis

Lane End



INSTORE POST OFFICE:

offering a wide range of products and services - stationery, packaging products and tapes, helium balloons and party pieces.



PAY POINT TERMINAL: re-charge gas and electric, TV licence, rent and council tax, mobile phone top-ups, photocopying.

GROCERIES: this includes gluten free and vegan options. Our confectionery range is now stocked with a wide selection of American sweets.

DAIRY & CHILLED: increased range of fresh fruits and vegetables, ready made meals and soups, extended range of meat market products.



BAKERY: crusty bread and rolls, baguettes, croissants, pastries, jam doughnuts - baked daily.



FOOD TO GO:

Costa Coffee, Fwip (Italian ice cream), Freal milkshakes (American style)
Hot food - pasties, sausage rolls, bacon baps and paninis.
All freshly prepared instore.

Opening Hours:

Monday - Saturday 7:00am - 8:30pm Sunday 8:00am - 6:00pm

Londis Lane End, Edmonds Shopping Centre, 5-7 Edmonds Road, Lane End,
High Wycombe, Bucks HP14 3EJ

Londis: 01494 882346 Post Office: 01494 883556

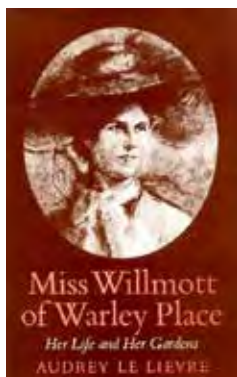
Hambleden Valley Gardening Club

Report by Janet Collins

We have had our two final speakers for our year with a new season to start again as usual in October.

In February we had a very amusing and informative talk presented by Russell Bowes entitled Miss Jekyll's Boots. Contrary to the title it was not all about Gertrude Jekyll but was a potted history of eminent gardeners through the years. One such gardener was Ellen Willmott, a wealthy lady, thanks to cheques from her godmother.

She was a lady of formidable intellect but could also be prickly and scathing. She poured herself into the gardens at Warley Place, employing 104 gardeners working from 6am to 6pm at an unchanging rate of 18 shillings a week. Many plants with the willmottiae and warleyensis names were named after her.



In her last meeting as Chairman of Hambleden Valley Gardening Club, Celia thanked everyone for their support and made particular mention of some members, including her committee. There was a lovely tribute to and appreciation of all that Celia has done in her leadership of the club since she founded it 14 years ago. The future of the Club is assured and there will be more information about this in due course.

We then had a talk from the regional coordinator, Helen Moorcraft of the Plant Heritage, a charity founded to conserve the diversity of plants. In 1978 Christopher Brickell and Graham Stuart Thomas recognised the need to conserve plants and in 1981 the first Plant Collections were established.

There are now about 600 National Plant Collections, over 400 collection holders and 3,600 members in 33 county groups. Plants can disappear because they are difficult to propagate or cultivate, through pests and diseases, loss of gardens, change of fashion and for other reasons. This was a fascinating talk on the importance of preserving our plant heritage and really all maintained by enthusiastic gardeners who have a passion for a particular plant.

We have just one garden visit this year which will be in early July and will be to visit a fairly local garden, The Grange at Chalgrove. The

Grange has been designed and maintained by Vicky Farren, with a little help from husband, Peter - who was led to believe it would be a 'low maintenance' garden. Vicky took the garden on in 2004. With a background in floristry and design, she had a starting point - but has mostly learnt 'on the job', uncovering the many beautiful features of this landscape, year by year.

The transformation at The Grange has been dramatic. Few of the features you see today were visible in 2004 - either shrouded in under-

growth, (see the photos below) or not yet imagined. Over the years, multiple gardens and spaces have developed, including the orchard, a kitchen garden, a 'prairie' behind the lake, and a small labyrinth

Please make a note in your diary of our wonderful Plant Sale which will be held again in the lovely setting of Manor Farm in Fingest by kind invitation of Charles and Sylvia Crowther. The date is Saturday 14 May 10am to 12 noon and there will be an opportunity to enjoy tea and coffee with homemade cakes as well as buy lots of plants at really bargain prices.

Further entries to this magazine will continue but later in the year with the new committee. Watch this space. Happy gardening!



The Grange before...

The Grange after



Paul Smale

ELECTRICAL SERVICES

Making a brighter, warmer future.



Local family business providing a friendly and reliable service. Offers domestic and commercial services

Fully qualified
and insured



All electrical work carried out by Paul Smale Electrical Services Ltd is guaranteed by ELECSA.

Call us on: 01494 482668

Mobile: 07841 359957

Email: info@paul-smale.co.uk

www.paul-smale.co.uk



LOCAL & RELIABLE
ALL ROOFING WORKS

Local, Lane End, Roofer

WESLEY HUNT

HUNT ROOFING & PROPERTY SERVICES LTD

CONTACT

M: 07980 798295

E: OFFICE@HUNTRPS.COM



WWW.HUNTRPS.COM

Lane End Players

Report by Ceri Nicolson

This spring the Lane End Players were delighted to return to the Village Hall stage and to welcome back full audiences again. Director Martin Hailey and Producer Lannie Staff brought us 'Around The World in 80 Days', an adaptation of the Jules Verne' novel by Mark Brown. The initial rehearsal period was a bit rocky due to multiple cast members going down with the dreaded Covid-19 virus, but thanks to a committed team who all worked hard we were thrilled to be able to deliver this successful production.

'Around The World In 80 Days' was a wonderful way to kick off the Players' 50th anniversary programme. The Lane End Players were founded in 1972... and we still have a couple of members that were part of that initial group! We will be having a Golden Gala night in August to celebrate and are also planning on producing LEP T-shirts with a 50th Anniversary logo printed on them. We've chosen a design and at this point (before going to press) we estimate the price will be about £10-£15. If you are interested in buying one of these please go to our website or Facebook page and we'll be in touch.

**We'll be at
Lane End Fete!**

4 June

As always, we will be participating in the Village Fete on 4 June - a very special one this year as it will coincide with the Queen's Jubilee celebrations. Please come and find our stall and have a chat about productions past, present and future. We are always delighted to welcome new members so if you are interested in joining us in any capacity, whether onstage or behind the scenes, we'd like to meet you!

Our next big production will be our summer pantomime, 'Aladdin', written and directed by Catherine Everitt and produced by Pip Richards. This production should have taken place in February and It was a



difficult decision to halt rehearsals when Covid-19 figures were increasing before Christmas, so the Players were delighted when Catherine agreed to produce it in the summer instead.

With amazing good luck, the majority of her cast and crew were available on the dates chosen (see dates for your diary below). Although the season has changed, nothing else will differ from the usual fun and frivolity you have come to expect from an LEP panto... and it will make a wonderful end-of-school treat for children and adults alike!

Our autumn production has yet to be confirmed but it seems very likely

that Paul Brown, one of our most long-term members, will bring us 'A Breath of Spring', a comedy by Peter Coke. This play was actually the group's very first production back in 1972, so make-sure to join us on a hilarious trip down memory lane in October!

Dates for your diary:

Pantomime

Fri 15, Sat 16 & Sun 17 July

Fri 22, Sat 23 & Sun 24 July

Autumn production

Fri 7 & Sat 8 October

Fri 14 & Sat 15 October

Laneendplayers.com









ASPECT CARPENTRY

Reliable and professional service to the local community
Established since 2002

Free estimates and competitive prices
City and Guilds Qualified
Fully insured, all work guaranteed

Internal/External doors
New windows fitted
Bedrooms
Solid wood and laminate floors
Staircase refurbishment
PVC-U doors and composite doors supplied and fitted





Email-
aspectdf@aol.com

Call Duncan Frost
07811 596304-
01494 880540

Find us on Instagram
[@aspectcarpentry_](https://www.instagram.com/aspectcarpentry_)





Lane End Fete

Report by Alison Hartnett

This year the fete is being held on Saturday 4 June between 12pm and 4pm on Ditchfield Common to coincide with the Queen's Jubilee weekend.

The team has been working hard and we have some lovely new stall holders this year and lots to see and do.

The dog show is always popular and will take place at 2pm with prizes and a rosette for each category winner and the two runners up.

Paige's Pawfect Treats will be there with everything your dog could want and more!

There will be games, live music, food and drink, an art exhibition, community groups, stall holders and the Grand Draw with lots of great prizes.

All we need now is some good weather and we are all set to welcome everybody to our village day.

We are always looking for volunteers to help

on the day, from setting up, helping on a stall or anything else. If you would like to be involved please contact Alison via email

at LEVFADS@outlook.com or DM via Facebook at Lane End Village Fete and Dog Show 2022 or on Instagram @lane_end_village_fete

The fete is held to raise funds for the upkeep of Lane End Village Hall which is a registered charity and relies upon its hirers and donations for its upkeep.

If you would like to hire Lane End Village Hall for any event, they have a new Facebook page with contact details or you can call Eve Berry on 01865 400365.

The fete team cannot wait to welcome you all back.



Playing Fields

Report by Stewart George

The arrangements for the **Platinum Jubilee Event** on 3 June on the Playing Fields are well advanced and posters throughout the village give a flavour of the musical celebrations. The only thing we can't control is the weather but here's hoping for a fine day and evening. The day's programme of music will be publicised on Facebook and a full range of drinks will be available at the bar.

Whilst the Jubilee is the music event that will provide a fitting celebration of the Queen's Platinum for Lane

Enders, later in the year we hope to have a couple of music evenings promoting local bands, with the Marquee providing shade and seating.

From the end of May, the Club-house bar at the Playing Fields will be open from 2pm to 7pm on Saturdays and 1pm to 5pm on Sundays. In addition, we plan to have regular monthly bingo and quiz evenings on Saturdays and other events like the race night planned for July. Again, please check the up to date programme of events on Facebook. Don't forget that there is also the opportunity to hire some or all of the Playing Field's facilities for private events, when they are free.

Need a Designer?



Logo Design • Flyers • Brochures
Print Design & more

www.theyetis.com

Based in West Wycombe



Report by
Ben Smiley

It seems like only a few weeks ago when we put the pitch to bed, and packed our kit away into the loft, but when you're reading this I expect we'll have already completed a few games of our 2022 season.

Things are feeling good this year, and we've been able to complete some practice sessions at the ground, meaning that we're feeling a little more prepared than we were last time around. A couple of friendly matches in Easter allowed us to come together, and to give a few new faces the chance to get a feel for the game they're returning to.

Our season is looking like a busy one: 16 league fixtures, 11 Sunday social games, the Pocock and the Frieth Cups and a number of mid-week cup or social matches make for a full schedule. However it also means that there are lots of chances to come up for a game! As always, we try to offer playing opportunities for players of any experience and ability, therefore if you fancy trying something new, or restarting an abandoned cricket career, let us know and we'll get you involved at the level you feel comfortable in.

This message also applies to juniors, and I am delighted to announce that the Frieth Cricket Club Junior Section is up and running for the season. Children between the ages of 6 and 11 are invited to join us from 4.30pm on Fridays, and on Sunday mornings. We'll focus on developing their movement, and cricketing skills, and if there are enough children signed up, we're aiming to organise some fixtures too. Should there be any children older than 11, they too can come along, and we'll make sure that we organise something that allows them to play some cricket too.

You'll be well aware of my regular pleas for volunteers, and as the Club grows, this need for helpers at any level of the Club is greater than ever. If you can offer even just an hour a week, please let us know – any time that you can give to us is of huge value to Frieth Cricket Club, even if you have no experience of cricket, or volunteering. Please give me a call on 07879 855353 to discuss anything to do with volunteering at the Club.

Fundraising is another key factor that helps us to secure the future of Frieth Cricket Club, and there are a few easy ways that you can help. You could enter our 50/50 Club, which awarded over £1000 in prizes last year, you could sign up to support us via www.easyfundraising.org.uk/friethcricketclub or you could attend some of our events during the year. These events include the Frieth Cup, on 7 August, and the Race Night, which is planned for early October. Email us at friethcricket@btinternet.com to find out more about our fundraising, or to discuss any other aspect of our Frieth Cricket.

Whether you're a supporter, a fundraiser, a player or a volunteer, we look forward to welcoming you to Frieth Cricket Club soon, and I thank you in advance for what you can offer our Club.



We are
still open!

that
Slimming
World
feeling!

Tuesday evenings
(Lane End)

Thursday evenings
(Marlow)

contact Marion on 07887 607987
for more information about our fabulous
slimming world at home service



Lane End Litter Magnets

By Linden Porter

First of all, a big thank you to all those who helped with The Great Spring Clean litter pick in April. I estimate we collected about 20 sacks of litter!

Red Kite also carried out a further litter pick three days after our efforts and a further 10 sacks of rubbish were collected!

Current Issues:

The number of residents joining The Lane End Litter Magnets increases monthly and there is now a core team of volunteers litter picking on a regular basis. I believe, from speaking to those I meet, that there is a general feeling that the village is looking cleaner.

You can litter pick at any time. If you want to join in and need equipment then please message me via Facebook.

I am well aware that roads like Park Lane, The Row, Simmons Way, Archers Way and the main roads in and out of our village all suffer from litter slung from passing traffic, however I am still surprised by the amount of litter we

find in the many parking areas around the village, the footpaths, the playground areas and residential streets. If we all do our part, these areas can become cleaner and litter free – pleasanter for everyone.

This is a Bin:



This is a Bin:



This is NOT a Bin:



There are over 30 bins in Lane End! For those who still appear to be confused about what a bin looks like, I hope this helps!

🦋 Playground Update

Report by Linden Porter

There is now a notice on the yellow gate to the children's section reminding everyone that neither dogs nor bicycles are permitted in this fenced off section. I encourage all those who use this area to help me to keep it clean and litter-free.

I have had several meetings with Red Kite regarding the improvement of the playground, and, at the time of writing, I am pleased to report that there is now a schedule of works in place to clean all the apparatus.

**Join the Lane End
Litter Magnets on
the first Saturday
of the month at
10am in the
doctors' surgery
car park**

SUPPORT YOUR LOCAL SIGNWRITER!

TRADITIONAL HAND-PAINTED SIGNS & GOLD LEAF GILDING



COLOURFUL KAT SIGNS



**SHOPS + PUBS + WINDOWS + A-BOARDS + MENUS
VEHICLES + CANAL BOATS + WEDDINGS**

Whether you already have a logo or design or just have a general idea of a sign for your home or business, need a bespoke commission or a gift. Signs of any size painted with care and a creative eye. Get in touch!

• Email: kat@colourfulkatsigns.co.uk • Mobile: 07867517555

Lane End Youth and Community Centre

Report by Emma Savory

Wow, what a brilliant Easter playscheme trip to the farm we had! There were 27 children and seven adults who all climbed onto Country-wide coaches and set off for the Bucks Goat Centre. The staff gave us VIP treatment, with pet handling, grooming goats, handling ferrets and rabbits and giving us detailed tours of each and every animal. If you haven't been to this little farm then we highly recommend it.

Due to Covid we had to cancel the senior Christmas lunch so we held it over the Easter



weekend. We welcomed 40 people to a delicious hot buffet and puddings whilst listening to Dave Dunbar entertain us. Another very enjoyable afternoon. Thank you to everyone who donated raffle prizes.

By the time this edition is circulated many of you would have attended our first 'Fundraising Gala' at Harleyford. Thank you to everyone who supported this event to help raise funds for the Centre.

Don't forget we are the perfect venue to hold a party or family get together. Drop Emma an email at leycc@hotmail.co.uk to arrange a viewing or check availability.

Please add 'Lane End Youth &

Community Centre' on Facebook.

Book your place on the summer playscheme at Lane End Youth and Community Centre

Summer holidays are fast approaching. Are you starting to think about childcare? We will be opening the playscheme on the following dates over the Summer.

Monday 1 — Wednesday 3 August

Monday 8 — Wednesday 10 August

10am - 3pm for £15 per child aged 5-12 years old.

Email leycc@hotmail.co.uk to book a place now.

The Centre currently has a Monday evening slot available for regular hire. We would like to host some form of keep fit, Zumba, Pilates etc or anything else you maybe looking to teach to our community!

We also have some weekday after-noon availability. Drop me an email with some ideas on what you'd like to see at the Centre on leycc@hotmail.co.uk

On at Lane End Youth and Community Centre:

Monday—Coffee 10am –12noon

Tuesday and Sunday—Self Defence with Ultra Krav Maga

Wednesday—Junior Youth Club 6 – 8pm

Thursday—Over 50's Lunch Club 12noon

Saturday—Dog training with Bells and Whistles



Amy, The Travel Counsellor

amy.powell@travelcounsellors.com
www.travelcounsellors.co.uk/amy.powell
01494 980 056

Your local Travel Agent based in Lane End.

Offering a highly personalised service, which is required more now than ever.

Give me a call to start creating memories again.

Specialising in:

- | | | |
|--------------|---------------|---------------|
| - Beach | - Luxury | - City Breaks |
| - Adventure | - Multi Trips | - Groups |
| - Corporate | - Cruise | - Weddings |
| - Honeymoons | - Ski | - Memories |

Check out my brand new instagram page @AmyTravelGuru

 @AmyTravelGuru

 AmyTheTravelCounsellor



travel counsellors 

With us...it's personal

Summer fun in the 1900s

By Andrew MacTavish

In the early 1900s, long before Legoland and Thorpe Park, what exciting attractions were there for a special day out in the area? Sue Griffin has found an answer in a 1970s Bucks magazine. An article by an elderly lady, Mrs Day from Hazlemere, gives us a clue of what was on offer within walking distance of our village before the First World War, She wrote:

‘Our mother, our neighbour and an aunt would pack up the food and the linseed oil, get the children together and we would walk the two miles from Hazlemere to High Wycombe Station (no buses in those days).

‘We would have an exciting train journey to West Wycombe station (sadly no more) and then walk to the

bottom of West Wycombe hill where we would hire a sledge for 6d. We’d order pots of tea from one of the cottages opposite the Hell Fire Caves entrance. Then what fun!

‘Oiling the runners of the sledge with the linseed oil, we would spin down the hill in turns and have a marvellous time. It was no hardship to toil back up the hill each time either. I remember on one occasion my younger sister rolling down the hill from top to bottom. Fortunately it did her no harm.’

This expedition was clearly the high spot of the summer. Mrs Day notes that she had 2d. pocket money each week though 1d usually went to the chapel collection. She would deliberate over what to spend her 1d. on at the local shop.

A day out - long walks, no buses, wild sledge rides. They had Health all right in 1900.... But what about Safety?





When the hedge came down outside the Memorial Porch at the Village Hall, we discovered the weathered foundation stone. It was laid

six inches up on the left side of the porch. We printed the picture in the last issue of *The Clarion*.

But there was a puzzle. Everyone can see there is a foundation stone under the kitchen window, four feet up the wall. It says:



(Laid by Lady Clayton of Harleyford Feb 14th 1920)

This was the same day that Lt Col. Cripps DSO of the Royal Bucks Hussars laid his foundation stone. Why were there two similar foundation stones in different places?

So we examined the stonework six inches up on the *right* side of the

porch. With a close look, you can just make out the 'L' of 'Laid'. The rest of the stone facing has been smashed off. We think the answer is that Lady Clayton laid a right hand stone, and that the builders accidentally smashed the inscription as they built the porch. There must have been some red faces.

They couldn't replace it because they had probably built the memorial porch by that time, so a new stone was cut and placed under the kitchen window. It's a pity we hadn't worked this out when we celebrated the Village Hall Centenary in 2020.

* * * * *

We fly the Union Flag at the Village Hall on nationally specified days and other special occasions. In the current appalling eastern Europe situation, we are flying the Ukrainian flag with the Union Flag. (Although there was not much 'flying' being done on this day in the pic below.)



What's On?

✂️ Include your
events here.

Email details to:
katyjdunn@btinternet.com

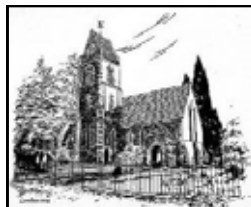
To include your event or group meeting (free) email: katyjdunn@btinternet.com
Please also be sure to inform me of any changes on katyjdunn@btinternet.com

✂️ Church Services

Sundays 10.30am Elim Hope Church

Sundays 9.15am Holy Trinity church, Lane End

Sunday 11am St Mary le Moor church, Cadmore End



✂️ Hambleden Valley gardening club talks

Thurs 7 July—visit to The Grange Chalgrove to see the garden with lunch beforehand in at a local pub.

Contact Celia Warren 01491 638691

✂️ Help tidy the village and look after our green spaces

First Saturday of every month—The Lane End Conservation Group meets in the village (doctor's) car park at 10am. No previous experience necessary, everyone welcome, young and old. Litter-pickers also meet here at the same time and place.

Tai Chi

Tuesday 2pm in Lane End Village Hall, £6 per session. Contact Dr Sue Stuart, sastuart@globalnet.co.uk
01494 532088

Café at the Community Centre

Mondays 10am – 12noon for coffee and homemade cakes by Charmain and Thursday 11am – 2pm for toasties, paninis, homemade cakes and hot drinks.

Junior youth club

Wednesdays 6-8.30pm at the Community Centre.

Children's role play

Tuesdays 9.30-10.30am and 11-12noon. Role play sessions from birth to 10 years old. £6 per child, £4 per sibling, £3 under 1s. More info at rolecity.co.uk / sc@rolecity.co.uk

Self defence classes

Self defence classes are Tuesday evenings and Sunday mornings with Ultra Krav Maga at the Community Centre. Ultra-kravmaga.com

Puppy classes

Saturday mornings 9am-12noon.
Bellsandwhistlesbehaviour.co.uk

Socatots

Football for ages 1-4 in Lane End village hall Thursdays 9.30-10.10 am. Tel 07545 148201

Little Fishes baby group

Baby and toddler group for children aged 0-4 years and their parent/ carer at Elim Church Lane End every Wednesday morning in term time. 9-11am. Free, with coffee and snack provided, songs, bible crafts, toys and stories.

Jubilee Music Event

Friday 3 June 12noon at Lane End Playing Fields. Musical entertainment from Caroline Priestley, Drgonfly, Teaser and The Breeze. WEA wrestling, Go Carts, Bouncy Castles etc. laneendsports@yahoo.com

Lane End Fete

Saturday 4 June on the village green in front of the church.

Open Farm Sunday

Sunday 12 June 10am-4pm Lacey's Family Farm, Bolter End.

Lane End Players

Pantomime Fri-Sun 15-17 July

Autumn production Fri & Sat, 7/8 & 14/15 Oct.

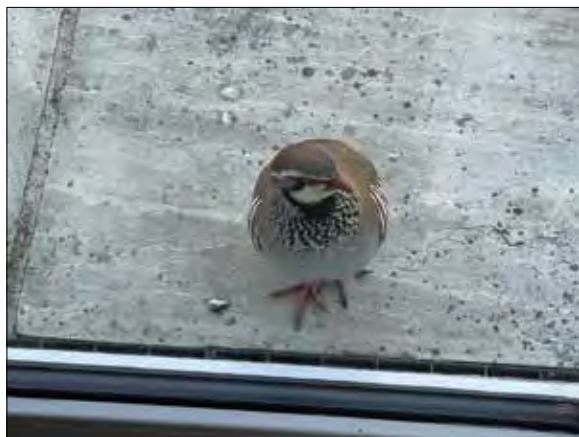
Tel box office 01494 700262

Courtship

Finally, the weather is warming, and green shoots are appearing everywhere. The birds are responding and the volume of song is cranking up each morning as males announce their whereabouts and virility to passing females. Drab and tired winter feathers have been replaced by vibrant new breeding plumage and every bird is looking at its finest.

On a recent walk, I watched two male robins arguing over a female who seemed completely unimpressed by their tail cocking and bobbing up and down in front of her. Every now and then, the 'boys' would jump up and bump their red breasts together, like basketball players who have just made a slam-dunk.

Three buzzards were calling out and wheeling acrobatically over Golden Guff. In both these cases, one of the males will eventually assert dominance over the other, and fly off with the female. Sometimes, we humans inadvertently provide imaginary rivals: we had a red-legged partridge come down from



Golden Guff and attack its image reflected in our patio door glass; it was amusing to watch but the poor bird had to call it a draw!

At the same time, nest building is in full swing with female blackbirds evident in gardens picking up mud, moss and twigs as early as late March for their construction programmes. Older folk like me will remember this not occurring until late April and May historically: a recent Chicago University study showed that many birds are nesting around a month earlier than they did 100 years ago, owing to global warming. The warmth brings out flowers and insects which encourages the birds to breed earlier to take advantage. The worry is that if the weather quickly veers between extremes, both insects and birds can be devastated.

Hopefully, as you read this, new broods of fledgling birds will be feeding in your gardens.



Lane End resident Jerry Gray is author of a darkly humorous satirical novel set in the recruitment industry. He's also a keen birdwatcher.

Finings Wood, now FOR SALE

Report by Katy Dunn

You'll have seen the signs posted on the trees between Lane End and Laceys announcing that Finings Wood is up for sale? The asking price is for offers above £600,000.



It was the worst possible news for the Friends of Finings Wood Group and anyone who enjoys walking through the dappled shade of Fin-

ings Wood. Didn't it look beautiful this spring as the celandines, anemones and then the bluebells came through on the woodland floor? This was followed by the young leaves, so fresh and vibrant lime green on the beech trees.



Of course this isn't all going to disappear as soon as Finings Wood gets a new owner, but our access to it might. There is a public footpath and bridleway running through the wood, but not all the paths we currently enjoy are the public footpath. Furthermore, a new owner would be within their rights to fence off the public footpath so that we'd be snatching glimpses of the bluebells from behind a fence.

The biggest danger, is if Finings Wood is sold to a wood-lotting company. These companies buy woodlands then carve them up into (usually) 5-acre plots and sell them on at an increased profit to different individual owners. Each owner can then fence off their own 'patch' and do what they like within it—introduce sheds or even caravans.

This is no distant possibility as East wood in Stokenchurch has been 'lotted' in this way and it was formerly owned by the same vendor as Finings Wood.

Splitting up woods like this obviously has a huge impact on local woodlands as peaceful green places for communities to ramble, but also could have a severe impact on the natural health of the woodland and its wildlife.

Friends of Finings Wood is a loose group of local people, led by Lane End resident Paul Thomas, who care about the woodland and would like to see its future safeguarded - both as an important natural habitat in its own right, and as a place for the community to enjoy. There's a Facebook Group: Lane End, Finings Wood Group. It already has 260 members, showing the strength of feeling that many people in the village have about the wood.



Friends of Finings Wood Group's main aim is for the wood to remain intact as one parcel of land, rather than sold as lots to multiple owners.

A Steering Group has been set up to try and achieve this as the Group believes this gives the wood the best chance of being properly managed. The Group would be happy if Finings Wood were owned by one responsible and sympathetic owner, or by a community group and are actively pursuing both avenues in order to safeguard the future of Finings Wood.

Actions so far include writing to the vendor with the Group's concerns and objectives, looking into the possibility of a community Crowdfunding project and compiling a list of possible buyers to approach who might have the requisite funds and sympathetic attitude to contribute in full or in part to the wood's purchase.

If you'd like to show your support, please follow the Facebook page **Lane End, Finings Wood Group** and contribute to the Crowdfunding effort if and when it goes live. If you have any suggestions or would like more information in the meantime, please email: finingswoodfriends@gmail.com



Lane End, Finings Wood Group

Facebook group - 253 members

Staircases, Doors & Windows, Conservatories From Raymond Good (Joiners) Limited



Any bespoke joinery work undertaken - Designed, manufactured and installed



Raymond Good (Joiners) Limited is a specialist provider of joinery solutions catering for the new build, trade and domestic markets. Established in 1962 with over 50 years' experience, we offer an extensive range of products,

and can advise on which we feel would best suit the individual's house, style and budget. Plus being a totally independent company, our advice is also completely unbiased!



Raymond Good (Joiners) Limited Myze Farm, Oxford Road, West Wycombe, HIGH WYCOMBE. HP14 3BA

Tel: 01494 881789 **Fax:** 01494 880789 **Email:** sales@raymondgood.co.uk

Call into our showroom - Open 9am to 4pm Monday to Friday.

Contact us today to discuss your wood, aluminium and PVCu product requirements

Since I last wrote, what on earth has been going on! Fuel prices have gone mad, Saharan sand has appeared in the sky and fallen on roofs and cars and Oléron has had to survive two and half days of 120kph winds from Storm Diego. The winds were so strong that the long viaduct to the island was closed for 24 hours.

Furthermore Oléron has rallied to house over 30 Ukrainian refugees and to provide aid for all those from the East in desperate straits. The war in Ukraine has shocked everyone in St Pierre.

Another local issue in St Pierre is that the Commune is preparing a dossier to try to attract an overseas delegation to prepare on the Island prior to the Olympic Games to be hosted by Paris in 2024. Recently the town hosted foreign delegations and competitions of Taekwondo and Badminton. The Mayor and his team are very hopeful that the town will be selected to host an international team; we shall see.

On 1 April, St Pierre saw the re-opening of the 'Maison Eco Paysanne' which will be another attraction in concert with the local museum for holiday makers and visitors. The decision on the planning permission for the offshore windfarm to be built near Oléron rumbles on. The town of Royan, further down the coast, has added its weight to the declination of the planning application.

The Oleronnaise Twinners were sad to hear that Mary Coombs of Cadmore End, a regular visitor to the Island on Twinning visits, died in March. Flowers were sent, in her remembrance, for her funeral at Holy Trinity, Lane End. Finally, as I write the first round of the French Presidential Election has occurred. When you read this you will know; is it to be Macron or Le Pen?



RADFORD *RESTORATIONS*



Here at Radford we pride ourselves with the highest quality of workmanship, finishing vehicles to their original form.

Our services include:

- Full & part Restorations
 - Race preparation
- Maintenance & Servicing
 - Vehicle Delivery
- Engine Building & Rebuilding

For all enquiries, please contact Don or Dean

01628 613798 Or 07802213145

dean@radford-restorations.co.uk

www.radfordracing.co.uk

A world record from Lane End?

Report by Andrew MacTavish

The world record speed for two-litre petrol cars is 211.463 mph. If it is broken soon, Lane End might have played a role in that record.

Lane End resident John Mellelieu has been aiming for the record since 2016. He's been hand-making his own car in the garage of his Lane End house. Though he is not an engineer, he has always had a hobby in engineering. He started designing the car after studying the regulations at Bonneville, Utah, the home of record breaking.

First, he produced the framework in welded steel tubing. Next, he added a Honda S2000 engine with upgraded pistons and a new cylinder head. Then a Ford Capri rear axle, the controls, the braking system, the fire extinguishers, the braking parachute - everything in accordance with the regulations. John has welded, bolted

and threaded everything to fit into a thin, glass-fibre outer shell. A few components were bought; many he machined himself. Advanced maths, advanced engineering, all in his Lane End garage.

John hasn't shouted about it. He didn't want crowds marvelling. His neighbours were stunned enough: 'You're going to do 212 mph in that?!!'

Sadly, Covid and the pressure of missing his relations for so long have driven John and his wife Tracey back to his native New Zealand after 27 years.

The car is now in New Zealand instead of Lane End and it will travel for its attempt on the record at Bonneville next year. We shall miss John but wish him the best of luck in his record attempt.



Award Winning

LACEYS



FARM SHOP & BUTCHERS



**Specialising in
Home Produced & Locally
Sourced Produce**

**Full range of meats, all from our
own and other local farms**

Butchery • Milk • Eggs • Deli

**• Fresh Fruit & Vegetables
Fresh From Market Every Day**

• Fresh Bread Every Morning

Opening Times

Tues - Fri 8.30am - 5 pm

Sat 8.30am - 4pm

Sun 9am - 2pm

**Laceys Farm Shop & Butchers
Lane End, High Wycombe, Bucks HP14 3LP**

Telephone : 01494 881660



Milk Men

with Will Lacey 



Open Farm Sunday 12 June

On Sunday 12 June we will be opening our farm up again for Open Farm Sunday. This is a national initiative to get farmers to welcome the public onto their farms, so you can see what happens behind the farm gates

and help teach children where their food comes from.

We last hosted the event in 2019, and lots has happened since then! It's always a really popular day,



with live milking demonstrations, tractor and trailer rides, your chance to sit in a big or small tractor as well as meeting all the animals. There will be a live bee hive, as well as BBQ, ice creams a bar and lots of special offers in the farm shop.

But before the open day we have lots of work to do. All the cows are now out to graze the fields. The sheds where we housed them all need mucking out. Our most important grass harvest of the year, to feed the cows all next winter needs to be gathered in, and then on to all the cleaning and planning for the Open day.

Last time we hosted OFS we had in excess of 1700 people visit the farm. This would not be possible without our hard working team, to whom we are very grateful.

This year we are taking bookings for the open farm. You can book online at <https://www.trybooking.com/uk/events/landing?eid=27665&> or go on our facebook page and follow the link. The entrance fee is £3 for anyone over 12. Under 12s are free. I look forward to welcoming as many of you as possible to our farm.

Sunday 12 June 10am-4pm

Laceys Family Farm





Martha's baking column

By Martha Foster-Will

Brilliant banana cake

Hi, this time I thought that I would share an old family favourite with you. My mum usually makes this when all the bananas in the house have gone very brown! It is a very delicious recipe, and a tasty touch would be to add some walnuts. It is up to you how many walnuts you add, if you add any, but if I were you I would add about a handful of them.

Ingredients:

140g butter, softened

140g granulated sugar

140g self raising flour

1tsp baking powder

2 medium free range eggs

3 very ripe bananas

Method:

1. Preheat the oven to 180°C / 160°C fan oven / gas mark 4
2. Cream together the butter and sugar until well mixed. Try and get as much air in to the mixture as possible.
3. Whisk the eggs and add them, together with the sifted flour and baking powder, to the mixture.
4. Mash the bananas and add them to the mixture and stir well together. (If you want to add walnuts, do this now, using halved walnuts.)
5. Pour the mixture into a baking tin, lined with greaseproof paper, and bake for 50 minutes.
6. Remove from the tin and cool on a wire rack.



Are you suffering from a chronic health condition?

Homeopathy offers an alternative way of addressing health issues. By understanding the mind-body connection and looking at underlying causes it can help many conditions including:

- Digestive issues
- Joint problems
- Skin conditions
- Hormonal issues
- Allergies
- Chronic fatigue
- Headaches
- Stress
- Anxiety
- Insomnia

For a no obligation chat to see if homeopathy could help you, contact Lilli May on 07950 005233 or at lilli.may@zen.co.uk

30% OFF FIRST APPOINTMENT, QUOTE 'CLARION'



Registered Member of
The Society of Homeopaths

Scouts



By Ian Harris

Scouting was forced to close its doors for face-to-face meetings during the pandemic and whilst there was an online presence it couldn't replicate the true feeling of scout activities.

We weren't idle as a Group though, and took the closure as an opportunity to refurbish our Victorian School HQ. We replaced our toilets with a new modern layout, had a new kitchen installed, rebuilt the front wall, and refurbished the old school railings. We removed four external chimneys, refurbished antique parquet floors in the main hall, corridor, and classrooms, put in new entrance doors, replaced a flat roof and decorated from top to bottom in every corner of the building. We installed new and interactive audio-visual equipment and took the time to evaluate our camping equipment.

In total we invested over £80,000 and nearly three months of project management to bring our building to a standard that will last for many years to come.

And now we are back, we have a healthy supply of young people, a robust waiting list, and several summer camps already in the diary. As

many of our Cub Scouts missed out on camps during the pandemic, we are taking them back to basics with a whole term of traditional Scouting skills that will culminate with a woodland weekend putting them all into practise.

We will have a presence at the Village Fete, both as a Scout Group and supporting our partner organisation the Royal British Legion, so please do pop by to say hello.

I am pleased that recently many of our volunteer leaders have been recipients of Scout Association Awards, with a good number of 10-year service awards being made, it is testament to their dedication to this fabulous organisation. I also received one of the Scout associations highest awards this year, 'The Silver Acorn', which is awarded after at least 20 years' service, which should be specially distinguished and appreciably better than outstanding. I'm proud to be one of only 500 people awarded this since its conception in 1998.

The future of our Group is bright, it's a good time to be a Scout of any age and It's almost like we have never



Plumbing ▶ Heating ▶ Bathroom

Gas Boiler – Service/Repair

Plumbing – Taps/Leaks

Heating – Radiators/Controls

Bathroom – Taps/showers

Local Friendly Service Call Paul

M:07883 341496 T:01628 488818

www.APSandSons.com



Exhibition of local paintings in Holy Trinity church 4 June

Report by Katy Dunn

On Saturday 4 June, the day of Lane End village fete, do make sure you make time to call in at Holy Trinity church.

In there you'll see some faces and places you're bound to recognise. Julie Wetenhall's portraits of local residents will fill the pews and Jan Gaska's 'plein air' landscapes of Lane End and the surrounding area will be on the walls.

You may have seen Jan out and about in the village with his easel over the past few months, or come

across Julie taking pictures or painting whilst out with her dogs.

It's set to be a wonderful celebration of our village and an amazing opportunity to buy an artwork that really means something to you. Maybe you, your friend, your house or your favourite view will feature!

Last month we featured Julie's portraits and here are some of Jan's landscapes that you'll be able to see 'in the flesh' at the exhibition.





All paintings by Jan Gaska.

Left below, Lane End High Street

Top, duck pond and high street

Right, Laceys cow and barns

Below, Houses on The Row



✂️ Proposed film studio at Booker air park

Report by Katy Dunn

There's a major new development planned for Wycombe Air Park at Booker. Longer term residents will remember the successful campaign launched by the village against the development of a new stadium at the air park. But the objection there was not to the stadium itself, but to the additional 600 houses that were being planned on the site to fund the stadium.

This would have put pressure on local infrastructure and paved the way to Lane End being built around and drawn into Wycombe suburbs, rather than being a rural village.

In 2019, a sizeable chunk of the air park was allocated as a strategic employment area in the Local Plan for Wycombe District (with the adjacent air park in situ). This means that there was always going to be some form of major development at the air park. Better a film studio than the alternatives that could be built there? What do you think?

Detractors include Booker Gliding Club which says the development has 'forced them off the airfield.'

The plans include brand new eight-stage film studios, the first phase opening this year for a major feature





film that will start shooting this year. You can already see a huge new hangar-style building on the horizon as you drive down the High Street.

These first buildings are temporary—just for this current feature film—and an application for a permanent studio will follow later this year.

Wycombe Air Park will be the third site for the film studio developer, Stage Fifty. Its other sites are in Winnersh and Farnborough. The chief exec of Stage Fifty says: ‘Stage Fifty creates sustainable studios and with our partners, we’ve developed new technologies and innovative ways to build greener and more quickly than our competitors.

‘Wycombe Film Studios will create around 750 full-time direct jobs and support 450 indirect jobs in the supply chain and establish High Wycombe

as a destination for national and international film and high-end television projects. [It will] attract the world’s most innovative content creators and inspire a new generation of British filmmakers in the heart of Buckinghamshire.’

It’s certainly true that there’s a global boom in high-quality content for films and TV streaming. The UK leads the way in production, with a recent report by the British Film Institute revealing a record £5.64 billion in film and high-end TV production spend in the UK in 2021.

Stage Fifty says it will give back to the community and support local talent with the launch of an apprenticeship scheme to provide hands-on experience and training opportunities to 25 apprentices each year.

On the land

with Bryan Edgley 



Good spring for fieldwork

The first three months of 2022 have been drier than usual, with an average rainfall of 57 millimetres (2.2 inches) whereas the average rainfall for the first three months of the two previous years has been 89.7 mm (3.5 inches).

These drier than usual conditions have been good for arable work, since field work is best carried out when the soil is sufficiently dry to walk over it in shoes, rather than in gumboots. Soils saturated with rainfall do not make a good seedbed, and in those conditions if the soil is over-compacted by tractors and the cultivators or harrows necessary to make a seedbed, then germination and growth will be disappointing.

The final stage of establishing any cereal crop is to roll the seedbed after drilling, or if conditions are too sticky for that, then to roll the young crop after it is established. This happened with many of our fields for the crop now growing.

In autumn 2021 our fields were too damp to roll without causing compac-

tion, so they had to be rolled this Spring. The photo is of my grandson Angus rolling the crop of Winter wheat on Dells Main on 24 March, using our new McConnell Cambridge Rolls. The five sections, covering a working width of 15.3 metres, fold up hydraulically, and the two heavy duty wheels with rubber tyres lift the rolls, for travelling along roads between jobs.

In our cropping this year we are growing 1,730 acres of Winter Wheat and 81 acres of Winter Barley, planted in the period 25 September to 26 October 2021, and 116 acres of Spring Wheat. We hope that the wheat will have high protein and good gluten content and pass the necessary tests to be accepted as best quality milling wheat, suitable for milling into flour from which loaves of bread are baked.

Russian invasion of Ukraine

Following the invasion of Ukraine on 24 February by Russia, there has been a serious disruption of the worldwide grain trade. The Ukraine used to produce around 10% of the

world's global wheat production, and Russia produced around 20% of it, much of it being exported to the Middle East and North Africa. Port facilities in Ukraine have suspended commercial operations, preventing the export of wheat from the 2021 harvest. Furthermore, there is a question mark over how much planting for 2022 harvest has been carried out.

A serious disruption of global wheat trade is bound to follow, and this is likely to lead to higher food prices for the consumer. The World Bank has warned that the war in Ukraine is set to cause the 'largest commodity shock' since the 1970s and the world could 'easily fall into a food crisis'.

Energy prices are set to increase more than 50% - it is this factor that has already disrupted supply of fertiliser in a way that a few months ago

none of us would have thought possible. Nitrogen in the soil is essential for satisfactory growth of wheat during the spring and early summer, and the wheat plant needs good levels of nitrogen to make the protein which is so important for wheat that is to be milled to make flour suitable for making bread.

We use a nitrogen fertiliser called Urea, a natural product, also called **carbamide**. Urea was first isolated from urine in 1773 by a French chemist, Hilaire-Marin Rouelle. It is prepared commercially in vast amounts from liquid ammonia and liquid carbon dioxide by combining these two substances under high pressures and elevated temperatures. It is the cost of the gas used in this process that has caused the price of Urea to rise from £260 per



tonne two years ago, up to the present price of £900 per tonne.

Many of us farmers have been criticising the recent policies put out by the Department for Food and Rural Affairs (Defra), which have concentrated too much on measures to protect the environment, leaving very few of the clauses of the Agriculture Act 2020 devoted to the production of food. We hope that the new priorities of Government, in a newly changed world order, will once again recognise that growing food in Britain, rather than relying on imports, is just as important now as it had been during two World Wars.

Turning to the humanitarian disaster

that this invasion has caused, we were pleased to make one of our farm buildings available to Warren Detsinyi as a temporary storage depot for clothes and other household and family necessities donated by local folk for refugees and those made homeless in Ukraine.

Warren has instigated and arranged this magnificent work, starting with an introduction through LinkedIn to a group of the wives, whose menfolk are fighting in the Ukrainian resistance, running relief measures under the name of 'Winter Water'. Warren has followed up this introduction by driving firstly his own van out to Lviv, about 70 kilometres from



the Polish border of Western Ukraine, loaded up with these provisions and medical stores. After his own van had to be scrapped due to a broken timing chain, he then drove a second journey in a larger seven-tonne panel van, out to Lviv, to personally deliver these necessities to the families that need them. The photo shows Warren loading his own van for the first journey.

Fly Tipping.

We continue to be troubled by fly-tipping, generally in field gateways on isolated roads. The photo shows Paul Rogers and Angus clearing the rubbish from the third instance of fly-tipped rubbish this year in the gateway to our Hill Farm field off Fingest Lane.

One of the first duties of Alex as chairman of the NFU Berks, Bucks and Oxfordshire branch was to launch the Thames Valley Police new Taskforce to Tackle Rural Crime at the Kidlington HQ of TVP, shown in the photo.



The Edgley family has farmed at
Kensham Farm, Cadmore End
since 1955

kenshamfarms.com



Schools



We have had a fantastic past few months. Lane End Primary School has been buzzing with talk of the many exciting and interesting trips and in-school visitors that the children have enjoyed and I am pleased to report that this is reflected in the amazing progress that the children are making.

Before Easter, we invited local artist, Julie Wetenhall, in to work with the children on a whole school project. The children used clay to produce beautiful tiles which will be put together to make a display with our



logo at the centre. A very big thank you to the Arts Society committee whose kind donation has made this project possible.

In March, Opal, Sapphire and Amethyst classes visited Hangar Farm in Fingest to learn about farming. They saw a number of new lambs and the children were lucky enough to see one actually being born. Not only that, Amethyst Class were filmed by BBC Newsround and appeared on the programme!

Opal class have been learning about the Great Fire of London in history and were delighted by a visit from the father of one of the class who is a firefighter. The children compared how fires are extinguished today with how they were put out in 1666. The class also took a trip to visit the Tower of London. The children loved seeing the Beefeaters and the Crown Jewels and also learnt more about the Great Fire from Mistress Marshall who was dressed in 1666 costume.

Sapphire class have also taken a trip to London to see the fabulous immersive Vincent Van Gogh exhibition in Spitalfields. One of the highlights was seeing *Starry Night*, which is the piece of Van

Gogh's artwork that Sapphire have been studying this term.

After weeks of practising songs from Matilda The Musical, the school choir took part in a concert at the Royal Albert Hall. We joined 1800 other children from Buckinghamshire schools and performed to a packed audience. The choir demonstrated our school values of courage and endeavour and taking part in the concert was truly a wonderful and exhilarating experience.

Coral, our nursery class, have been learning about 'growing'. The role play garden centre and florist has been very popular, with children busy selling and buying seeds, plants and flowers and practising their early

maths and communication skills. Inspired by Eric Carle's book, 'The Tiny Seed', we have looked at where seeds come from - investigating different fruits, vegetables and flowers. The children have made beautiful sunflowers and daffodils; working hard mixing colours and developing their cutting skills.

It has been wonderful to welcome new families to our school community this term, and we are proud of how well the children have settled into nursery life. There are a limited number of 3 and 4 year old spaces available for September 2022. If you would like to come to have a look around our lovely school please call 01494 881169 to arrange a visit.



Edward Briscoe MIPW



LASTING POWERS OF ATTORNEY

£250* per person

Covers Health & Finance 2 home visits, advice and certification

* OPG charges of £82 per application are extra

WILLS IN ENGLISH

In essence you don't have a Will if you die without one

Wills from £100 if you don't have one
Compliant with the IPW code of practice

Phone: 07962 157843 / 01491 638075

Email: edward@willsinenglish.com

little explorers nursery

Choosing the right nursery for your child is essential. At Little Explorers Nursery we treat each child as an individual, nurturing their talent, skills and confidence so that they can flourish. We have a bright and spacious setting. Inside, there's sand and water, messy play, painting and crafts, cooking, role play and music. There are quiet areas too for reading, computers and maths. Outside, the Nursery has two play areas: one for riding bikes and scooters and another where we enjoy playing, climbing and digging, growing fruit and vegetables and exploring the log pile for mini beasts!

The Nursery is led by a qualified teacher supported by experienced and qualified staff. Full or part-time places for rising 3 and 4 year olds. Call us to arrange a visit on 01494 881169 or email us at office@laneendprimary.co.uk

"Children make a good start in the Early Years Foundation Stage because of the good provision." OFSTED March 2012

Little Explorers Nursery at
Lane End Primary School
Edmonds Road, Lane End
Bucks HP14 3EJ



Ask the: plumber

with Bill Blake 



Bill—I'm hearing a banging noise at night. Could it be anything to do with the water?

Interesting question, but first we need to ask more questions. The first one is always 'what's changed'? In this case, a new washing machine and (spoiler alert) I did fit it.

The customer was in the habit of putting the washing machine on before going to bed, but why the noise?

Well, the new washing machine was faster and more efficient than the old

one, meaning the solenoid that lets the water into the machine was also faster closing and more efficient.

When the solenoid closed on the mains water (at about 50 – 60 psi) the shockwave of the stopped water rattled and banged through the water pipes causing 'water hammer'.

What to do? Fit a 'shock arrester'.

The cheapest version sits between the washing machine and the water inlet pipe, costing around £20 - £25.

If that doesn't work, call me.

Bill Blake, Plumber

Your friendly, trustworthy and house-trained' local plumber

Happy to take on all your household plumbing tasks, from mending a dripping-tap to installing your new bathroom.

No callout charge, No VAT



Phone: 07762 807767

Based in Wheeler End

City & Guilds Qualified

Planting tulips

with Anya the garden fairy

Follow me on Instagram @anya_thegarden_fairy



Some time ago I started seeing garden cultivation beyond the boundary of our own garden and our own needs. I started thinking about the future and what I will leave behind for the next generations. I want to do something meaningful for our environment.

I hope that when we are gone, the purple emperors will be still flying around at the bottom of our garden and our children and their children will be lucky enough to enjoy the beauty of this world.

We should all do our bit and positively contribute to our environment. It's our duty. **There** are so many paths leading to sustainable gardening and I hope I can give you few ideas.

When we arrived here in our current house, our garden was a blank canvas. Over the years I have propagated hundreds of plants, trees, conifers and of course our lavender hedge. I did it in harmony with nature and that probably is the most satisfying thing about it all. It's something I feel very proud of.





Our garden is filled with wildlife and the highlight of recent years has been Striped Lychnis, one of the rarest moths in the UK feeding on my Dark Mullein (*Verbascum nigrum*) grown from seeds.

You'll often see weeds growing between my plants, but that's exactly what harmony with nature means. I often let things be and Nature to take over. I let things be for the sake of wildlife and our environment to preserve the past and protect the future.

Gardening in harmony with nature isn't difficult or complicated and there are few of my suggestions how everyone can positively contribute

PEAT FREE COMPOST

Switching to peat free compost is incredibly important.

Peat is mined from bogs in England and Ireland, but there's not much of it left. It's a finite resource.

Peat bogs are great carbon sinks, storing carbon away forever. In the UK they store more carbon than all Europe's forests.

When we mine peat for gardening we unlock those reserves of stored carbon. We all need to STOP buying compost containing PEAT.

GREEN MANURE

Green manures are fast-growing plants sown and then dug into the ground to add valuable nutrients and to improve soil structure.

WHY SOW GREEN MANURE?

The primary goal is to add organic matter to the soil, but there are also other benefits.

OTHER BENEFITS

It is one of the best 'nitrogen fixers' (it takes it from the air and adds nitrogen into the soil.)

By increasing beneficial microbes it provides nutrients to the next crop.

Improves soil structure.

Reduces the risk of soil erosion, as the flow of water into water bodies and watercourses is slowed.

Fast growing weed suppressant.

Attracts beneficial insects.

The number of earthworms can increase in the soil, which helps prepare seedbeds and reduce disease organisms

We can generally make a difference by using what we've got instead of buying new plants and products. We can use pre-owned pots, propagate or make our own compost, which will not only give us a great sense of achievement, but it'll also save us a lot of money.

For more inspiration please follow me on Instagram

@anya_thegarden_fairy where I share lots of practical advice and show you how to create a stunning and productive garden in harmony with nature.



The Clarion is the Parish of Lane End's non profit-making magazine, for the sharing of information about Parish activities. Neither the editor nor the Parish Council, whilst sponsoring the magazine, takes responsibility for the statements and/or views expressed herein.

Any copy submitted to The Clarion may be edited for space, content or style. By sending information or articles to the editor for inclusion, you are accepting these terms.

We welcome any news or diary dates from community organisations and letters from individuals. The next copy deadline is 1 August and the next issue will be delivered in September.

Send copy to katyjdunn@btinternet.com

The Window Doctor

CARE & REPAIR FOR ALL YOUR UPVC & ALUMINIUM WINDOW & DOOR PROBLEMS

- Replacement of broken down sealed units
- misting up inside glass
- Adjust front & back doors that do not shut
- New handles, hinges and door locks
- Replacement of patio door wheels
- New security handles with keys
- New door panels and cat flaps
- New Georgian style or leaded style sealed units
- All insurance work • Burglary damage • Servicing



PLUS INSTALLATIONS OF NEW UPVC WINDOWS & DOORS



Call us for a **FREE** Survey and Quotation.

No call out charge



Friendly Family Established Business

Cowling & Co.

Tel: 01865 891776

Mob: 07860 435742

www.windowdoctor.co.uk

email: cowlingandcothewindowdoctor@gmail.com

Useful Telephone Numbers...

Parish Clerk—Hayley Glasgow	01494 437111
Lane End Surgery	01494 881209
Lane End Pharmacy	01494 880774
NHS Direct	111 / 0845 46 47
Lane End Holy Trinity Church	01494 881000
Lane End Primary School	01494 881169
Lane End Village Hall	01865 400365
Frieth Village Hall	01494 880737
Lane End Youth & Community Centre	883878
Elim Hope Church	01494 882587
Cadmore End Village Hall	01494 881735
Cadmore End C of E Church	01494 882644
Cadmore End Primary School	01494 881460
Bucks County Council	01296 395000
Highways On Call	0845 2302 882
Flytipping	0845 330 156
Police—non emergency	101
Wycombe General Hospital	01494 526161

E & R MEAKES LTD

- STEEL STOCKISTS •
- WELDERS • FABRICATORS • CRANE HIRE •
- MOBILE WELDING AND CUTTING SERVICE •
- BLACKSMITHS AND AGRICULTURAL ENGINEERS •

Forge Works, Lane End, Bucks. HP14 3HJ

Telephone 01494 881262

Fax 01494 883279

e-mail info@ermeakes.com

- Ornamental Ironwork • Hardware shop • Tools •

ALL OUR STRUCTURAL STEEL IS CE MARKED TO INDUSTRY STANDARD



Osteopathy

Wayne Twitchen
BSc (Hons)



& Ultrasound Therapy

Horsleys Green Clinic



For help & relief with:
Lower Back Pain
Neck & Shoulder Pain
Nerve Entrapments
Stiff, Painful Joints
Muscular Aches & Tensions
Sports Injuries



01494 482615  www.wtosteo.co.uk  07807 846 215



**We are a small village practice in the heart of Lane End.
Our team are passionate about providing you and your
pet with exceptional, forward-thinking pet healthcare in
a relaxed and welcoming environment.**

**Check out our website for further information or
call our Surgery to book an appointment.**

01494 883443

www.cherrytreevets.com